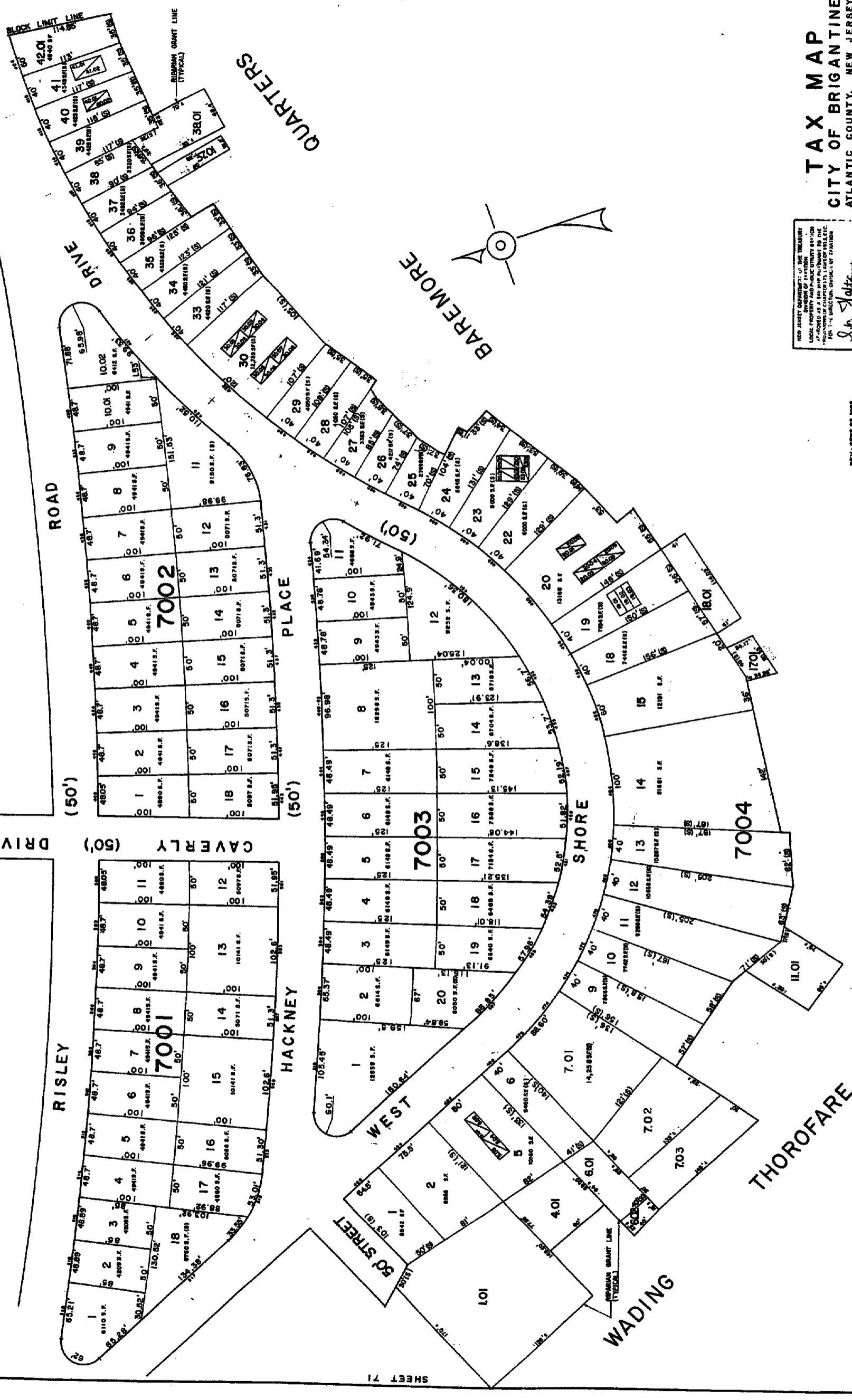


70
416

SHEET 69

SHEET 71

SHEET 67



NEW JERSEY DEPARTMENT OF THE TREASURY
 DIVISION OF TAXATION
 LOCAL PROPERTY TAX MAP PREPARATION SECTION
 PREPARED AS A BASIS FOR PAYMENT TO THE
 PROPRIETOR OF CHARTERS, LIST OF VOTERS
 FOR THE MUNICIPAL DISTRICT OF TAXATION

W.C. KISSANE
 BY
 W.C. KISSANE, CHIEF, MUNICIPAL DISTRICT SECTION
 JAN 21 1995
 N.J.S. 17:27, G.S.B.

REV. SEPT. 23, 1993
 REV. JULY 4, 1991
 REV. APR. 15, 1989
 REV. JAN. 16, 1990

TAX MAP
 CITY OF BRIGANTINE
 ATLANTIC COUNTY, NEW JERSEY
 SCALE 1" = 50'
WILLIAM C. KISSANE N.J.S. 17:27
 115 SO. CHESTNUT ST., PLEASANTVILLE, N.J.
 WILLIAM C. KISSANE, CITY ENGINEER N.J.S. 17:27

KEY SHEET 4