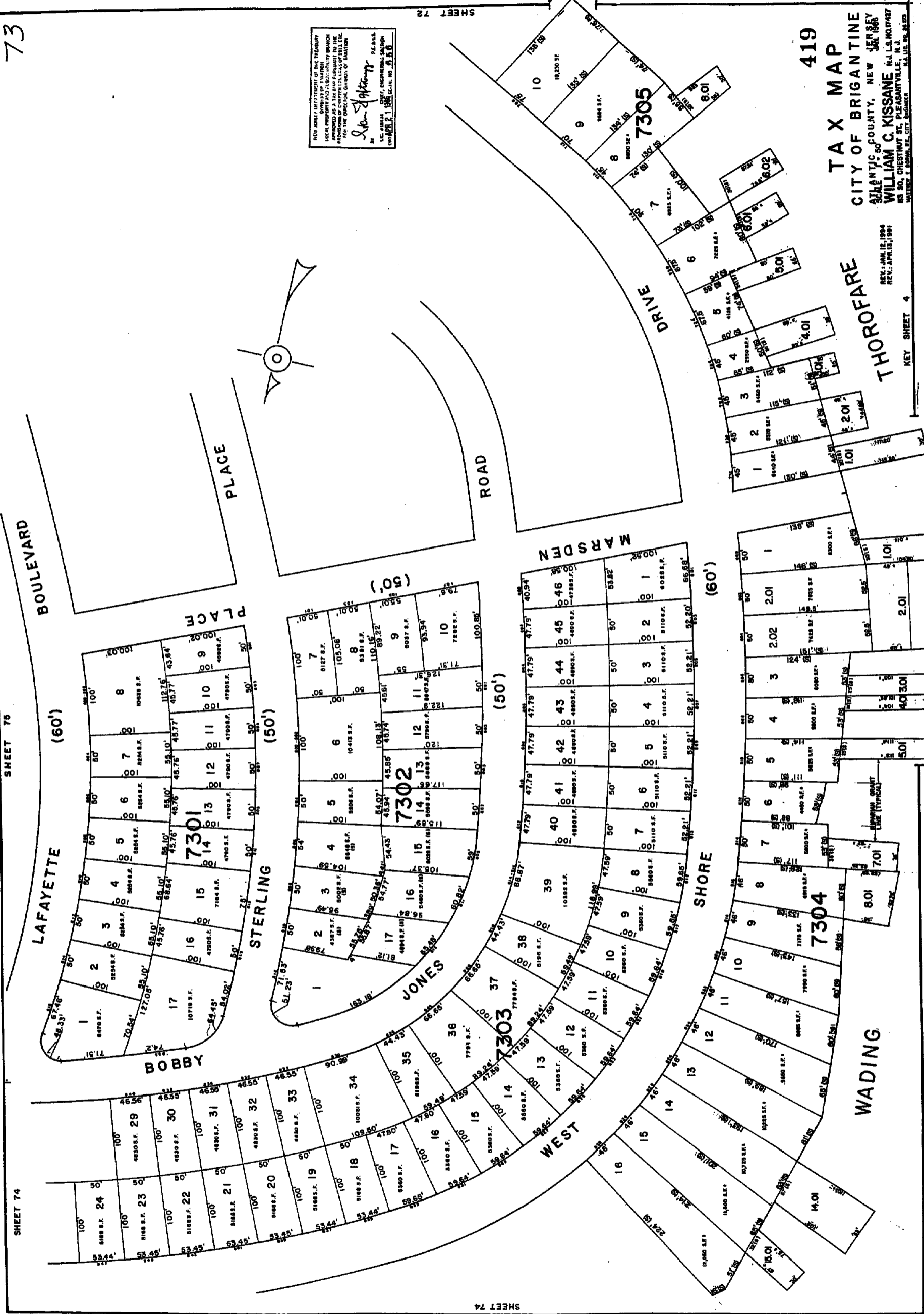


NEW BRICK SETTLEMENT OF THE THOROFARE
 LOCAL PROPERTY TAX DISTRICT, THOROFARE BRANCH
 OF THE CITY OF BRANTINE, NEW JERSEY
 FOR THE FISCAL YEAR ENDING JANUARY 1, 1986
 BY *John J. Hagan* P.E. A.S.C.E.
 L.S. 45343, CIVIL ENGINEERING, 100
 WILSON ST., BRANTINE, N.J. 07003



419
TAX MAP
 CITY OF BRANTINE
 ATLANTIC COUNTY, NEW JERSEY
WILLIAM C. KISSANE A.L.S. NO. 17427
 185 SO. CHESTNUT ST., PLEASANTVILLE, N.J.
 WILLIAM C. KISSANE, CITY ENGINEER

THOROFARE
 REV. JAN. 15, 1984
 REV. APR. 15, 1981
 KEY SHEET 4