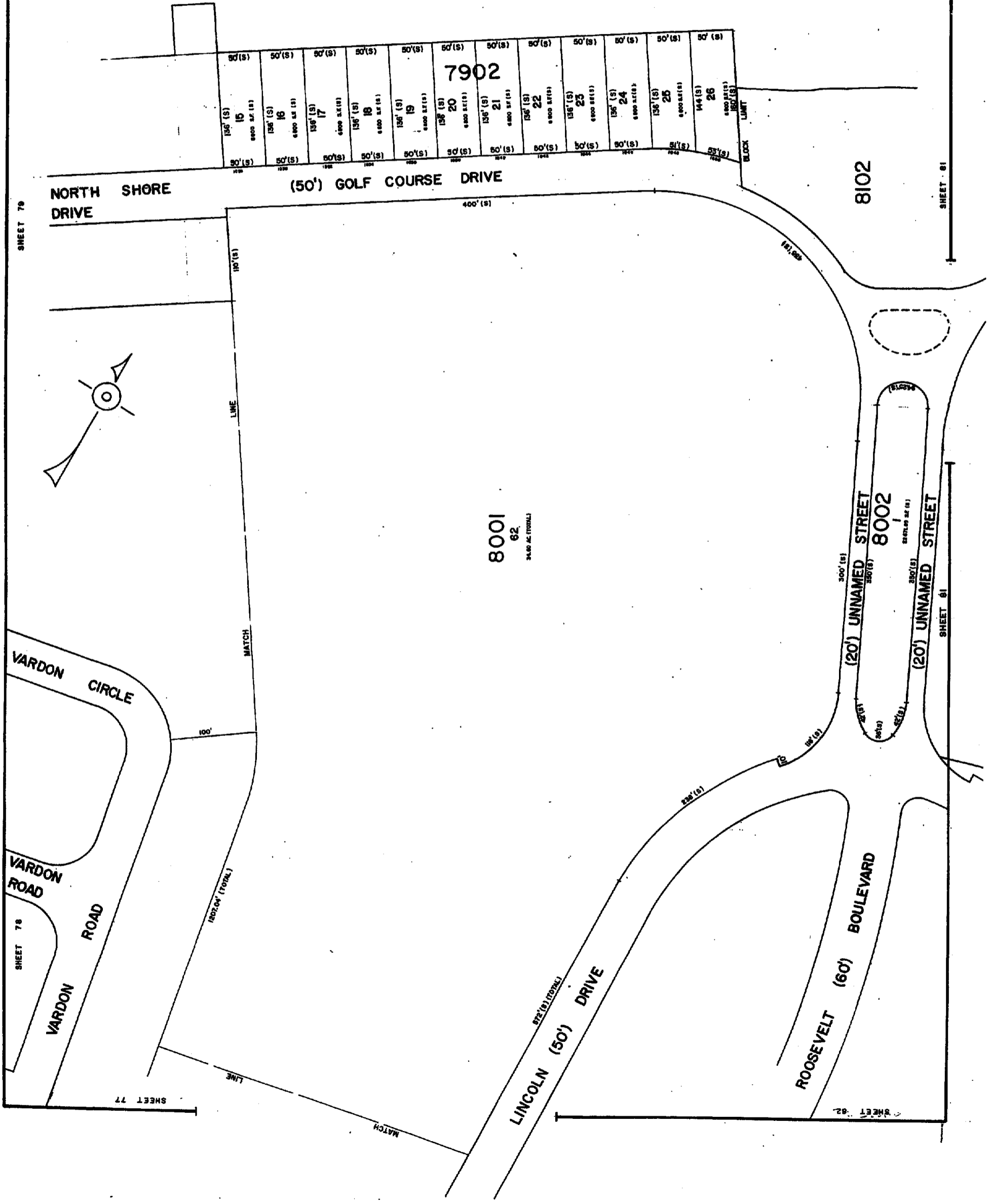


80  
426

# OBES THOROFARE

NEW JERSEY DEPARTMENT OF TREASURY  
 DIVISION OF TAXATION  
 LOCAL PROPERTY AND PUBLIC UTILITY TAXES  
 PROVISIONS OF CHAPTER 121, LAWS OF 1986  
 FOR THE ANNUAL DIVISION OF TAXATION  
*William C. Kissane*  
 WILLIAM C. KISSANE, P.E.  
 DATE: APR. 2, 1988  
 SCALE: 1" = 100'

**TAX MAP**  
 CITY OF BRIGANTINE  
 ATLANTIC COUNTY, NEW JERSEY  
 SCALE: 1" = 50'  
 WILLIAM C. KISSANE, P.E. L.S. NO. 17467  
 85 80, CHESTNUT ST., PLEASANTVILLE, N.J.  
 MATTHEW J. SCHUBERT, ENR. NO. 35748  
 DATE: JULY 28, 1987



SHEET 76

SHEET 76

SHEET 77

SHEET 82

SHEET 81

SHEET 81