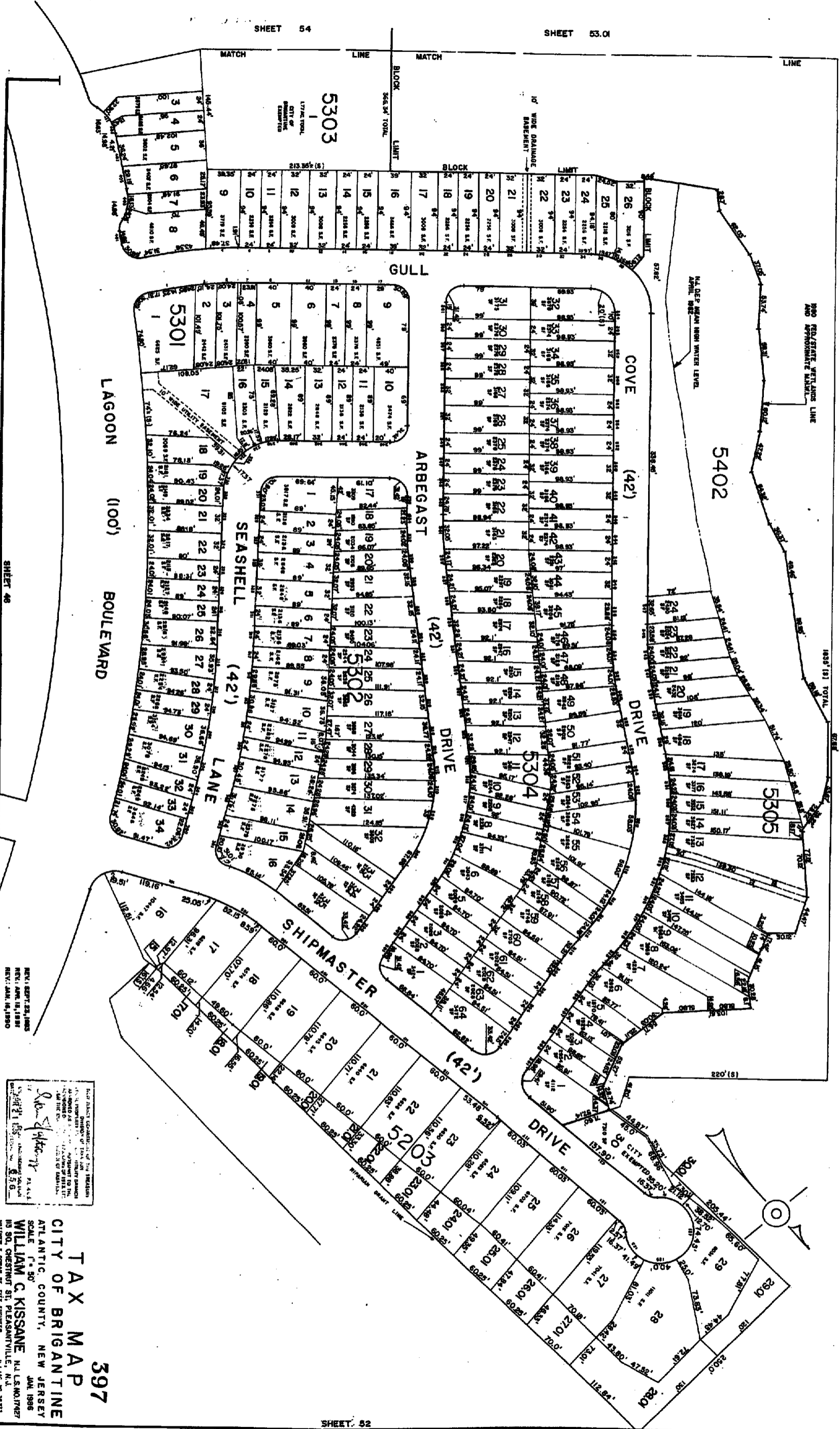


ST. GEORGE'S THOROFARE

KEY SHEET 1

KEY SHEET 1

5-3



REV. 12/27/83, JAMES
REV. 04/18/88
REV. 04/16/90

FOR THE BOARD OF TAXATION
OF THE CITY OF BRIGANTINE
BY: *William C. KISSANE*
WILLIAM C. KISSANE, TAX MAP
PREPARED BY: WILLIAM C. KISSANE
1150 CHESTNUT ST. PLEASANTVILLE, N.J.
P.O. BOX 100, PLEASANTVILLE, N.J. 08078
TEL: 609-221-1500

TAX MAP
CITY OF BRIGANTINE
ATLANTIC COUNTY, NEW JERSEY
SCALE 1" = 50'
WILLIAM C. KISSANE TAX MAP
1150 CHESTNUT ST. PLEASANTVILLE, N.J.
P.O. BOX 100, PLEASANTVILLE, N.J. 08078
TEL: 609-221-1500