

THOROFARE

ST. GEORGE'S

ST.

5402

1,825' (9) TOTAL

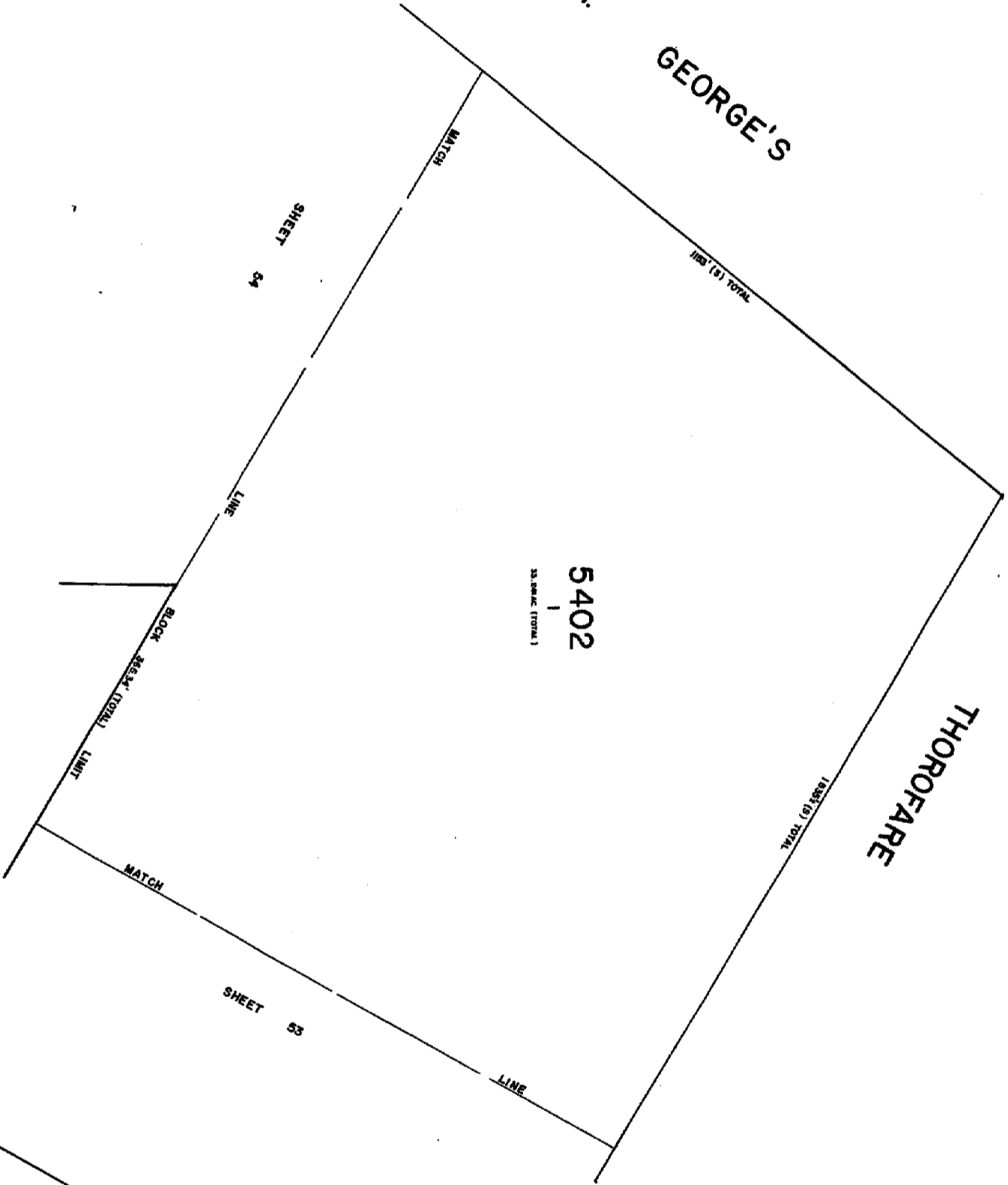
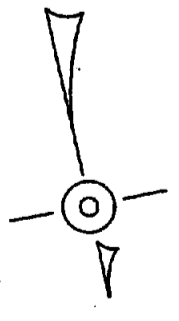
185' (5) TOTAL

35.0000 (TOTAL)

BLACK 2922' (TOTAL) LIMIT

SHEET 53

SHEET 54



GULL

COVE

ARBEGAST DRIVE

TAX MAP

CITY OF BRIGANTINE

ATLANTIC COUNTY, NEW JERSEY

SCALE 1" = 50'

JAN 1986

WILLIAM C. KISSANE, N.J.L.S. NO. 19427

115 SO. CHESTNUT ST. PLEASANTVILLE, N.J.

REGISTERED PROFESSIONAL ENGINEER, N.J. REG. NO. 12718

NEW JERSEY DEPARTMENT OF THE TREASURER
LOCAL AGENTSHIP OF REVENUE
LICENSED TO COLLECT TAXES AND
FOR THE DIRECTOR, DIVISION OF REVENUE
OF THE COUNTY OF BRIGANTINE
BY
W. C. Kissane P.E., L.S.
LIC. 115474
EXPIRES 12/31/86