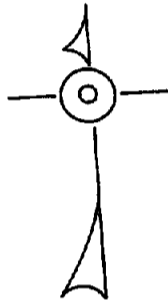


SPALDING PLACE  
FOWNES (50')  
DUNLAP PLACE  
AVENUE

HAGEN (50') ROAD

SHERIDAN



EAST SHORE

KIRKWOOD

CITY EXEMPTED  
6004

BOULEVARD

(50')

CIRCLE

DRIVE

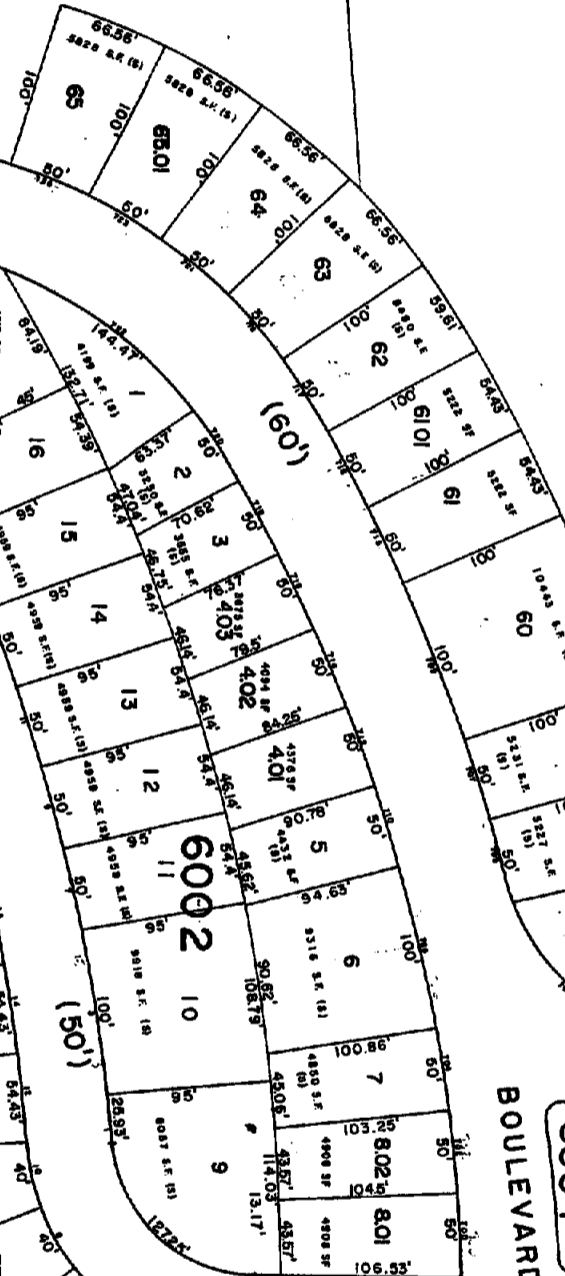
60  
406

MACDONALD

MACDERMOTT

PLACE

PLACE



NEW BRIGANTINE  
LOCAL AUTHORITY AND PUBLIC UTILITY SERVICE  
APPROVED AS A TAX MAP PURSUANT TO THE  
PROVISIONS OF THE CITY CHARTER AND THE  
PROVISIONS OF THE STATE CONSTITUTION OF NEW JERSEY  
BY THE CITY ENGINEERING SECTION  
DATE: FEB. 2, 1981  
*John J. Spillone*  
CITY ENGINEER  
NEW BRIGANTINE, N.J.

**TAX MAP**  
CITY OF BRIGANTINE  
ATLANTIC COUNTY, NEW JERSEY  
SCALE 1" = 50'  
**WILLIAM C. KISSANE** J.M. 1985  
115 SO. CHESTNUT ST. PLEASANTVILLE, N.J.  
ATTORNEY AT LAW