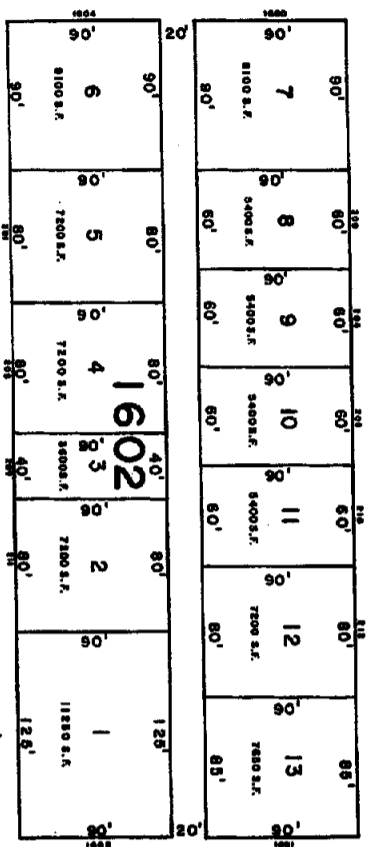
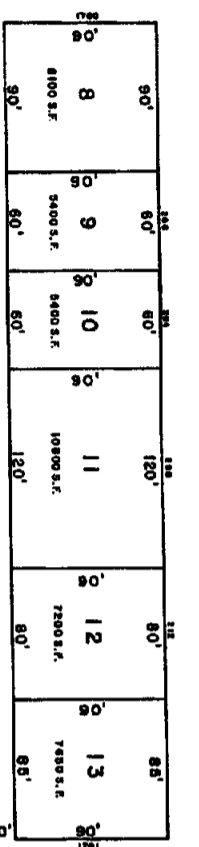


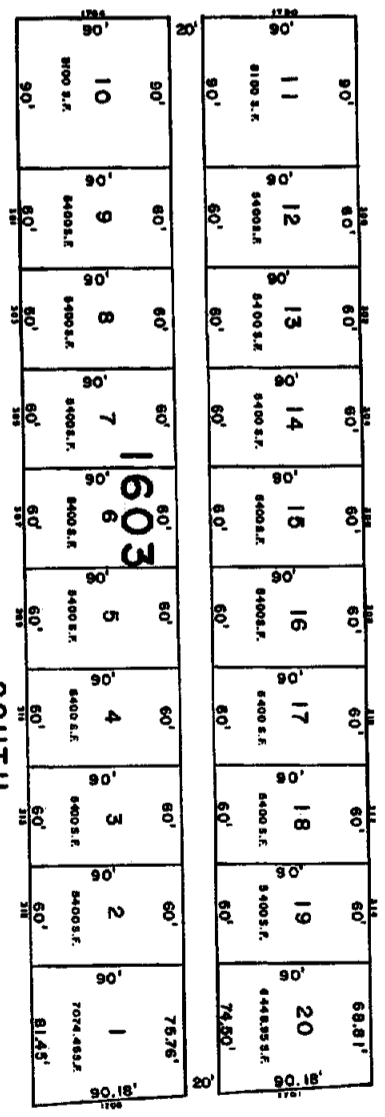
SIXTEENTH (60')



SEVENTEENTH (60')

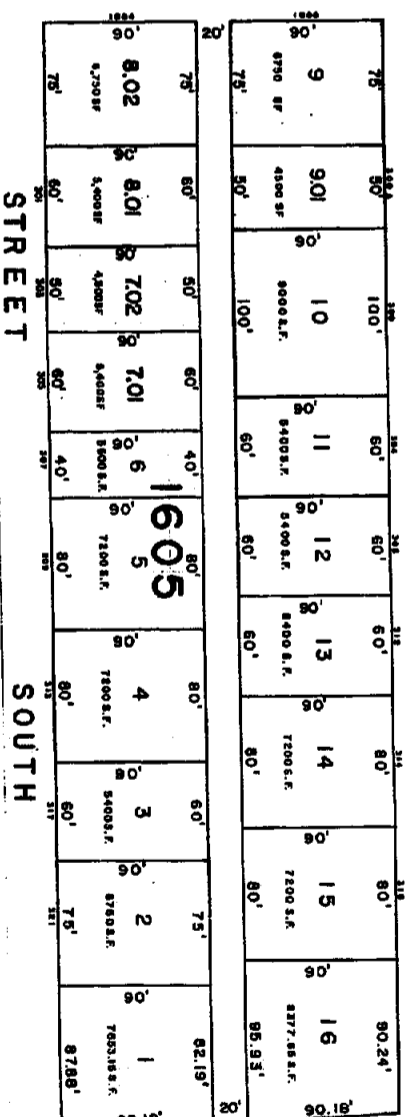


AVENUE (100')



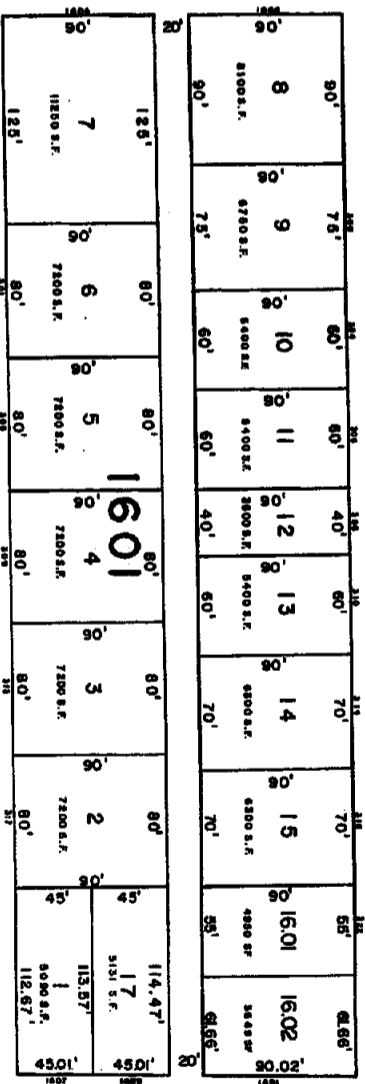
EIGHTEENTH (60')

BRIGHTINE (100')



NINETEENTH (60')

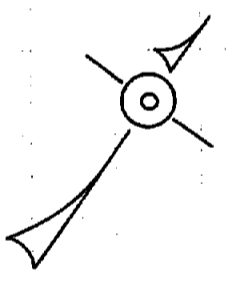
STREET SOUTH



STREET SOUTH

STREET SOUTH

STREET SOUTH



NEW, SEPT. 23, 1935

RELEVANT DEPARTMENT OF THE DISTRICT
LOCAL PROPERTY AND PUBLIC UTILITY TAXES
APPROVED AS A TAX MAP FOR THE CITY OF
BRIGANTINE, NEW JERSEY, BY THE
COMMISSIONER OF REVENUE, DIVISION OF TAXATION,
STATE OF NEW JERSEY, ON JANUARY 16, 1980.

John P. Kistner
City Engineering Section
LIC. #1314
CHAPTER 2 L. 1985, LOCAL TAX MAP ACT

TAX MAP
CITY OF BRIGANTINE
ATLANTIC COUNTY, NEW JERSEY
SCALE 1" = 50'
WILLIAM C. KISSANE, AL.L.S., M.D. 1947
38 301 CHESTNUT ST., PHILADELPHIA, PA. 19106
PREPARED BY: JAN. 1980