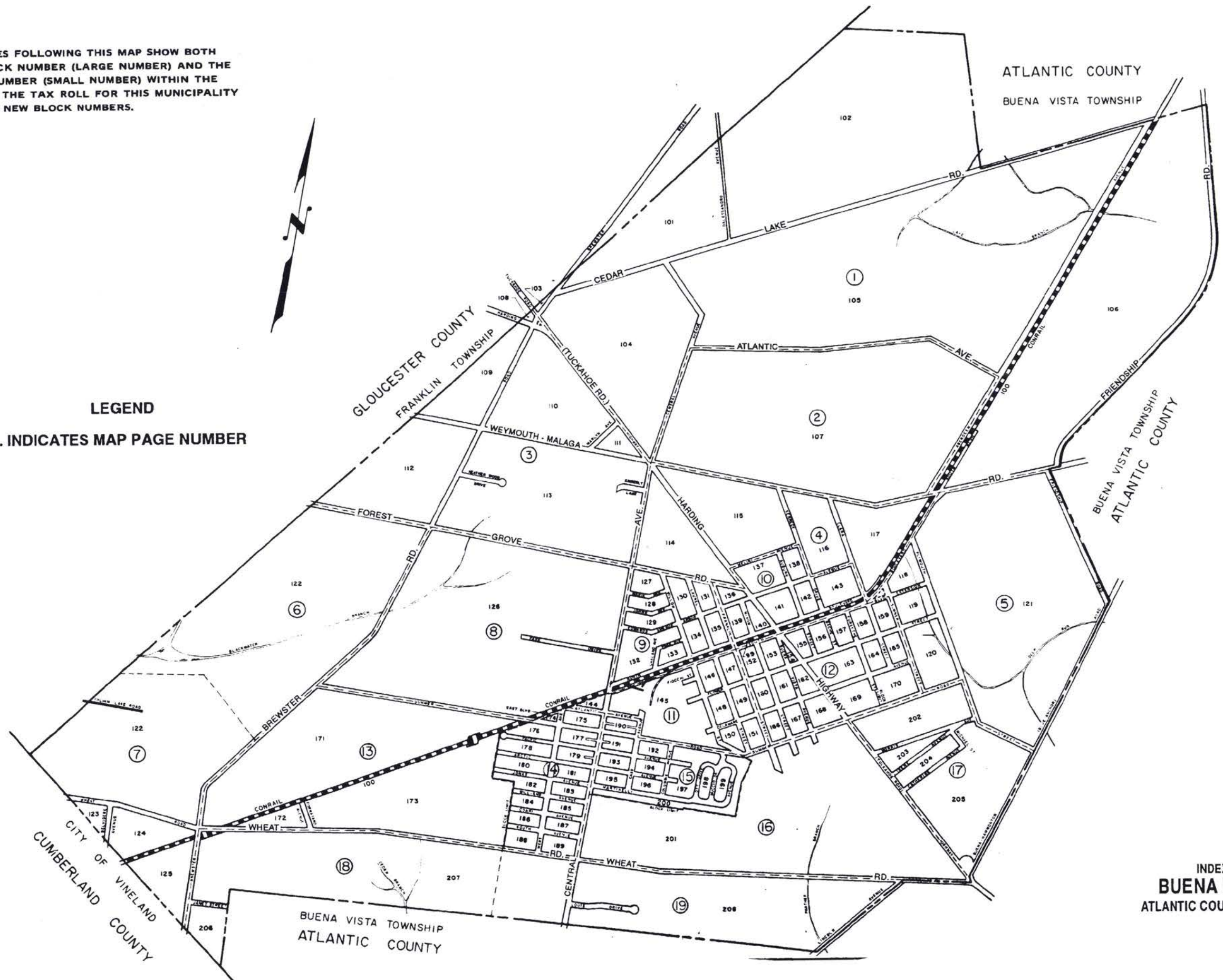


NOTE: THE MAP PAGES FOLLOWING THIS MAP SHOW BOTH THE NEW BLOCK NUMBER (LARGE NUMBER) AND THE OLD BLOCK NUMBER (SMALL NUMBER) WITHIN THE SAME CIRCLE. THE TAX ROLL FOR THIS MUNICIPALITY MATCHES THE NEW BLOCK NUMBERS.

**LEGEND**  
 ② ... INDICATES MAP PAGE NUMBER



INDEX MAP OF  
**BUENA BOROUGH**  
 ATLANTIC COUNTY, NEW JERSEY

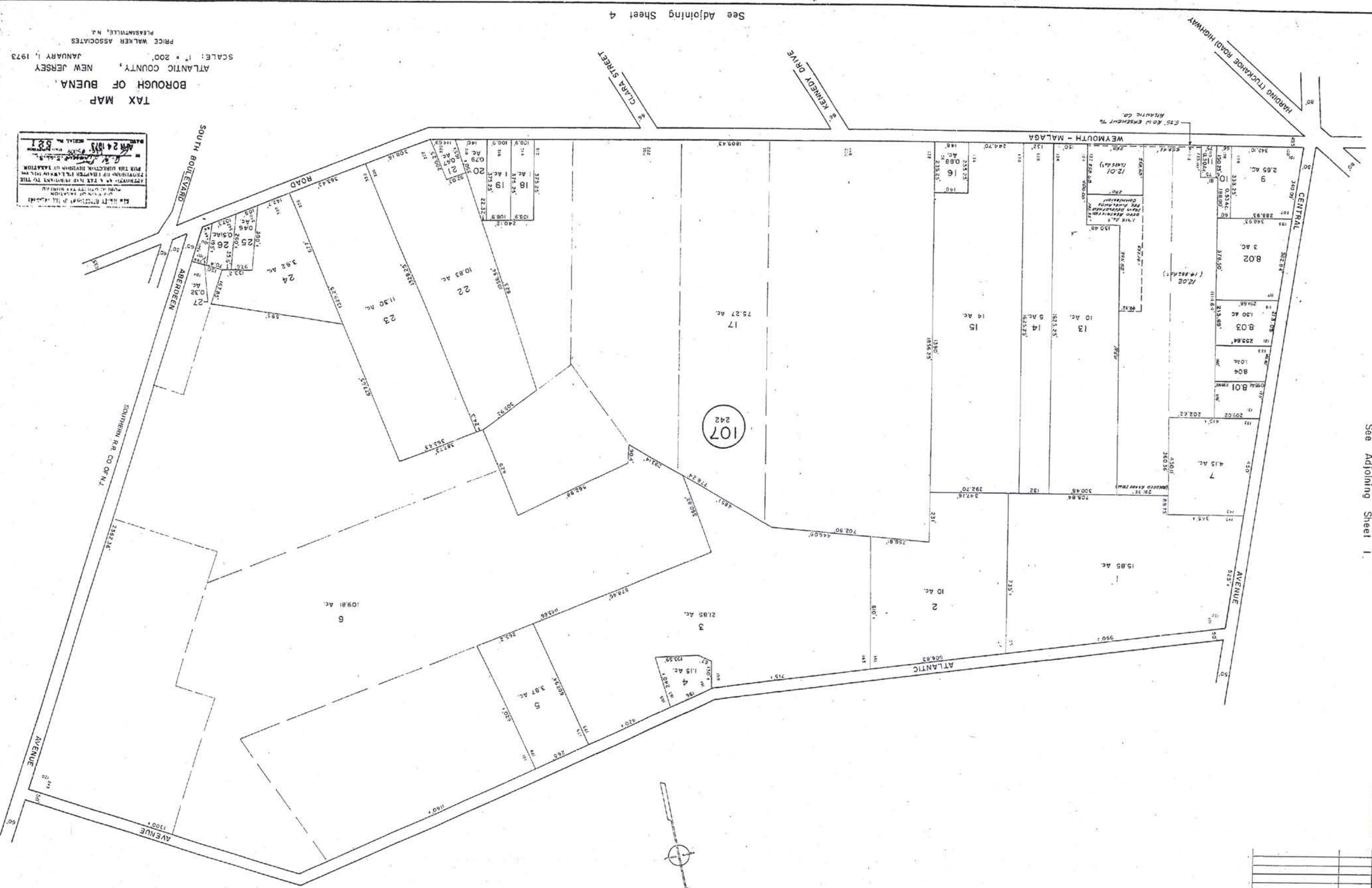
**NOTES**



DATE	REVISIONS
11-7-71	A. G. B. WALKER, P.L.S.
5-26-75	CHAS. R. BISHOP, P.L.S.

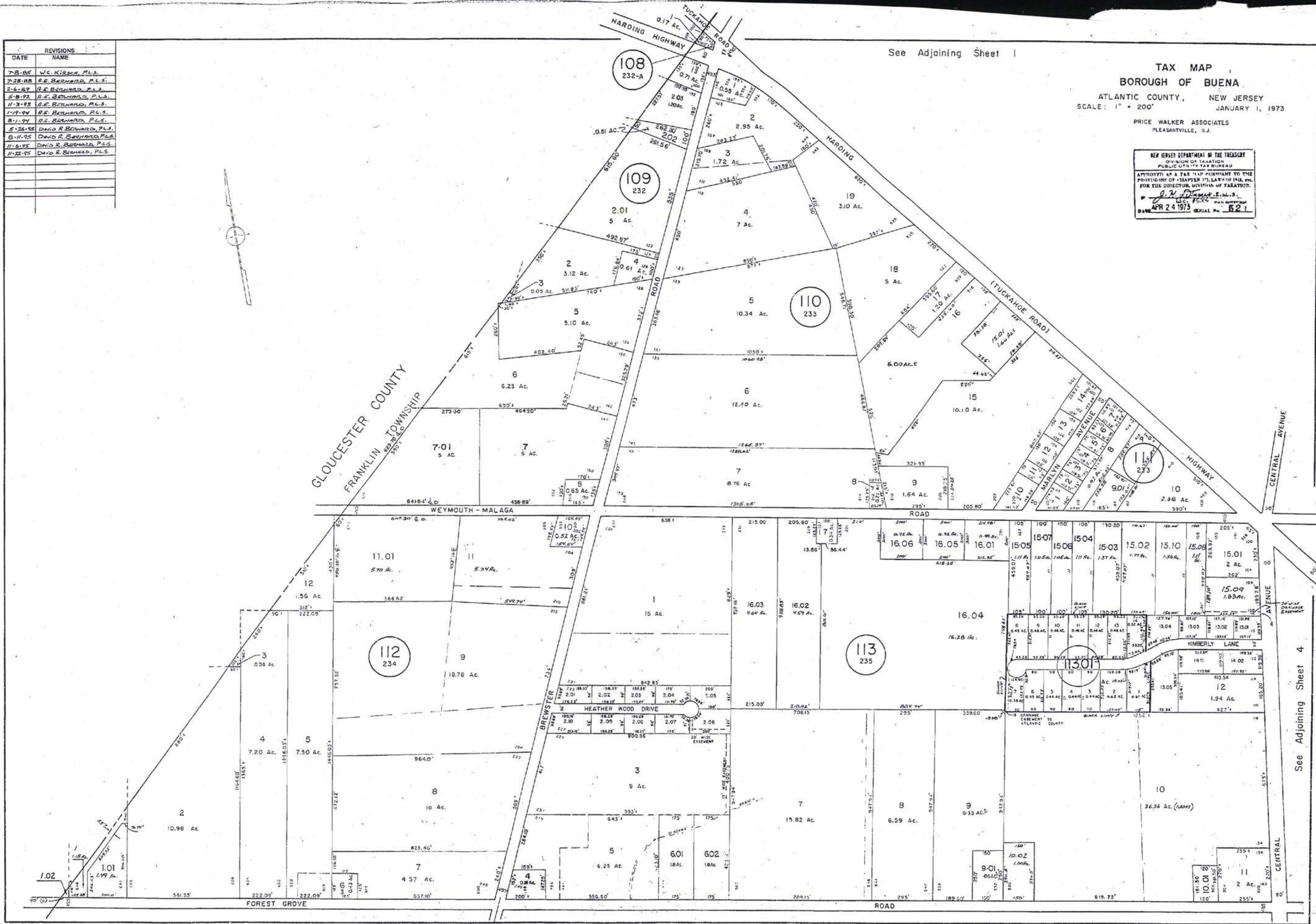
See Adjoining Sheet 1

See Adjoining Sheet 1



Map No. 107-242  
 Date: 1/1/73  
 Project: Tax Map  
 Scale: 1" = 200'  
 Author: Price Walker Associates  
 Date of Issue: 1/1/73

REVISIONS	
DATE	NAME
7-8-65	W.C. KIRCH, P.L.S.
7-28-68	D.E. BERNARD, P.L.S.
2-6-67	D.E. BERNARD, P.L.S.
5-8-72	D.E. BERNARD, P.L.S.
11-3-73	D.E. BERNARD, P.L.S.
1-17-74	D.E. BERNARD, P.L.S.
8-1-74	D.E. BERNARD, P.L.S.
5-26-75	DAVID R. BERNARD, P.L.S.
8-11-75	DAVID R. BERNARD, P.L.S.
11-6-75	DAVID R. BERNARD, P.L.S.
1-22-75	DAVID R. BERNARD, P.L.S.



See Adjoining Sheet 1

TAX MAP  
BOROUGH OF BUENA  
ATLANTIC COUNTY, NEW JERSEY  
SCALE: 1" = 200'  
JANUARY 1, 1973

NEW JERSEY DEPARTMENT OF THE TREASURY  
DIVISION OF TAXATION  
PUBLIC UTILITY TAX BUREAU  
APPROVED AS A TAX MAP PURSUANT TO THE  
PROVISIONS OF CHAPTER 12, LAWS OF 1968, P.L.  
FOR THE DIRECTOR, DIVISION OF TAXATION.  
D. W. [Signature]  
APR 24 1973 SERIAL No. 621

See Adjoining Sheet 6

See Adjoining Sheet 8

See Adjoining Sheet 4

REVISIONS	DATE	NAME
B-6-86	K.C. KIRCHEN, P.L.S.	
7-26-85	R.E. BERGMAN, P.L.S.	
5-26-85	DAVID S. BERGMAN, P.L.S.	
7-27-85	DAVID S. BERGMAN, P.L.S.	

See Adjoining Sheet 3

See Adjoining Sheet 2

See Adjoining Sheet 9

See Adjoining Sheet 10

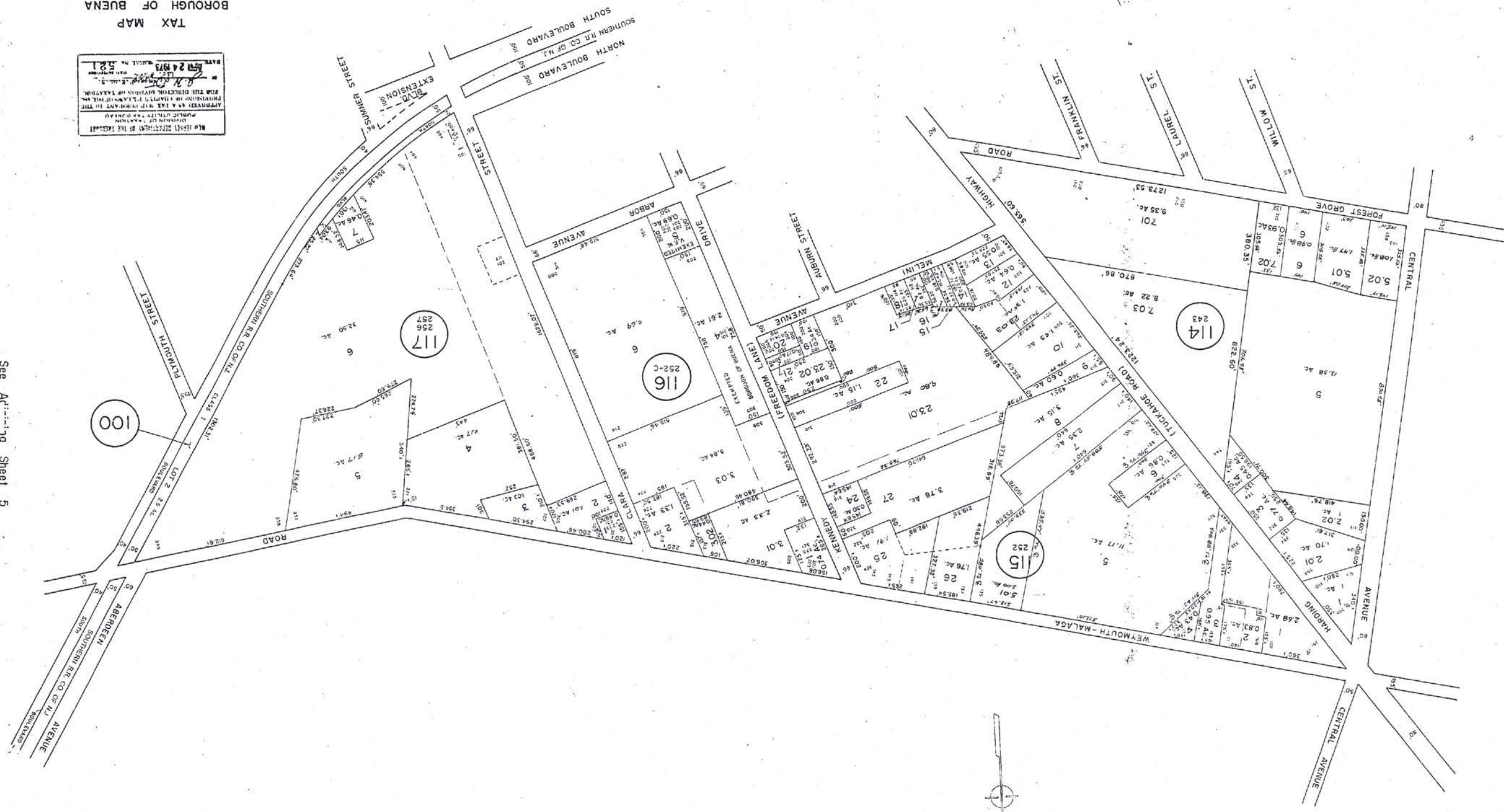
See Adjoining Sheet 5

**TAX MAP**

ATLANTIC COUNTY, NEW JERSEY  
 SCALE: 1" = 200'  
 JANUARY 1, 1973

PRICE WALKER ASSOCIATES  
 PLEASANTVILLE, N.J.

NEW JERSEY DEPARTMENT OF THE TREASURY  
 DIVISION OF TAXATION  
 APPROVED AS A TAX MAP PURSUANT TO THE  
 PROVISIONS OF PARAGRAPH 10 OF THE  
 ACT OF APRIL 22, 1952 (P.L. 1952-107)  
 FOR THE DIRECTOR, DIVISION OF TAXATION  
 DATE: 1/1/73  
 MAP NO. 521



426

See Adjoining Sheet 5

4

4

REVISIONS	
DATE	NAME
3-8-85	W.C. KIRSEN, P.L.S.
3-7-87	R.F. BERNARD, P.L.S.
1-1-93	R.F. BERNARD, P.L.S.
5-14-95	DAVID R. BERNARD, P.L.S.

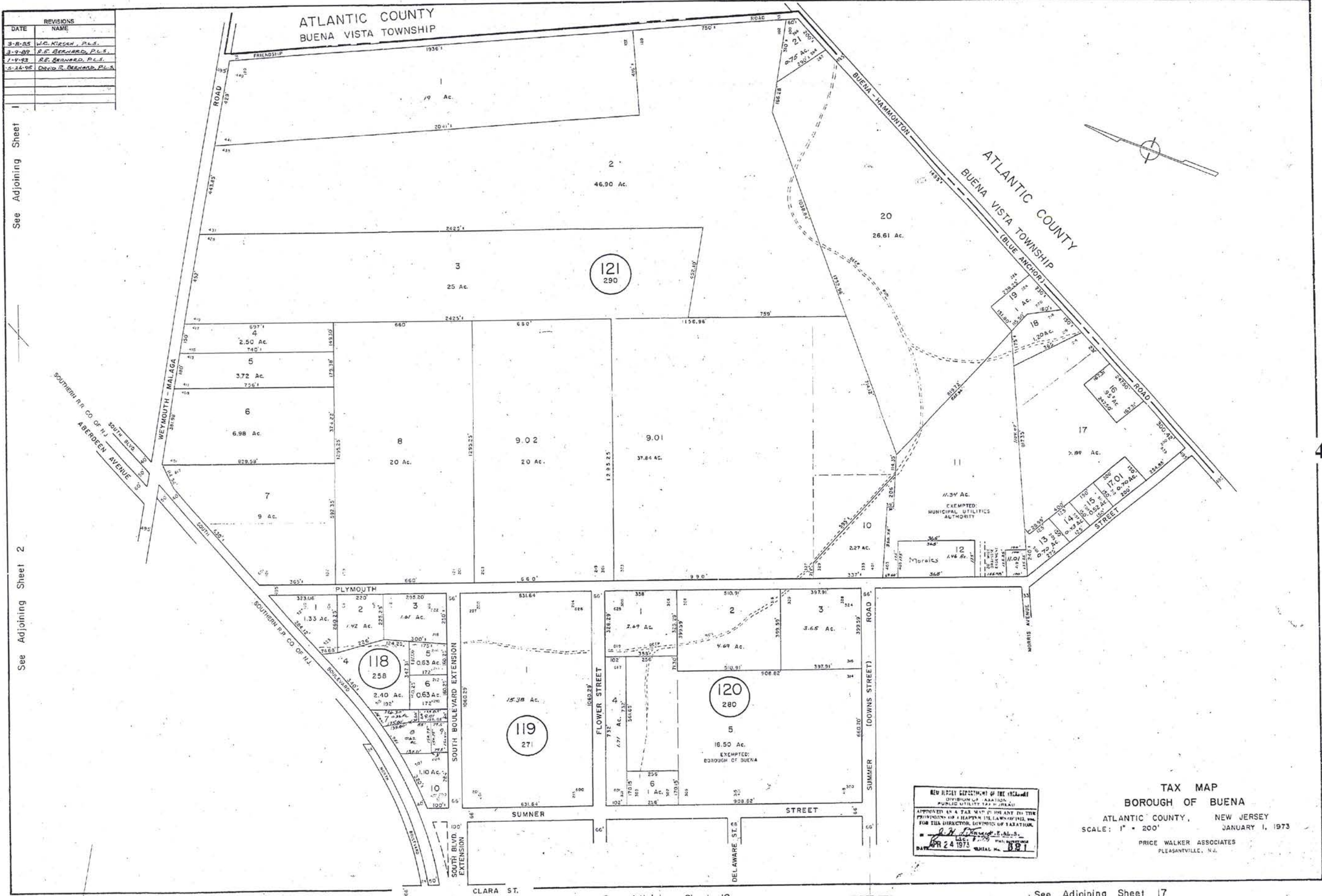
See Adjoining Sheet

See Adjoining Sheet 2

See Adjoining Sheet 4

See Adjoining Sheet 12

See Adjoining Sheet 17



NEW JERSEY DEPARTMENT OF THE TREASURY  
 DIVISION OF TAXATION  
 MUNICIPAL UTILITIES TAX MAP  
 APPROVED AS A TAX MAP OF BUENA VISTA TOWNSHIP BY THE  
 COMMISSIONERS OF TAXATION AND THE BOARD OF TAXATION  
 FOR THE DIRECTOR, DIVISION OF TAXATION  
 APR 24 1973

TAX MAP  
 BOROUGH OF BUENA  
 ATLANTIC COUNTY, NEW JERSEY  
 SCALE: 1" = 200'  
 JANUARY 1, 1973  
 PRICE WALKER ASSOCIATES  
 PLEASANTVILLE, N.J.

427

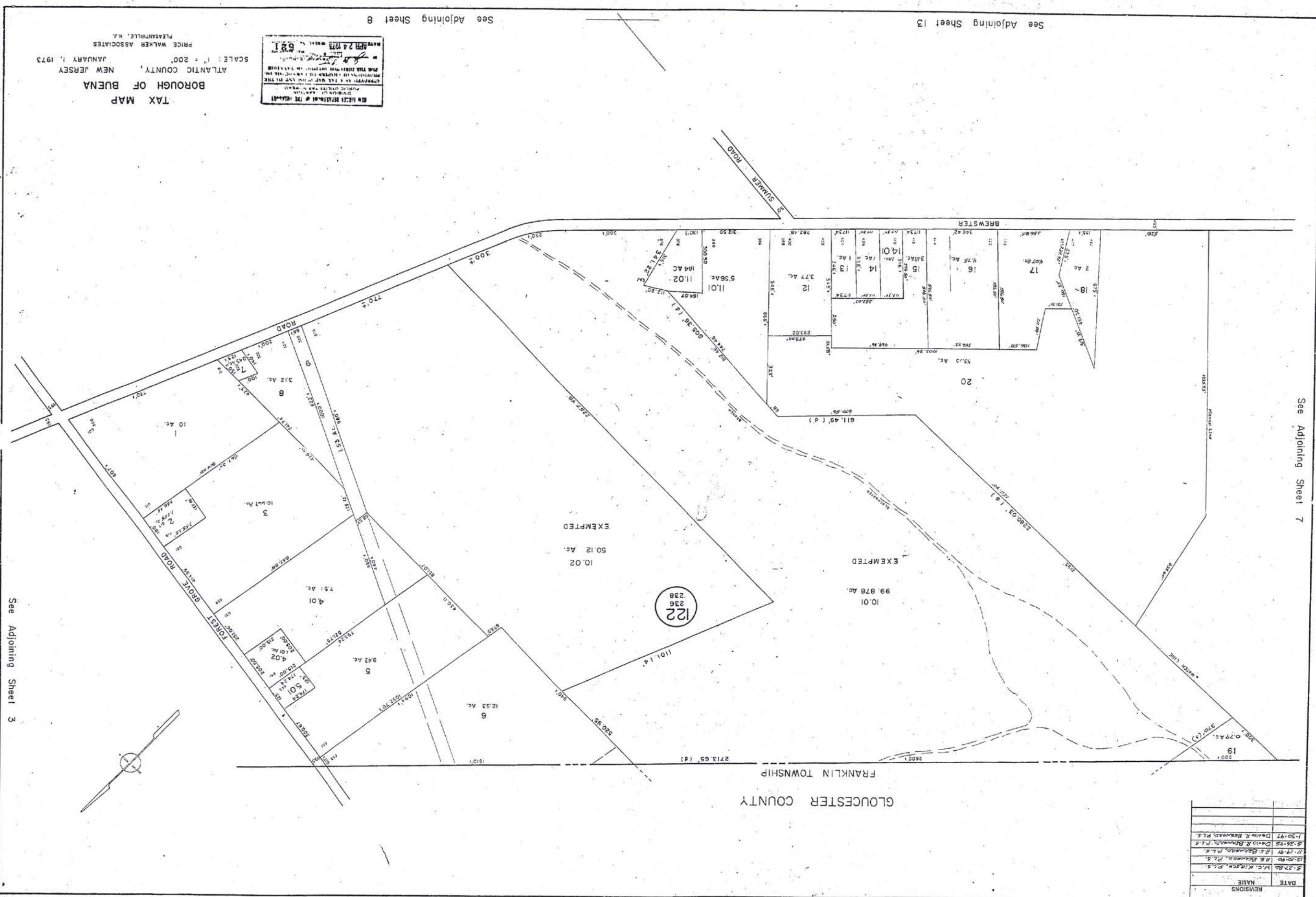
**TAX MAP**  
**BOROUGH OF BUENA**  
 ATLANTIC COUNTY, NEW JERSEY  
 JANUARY 1, 1973  
 SCALE: 1" = 200'  
 PRICE WALKER ASSOCIATES  
 PLEASANTVILLE, N.J.

REVISIONS  
 DATE NAME  
 5-27-88 W.C. KIRKIN, P.L.S.  
 12-02-89 H.E. BURMAN, P.L.S.  
 11-18-91 H.C. BURMAN, P.L.S.  
 5-26-95 DANN R. BURMAN, P.L.S.  
 1-30-97 DANN R. BURMAN, P.L.S.

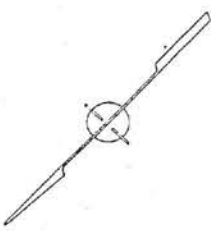
See Adjoining Sheet 8

See Adjoining Sheet 13

See Adjoining Sheet 7



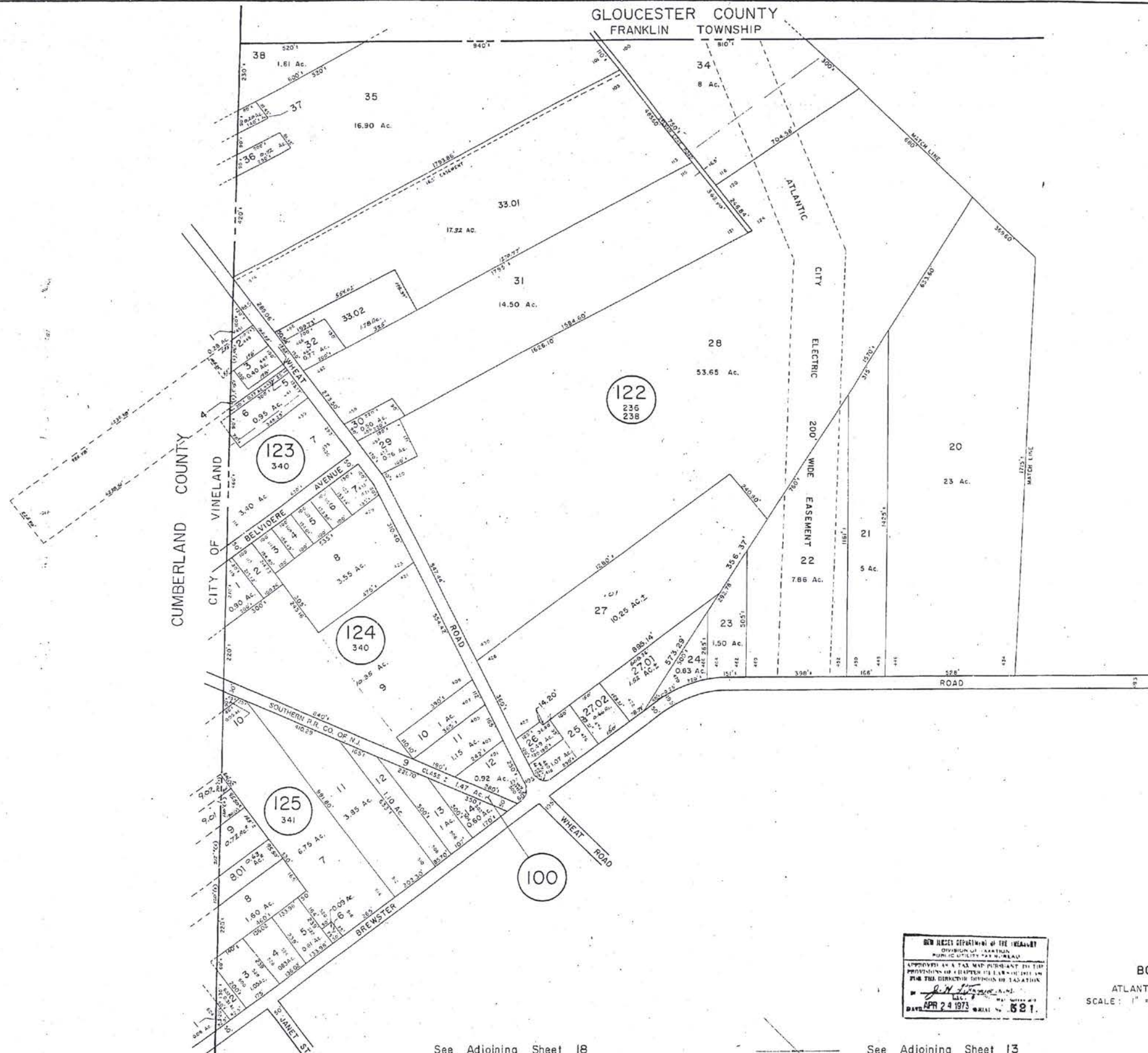
See Adjoining Sheet 3



DATE	NAME
5-27-88	W.C. KIRKIN, P.L.S.
12-02-89	H.E. BURMAN, P.L.S.
11-18-91	H.C. BURMAN, P.L.S.
5-26-95	DANN R. BURMAN, P.L.S.
1-30-97	DANN R. BURMAN, P.L.S.



REVISIONS	
DATE	NAME
1-16-85	W.E. KIRSCH, P.L.S.
1-17-85	R.E. BEAUMONT, P.L.S.
1-17-85	R.E. BEAUMONT, P.L.S.
8-1-89	R.E. BEAUMONT, P.L.S.
5-26-95	DAVID R. BEAUMONT, P.L.S.
1-30-97	DAVID R. BEAUMONT, P.L.S.



See Adjoining Sheet 6

429

NEW JERSEY DEPARTMENT OF THE TREASURY  
 DIVISION OF TAXATION  
 PUBLIC UTILITY TAX BUREAU  
 APPROVED AS A TAX MAP PURSUANT TO THE  
 PROVISIONS OF CHAPTER 128 OF TITLE 54  
 OF THE STATUTES OF NEW JERSEY AS AMENDED  
 BY THE DIRECTOR OF THE DIVISION OF TAXATION  
 BY: *[Signature]*  
 DATE: APR 24 1973 SERIAL NO. 521

TAX MAP  
 BOROUGH OF BUENA  
 ATLANTIC COUNTY, NEW JERSEY  
 SCALE: 1" = 200'  
 JANUARY 1, 1973  
 PRICE WALKER ASSOCIATES  
 PLEASANTVILLE, N.J.

See Adjoining Sheet 18

See Adjoining Sheet 13

DATE	REVISIONS	NAME
7-8-85	1	W.C. KIRKMAN, P.L.S.
7-8-85	2	M.E. BECKMAN, P.L.S.
11-17-81	3	M.E. BECKMAN, P.L.S.
11-17-81	4	M.E. BECKMAN, P.L.S.
5-11-73	5	M.E. BECKMAN, P.L.S.
5-16-73	6	DAVID A. BECKMAN, P.L.S.
1-30-77	7	DAVID A. BECKMAN, P.L.S.

See Adjoining Sheet 6

See Adjoining Sheet 13

See Adjoining Sheet 14

TAX MAP  
 BOROUGH OF BUENA  
 ATLANTIC COUNTY, NEW JERSEY  
 JANUARY 1, 1973  
 SCALE: 1" = 200'  
 PRICE WALKER ASSOCIATES  
 PLEASANTVILLE, N.J.

NEW HICEST STATEMENT OF THE REASSESSMENT  
 PUBLIC UTILITY TAX REASSESSMENT  
 BOROUGH OF BUENA, NEW JERSEY  
 APPROVED BY THE DIRECTOR OF TAXATION  
 JANUARY 24 1973  
 621

See Adjoining Sheet 11

See Adjoining Sheet 9



See Adjoining Sheet 3

430

8

8

REVISIONS	
DATE	NAME
7-8-85	W.C. KIRSH, P.L.S.
7-8-85	R.E. BEHREND, P.L.S.
1-3-90	R.E. BEHREND, P.L.S.
1-3-92	R.E. BEHREND, P.L.S.
8-1-94	R.E. BEHREND, P.L.S.
5-24-95	David R. Behrend, P.L.S.
1-30-97	David R. Behrend, P.L.S.

See Adjoining Sheet 4

See Adjoining Sheet 8

See Adjoining Sheet 4

See Adjoining Sheet 10



NEW JERSEY DEPARTMENT OF THE TREASURY  
 DIVISION OF TAXATION  
 PUBLIC UTILITY TAX BUREAU  
 APPROVED AS A TAX MAP PURSUANT TO THE  
 PROVISIONS OF CHAPTER 124 OF THE N.J.A.C.  
 FOR THE DIRECTOR, DIVISION OF TAXATION  
*[Signature]*  
 APR 24 1973

TAX MAP  
 BOROUGH OF BUENA  
 ATLANTIC COUNTY, NEW JERSEY  
 SCALE: 1" = 100' JANUARY 1, 1973  
 PRICE WALKER ASSOCIATES  
 PLEASANTVILLE, N.J.

TAX MAP  
 BOROUGH OF BUENA  
 ATLANTIC COUNTY, NEW JERSEY  
 SCALE: 1" = 100'  
 PRICE WALKER ASSOCIATES  
 PLEASANTVILLE, N.J.  
 JANUARY 1, 1973

SOUTH BLVD. EXTENSION

NORTH BOULEVARD  
 SOUTH BOULEVARD

APPROVED AS A TAX MAP SUBJECT TO THE  
 DIVISION OF TAXATION  
 MUNICIPALITY OF BUENA  
 APR 22 1973  
 521



See Adjoining Sheet 4

See Adjoining Sheet 9

DATE	REVISIONS
7-8-65	WALKER, P.L.S.
7-28-66	R.E. BENTON, P.L.S.
1-4-68	R.E. BENTON, P.L.S.
11-16-69	DAVID R. BENNETT, P.L.S.
5-26-95	DAVID R. BENNETT, P.L.S.
1-30-97	DAVID R. BENNETT, P.L.S.



See Adjoining Sheet 4

See Adjoining Sheet 8

See Adjoining Sheet 9

DATE	REVISIONS NAME
7-8-85	W.C. KIRSHEN, P.L.S.
2-6-89	R.E. BERNARD, P.L.S.
11-17-91	R.E. BERNARD, P.L.S.
9-18-92	R.E. BERNARD, P.L.S.
5-11-93	R.E. BERNARD, P.L.S.
8-11-94	R.E. BERNARD, P.L.S.
5-26-95	DAVID R. BERNARD, P.L.S.
1-30-97	DAVID R. BERNARD, P.L.S.

See Adjoining Sheet 14

See Adjoining Sheet 15

NEW JERSEY DEPARTMENT OF THE TREASURY  
 DIVISION OF TAXATION  
 PUBLIC UTILITY TAX DIVISION  
 APPROVED AS A TAX MAP PURSUANT TO THE  
 PROVISIONS OF CHAPTER 124, L.A.S. 1975, FOR  
 THE DIRECTOR, DIVISION OF TAXATION.  
 J. H. [Signature]  
 APR 24 1975  
 DATE: APR 24 1975

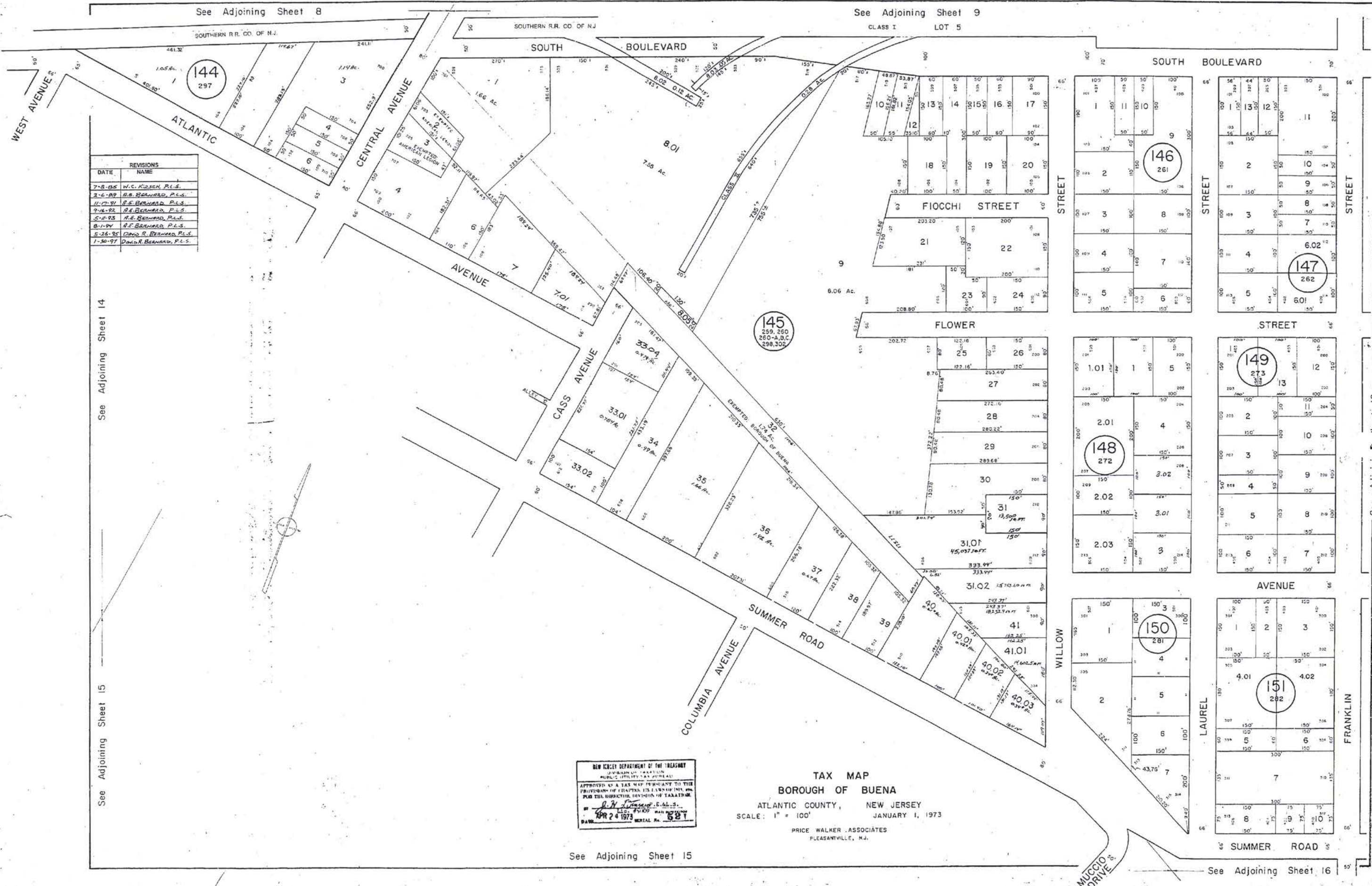
TAX MAP  
 BOROUGH OF BUENA  
 ATLANTIC COUNTY, NEW JERSEY  
 SCALE: 1" = 100'  
 JANUARY 1, 1973  
 PRICE WALKER ASSOCIATES  
 PLEASANTVILLE, N.J.

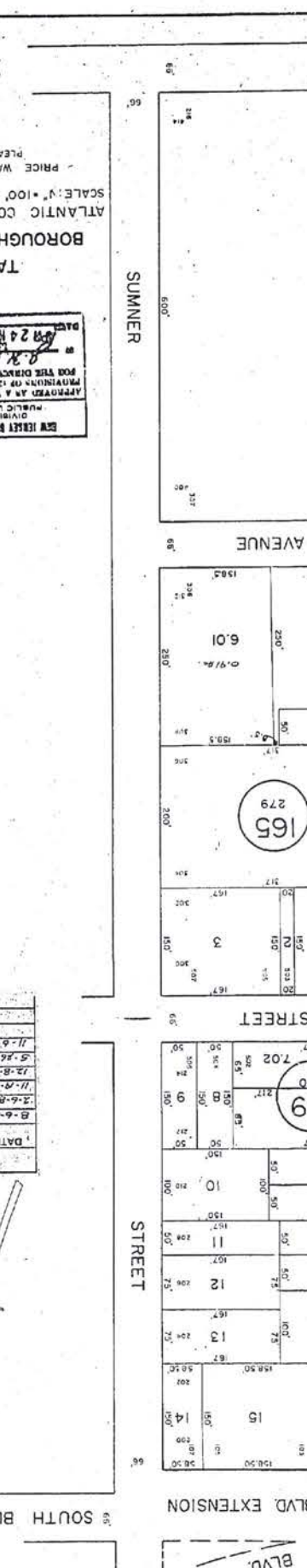
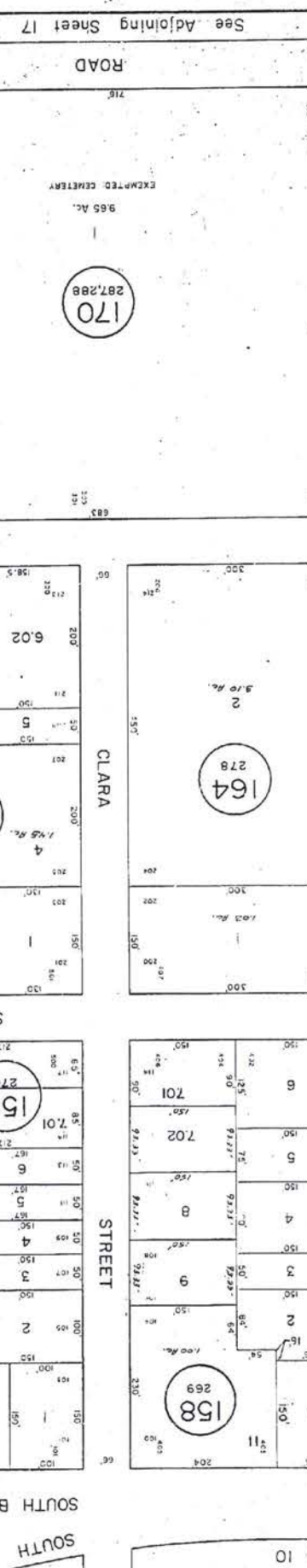
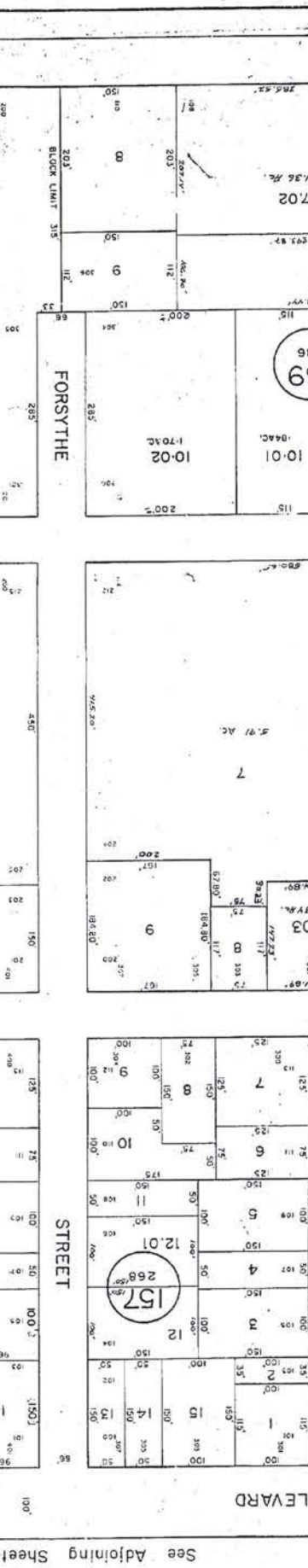
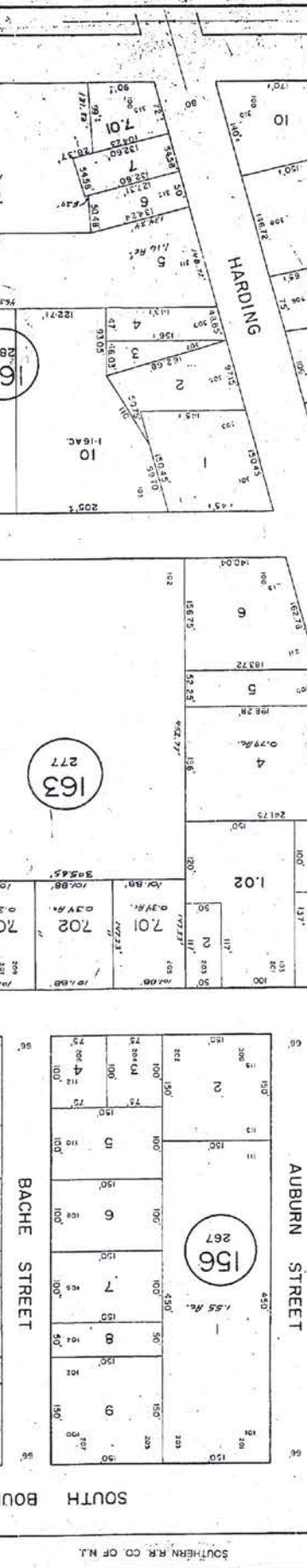
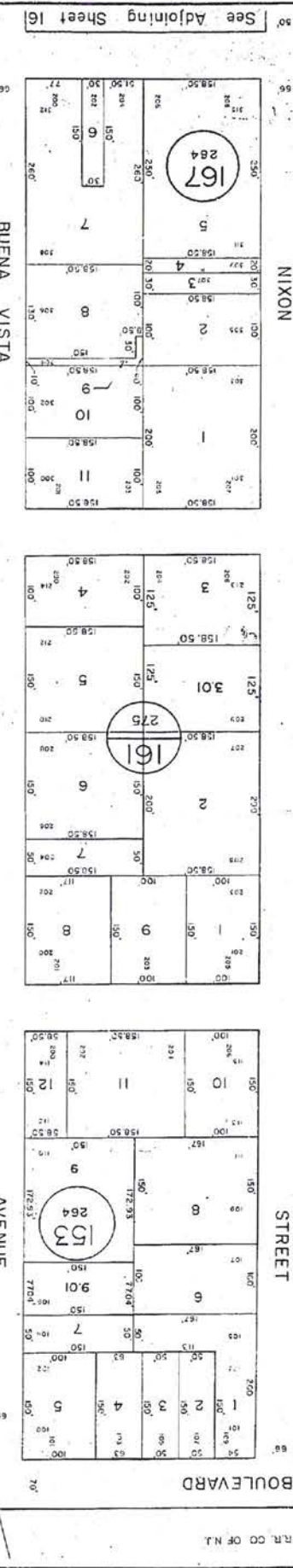
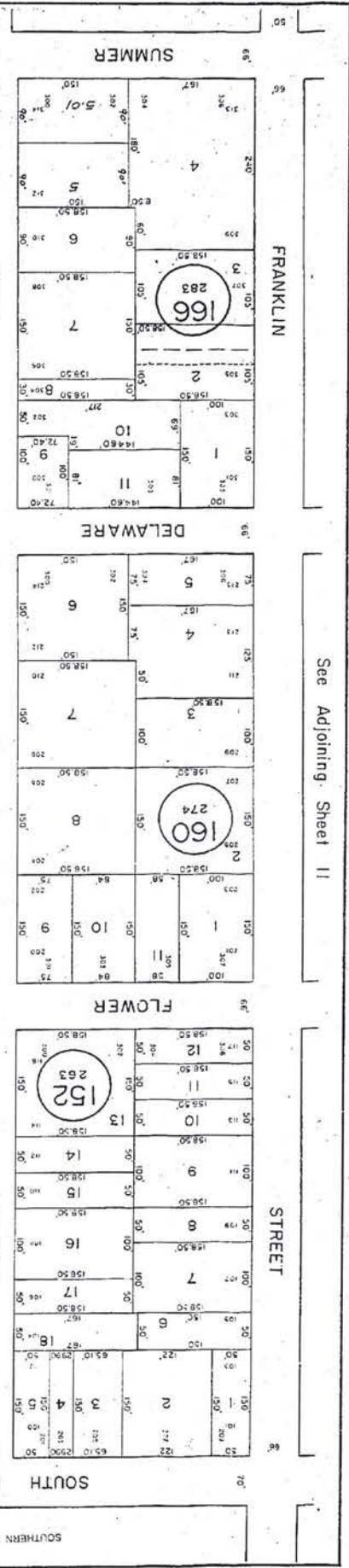
See Adjoining Sheet 15

See Adjoining Sheet 16

See Adjoining Sheet 12

433





FOR THE DEPARTMENT OF TREASURY  
DIVISION OF TAXATION  
PUBLIC UTILITY TAX BUREAU  
APPROVED AS A TAX MAP FOR THE  
PURPOSES OF THE TAX MAP ACT OF 1926  
AND THE DEPARTMENT OF TREASURY  
ON JANUARY 1, 1973  
BY THE DIRECTOR OF TAXATION  
J. J. [Signature]

**TAX MAP**  
BOROUGH OF BUENA  
ATLANTIC COUNTY, NEW JERSEY  
SCALE: 1" = 100'  
JANUARY 1, 1973  
PRICE WALKER ASSOCIATES,  
PLEASANTVILLE, N.J.

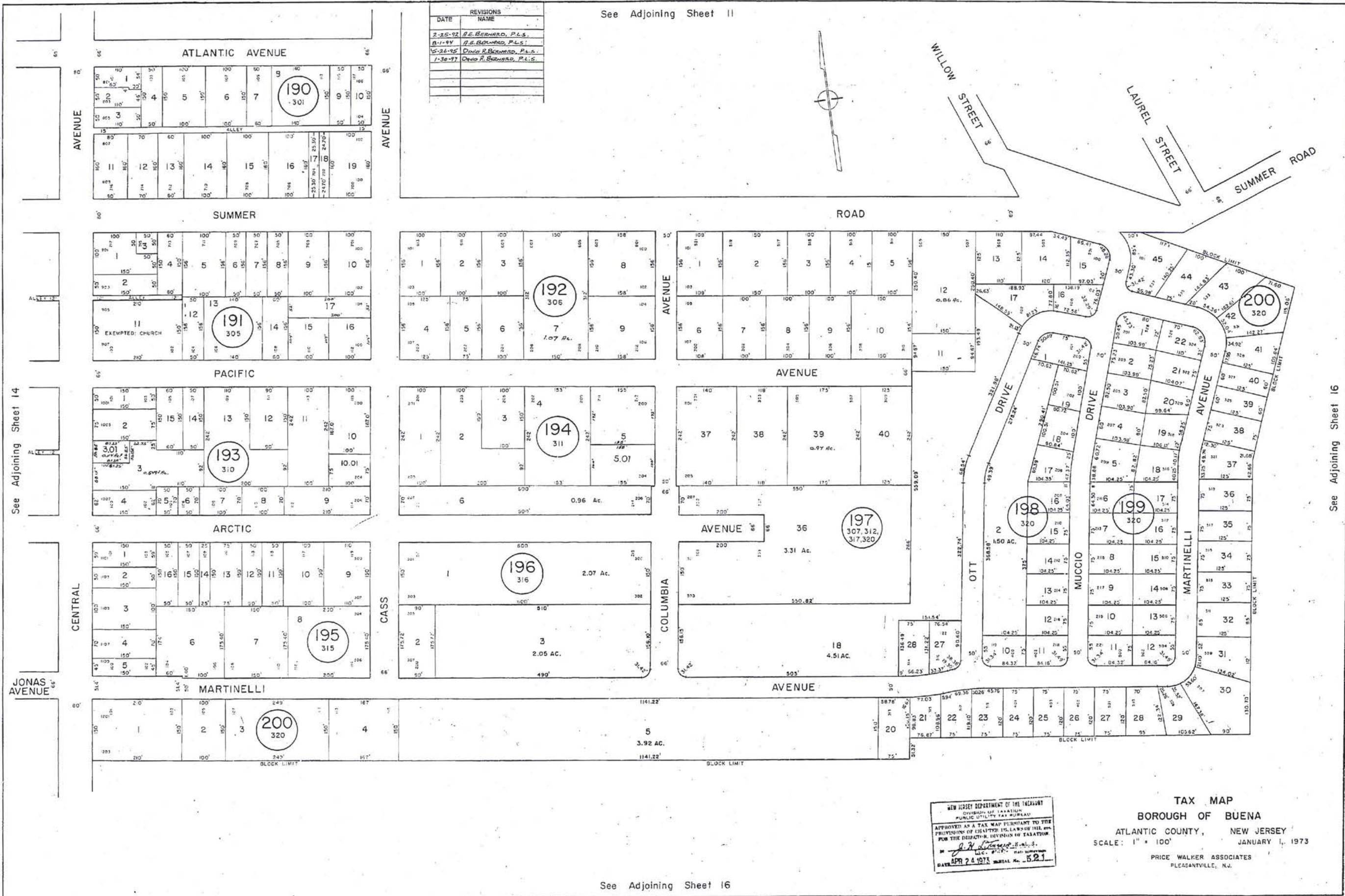
DATE	REVISIONS
11-6-66	W.C. KISSICK, P.E.S.
11-6-66	W.C. KISSICK, P.E.S.
11-6-66	W.C. KISSICK, P.E.S.
11-6-66	W.C. KISSICK, P.E.S.
11-6-66	W.C. KISSICK, P.E.S.
11-6-66	W.C. KISSICK, P.E.S.
11-6-66	W.C. KISSICK, P.E.S.
11-6-66	W.C. KISSICK, P.E.S.
11-6-66	W.C. KISSICK, P.E.S.
11-6-66	W.C. KISSICK, P.E.S.











See Adjoining Sheet 14

See Adjoining Sheet 16

See Adjoining Sheet 11

See Adjoining Sheet 16

NEW JERSEY DEPARTMENT OF THE TREASURY  
 DIVISION OF TAXATION  
 PUBLIC UTILITIES TAX BUREAU  
 APPROVED AS A TAX MAP PURSUANT TO THE  
 PROVISIONS OF CHAPTER 124, LAWS OF 1972, BY  
 FOR THE DIRECTOR, DIVISION OF TAXATION  
*J. H. ...*  
 DATE: APR 24 1973 SERIAL No. 521

TAX MAP  
 BOROUGH OF BUENA  
 ATLANTIC COUNTY, NEW JERSEY  
 SCALE: 1" = 100'  
 JANUARY 1, 1973  
 PRICE WALKER ASSOCIATES  
 PLEASANTVILLE, N.J.

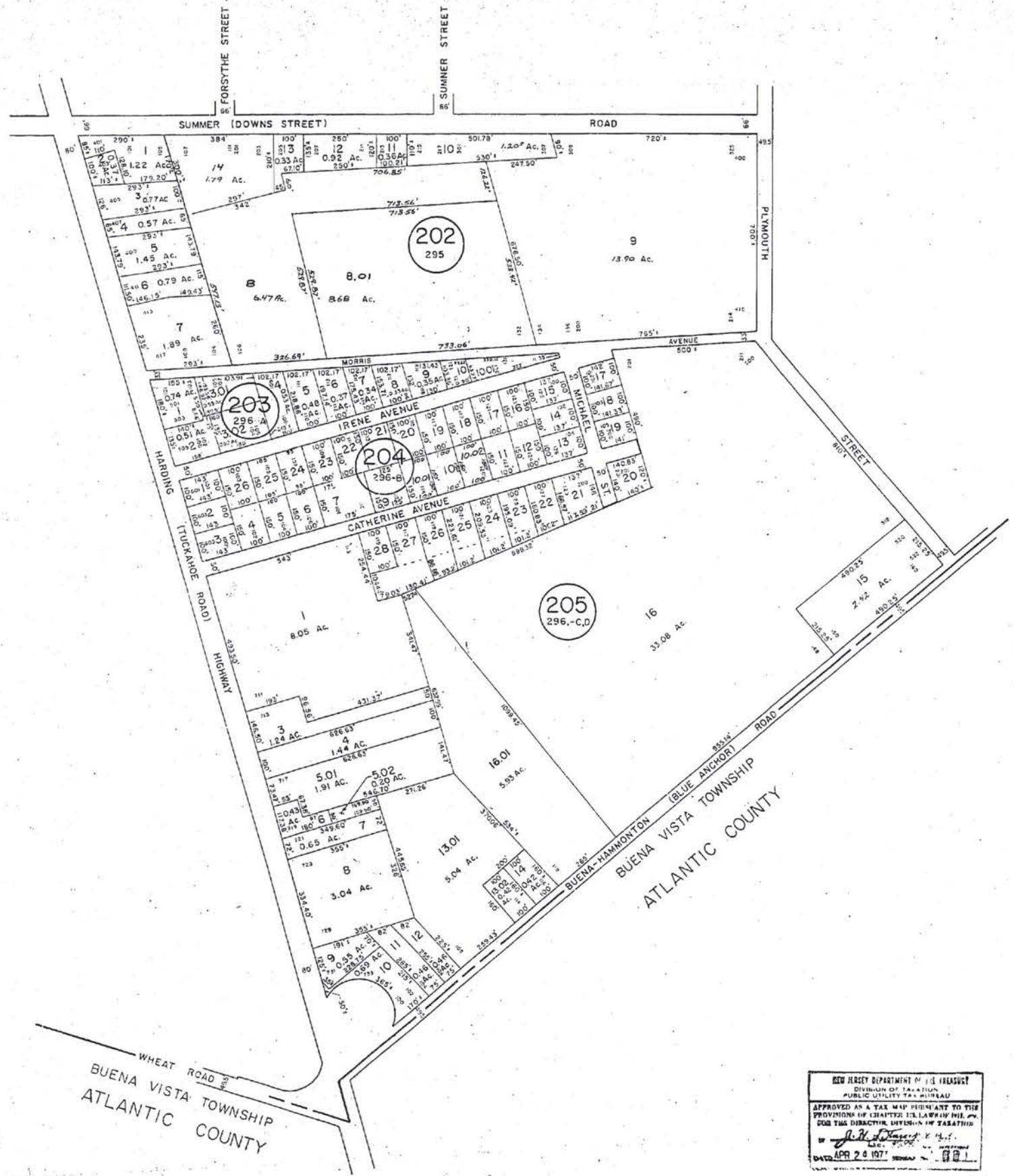


NEW JERSEY DEPARTMENT OF TREASURY  
 DIVISION OF TAXATION  
 APPROVED AS A TAX MAP PURSUANT TO THE  
 PROVISIONS OF CHAPTER 123, P.L. 1972,  
 FROM THE EFFECTIVE DATE OF EXAMINATION  
 APR 24 1973  
 DAYTON, OHIO

REVISIONS	DATE	NAME
3-8-85	W.C. KISSIN, P.E.S.	
4-10-87	MARILYN CRISAFULLA	
2-19-91	D.S. BROWNE, P.E.S.	
5-16-95	DAVID R. BROWN, P.E.S.	

REVISIONS	
DATE	NAME
11-27-80	M.G. JAMES, P.L.S.
7-28-80	R.F. BREWSTER, P.L.S.
2-18-83	DAVID R. BEHREND, P.L.S.
5-25-85	DAVID R. BEHREND, P.L.S.

See Adjoining Sheet 12      See Adjoining Sheet 5



See Adjoining Sheet 16

See Adjoining Sheet 5

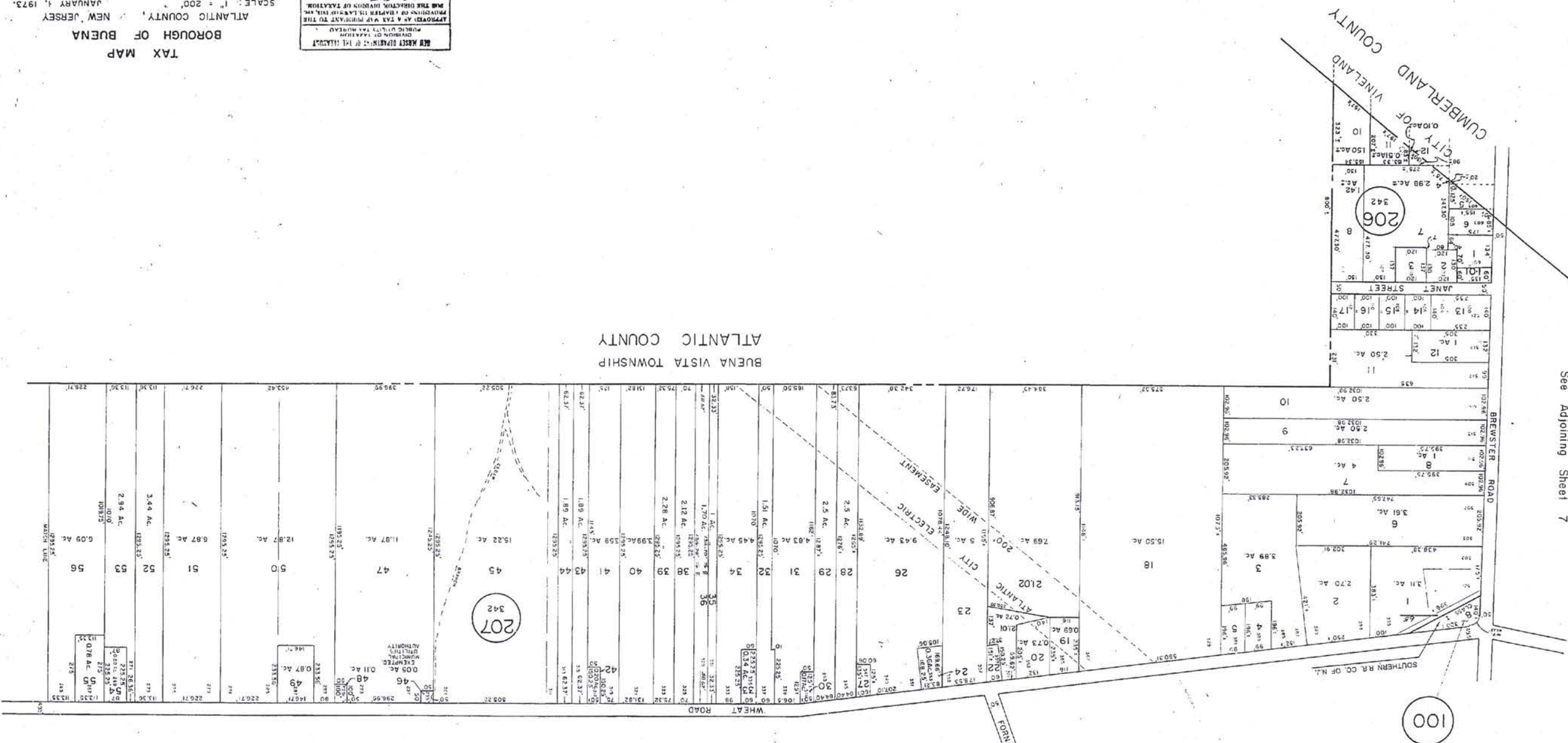
439

NEW JERSEY DEPARTMENT OF TREASURY  
 DIVISION OF TAXATION  
 PUBLIC UTILITY TAX BUREAU  
 APPROVED AS A TAX MAP PURSUANT TO THE  
 PROVISIONS OF CHAPTER 123, LAWS OF 1972,  
 FOR THE DIRECTOR, DIVISION OF TAXATION  
 BY *[Signature]*  
 DATE APR 28 1973

TAX MAP  
 BOROUGH OF BUENA  
 ATLANTIC COUNTY, NEW JERSEY  
 SCALE: 1" = 200'  
 JANUARY 1, 1973  
 PRICE WALKER ASSOCIATES  
 PLEASANTVILLE, N.J.

REVISIONS	DATE	NAME
3-8-55	L.C. KIRSHEN, P.L.S.	
12-17-53	R.E. BERNARD, P.L.S.	
5-26-55	D.W.D. & BROTHERS, P.L.S.	

See Adjoining Sheet 7



NEW JERSEY DEPARTMENT OF TREASURY  
 DIVISION OF TAXATION  
 PUBLIC UTILITIES TAX MAPS  
 APPROVED AS TAX MAP PURSUANT TO THE  
 PROVISIONS OF CHAPTER 123, P.L. 1972  
 AND THE DEPARTMENT DIVISION OF TAXATION  
 APR 24 1973 MAIL NO. 521

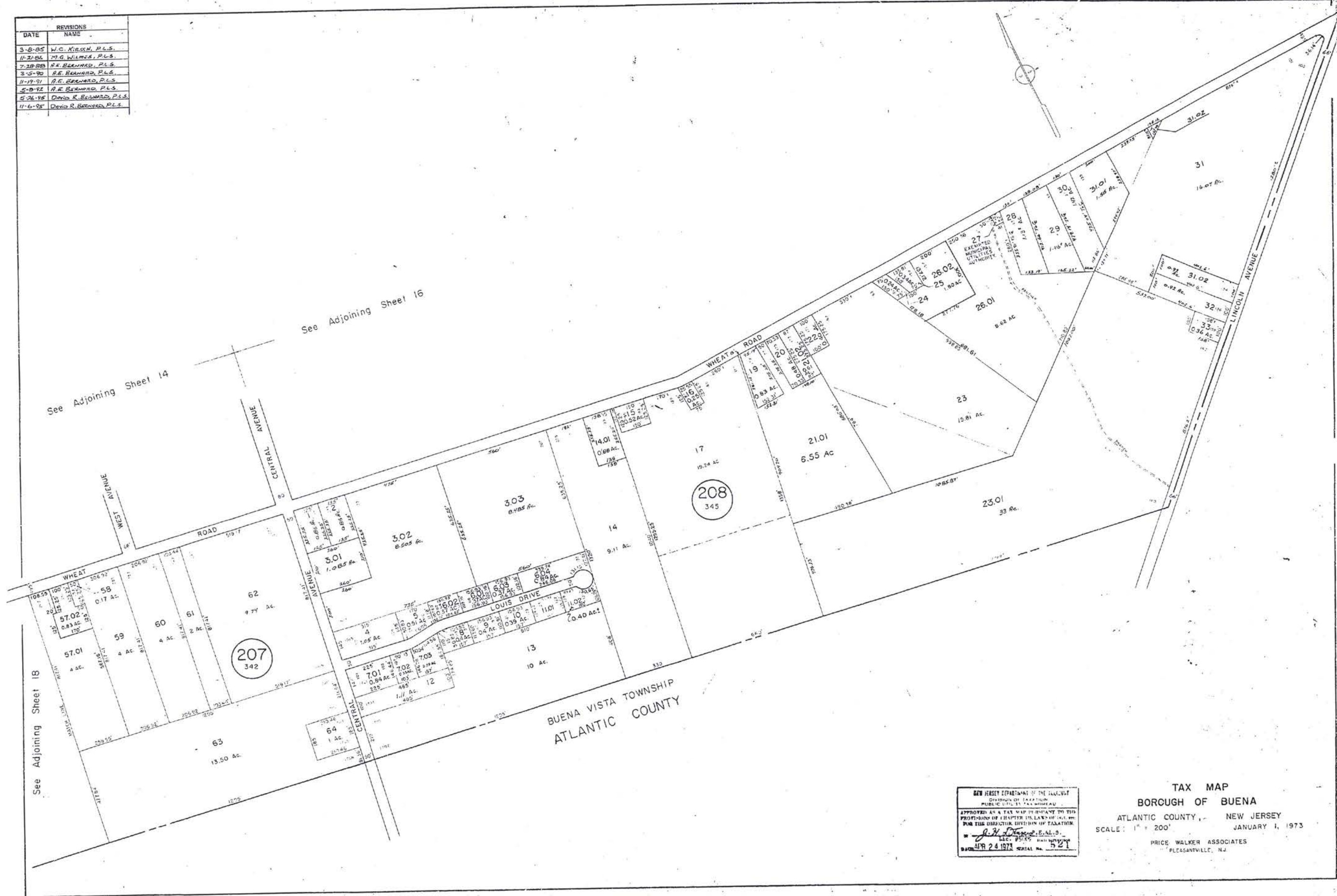
TAX MAP  
 BOROUGH OF BUENA  
 ATLANTIC COUNTY, NEW JERSEY  
 JANUARY 1, 1973.  
 SCALE: 1" = 200'  
 PRICE - WALKER ASSOCIATES  
 PLEASANTVILLE, N.J.

See Adjoining Sheet 13

See Adjoining Sheet 19

440

REVISIONS	
DATE	NAME
3-8-85	W.C. KILLEN, P.L.S.
11-21-86	M.G. WILMS, P.L.S.
7-28-88	R.E. BEHARD, P.L.S.
3-3-90	R.E. BEHARD, P.L.S.
11-19-91	R.E. BEHARD, P.L.S.
5-10-92	R.E. BEHARD, P.L.S.
5-26-95	DAVID R. BEHARD, P.L.S.
11-6-95	DAVID R. BEHARD, P.L.S.



See Adjoining Sheet 14

See Adjoining Sheet 16

See Adjoining Sheet 18

BUENA VISTA TOWNSHIP  
ATLANTIC COUNTY

NEW JERSEY DEPARTMENT OF THE TREASURY  
DIVISION OF TAXATION  
PUBLIC UTILITIES TAX BUREAU  
APPROVED AS A TAX MAP IN ACCORDANCE WITH THE  
PROVISIONS OF CHAPTER 124, L.A.S. 1975, BY  
THE DIRECTOR, DIVISION OF TAXATION  
*J. H. Thomas, E.S.L.S.*  
LIC. 25125  
DATE: APR 24 1977 SERIAL No. 521

TAX MAP  
BOROUGH OF BUENA  
ATLANTIC COUNTY, NEW JERSEY  
SCALE: 1" = 200'  
JANUARY 1, 1973  
PRICE WALKER ASSOCIATES  
PLEASANTVILLE, N.J.

