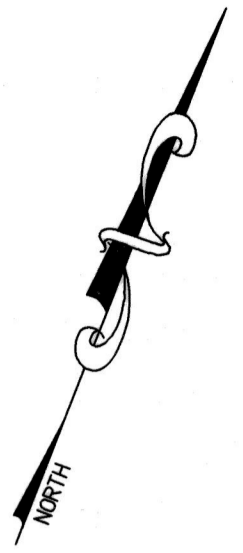
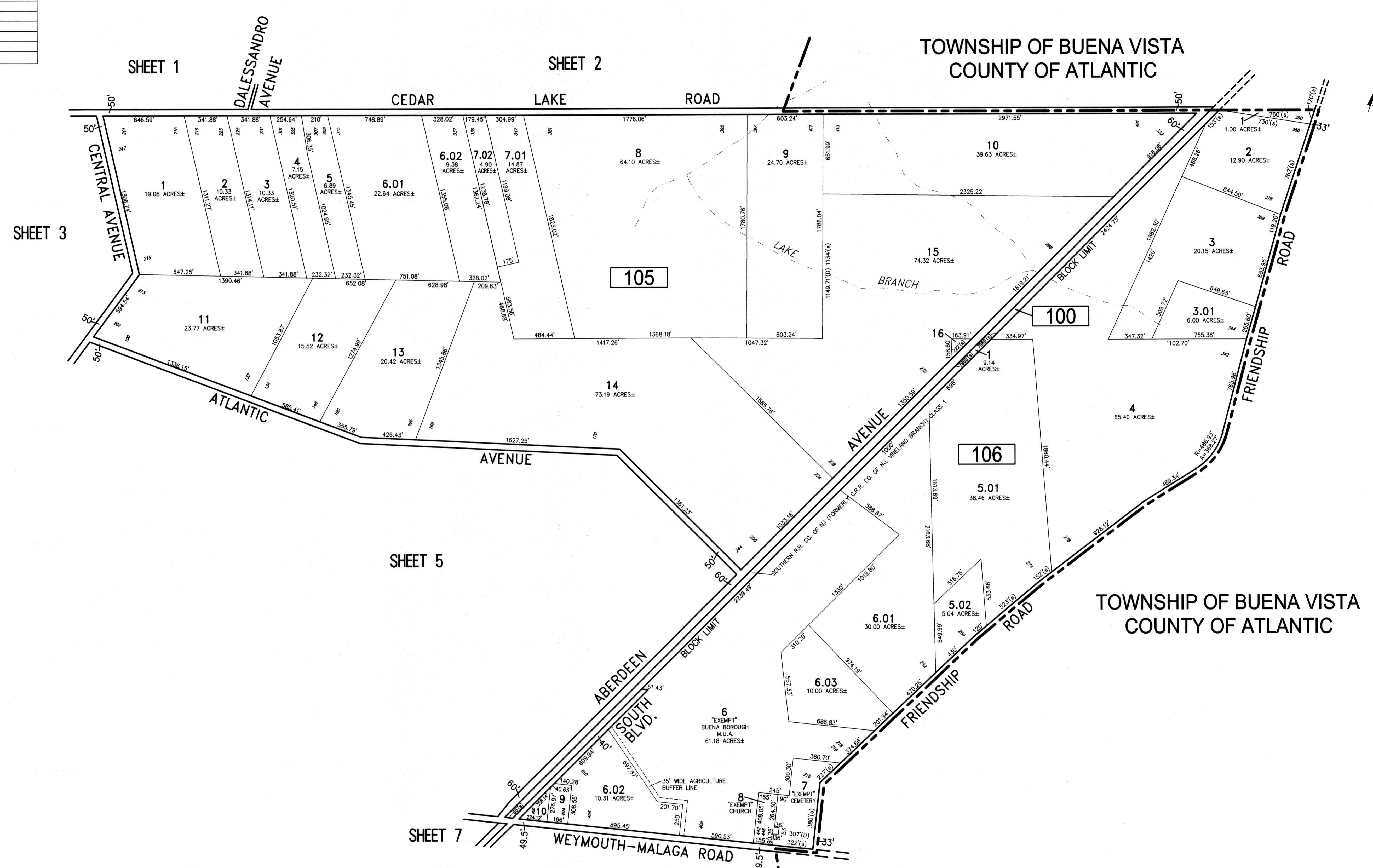


REVISIONS		
DATE	NAME	NO.

NOTE:
THIS SHEET HAS BEEN DRAWN USING COMPUTER AIDED DRAFTING/DESIGN (CAD/D) AND COORDINATE GEOMETRY (COGO).



NEW JERSEY DEPARTMENT OF THE TREASURY
DIVISION OF TAXATION
APPROVED AS A TAX MAP PURSUANT TO THE AUTHORITY OF
N.J.S.A. 54:1-15 AND N.J.S.A. 54:50-1
FOR THE DIRECTOR, DIVISION OF TAXATION
Charles E. Adamson
CHIEF, PROPERTY ADMINISTRATION
Charles E. Adamson
SUPERVISOR, TAX MAPS SECTION, VALUATION AND MAPPING
DATE NOV 22 2019 SERIAL NO. 1107

TAX MAP
BOROUGH OF BUENA
ATLANTIC COUNTY NEW JERSEY
SCALE: 1" = 400' DATE: 3-12-2019
CHARLES E. ADAMSON N.J.P.L.S. LIC. NO. 42627
REMINGTON & VERNICK ENGINEERS
845 N. MAIN STREET, PLEASANTVILLE, N.J. 08232
(609) 645-7110, FAX (609) 645-7076, WEB SITE ADDRESS: WWW.RVE.COM
Certificate of Authorization: 24 GA 28003300
-ENGINEERING EXCELLENCE-