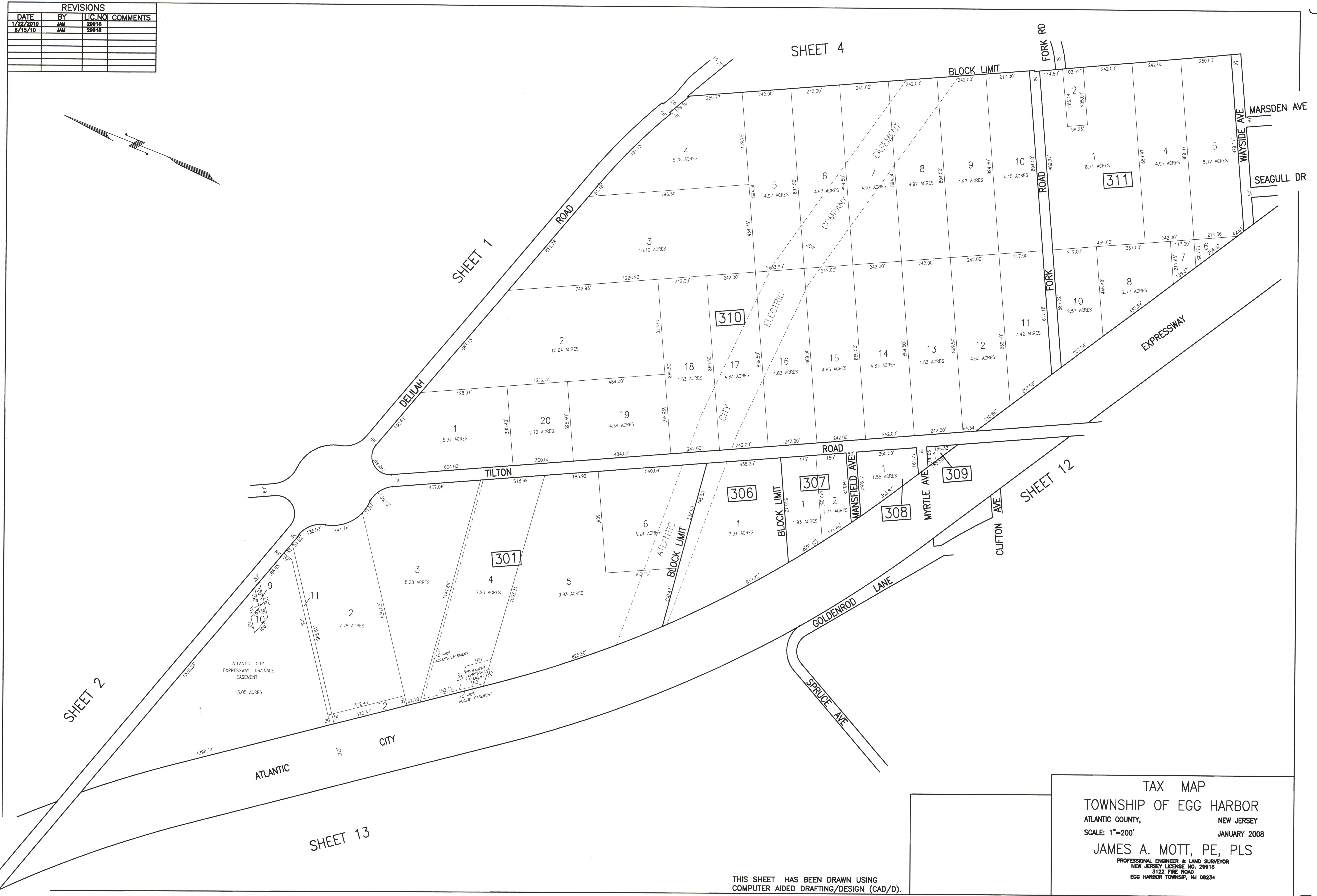
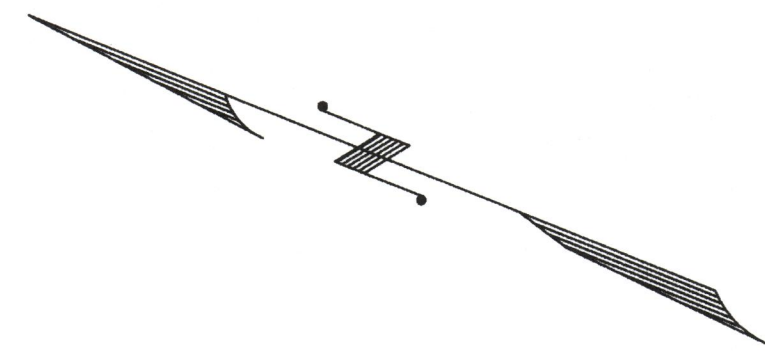


REVISIONS			
DATE	BY	LIC. NO.	COMMENTS
1/22/2010	JAM	29018	
6/15/10	JAM	29018	



**TAX MAP**  
 TOWNSHIP OF EGG HARBOR  
 ATLANTIC COUNTY, NEW JERSEY  
 SCALE: 1"=200'  
 JANUARY 2008  
**JAMES A. MOTT, PE, PLS**  
PROFESSIONAL ENGINEER & LAND SURVEYOR  
 NEW JERSEY LICENSE NO. 29018  
 3122 FIRE ROAD  
 EGG HARBOR TOWNSHIP, NJ 08234

THIS SHEET HAS BEEN DRAWN USING  
COMPUTER AIDED DRAFTING/DESIGN (CAD/D).