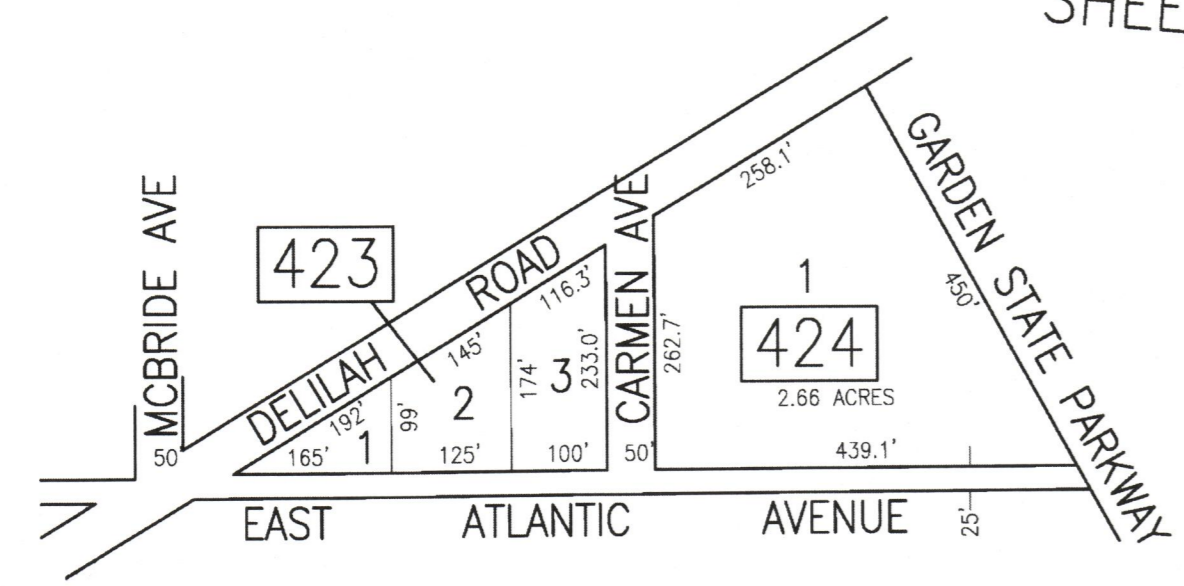
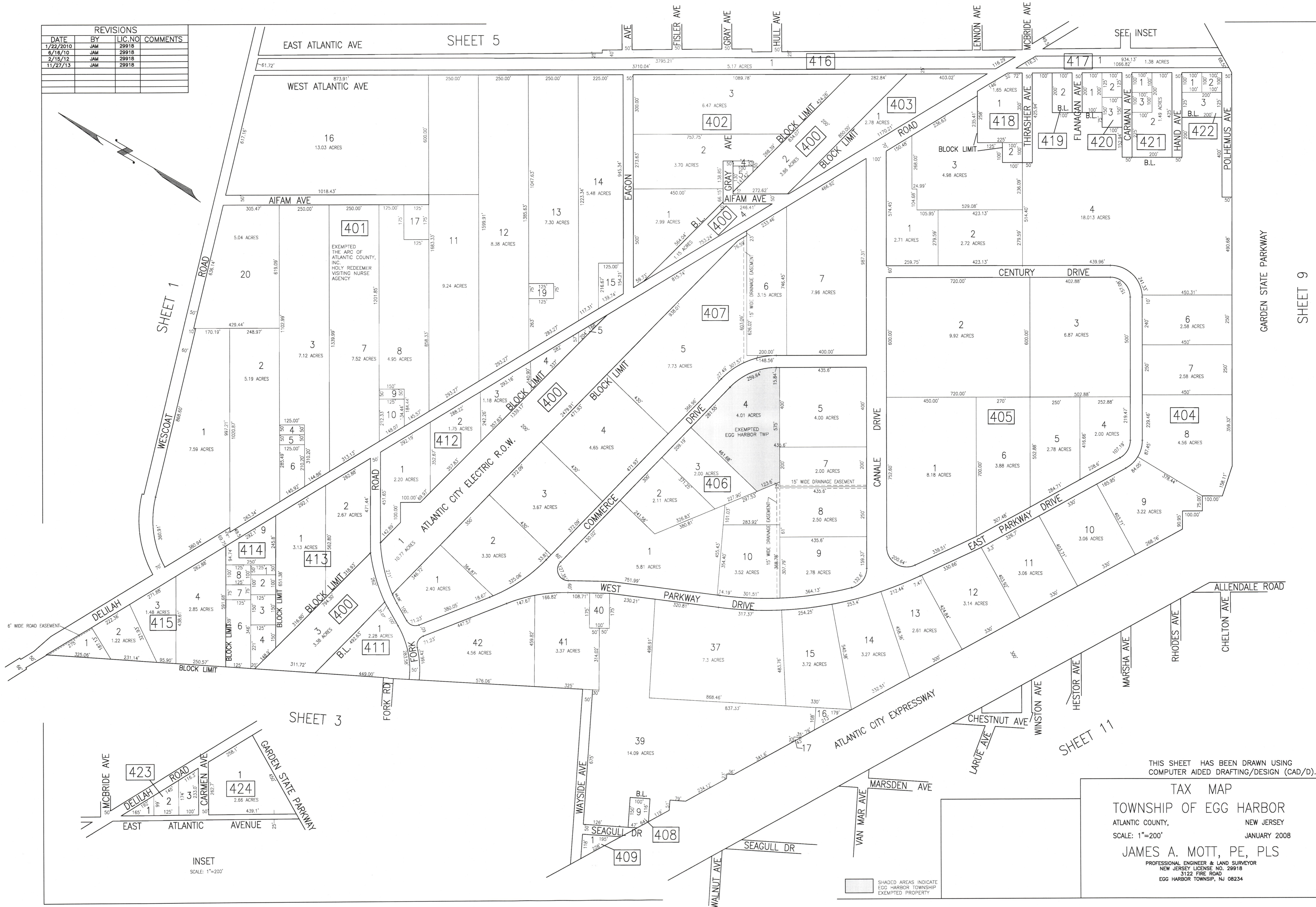
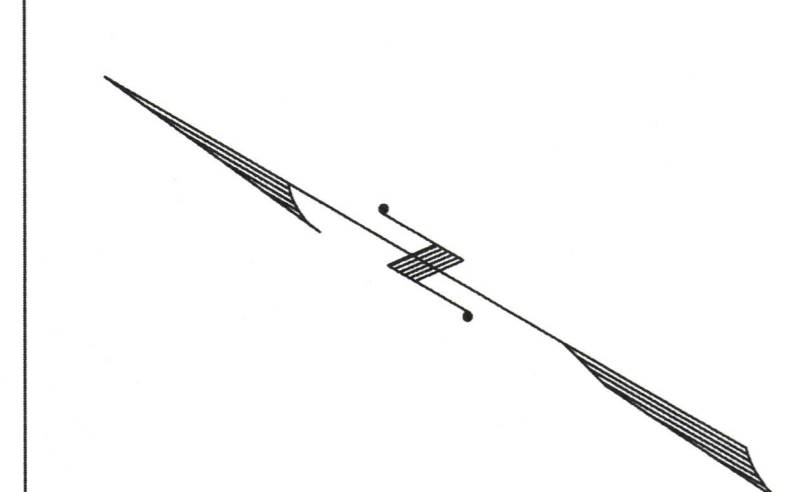


REVISIONS			
DATE	BY	LIC. NO.	COMMENTS
1/22/2010	JAM	29918	
6/16/10	JAM	29918	
2/15/12	JAM	29918	
11/27/13	JAM	29918	

SHEET 5



INSET  
SCALE: 1"=200'

THIS SHEET HAS BEEN DRAWN USING  
COMPUTER AIDED DRAFTING/DESIGN (CAD/D).

TAX MAP  
TOWNSHIP OF EGG HARBOR  
ATLANTIC COUNTY, NEW JERSEY  
SCALE: 1"=200' JANUARY 2008  
JAMES A. MOTT, PE, PLS  
PROFESSIONAL ENGINEER & LAND SURVEYOR  
NEW JERSEY LICENSE NO. 29918  
3122 FIRE ROAD  
EGG HARBOR TOWNSHIP, NJ 08234

SHADED AREAS INDICATE  
EGG HARBOR TOWNSHIP  
EXEMPTED PROPERTY

GARDEN STATE PARKWAY

SHEET 9