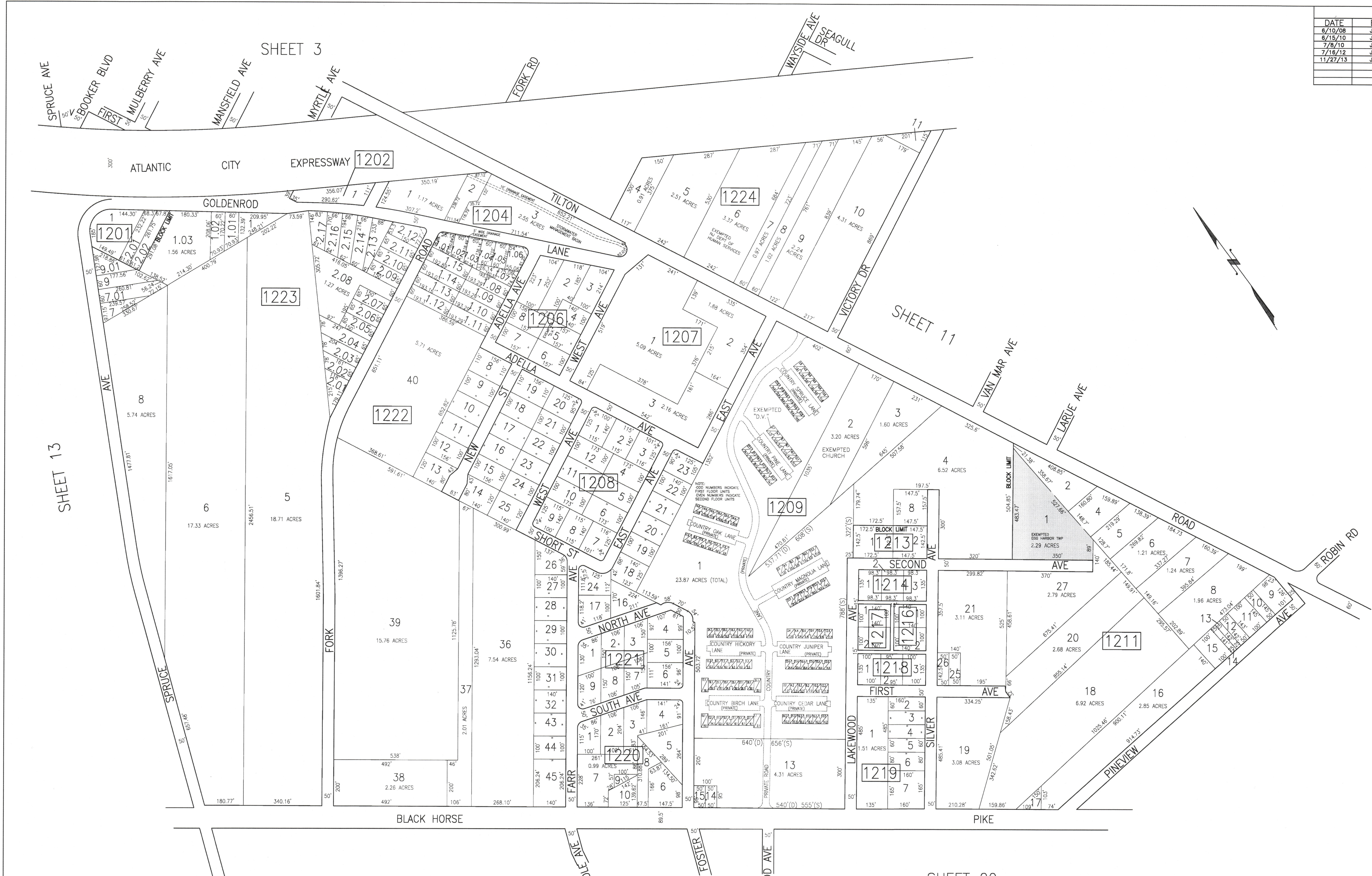


REVISIONS			
DATE	BY	LIC. NO.	COMMENTS
6/10/08	JAM	29918	
6/15/10	JAM	29918	
7/9/10	JAM	29918	
7/16/12	JAM	29918	
11/27/13	JAM	29918	



SHEET 3

SHEET 11

SHEET 13

SHEET 19

SHEET 20

SHADED AREAS INDICATE EGG HARBOR TOWNSHIP EXEMPTED PROPERTY

THIS SHEET HAS BEEN DRAWN USING COMPUTER AIDED DRAFTING/DESIGN (CAD/D).

TAX MAP
 TOWNSHIP OF EGG HARBOR
 ATLANTIC COUNTY, NEW JERSEY
 SCALE: 1"=200'
 JANUARY 2008
 JAMES A. MOTT, PE, PLS
 PROFESSIONAL ENGINEER & LAND SURVEYOR
 NEW JERSEY LICENSE NO. 29918
 3122 FIRE ROAD
 EGG HARBOR TOWNSHIP, NJ 08234