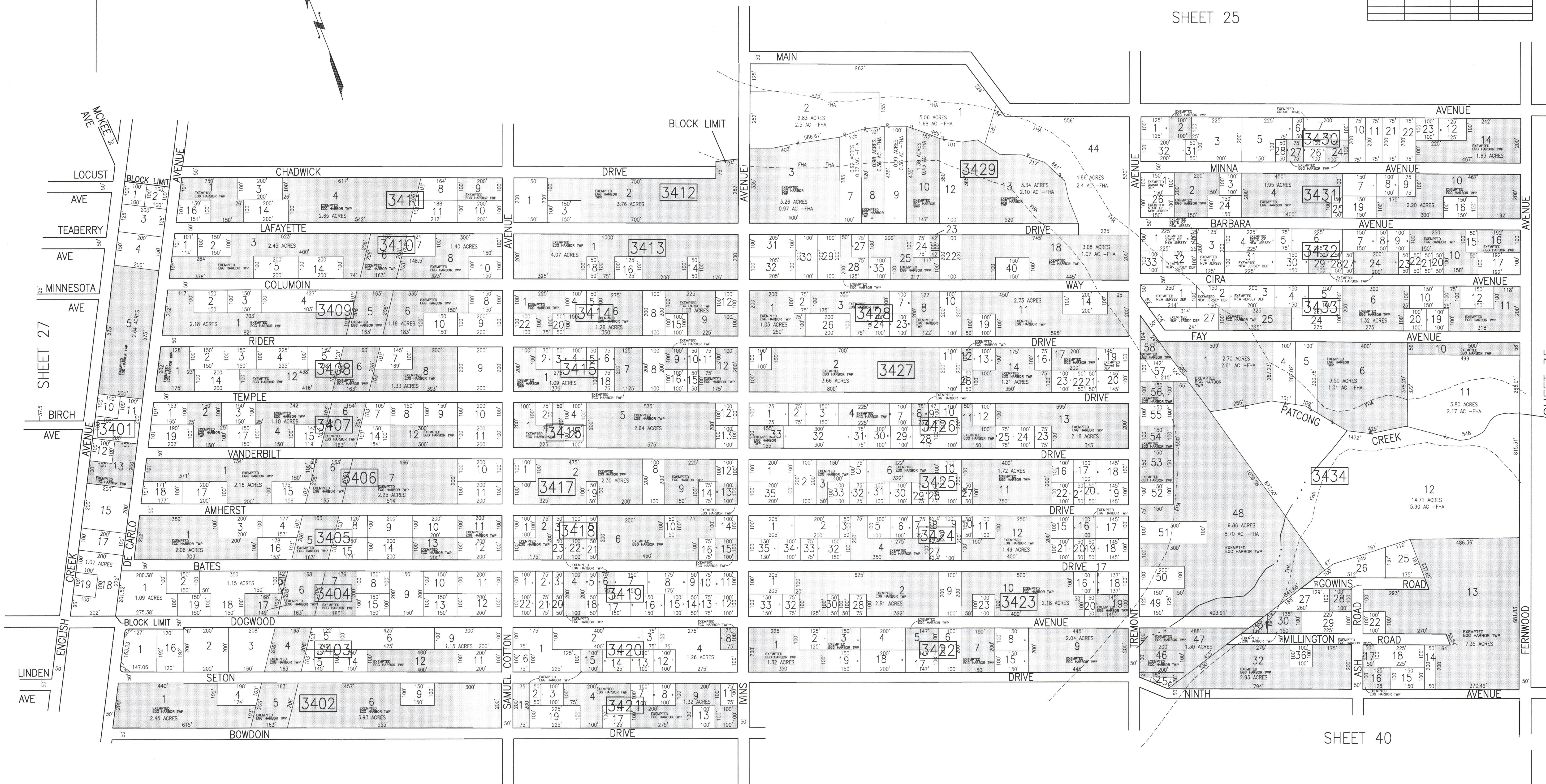
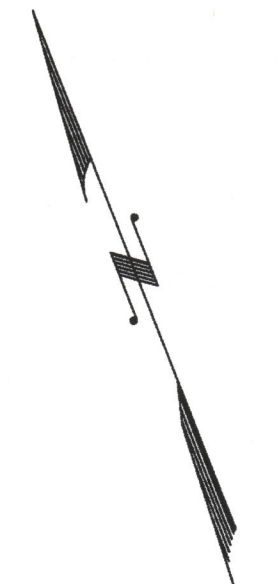


SHEET 26

SHEET 25

REVISIONS			
DATE	BY	LIC. NO.	COMMENTS
11/7/08	JAM	29918	
12/14/09	JAM	29918	
2/17/10	JAM	29918	
4/9/10	JAM	29918	
6/17/10	JAM	29918	
12/16/13	JAM	29918	



SHEET 27

SHEET 35

SHEET 33

SHEET 40

SHADED AREAS INDICATE EGG HARBOR TOWNSHIP EXEMPTED PROPERTY
 THIS SHEET HAS BEEN DRAWN USING COMPUTER AIDED DRAFTING/DESIGN (CAD/D).

TAX MAP
 TOWNSHIP OF EGG HARBOR
 ATLANTIC COUNTY, NEW JERSEY
 SCALE: 1"=200'
 JANUARY 2010
JAMES A. MOTT, PE, PLS
 PROFESSIONAL ENGINEER & LAND SURVEYOR
 NEW JERSEY LICENSE NO. 29918
 3122 FIRE ROAD
 EGG HARBOR TOWNSHIP, NJ 08234