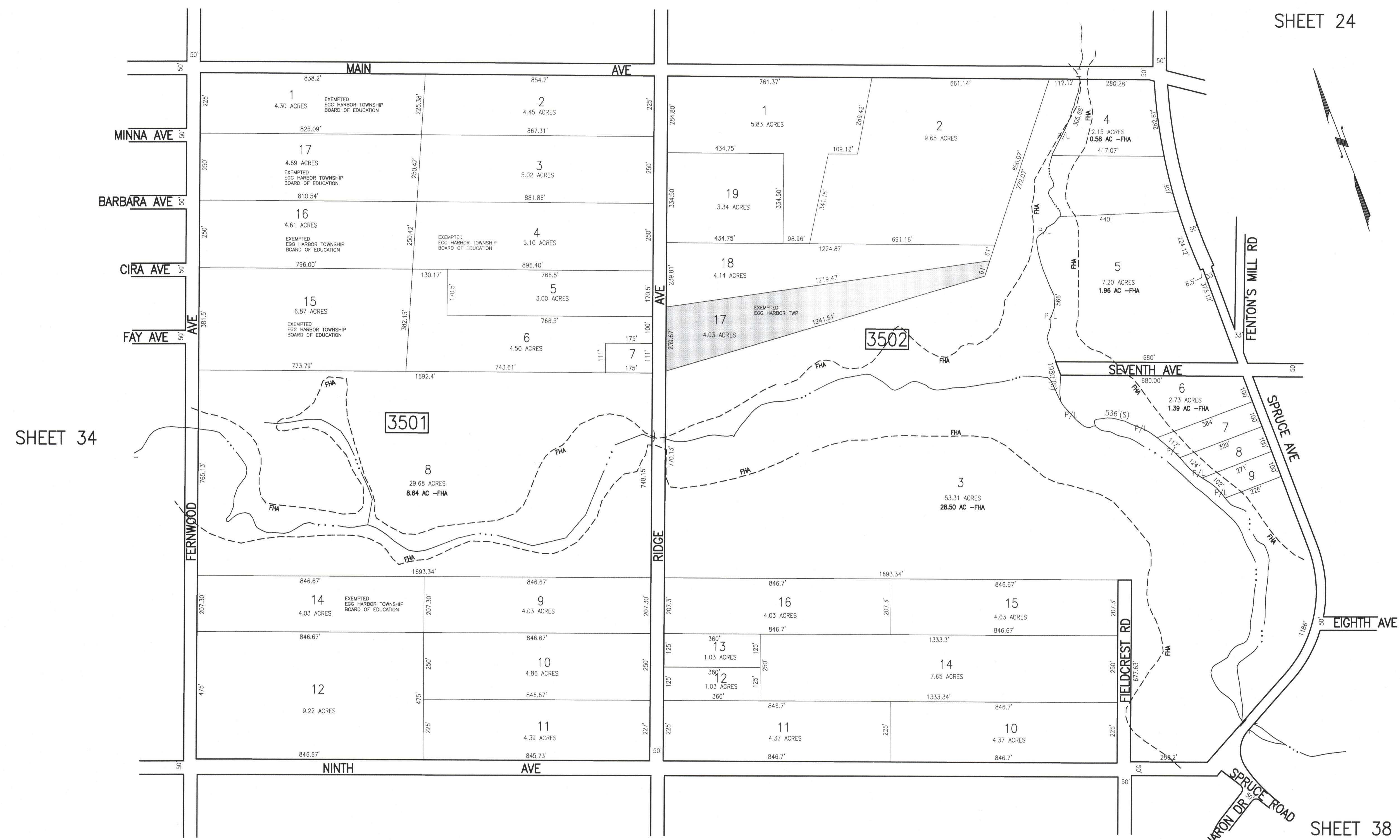


REVISIONS			
DATE	BY	LIC. NO.	COMMENTS
6/17/10	JJM	29918	

SHEET 25

SHEET 24



SHEET 34

SHEET 36

SHEET 40

SHEET 39

SHEET 38


 SHADED AREAS INDICATE EGG HARBOR TOWNSHIP EXEMPTED PROPERTY  
 THIS SHEET HAS BEEN DRAWN USING COMPUTER AIDED DRAFTING/DESIGN (CAD/D).

**TAX MAP**  
 TOWNSHIP OF EGG HARBOR  
 ATLANTIC COUNTY, NEW JERSEY  
 SCALE: 1"=200'  
 JANUARY 2008  
**JAMES A. MOTT, PE, PLS**  
PROFESSIONAL ENGINEER & LAND SURVEYOR  
 NEW JERSEY LICENSE NO. 29918  
 3122 FIRE ROAD  
 EGG HARBOR TOWNSHIP, NJ 08234