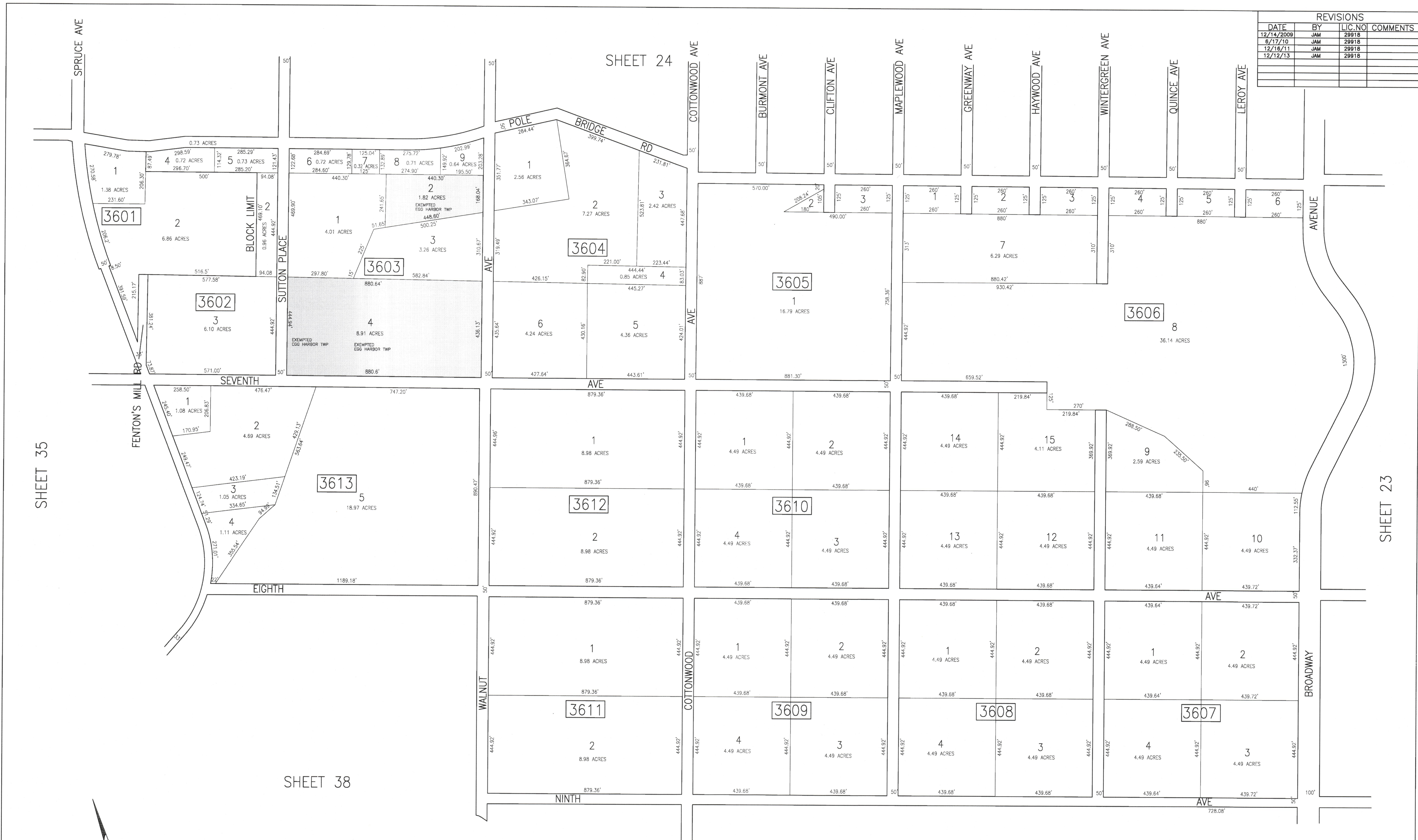


REVISIONS			
DATE	BY	LIC. NO.	COMMENTS
12/14/2009	JAM	29918	
6/17/10	JAM	29918	
12/16/11	JAM	29918	
12/12/13	JAM	29918	



SHEET 35

SHEET 23

SHEET 38

SHEET 37

SHADED AREAS INDICATE  
EGG HARBOR TOWNSHIP  
EXEMPTED PROPERTY

THIS SHEET HAS BEEN DRAWN USING  
COMPUTER AIDED DRAFTING/DESIGN (CAD/D).

TAX MAP  
TOWNSHIP OF EGG HARBOR  
ATLANTIC COUNTY, NEW JERSEY  
SCALE: 1"=200'  
JANUARY 2010  
JAMES A. MOTT, PE, PLS  
PROFESSIONAL ENGINEER & LAND SURVEYOR  
NEW JERSEY LICENSE NO. 29918  
3122 FIRE ROAD  
EGG HARBOR TOWNSHIP, NJ 08234