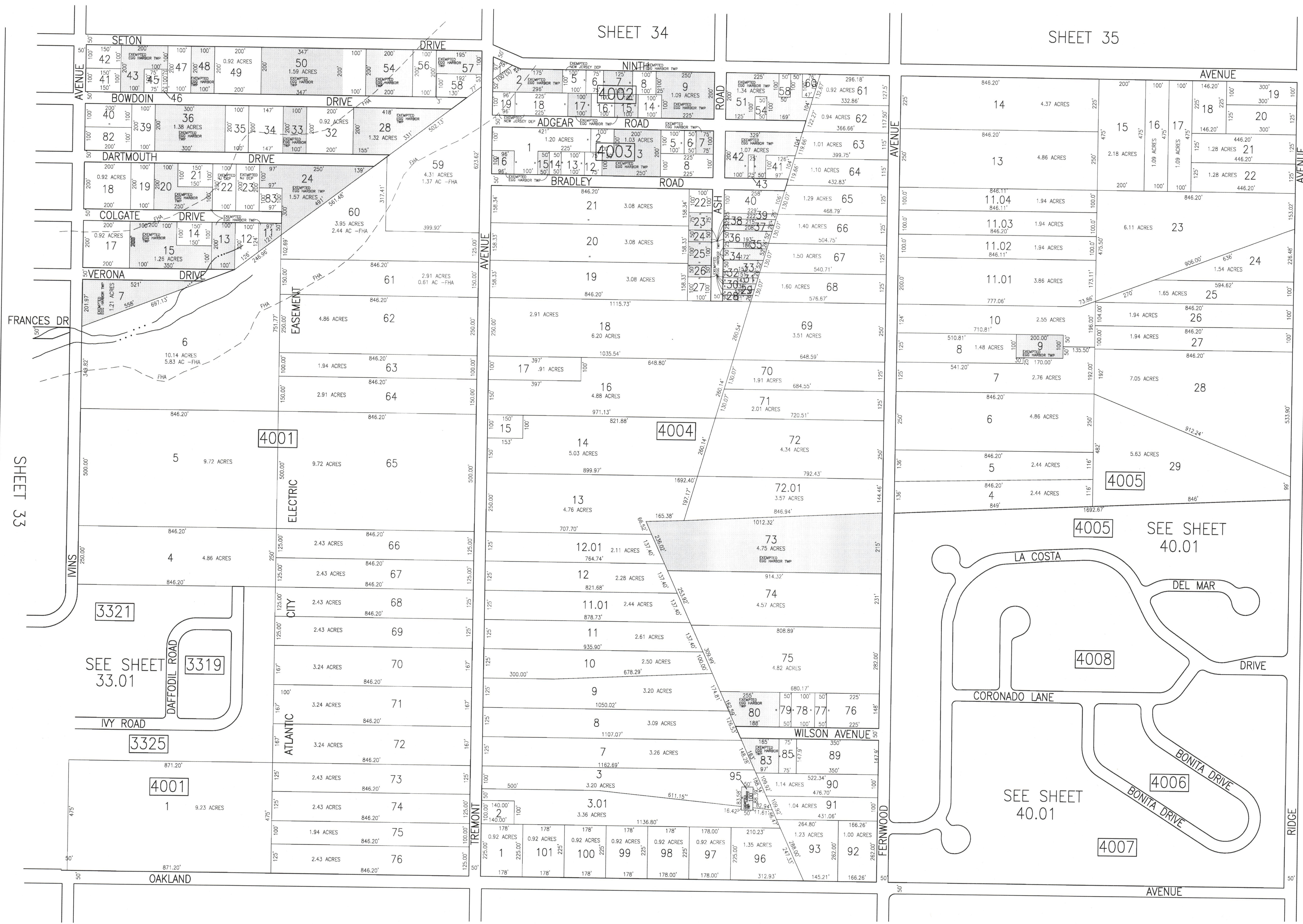


| REVISIONS |     |          |          |
|-----------|-----|----------|----------|
| DATE      | BY  | LIC. NO. | COMMENTS |
| 6/23/10   | JAM | 29918    |          |
| 3/12/12   | JAM | 29918    |          |
| 4/5/12    | JAM | 29918    |          |
| 1/7/13    | JAM | 29918    |          |
| 12/12/13  | JAM | 29918    |          |
| 12/16/13  | JAM | 29918    |          |



SHEET 33

SHEET 34

SHEET 35

SHEET 39

SHEET 41

SHADED AREAS INDICATE  
EGG HARBOR TOWNSHIP  
EXEMPTED PROPERTY

THIS SHEET HAS BEEN DRAWN USING  
COMPUTER AIDED DRAFTING/DESIGN (CAD/D).

TAX MAP  
TOWNSHIP OF EGG HARBOR  
ATLANTIC COUNTY, NEW JERSEY  
SCALE: 1"=200'  
JANUARY 2008  
JAMES A. MOTT, PE, PLS  
PROFESSIONAL ENGINEER & LAND SURVEYOR  
NEW JERSEY LICENSE NO. 29918  
3122 FIRE ROAD  
EGG HARBOR TOWNSHIP, NJ 08234