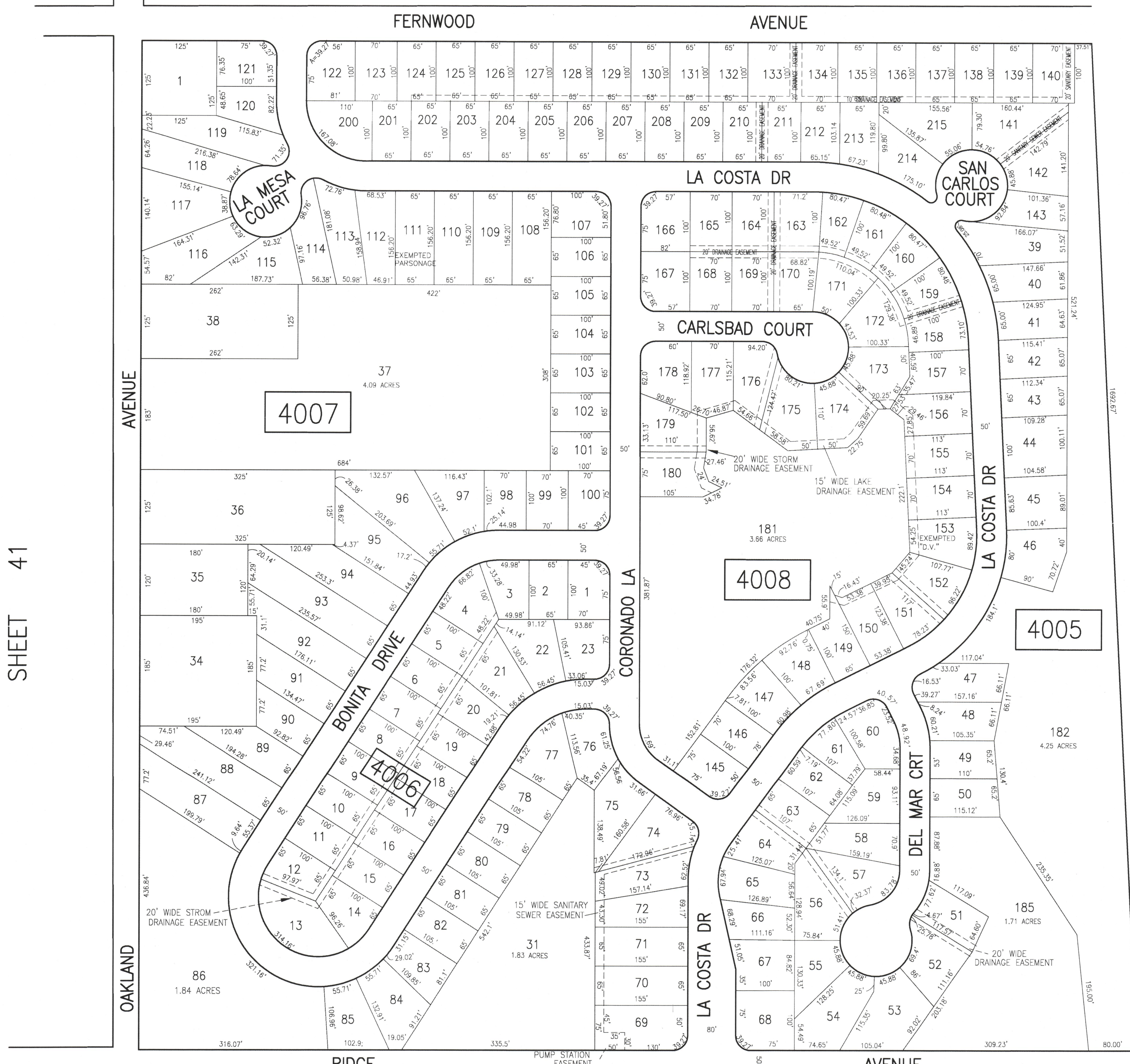
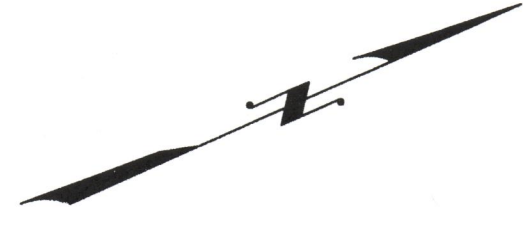


| REVISIONS | | | |
|-----------|-----|----------|----------|
| DATE | BY | LIC. NO. | COMMENTS |
| 6/17/10 | JAM | 29018 | |
| | | | |
| | | | |
| | | | |
| | | | |

SHEET 40



SHEET 41

SHEET 40

SHEET 39

THIS SHEET HAS BEEN DRAWN USING COMPUTER AIDED DRAFTING/DESIGN (CAD/D).

TAX MAP
 TOWNSHIP OF EGG HARBOR
 ATLANTIC COUNTY, NEW JERSEY
 SCALE: 1"=100'
 JANUARY 2008
JAMES A. MOTT, PE, PLS
PROFESSIONAL ENGINEER & LAND SURVEYOR
 NEW JERSEY LICENSE NO. 29018
 3122 FIRE ROAD
 EGG HARBOR TOWNSHIP, NJ 08234