

REVISIONS			
DATE	BY	LIC. NO.	COMMENTS
6/23/10	JAM	29918	

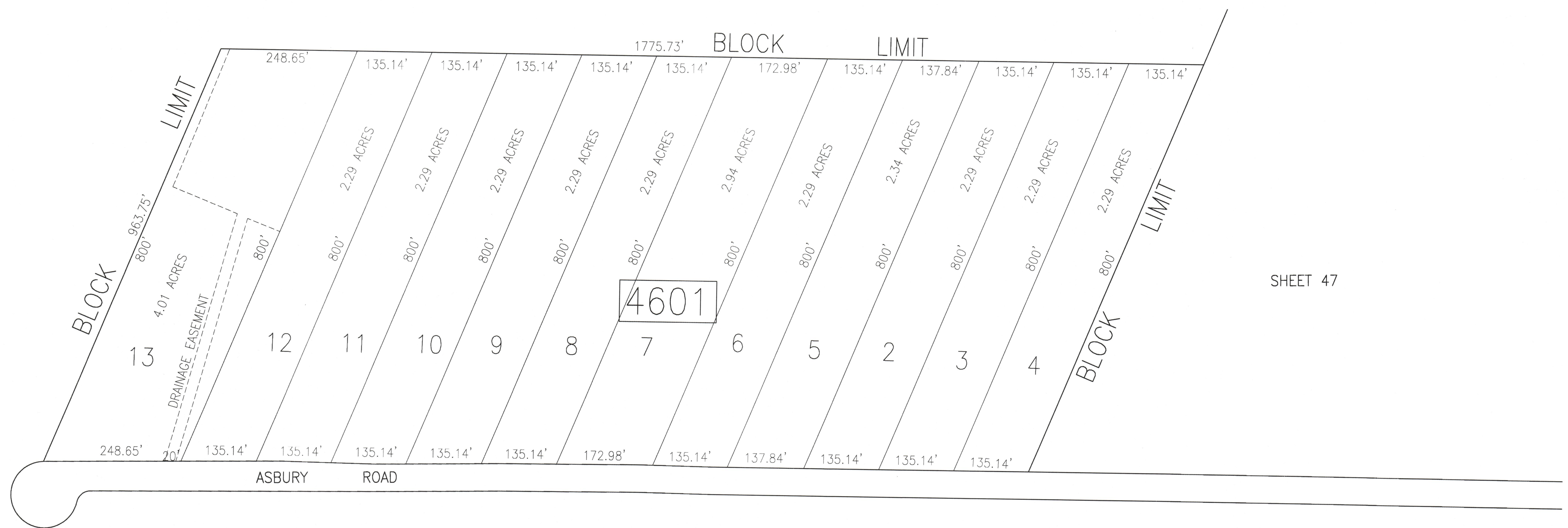


SHEET 45

SHEET 45

SHEET 47

SHEET 48



THIS SHEET HAS BEEN DRAWN USING
COMPUTER AIDED DRAFTING/DESIGN (CAD/D).

TAX MAP
TOWNSHIP OF EGG HARBOR
ATLANTIC COUNTY, NEW JERSEY
SCALE: 1"=100' JANUARY 2008
JAMES A. MOTT, PE, PLS
PROFESSIONAL ENGINEER & LAND SURVEYOR
NEW JERSEY LICENSE NO. 29918
3122 FIRE ROAD
EGG HARBOR TOWNSHIP, NJ 08234