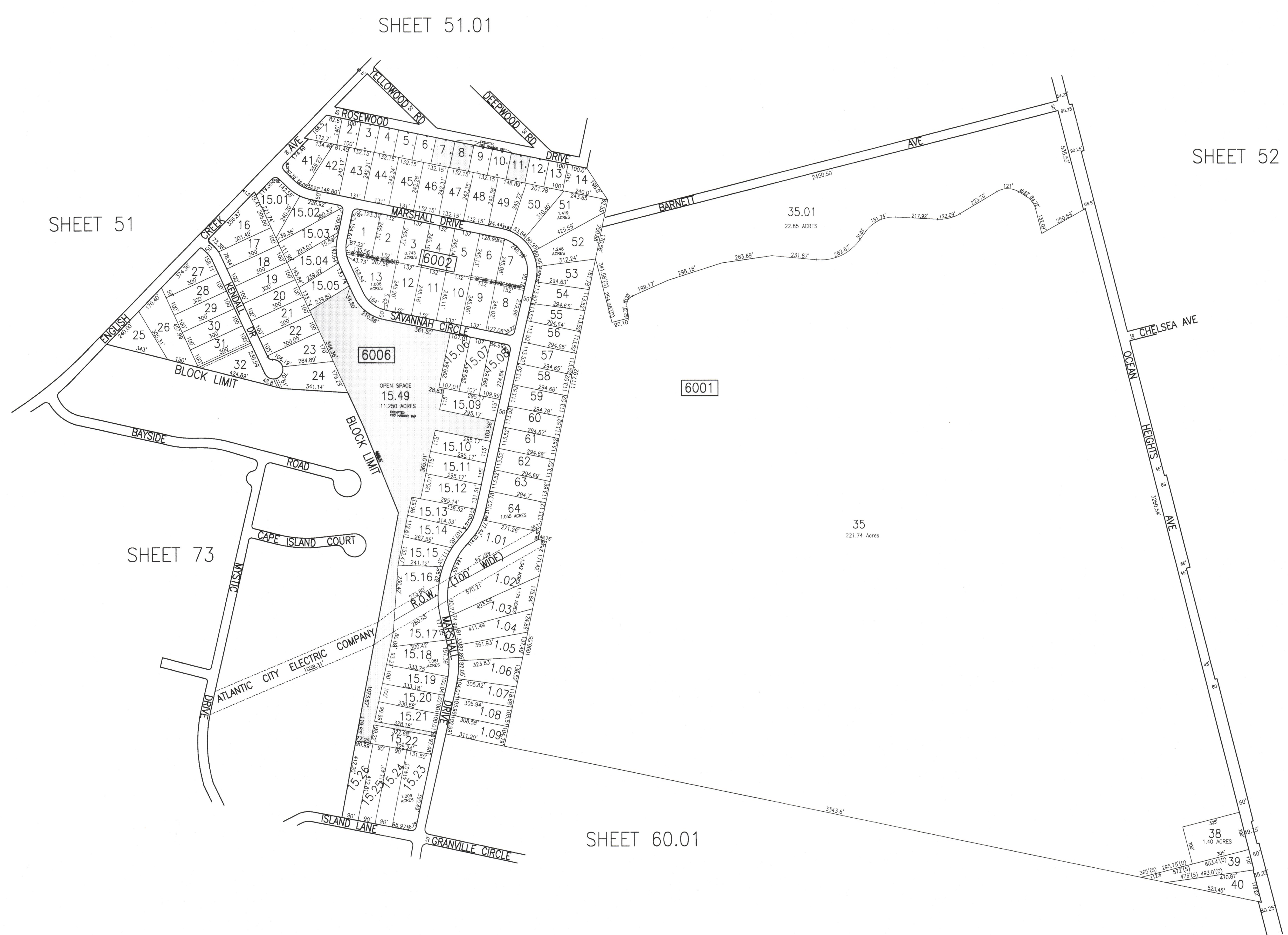


| REVISIONS | | | |
|-----------|-----|----------|----------|
| DATE | BY | LIC. NO. | COMMENTS |
| 6/22/10 | JAM | 2991B | |
| 6/12/13 | JAM | 2991B | |
| 12/16/13 | JAM | 2991B | |
| | | | |
| | | | |
| | | | |



SHADED AREAS INDICATE EGG HARBOR TOWNSHIP EXEMPTED PROPERTY
 THIS SHEET HAS BEEN DRAWN USING COMPUTER AIDED DRAFTING/DESIGN (CAD/D).

TAX MAP
TOWNSHIP OF EGG HARBOR
 ATLANTIC COUNTY, NEW JERSEY
 SCALE: 1"=300' JANUARY 2008
JAMES A. MOTT, PE, PLS
PROFESSIONAL ENGINEER & LAND SURVEYOR
 NEW JERSEY LICENSE NO. 2991B
 3122 FIRE ROAD
 EGG HARBOR TOWNSHIP, NJ 08234