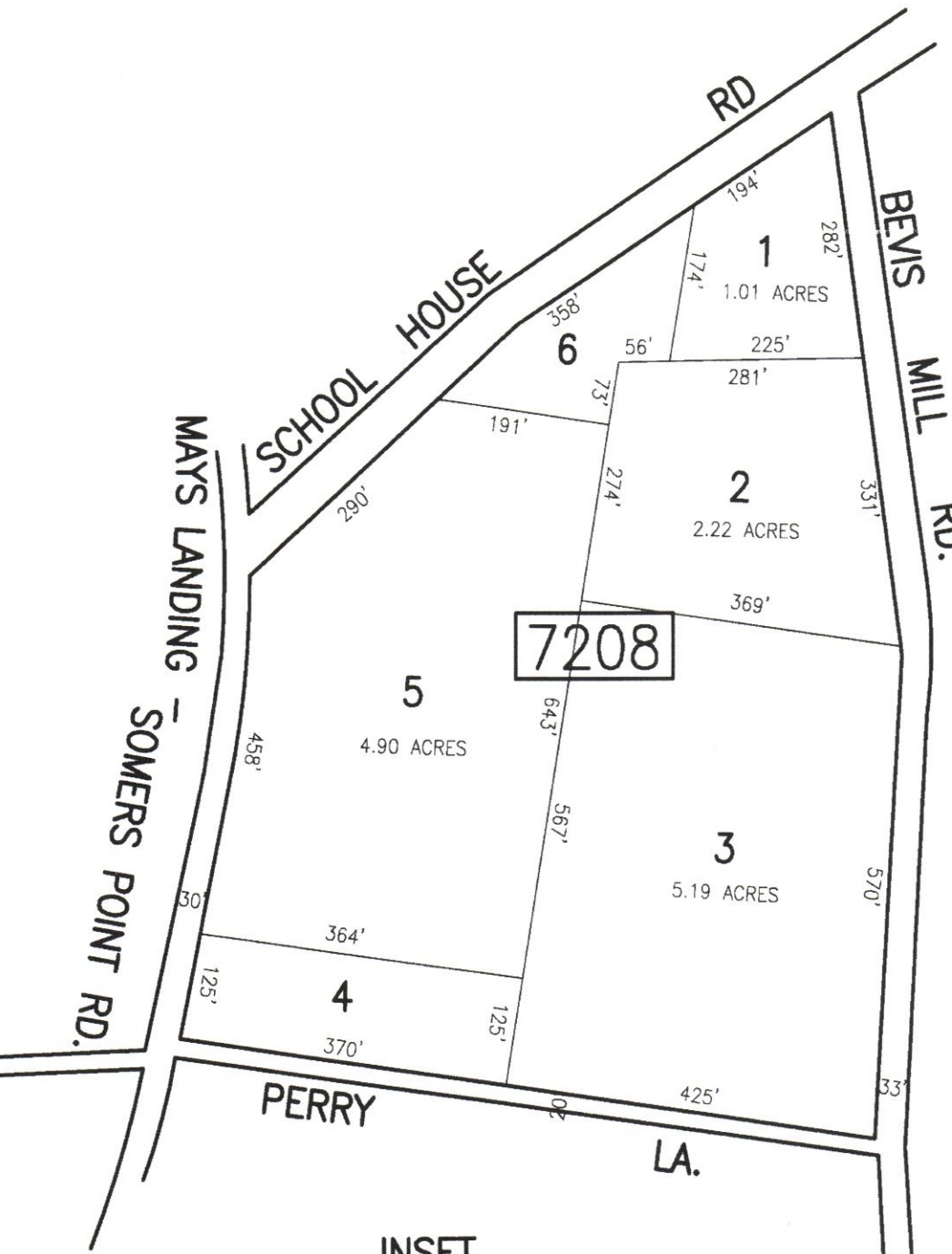


REVISIONS			
DATE	BY	LIC. NO.	COMMENTS
6/17/10	JAM	29918	



INSET
SCALE: 1" = 200'

MAYS LANDING -
SOMERS POINT RD

SEE INSET
ABOVE

SHEET 71.01

SHADED AREAS INDICATE
EGG HARBOR TOWNSHIP
EXEMPTED PROPERTY

THIS SHEET HAS BEEN DRAWN USING
COMPUTER AIDED DRAFTING/DESIGN (CAD/D).

TAX MAP
TOWNSHIP OF EGG HARBOR
ATLANTIC COUNTY, NEW JERSEY
SCALE: 1"=200' JANUARY 2008
JAMES A. MOTT, PE, PLS
PROFESSIONAL ENGINEER & LAND SURVEYOR
NEW JERSEY LICENSE NO. 29918
3122 FIRE ROAD
EGG HARBOR TOWNSHIP, NJ 08234