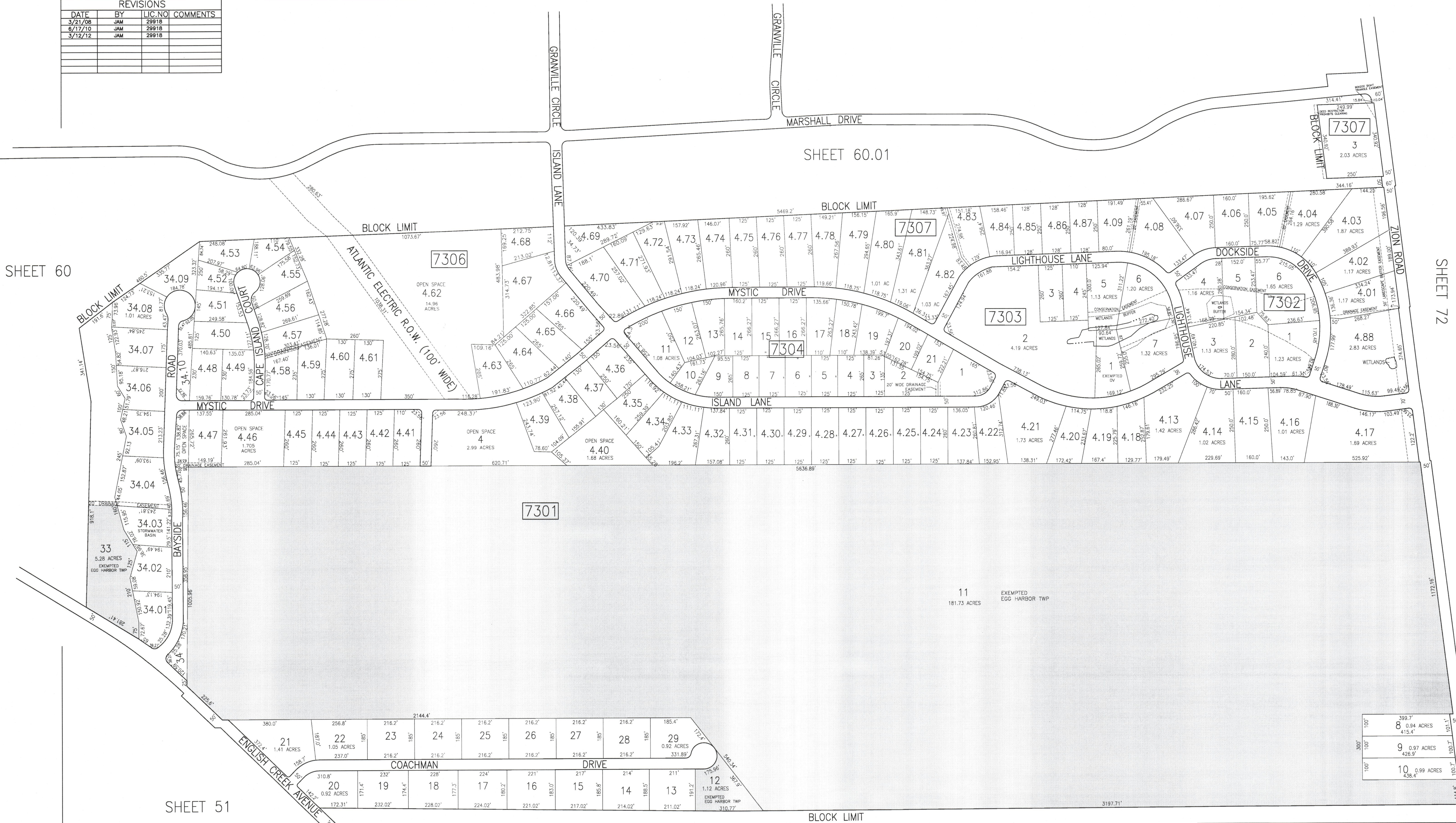


| REVISIONS | | | |
|-----------|-----|----------|----------|
| DATE | BY | LIC. NO. | COMMENTS |
| 3/21/08 | JAM | 29918 | |
| 6/17/10 | JAM | 29918 | |
| 3/12/12 | JAM | 29918 | |
| | | | |
| | | | |
| | | | |



SHEET 60

SHEET 72

SHEET 51

SHEET 75

TAX MAP
 TOWNSHIP OF EGG HARBOR
 ATLANTIC COUNTY, NEW JERSEY
 SCALE: 1"=200' JANUARY 2008
 JAMES A. MOTT, PE, PLS
 PROFESSIONAL ENGINEER & LAND SURVEYOR
 NEW JERSEY LICENSE NO. 29918
 3122 FIRE ROAD
 EGG HARBOR TOWNSHIP, NJ 08234

SHADED AREAS INDICATE EXEMPTED PROPERTY
 THIS SHEET HAS BEEN DRAWN USING COMPUTER AIDED DRAFTING/DESIGN (CAD/D).