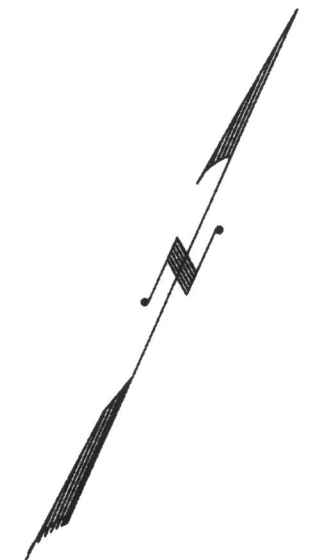


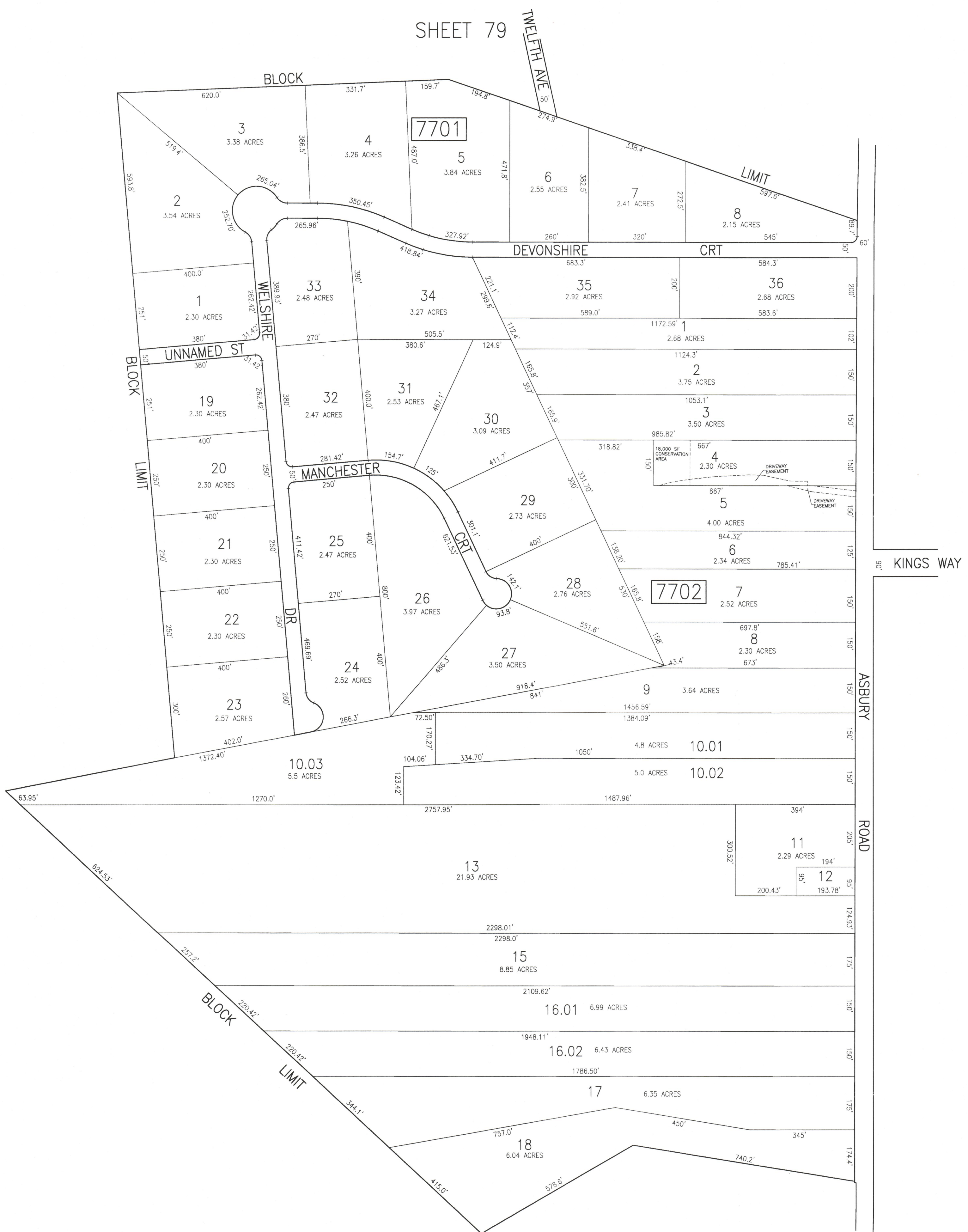
REVISIONS			
DATE	BY	LIC. NO.	COMMENTS
6/17/10	JAM	2991B	
1/25/12	JAM	2991B	
12/5/12	JAM	2991B	



SHEET 79

SHEET 78

SHEET 51



SHEET 78

THIS SHEET HAS BEEN DRAWN USING COMPUTER AIDED DRAFTING/DESIGN (CAD/D).

TAX MAP
 TOWNSHIP OF EGG HARBOR
 ATLANTIC COUNTY, NEW JERSEY
 SCALE: 1"=200' JANUARY 2008
 JAMES A. MOTT, PE, PLS
 PROFESSIONAL ENGINEER & LAND SURVEYOR
 NEW JERSEY LICENSE NO. 2991B
 3122 FIRE ROAD
 EGG HARBOR TOWNSHIP, NJ 08234