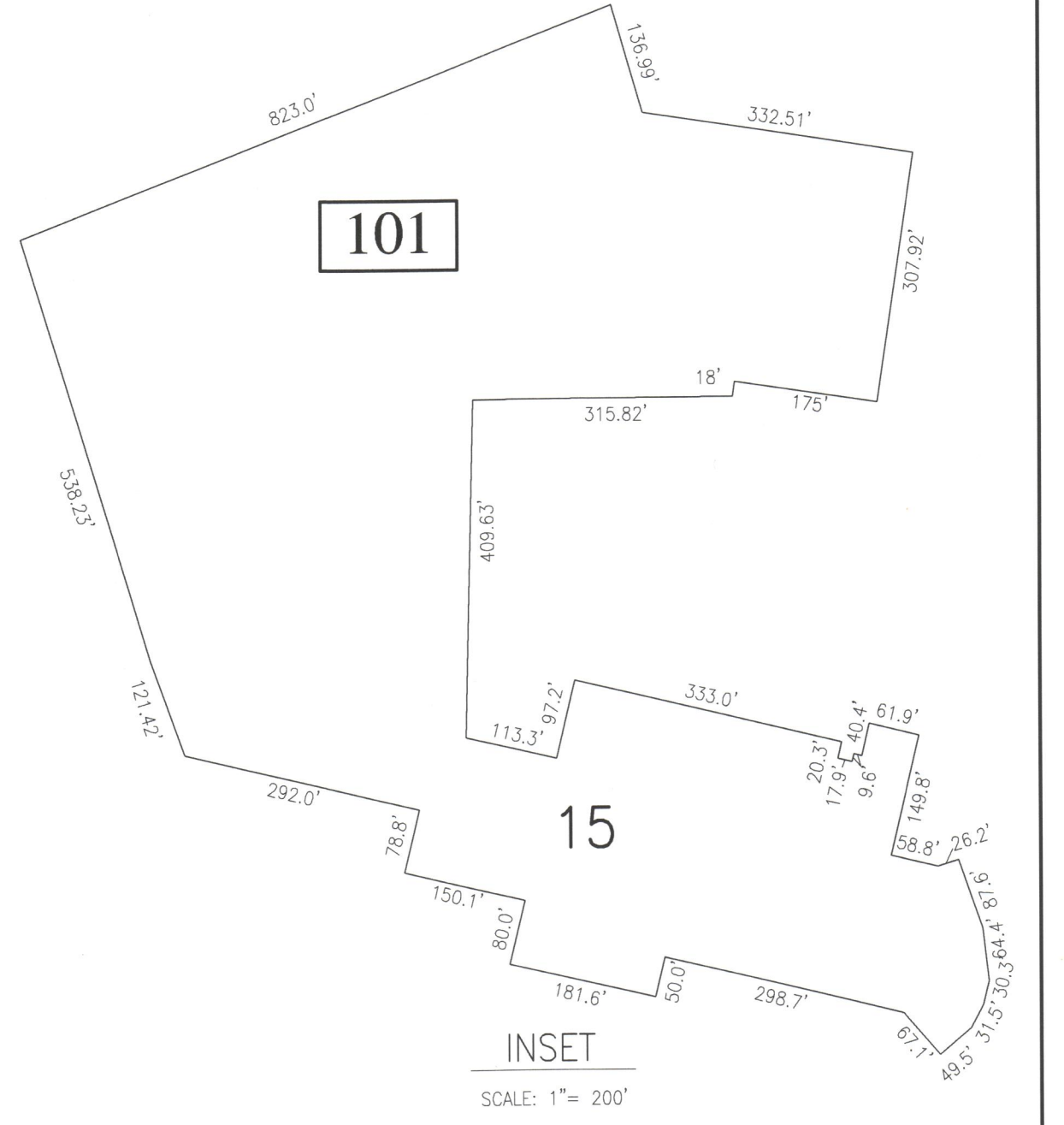
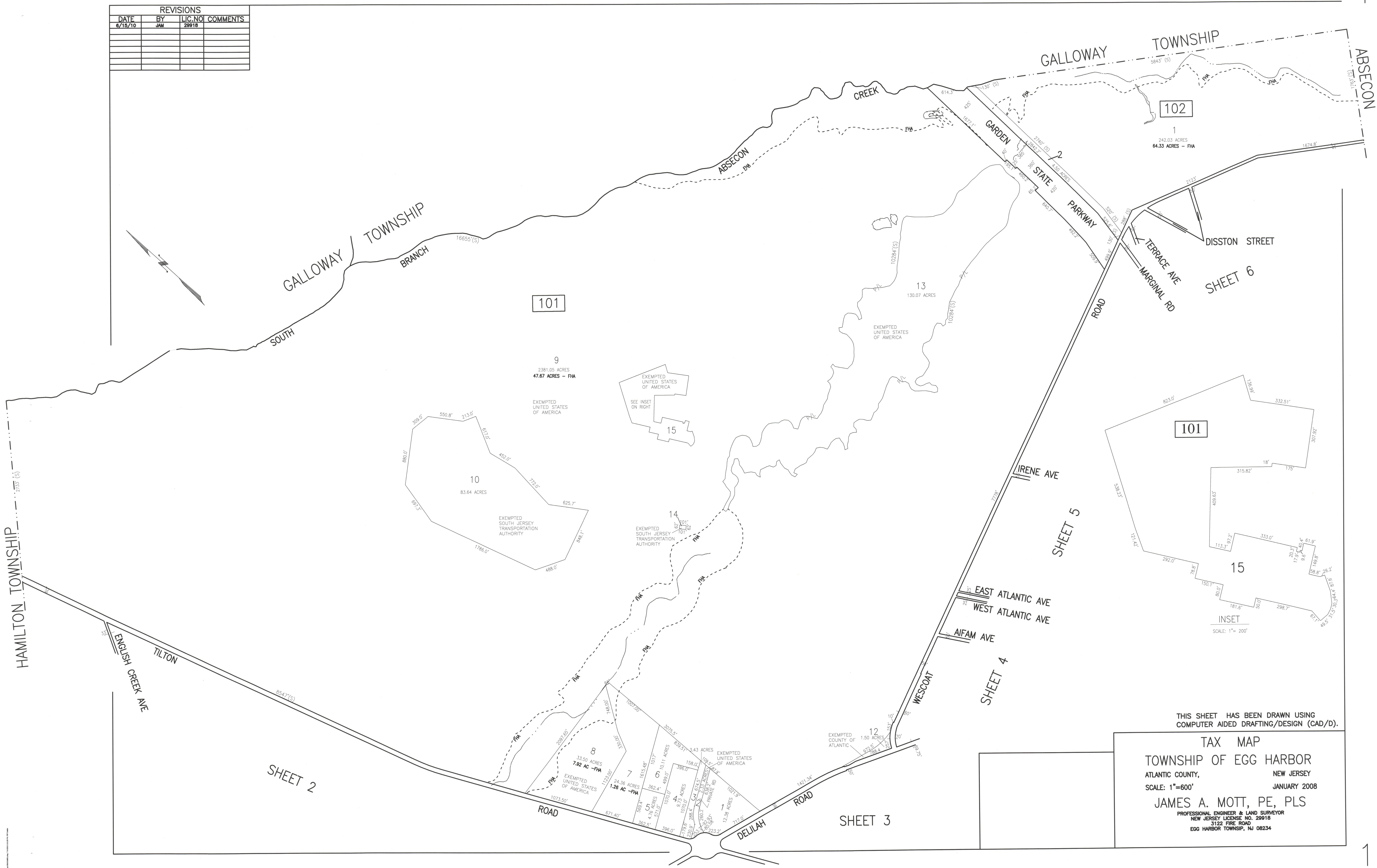


REVISIONS			
DATE	BY	LIC. NO.	COMMENTS
6/15/10	JAM	29918	



THIS SHEET HAS BEEN DRAWN USING  
COMPUTER AIDED DRAFTING/DESIGN (CAD/D).

**TAX MAP**  
**TOWNSHIP OF EGG HARBOR**  
 ATLANTIC COUNTY, NEW JERSEY  
 SCALE: 1"=600' JANUARY 2008

**JAMES A. MOTT, PE, PLS**  
 PROFESSIONAL ENGINEER & LAND SURVEYOR  
 NEW JERSEY LICENSE NO. 29918  
 3122 FIRE ROAD  
 EGG HARBOR TOWNSHIP, NJ 08234

SHEET 2

SHEET 3

SHEET 5

SHEET 4

SHEET 6