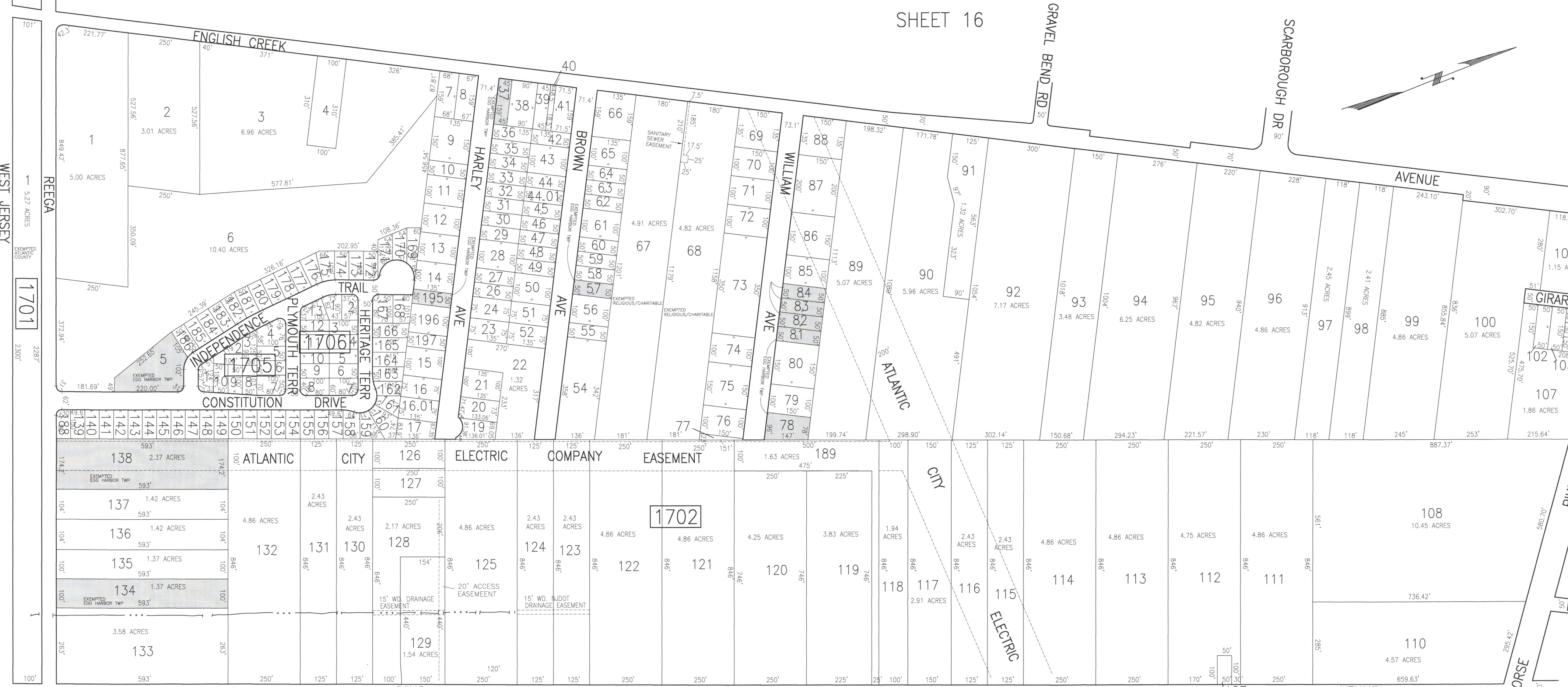


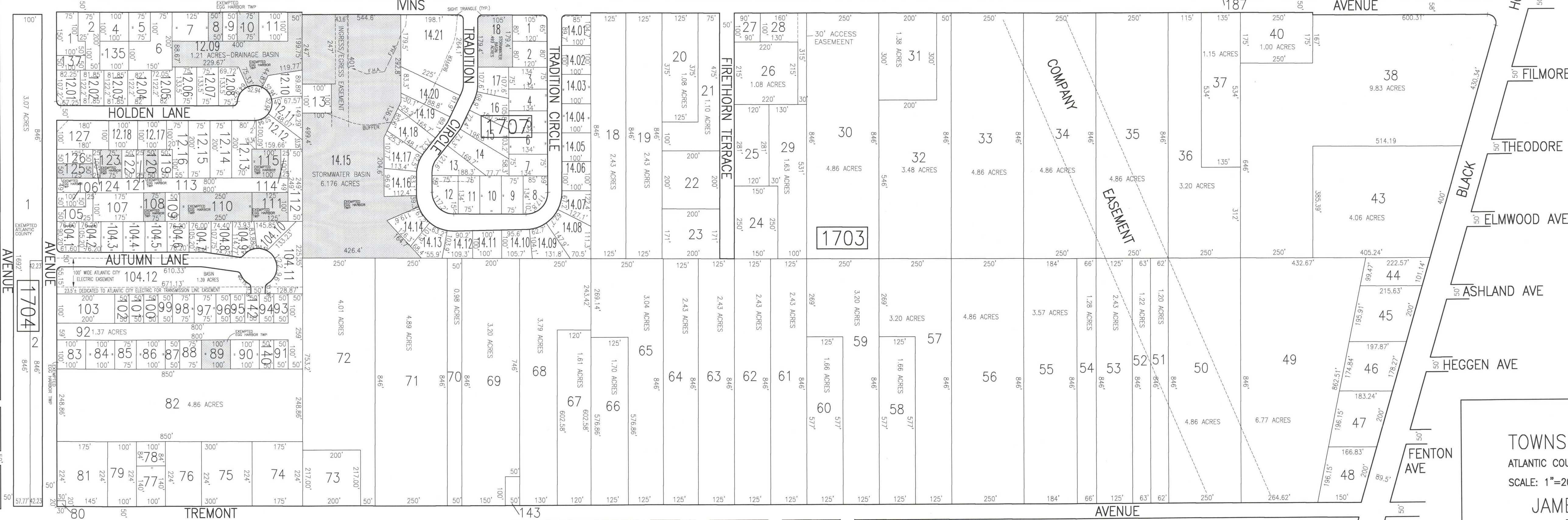
SHEET 16

REVISIONS			
DATE	BY	LIC. NO.	COMMENTS
6/11/08	JAM	29918	
7/19/08	JAM	29918	
12/23/08	JAM	29918	
9/11/09	JAM	29918	
6/18/10	JAM	29918	
11/30/10	JAM	29918	
10/6/11	JAM	29918	
12/16/13	JAM	29918	
REVISIONS			
DATE	BY	LIC. NO.	COMMENTS
1/2/15	JAM	29918	



SHEET 26

SHEET 14



SHEET 18

TAX MAP  
 TOWNSHIP OF EGG HARBOR  
 ATLANTIC COUNTY, NEW JERSEY  
 SCALE: 1"=200'  
 JANUARY 2010  
 JAMES A. MOTT, PE, PLS  
 PROFESSIONAL ENGINEER & LAND SURVEYOR  
 NEW JERSEY LICENSE NO. 29918  
 3122 FIRE ROAD  
 EGG HARBOR TOWNSHIP, NJ 08234

SHADED AREAS INDICATE  
 EGG HARBOR TOWNSHIP  
 EXEMPTED PROPERTY  
 THIS SHEET HAS BEEN DRAWN USING  
 COMPUTER AIDED DRAFTING/DESIGN (CAD/D).