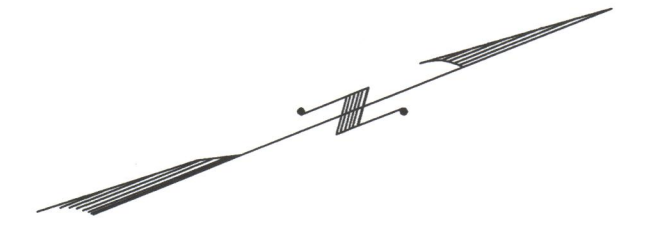
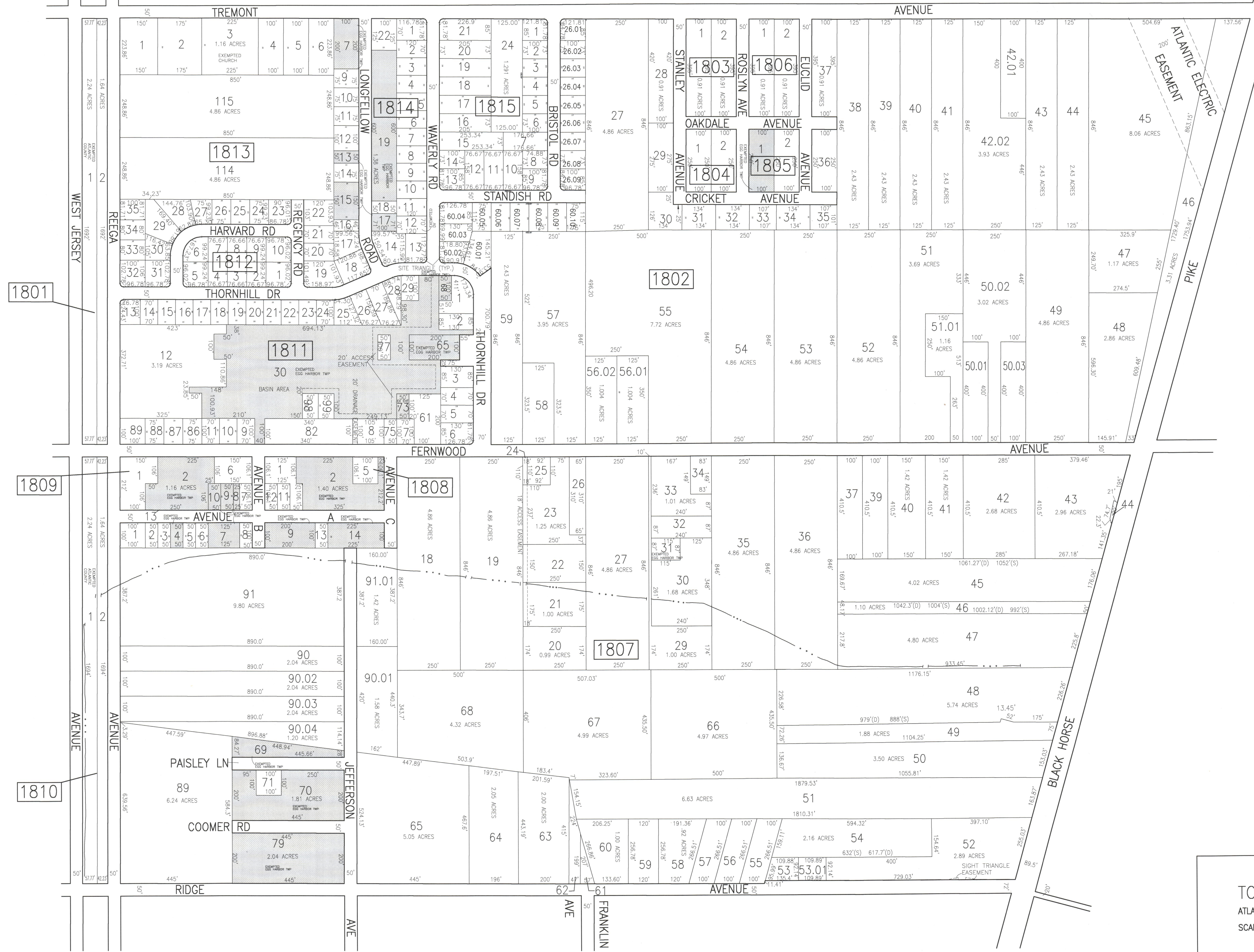


REVISIONS			
DATE	BY	LIC. NO.	COMMENTS
9/15/09	JAM	29918	
6/16/10	JAM	29918	
3/12/12	JAM	29918	
6/28/12	JAM	29918	
6/12/13	JAM	29918	
12/18/13	JAM	29918	
12/29/14	JAM	29918	
1/2/15	JAM	29918	
REVISIONS			
DATE	BY	LIC. NO.	COMMENTS
1/7/15	JAM	29918	



SHEET 25

SHEET 13



1801

1809

1810

1813

1812

1811

1808

1807

1803

1806

1804

1805

1802

TAX MAP  
 TOWNSHIP OF EGG HARBOR  
 ATLANTIC COUNTY, NEW JERSEY  
 SCALE: 1"=200'  
 JANUARY 2010  
 JAMES A. MOTT, PE, PLS  
 PROFESSIONAL ENGINEER & LAND SURVEYOR  
 NEW JERSEY LICENSE NO. 29918  
 3122 FIRE ROAD  
 EGG HARBOR TOWNSHIP, NJ 08234

SHADED AREAS INDICATE  
 EGG HARBOR TOWNSHIP  
 EXEMPTED PROPERTY