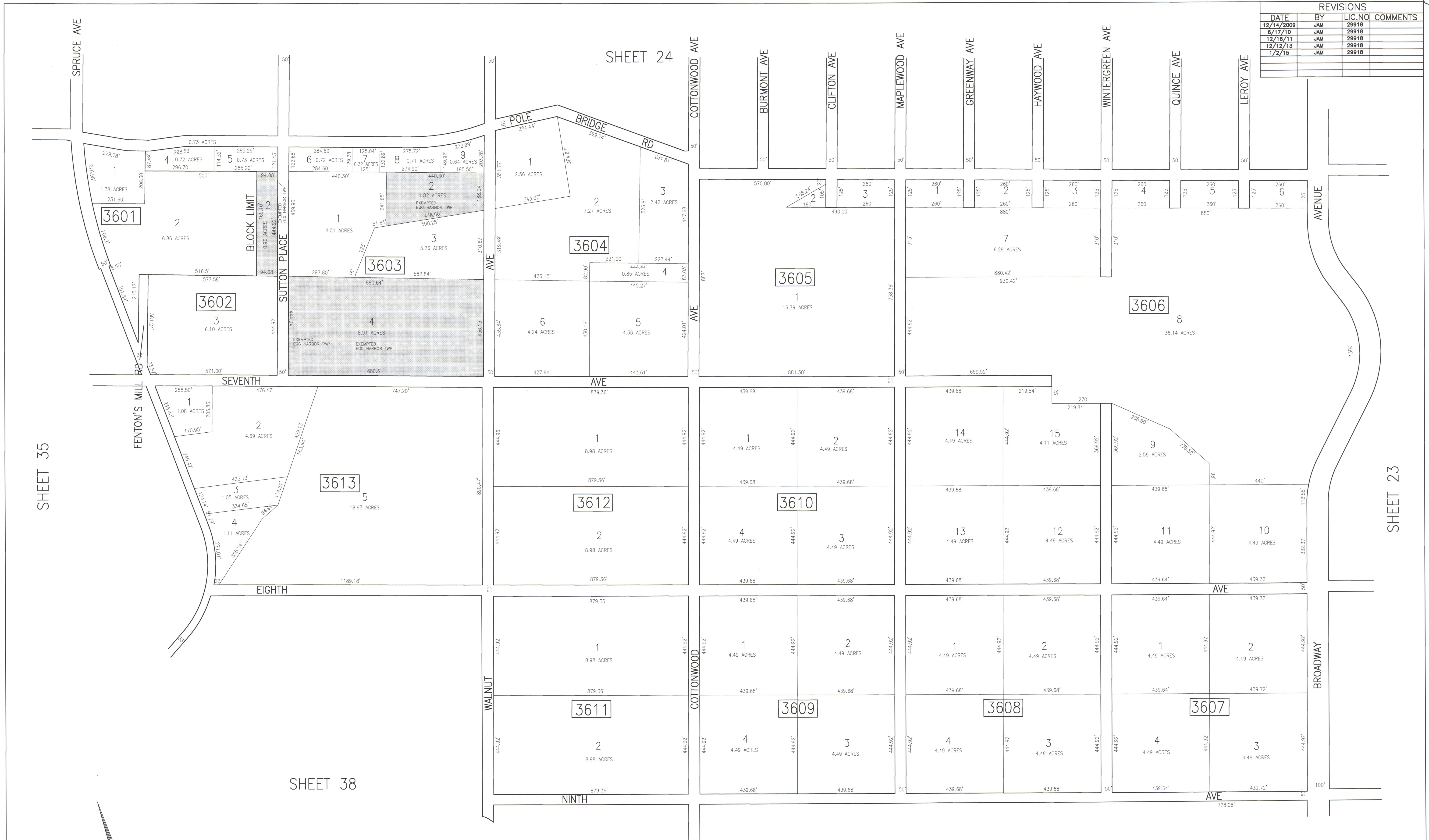


REVISIONS			
DATE	BY	LIC. NO.	COMMENTS
12/14/2009	JAM	29918	
6/17/10	JAM	29918	
12/18/11	JAM	29918	
12/12/13	JAM	29918	
1/2/15	JAM	29918	

SHEET 24



SHEET 35

SHEET 23

SHEET 38

SHEET 37

TAX MAP
 TOWNSHIP OF EGG HARBOR
 ATLANTIC COUNTY, NEW JERSEY
 SCALE: 1"=200'
 JANUARY 2010
 JAMES A. MOTT, PE, PLS
 PROFESSIONAL ENGINEER & LAND SURVEYOR
 NEW JERSEY LICENSE NO. 29918
 3122 FIRE ROAD
 EGG HARBOR TOWNSHIP, NJ 08234

SHADED AREAS INDICATE
 EGG HARBOR TOWNSHIP
 EXEMPTED PROPERTY

THIS SHEET HAS BEEN DRAWN USING
 COMPUTER AIDED DRAFTING/DESIGN (CAD/D).