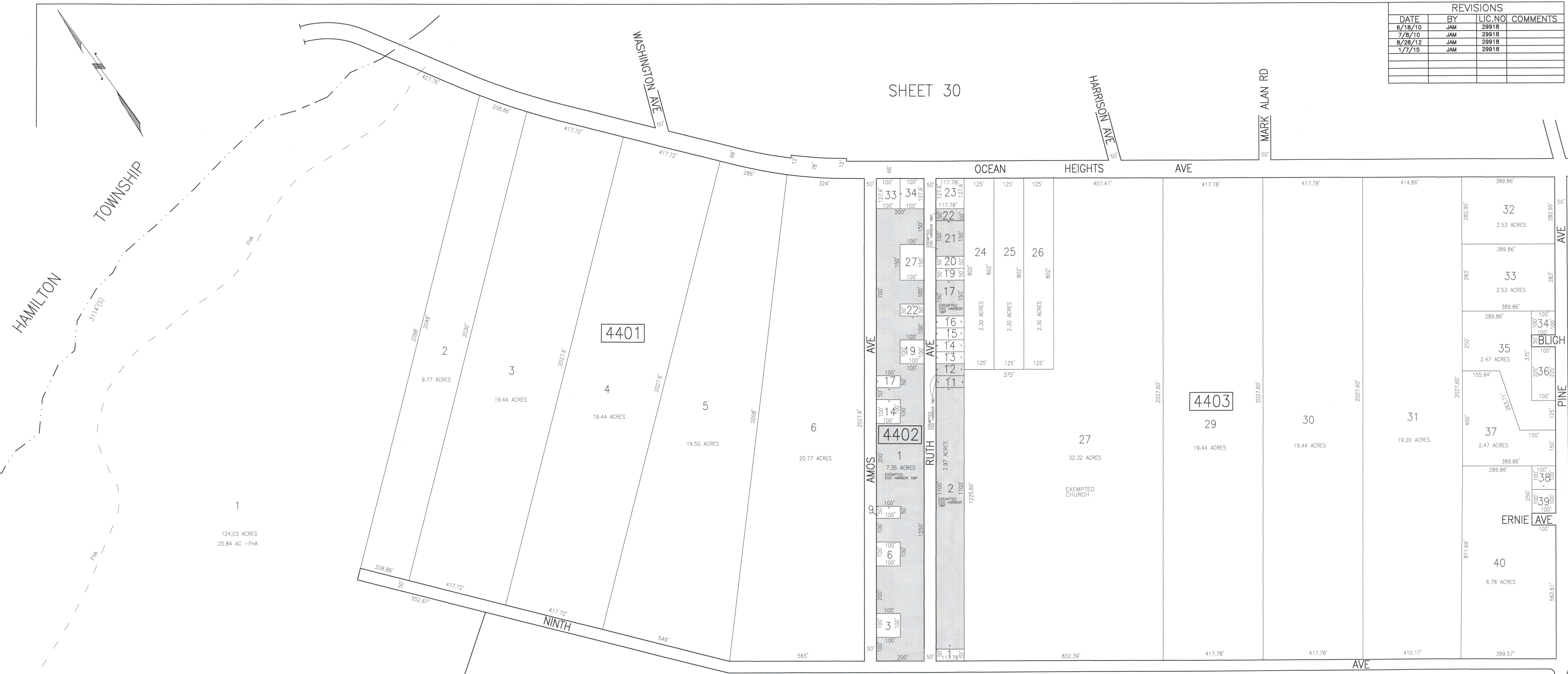


REVISIONS			
DATE	BY	LIC. NO.	COMMENTS
6/18/10	JAM	29918	
7/9/10	JAM	29918	
8/28/12	JAM	29918	
1/7/15	JAM	29918	

SHEET 30



SHEET 45

SHEET 46

SHADED AREAS INDICATE
 EGG HARBOR TOWNSHIP
 EXEMPTED PROPERTY

THIS SHEET HAS BEEN DRAWN USING
 COMPUTER AIDED DRAFTING/DESIGN (CAD/D).

TAX MAP
TOWNSHIP OF EGG HARBOR
 ATLANTIC COUNTY, NEW JERSEY
 SCALE: 1" = 200'
 JANUARY 2008
JAMES A. MOTT, PE, PLS
PROFESSIONAL ENGINEER & LAND SURVEYOR
 NEW JERSEY LICENSE NO. 29918
 3122 FIRE ROAD
 EGG HARBOR TOWNSHIP, NJ 08234