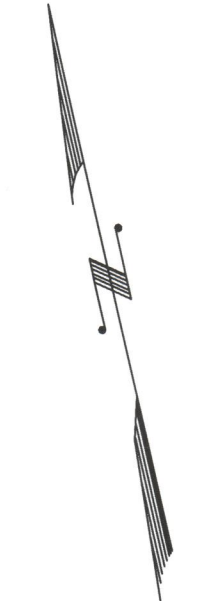


REVISIONS			
DATE	BY	LIC. NO.	COMMENTS
3/23/10	JAM	29918	
6/18/10	JAM	29918	
12/16/13	JAM	29918	



SHEET 56

SHEET 57

SHEET 64

SHEET 62

THIS SHEET HAS BEEN DRAWN USING  
COMPUTER AIDED DRAFTING/DESIGN (CAD/D).

NOTE:  
BLOCK 6303, LOTS 12.01 TO 12.35  
ARE NOT TO SCALE DUE TO A  
SCALING ERROR ON THIS PLATE

SHADED AREAS INDICATE  
EGG HARBOR TOWNSHIP  
EXEMPTED PROPERTY

TAX MAP  
 TOWNSHIP OF EGG HARBOR  
 ATLANTIC COUNTY, NEW JERSEY  
 SCALE: 1"=200'  
 JANUARY 2008  
 JAMES A. MOTT, PE, PLS  
 PROFESSIONAL ENGINEER & LAND SURVEYOR  
 NEW JERSEY LICENSE NO. 29918  
 3122 FIRE ROAD  
 EGG HARBOR TOWNSHIP, NJ 08234

