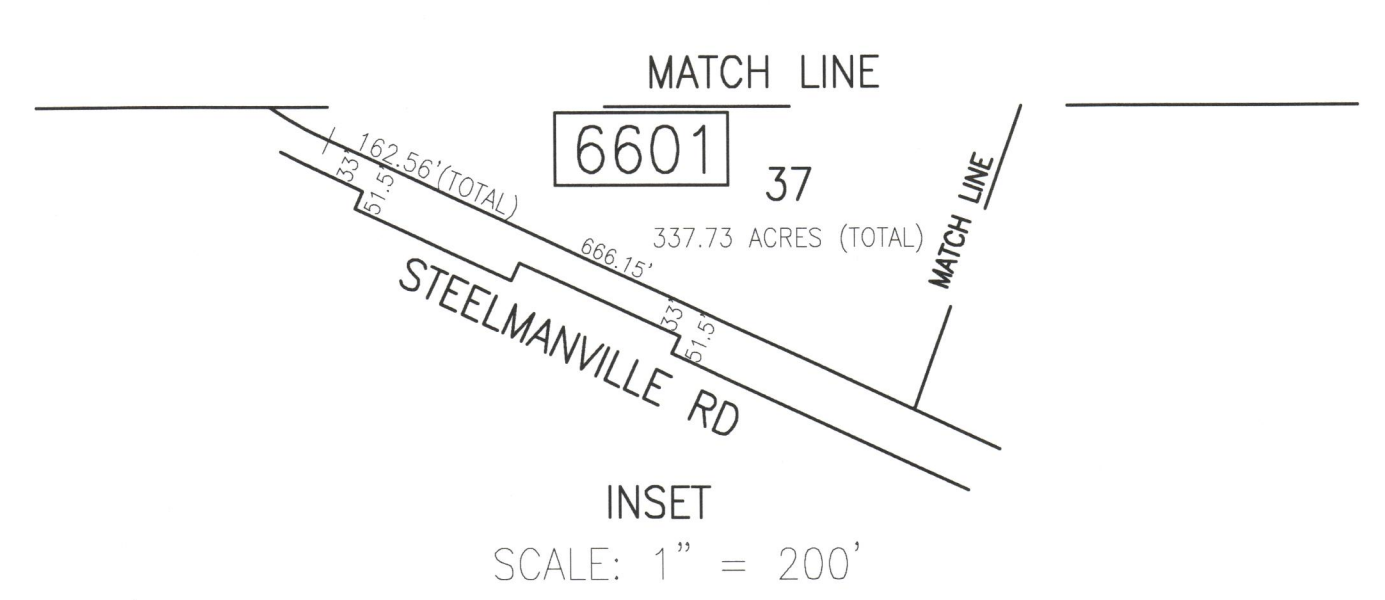


SHEET 69

REVISIONS			
DATE	BY	LIC. NO.	COMMENTS
6/21/10	JAM	29918	
12/26/14	JAM	29918	

THIS SHEET HAS BEEN DRAWN USING COMPUTER AIDED DRAFTING/DESIGN (CAD/D).



INSET SCALE: 1" = 200'

TAX MAP  
TOWNSHIP OF EGG HARBOR  
ATLANTIC COUNTY, NEW JERSEY  
SCALE: 1"=200' JANUARY 2008  
JAMES A. MOTT, PE, PLS  
PROFESSIONAL ENGINEER & LAND SURVEYOR  
NEW JERSEY LICENSE NO. 29918  
3122 FIRE ROAD  
EGG HARBOR TOWNSHIP, NJ 08234

SHADED AREAS INDICATE EGG HARBOR TOWNSHIP EXEMPTED PROPERTY

MATCH LINE (SEE INSET)