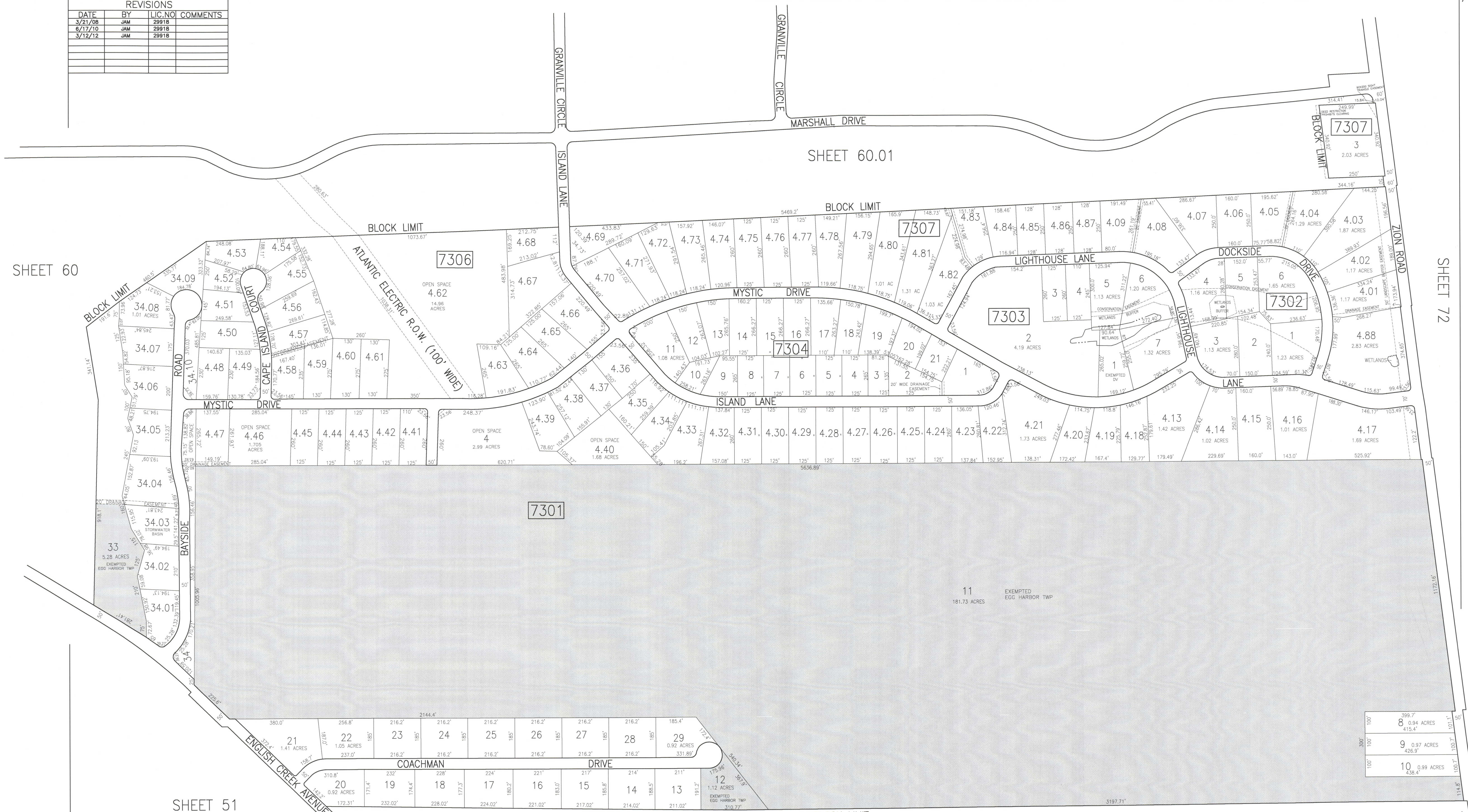


REVISIONS			
DATE	BY	LIC. NO.	COMMENTS
3/21/08	JAM	29918	
6/17/10	JAM	29918	
3/12/12	JAM	29918	



SHEET 60

SHEET 60.01

SHEET 72

SHEET 51

SHEET 75

SHADED AREAS INDICATE EGG HARBOR TOWNSHIP EXEMPTED PROPERTY

THIS SHEET HAS BEEN DRAWN USING COMPUTER AIDED DRAFTING/DESIGN (CAD/D).

TAX MAP
 TOWNSHIP OF EGG HARBOR
 ATLANTIC COUNTY, NEW JERSEY
 SCALE: 1"=200' JANUARY 2008
 JAMES A. MOTT, PE, PLS
 PROFESSIONAL ENGINEER & LAND SURVEYOR
 NEW JERSEY LICENSE NO. 29918
 3122 FIRE ROAD
 EGG HARBOR TOWNSHIP, NJ 08234

8	0.94 ACRES	399.7'
9	0.97 ACRES	415.4'
10	0.99 ACRES	426.9'
11	1.01 ACRES	438.4'