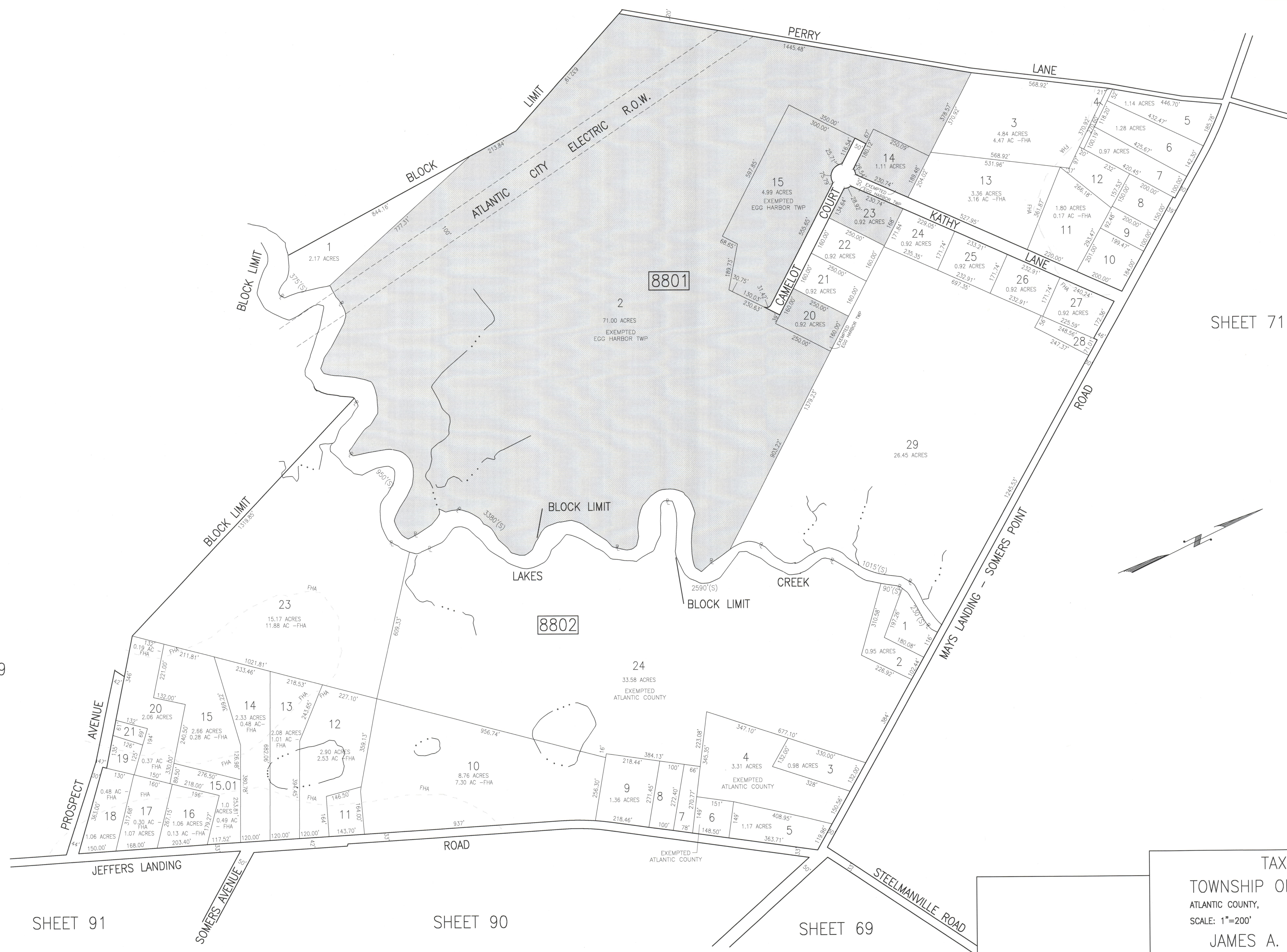


THIS SHEET HAS BEEN DRAWN USING COMPUTER AIDED DRAFTING/DESIGN (CAD/D).

REVISIONS			
DATE	BY	LIC. NO.	COMMENTS
6/17/10	JAM	29918	
7/9/10	JAM	29918	
1/5/12	JAM	29918	

SHEET 87



SHEET 89

SHEET 71

SHEET 91

SHEET 90

SHEET 69

TAX MAP
 TOWNSHIP OF EGG HARBOR
 ATLANTIC COUNTY, NEW JERSEY
 SCALE: 1"=200' JANUARY 2008
JAMES A. MOTT, PE, PLS
 PROFESSIONAL ENGINEER & LAND SURVEYOR
 NEW JERSEY LICENSE NO. 29918
 3122 FIRE ROAD
 EGG HARBOR TOWNSHIP, NJ 08234