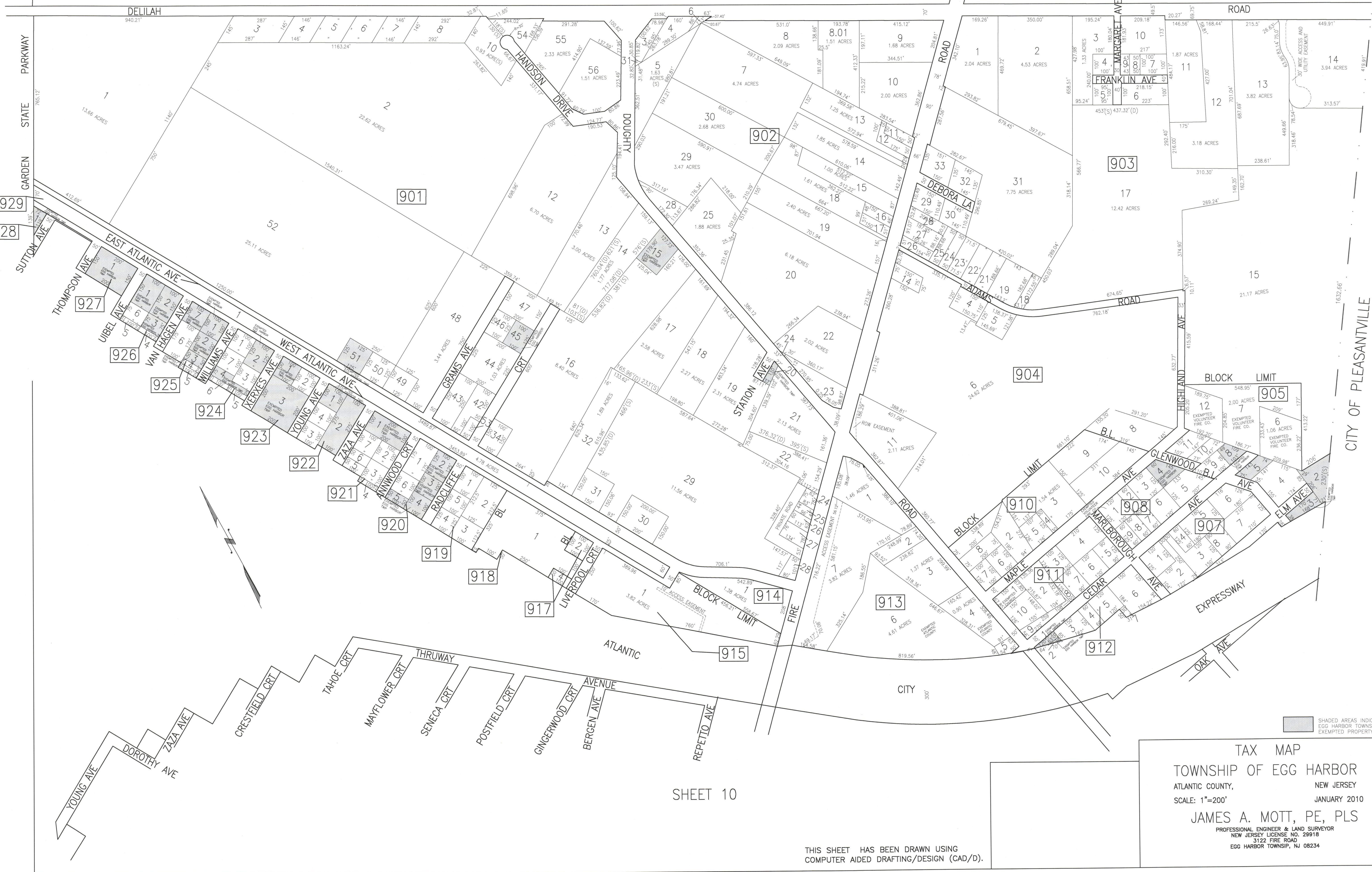


REVISIONS				REVISIONS			
DATE	BY	LIC. NO.	COMMENTS	DATE	BY	LIC. NO.	COMMENTS
6/10/08	JAM	29918		1/7/12	JAM	29918	
11/7/08	JAM	29918		11/12/13	JAM	29918	
9/16/09	JAM	29918		12/16/13	JAM	29918	
6/16/10	JAM	29918		1/2/15	JAM	29918	
1/13/11	JAM	29918					
6/2/11	JAM	29918					

SHEET 7

SHEET 8

SHEET 4



SHEET 10

TAX MAP
 TOWNSHIP OF EGG HARBOR
 ATLANTIC COUNTY, NEW JERSEY
 SCALE: 1"=200'
 JANUARY 2010
 JAMES A. MOTT, PE, PLS
 PROFESSIONAL ENGINEER & LAND SURVEYOR
 NEW JERSEY LICENSE NO. 29918
 3122 FIRE ROAD
 EGG HARBOR TOWNSHIP, NJ 08234

THIS SHEET HAS BEEN DRAWN USING
 COMPUTER AIDED DRAFTING/DESIGN (CAD/D).