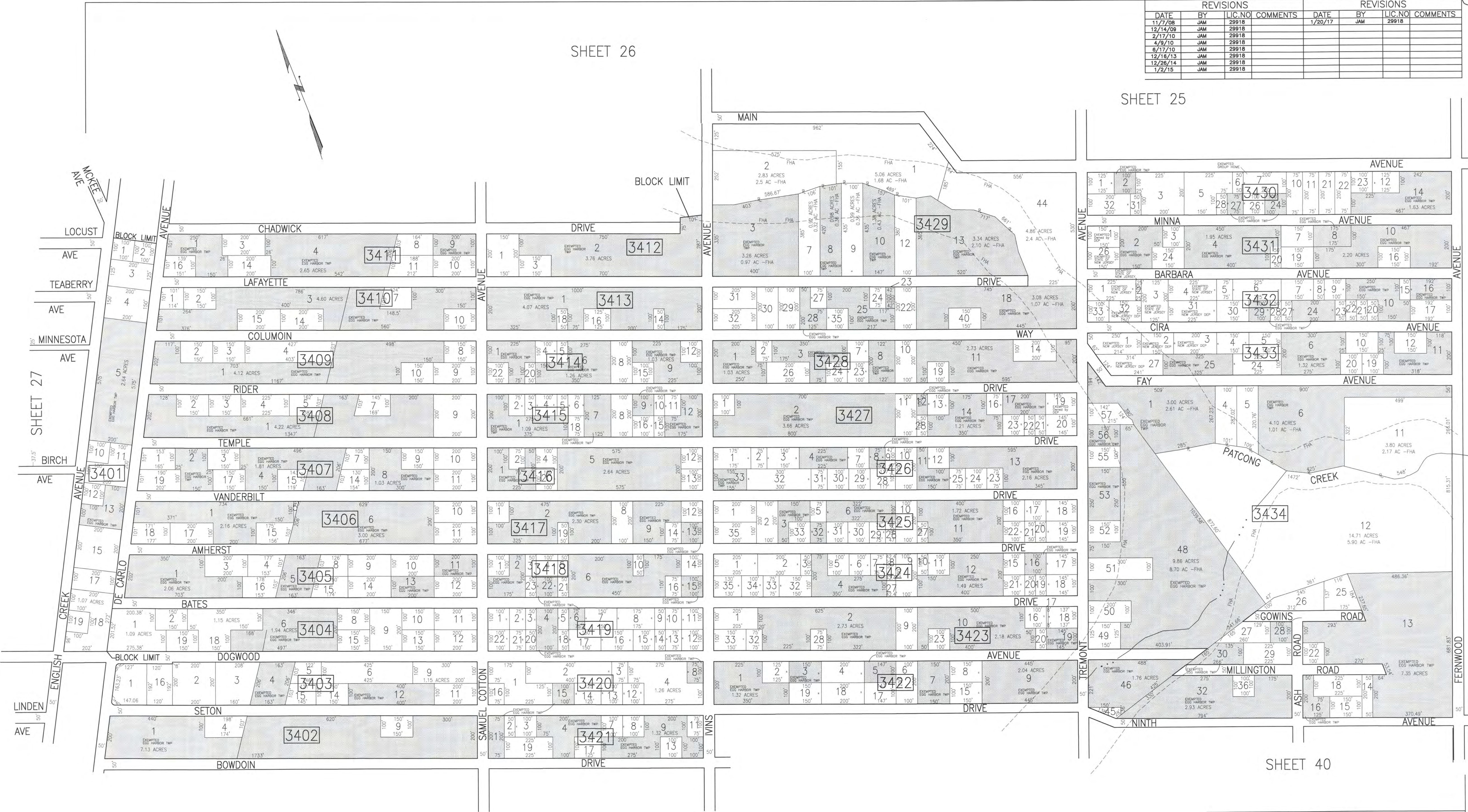
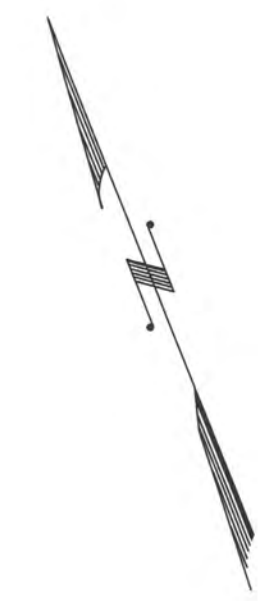


SHEET 26

SHEET 25

REVISIONS				REVISIONS			
DATE	BY	LIC. NO.	COMMENTS	DATE	BY	LIC. NO.	COMMENTS
11/7/08	JAM	29918		1/20/17	JAM	29918	
12/14/09	JAM	29918					
2/17/10	JAM	29918					
4/8/10	JAM	29918					
8/17/10	JAM	29918					
12/16/13	JAM	29918					
12/28/14	JAM	29918					
1/2/15	JAM	29918					



SHEET 33

SHEET 40

SHADED AREAS INDICATE EGG HARBOR TOWNSHIP EXEMPTED PROPERTY

THIS SHEET HAS BEEN DRAWN USING COMPUTER AIDED DRAFTING/DESIGN (CAD/D).

TAX MAP
 TOWNSHIP OF EGG HARBOR
 ATLANTIC COUNTY, NEW JERSEY
 SCALE: 1"=200'
 JANUARY 2010
 JAMES A. MOTT, PE, PLS
 PROFESSIONAL ENGINEER & LAND SURVEYOR
 NEW JERSEY LICENSE NO. 29918
 3122 FIRE ROAD
 EGG HARBOR TOWNSHIP, NJ 08234