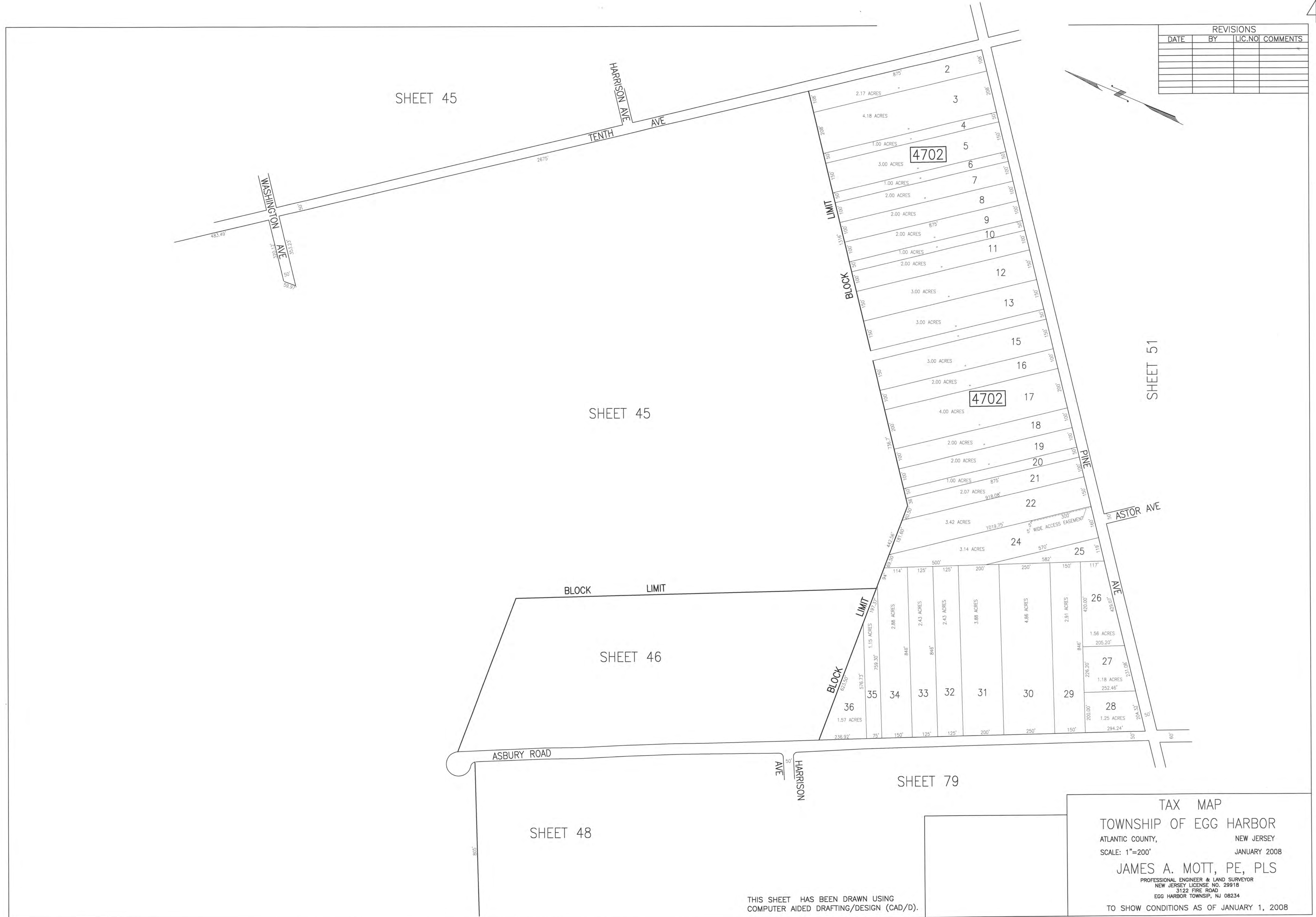
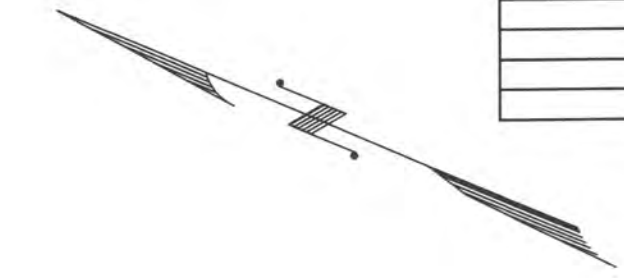


| REVISIONS |    |        |          |
|-----------|----|--------|----------|
| DATE      | BY | LIC.NO | COMMENTS |
|           |    |        |          |
|           |    |        |          |
|           |    |        |          |
|           |    |        |          |
|           |    |        |          |
|           |    |        |          |
|           |    |        |          |



THIS SHEET HAS BEEN DRAWN USING  
COMPUTER AIDED DRAFTING/DESIGN (CAD/D).

**TAX MAP**  
**TOWNSHIP OF EGG HARBOR**  
 ATLANTIC COUNTY, NEW JERSEY  
 SCALE: 1"=200' JANUARY 2008  
**JAMES A. MOTT, PE, PLS**  
PROFESSIONAL ENGINEER & LAND SURVEYOR  
 NEW JERSEY LICENSE NO. 29918  
 3122 FIRE ROAD  
 EGG HARBOR TOWNSHIP, NJ 08234  
 TO SHOW CONDITIONS AS OF JANUARY 1, 2008