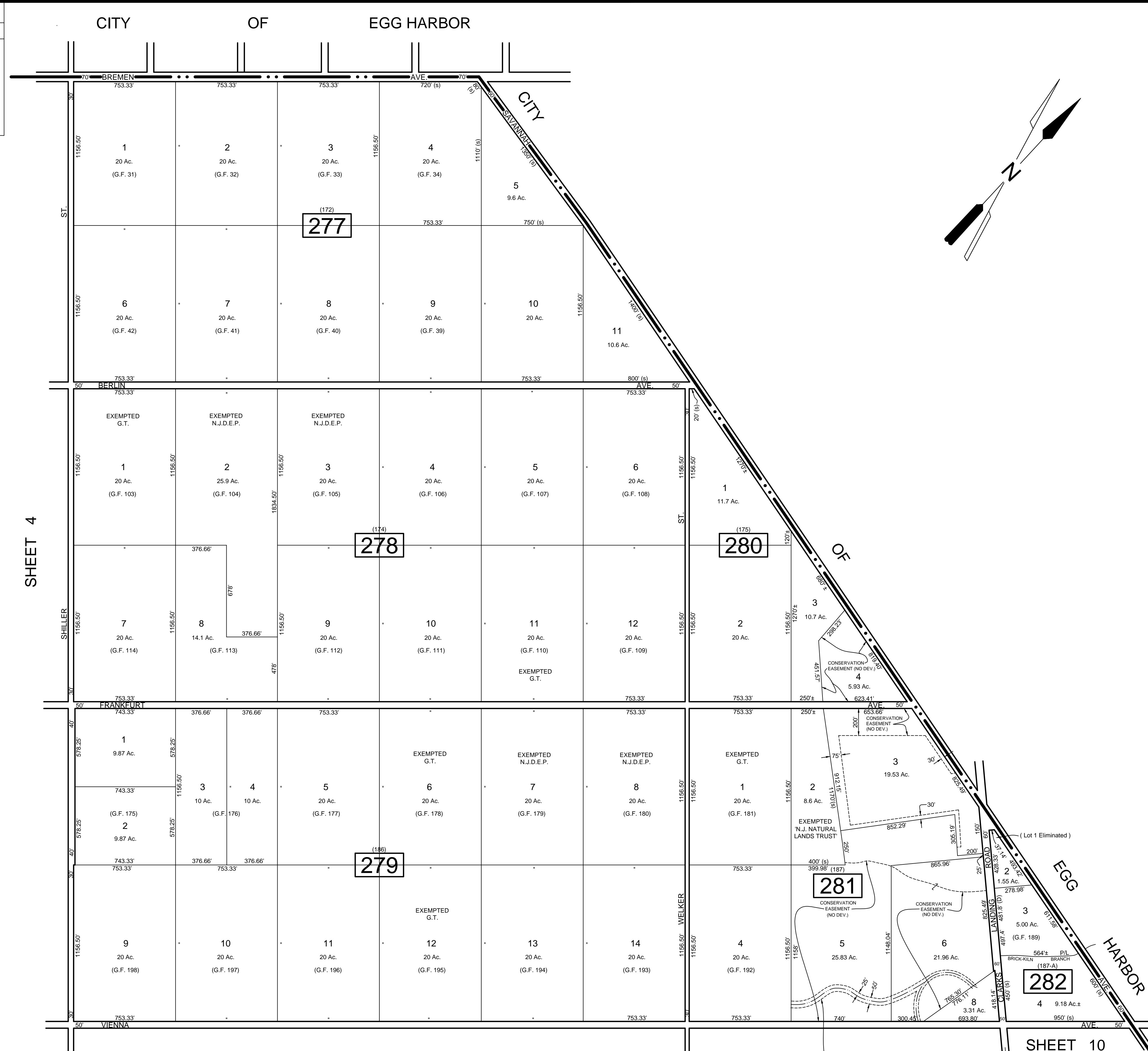


REVISIONS		
DATE	NAME	NO.
Aug. 2008	Dixon Assoc.	1
Nov. 15, 2010	Dixon Assoc.	2



SHEET 4

SHEET 9

SHEET 10

NOTE:  
 LETTERS G.F. INDICATES NUMBER ON MAP OF GLOUCESTER FARM & TOWN ASSOCIATION.  
 LETTERS G.T. INDICATES GALLOWAY TOWNSHIP OWNED PROPERTY.

THIS SHEET HAS BEEN DRAWN USING COMPUTER AIDED DRAFTING / DESIGN (CAD/D) AND WAS DONE UNDER THE SUPERVISION OF SAMUEL S. PREVITERA, P.L.S., NEW JERSEY PROFESSIONAL LAND SURVEYOR LICENSE NO. 38976, AND DATED DECEMBER 31, 2006.

REVISIONS TO THIS MAP  
 HAVE BEEN MADE BY  
**DANIEL J. GALLETTA, P.L.S.**  
 N.J. LIC. NO. 25050

DATE: 11/15/12

**TAX MAP**  
 TOWNSHIP OF GALLOWAY  
 ATLANTIC COUNTY, NEW JERSEY  
 SCALE: 1" = 400'  
 JANUARY 2007

**SAMUEL S. PREVITERA, P.L.S.**  
 N.J. LIC. NO. 38976

26 NORTH ROUTE 73, SUITE 200  
 CEDAR BROOK, N.J. 08018