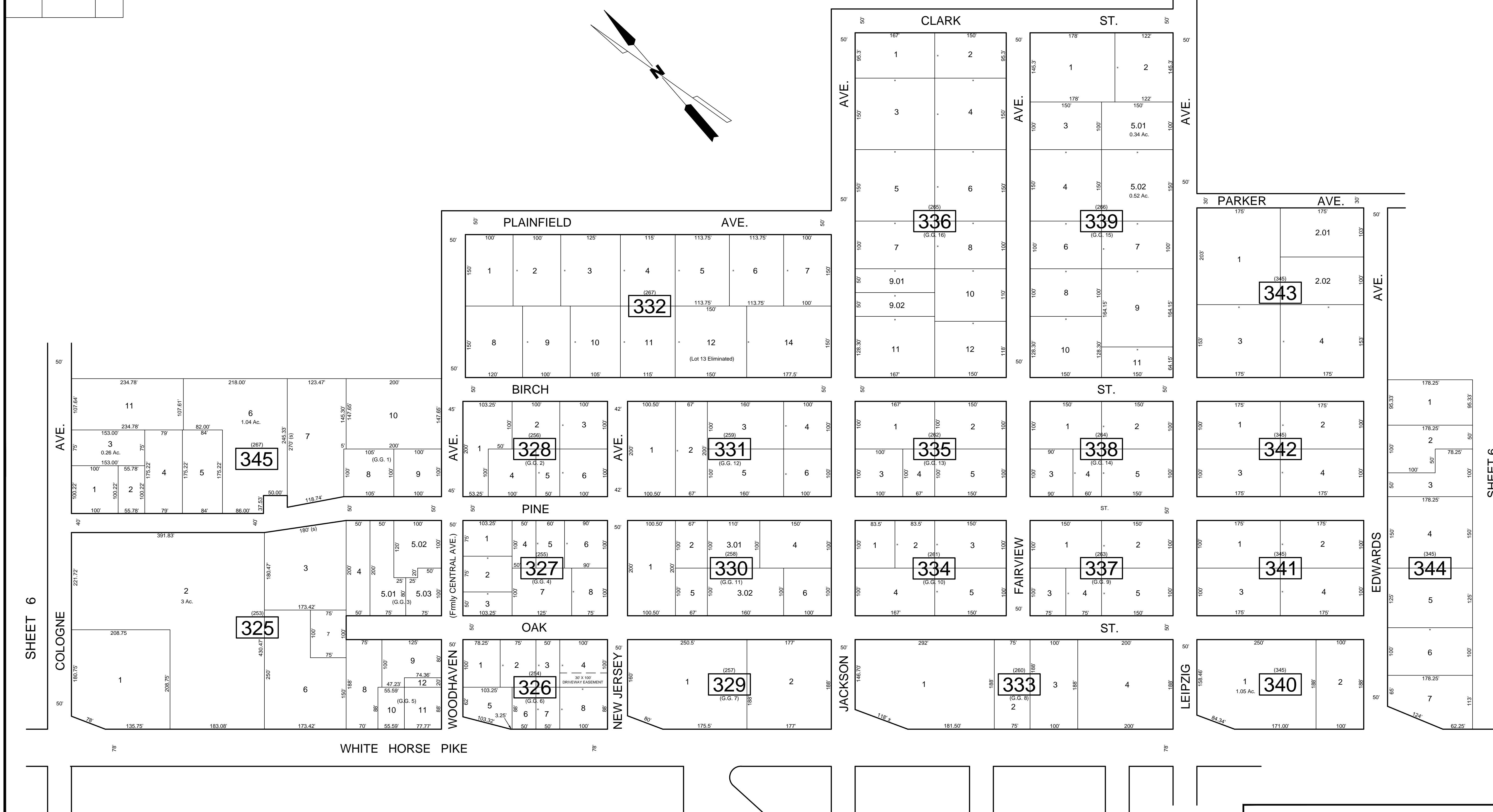
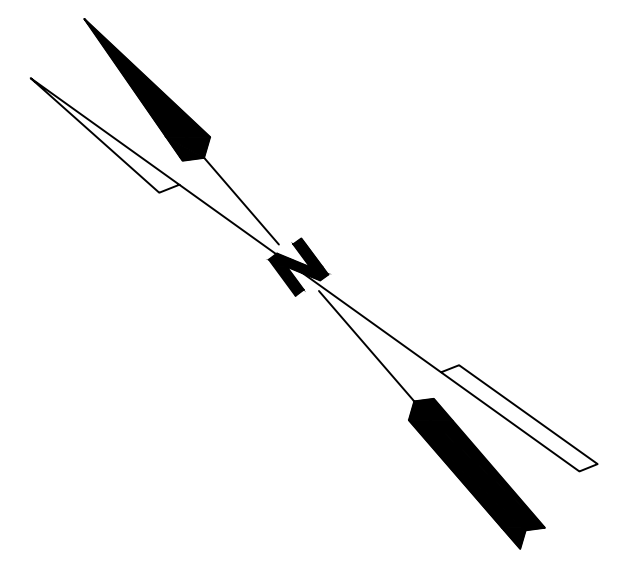


REVISIONS		
DATE	NAME	NO.
Aug. 2008	Dixon Assoc.	1

SHEET 6



SHEET 6

SHEET 6

NOTE:  
LETTERS 'G.G.' INDICATES NUMBER ON MAP OF 'GERMANIA GARDENS'.

SHEET 6

TAX MAP  
TOWNSHIP OF GALLOWAY  
ATLANTIC COUNTY, NEW JERSEY  
SCALE: 1" = 100'  
JANUARY 2007  
SAMUEL S. PREVITERA, P.L.S.  
N.J. LIC. No. 38976  
26 NORTH ROUTE 73, SUITE 200  
CEDAR BROOK, N.J. 08018

THIS SHEET IS AN AUTOCAD COMPUTER GENERATED VERSION OF THE EXISTING APPROVED TAX MAPS AND WAS DONE UNDER THE SUPERVISION OF SAMUEL S. PREVITERA, P.L.S., NEW JERSEY PROFESSIONAL LAND SURVEYOR LICENSE NO. 38976, AND DATED DECEMBER 31, 2006.