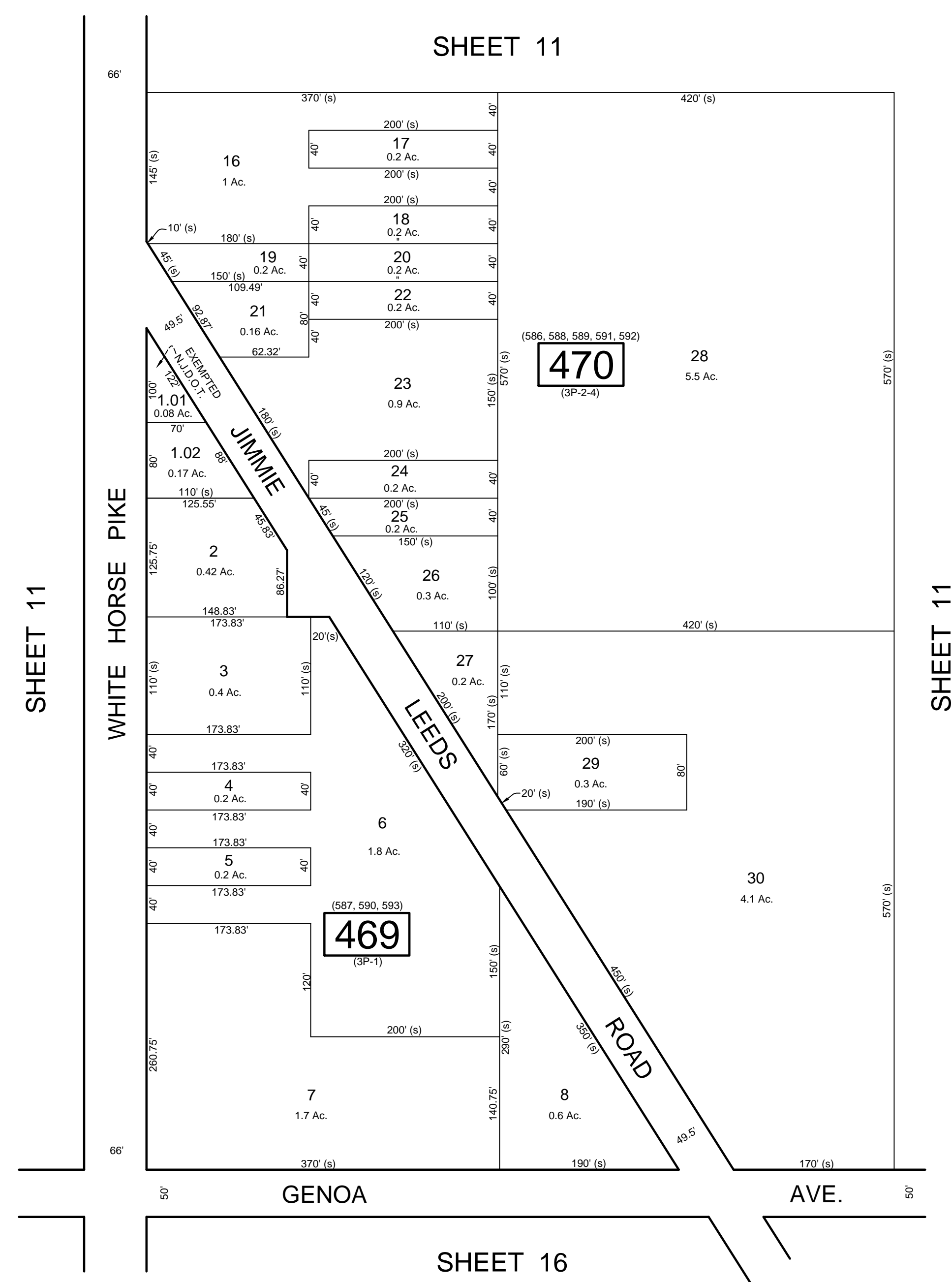
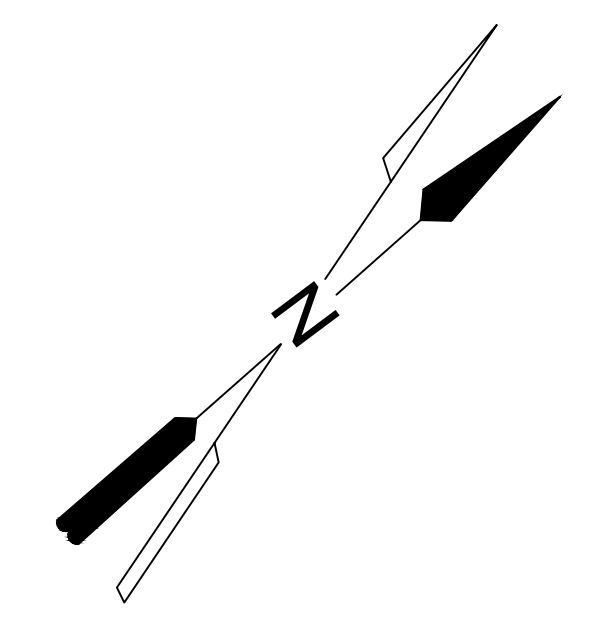


REVISIONS		
DATE	NAME	NO.
Dec. 2006	Dixon Assoc.	1



NOTE:  
 LETTER "P" INDICATES NUMBER ON MAP OF TOWN OF "POMONA" BY G.P. GEHRING.  
 LETTER "3P" INDICATES NUMBER ON MAP OF "POMONA 3rd EXT." BY G.P. GEHRING

THIS SHEET HAS BEEN DRAWN USING COMPUTER AIDED DRAFTING / DESIGN (CAD/D)  
 AND WAS DONE UNDER THE SUPERVISION OF SAMUEL S. PREVITERA, P.L.S., NEW JERSEY  
 PROFESSIONAL LAND SURVEYOR LICENSE NO. 38976, AND DATED DECEMBER 31, 2006.

**TAX MAP**  
 TOWNSHIP OF GALLOWAY  
 ATLANTIC COUNTY, NEW JERSEY  
 SCALE: 1" = 100'      JANUARY 2007  
 SAMUEL S. PREVITERA, P.L.S.  
 N.J. LIC. No. 38976  
 26 NORTH ROUTE 73, SUITE 200  
 CEDAR BROOK, N.J. 08018