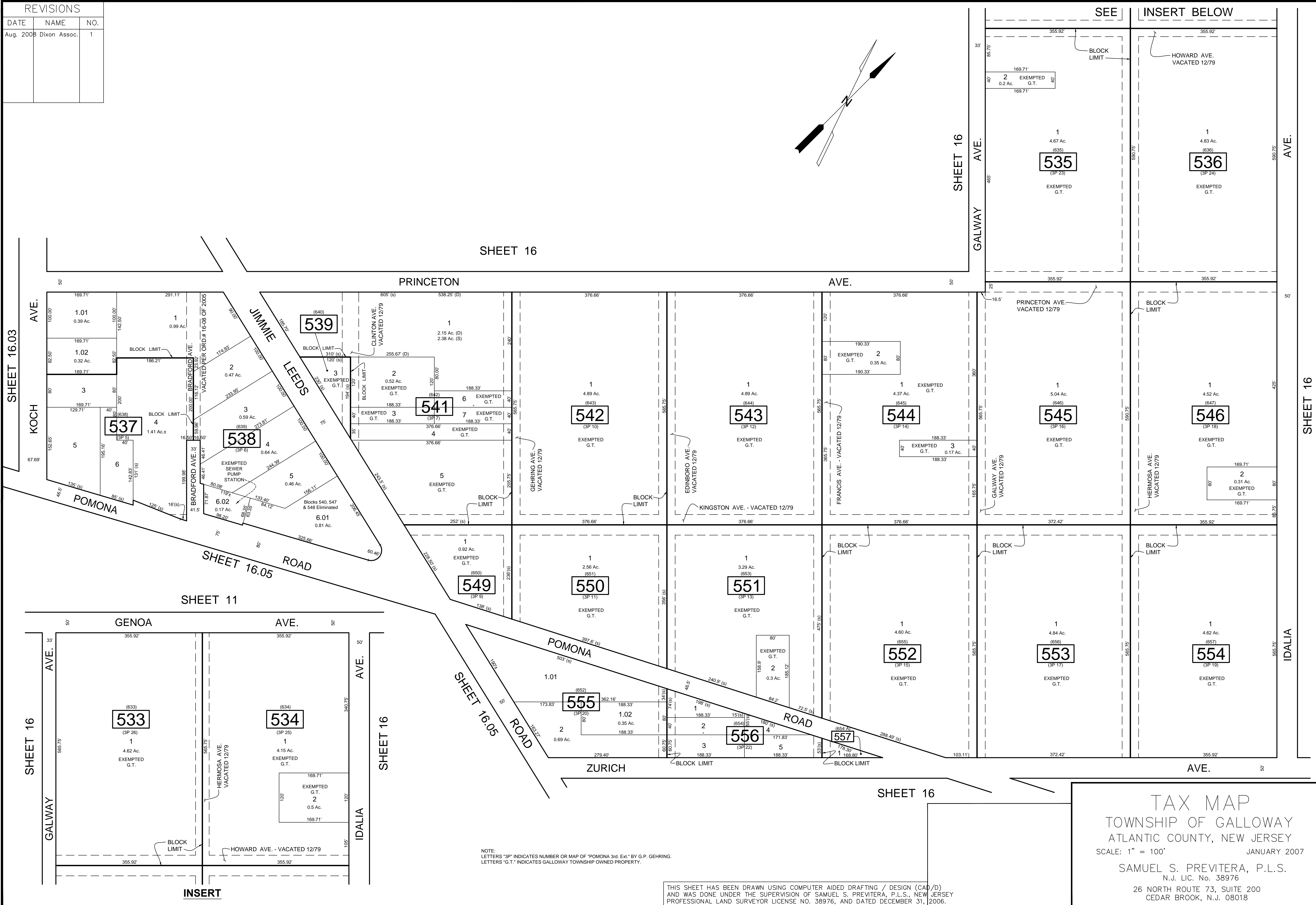
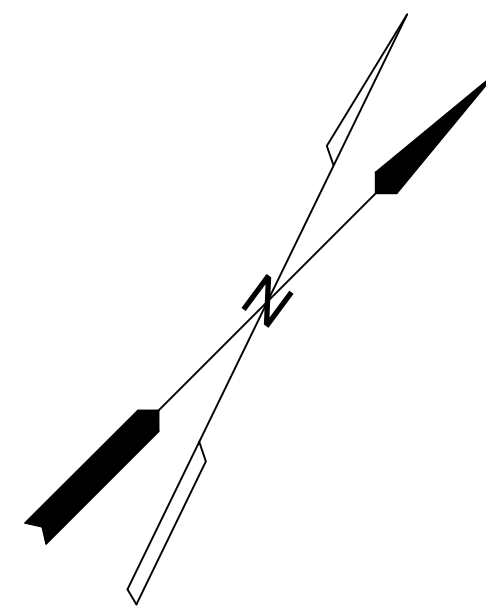


REVISIONS		
DATE	NAME	NO.
Aug. 2008	Dixon Assoc.	1



SHEET 16

PRINCETON AVE.

PRINCETON AVE.

SHEET 16.03

KOCH AVE.

SHEET 16

GALWAY AVE.

SHEET 16

IDALIA AVE.

SHEET 11

GENOA AVE.

GENOA AVE.

SHEET 16

SHEET 16.05

POMONA ROAD

SHEET 16

SHEET 16

NOTE:  
 LETTERS "3P" INDICATES NUMBER OR MAP OF "POMONA 3rd Ext." BY G.P. GEHRING.  
 LETTERS "G.T." INDICATES GALLOWAY TOWNSHIP OWNED PROPERTY.

THIS SHEET HAS BEEN DRAWN USING COMPUTER AIDED DRAFTING / DESIGN (CAD/D) AND WAS DONE UNDER THE SUPERVISION OF SAMUEL S. PREVITERA, P.L.S., NEW JERSEY PROFESSIONAL LAND SURVEYOR LICENSE NO. 38976, AND DATED DECEMBER 31, 2006.

SEE INSERT BELOW

TAX MAP  
 TOWNSHIP OF GALLOWAY  
 ATLANTIC COUNTY, NEW JERSEY  
 SCALE: 1" = 100' JANUARY 2007  
 SAMUEL S. PREVITERA, P.L.S.  
 N.J. LIC. NO. 38976  
 26 NORTH ROUTE 73, SUITE 200  
 CEDAR BROOK, N.J. 08018