

REVISIONS		
DATE	NAME	NO.

SOCIETY HILL DR.

SHEET 23.02

COLLINS ROAD

OLD COLLINS RD.

SHEET 24

SUSSEX PLACE (PRIVATE ROAD)

GREENWICH DRIVE (PRIVATE ROAD)

RECREATION

SUSSEX PLACE

CHESHIRE DRIVE

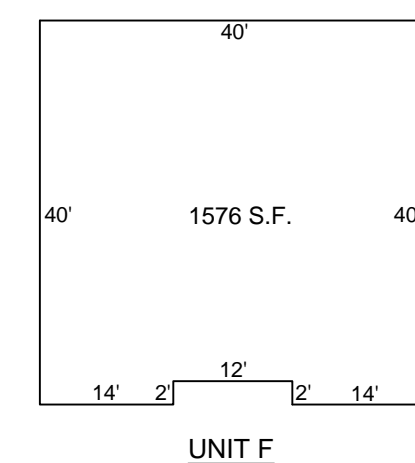
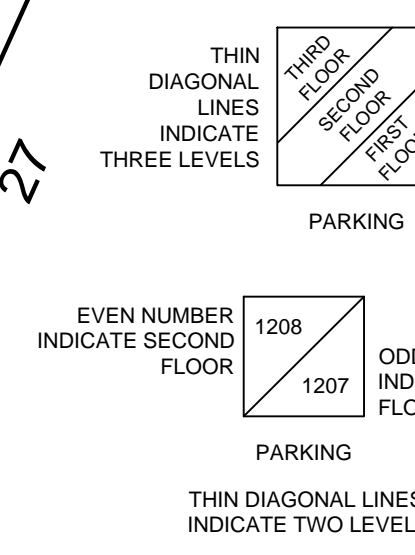
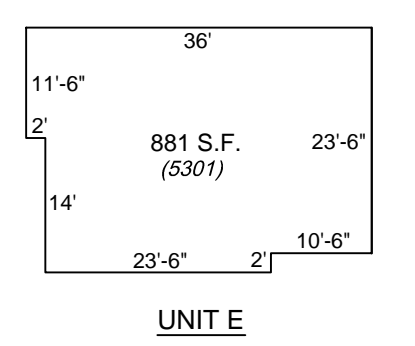
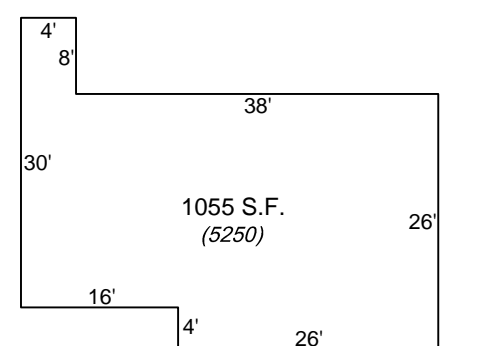
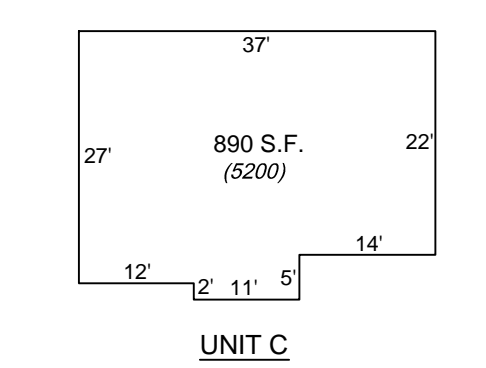
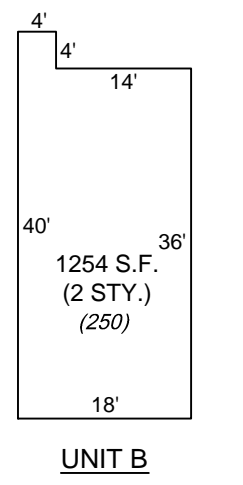
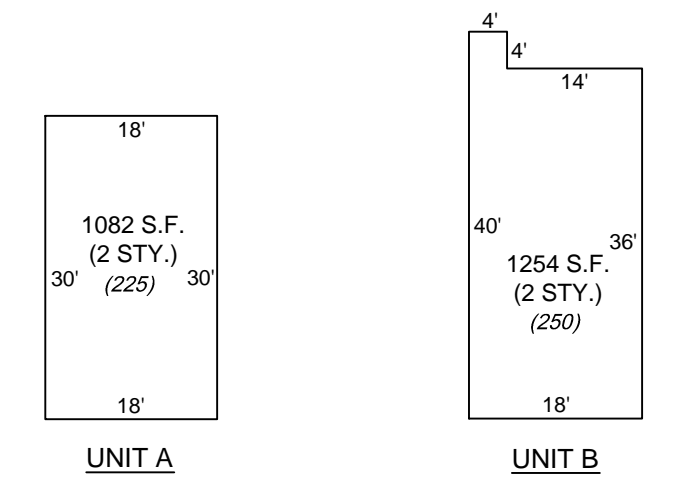
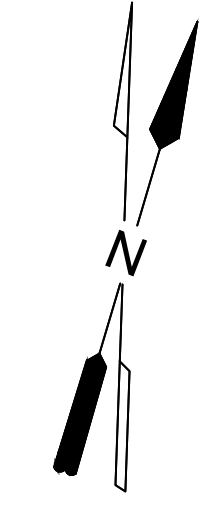
PITNEY ROAD

SHEET 24.10

15.04
46.29 Acres (C.E.)

988.11

SHEET 24



SCALE: 1" = 20'

TAX MAP
TOWNSHIP OF GALLOWAY
ATLANTIC COUNTY, NEW JERSEY
SCALE: 1" = 100' JANUARY 2007
SAMUEL S. PREVITERA, P.L.S.
N.J. LIC. No. 38976
26 NORTH ROUTE 73, SUITE 200
CEDAR BROOK, N.J. 08018

THIS SHEET HAS BEEN DRAWN USING COMPUTER AIDED DRAFTING / DESIGN (CAD/D) AND WAS DONE UNDER THE SUPERVISION OF SAMUEL S. PREVITERA, P.L.S., NEW JERSEY PROFESSIONAL LAND SURVEYOR LICENSE NO. 38976, AND DATED DECEMBER 31, 2006.