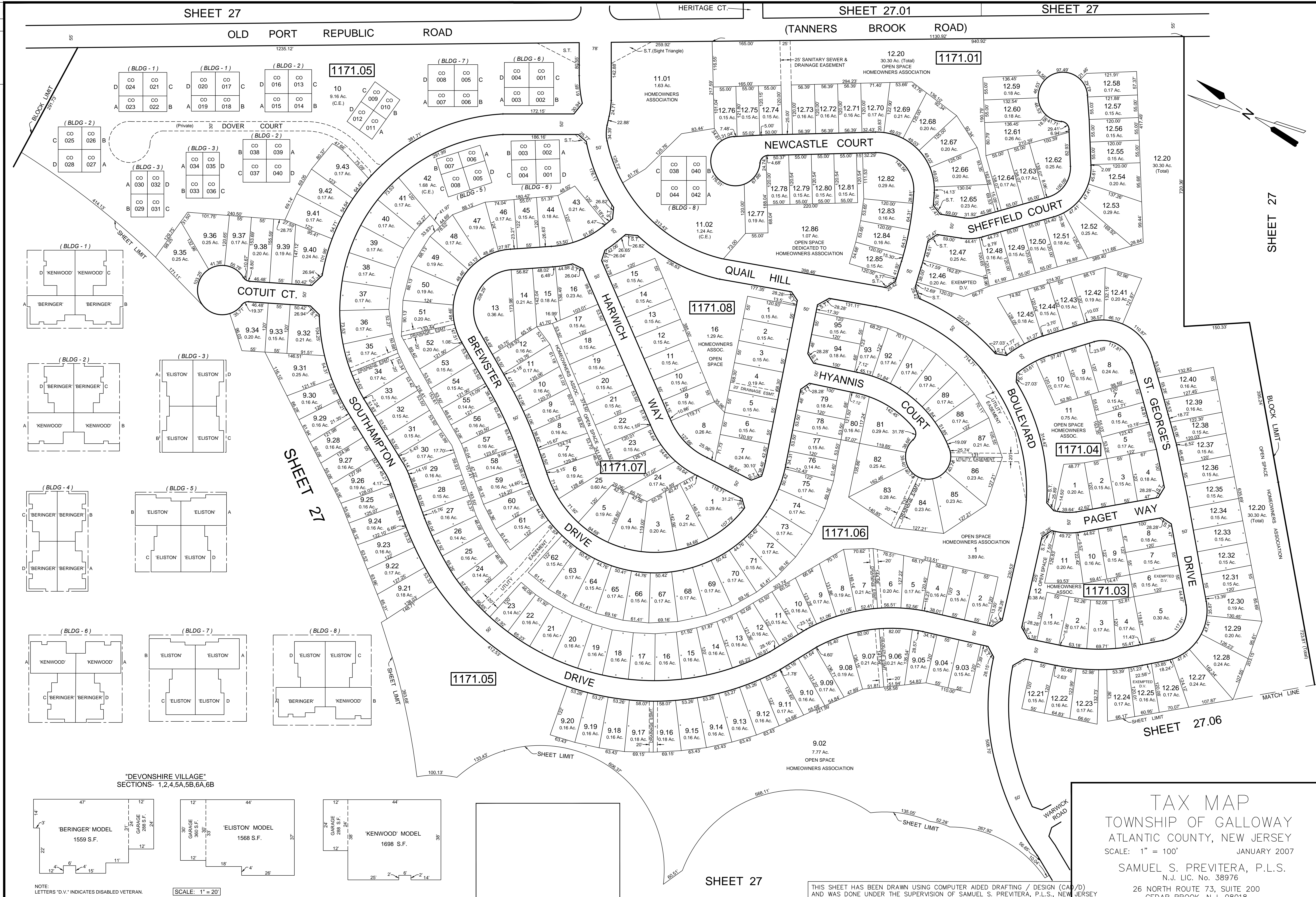
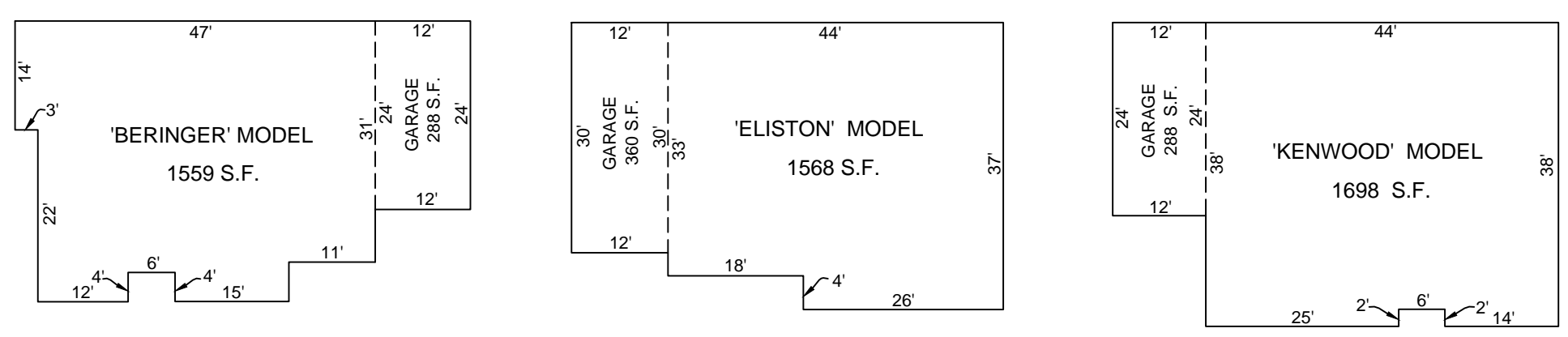


REVISIONS		
DATE	NAME	NO.



"DEVONSHIRE VILLAGE"
SECTIONS - 1,2,4,5A,5B,6A,6B



NOTE: LETTERS 'D.V.' INDICATES DISABLED VETERAN.
SCALE: 1" = 20'

TAX MAP
TOWNSHIP OF GALLOWAY
ATLANTIC COUNTY, NEW JERSEY
SCALE: 1" = 100' JANUARY 2007

SAMUEL S. PREVITERA, P.L.S.
N.J. LIC. NO. 38976

26 NORTH ROUTE 73, SUITE 200
CEDAR BROOK, N.J. 08018

THIS SHEET HAS BEEN DRAWN USING COMPUTER AIDED DRAFTING / DESIGN (CAD) AND WAS DONE UNDER THE SUPERVISION OF SAMUEL S. PREVITERA, P.L.S., NEW JERSEY PROFESSIONAL LAND SURVEYOR LICENSE NO. 38976, AND DATED DECEMBER 31, 2006.

SHEET 27

SHEET 27