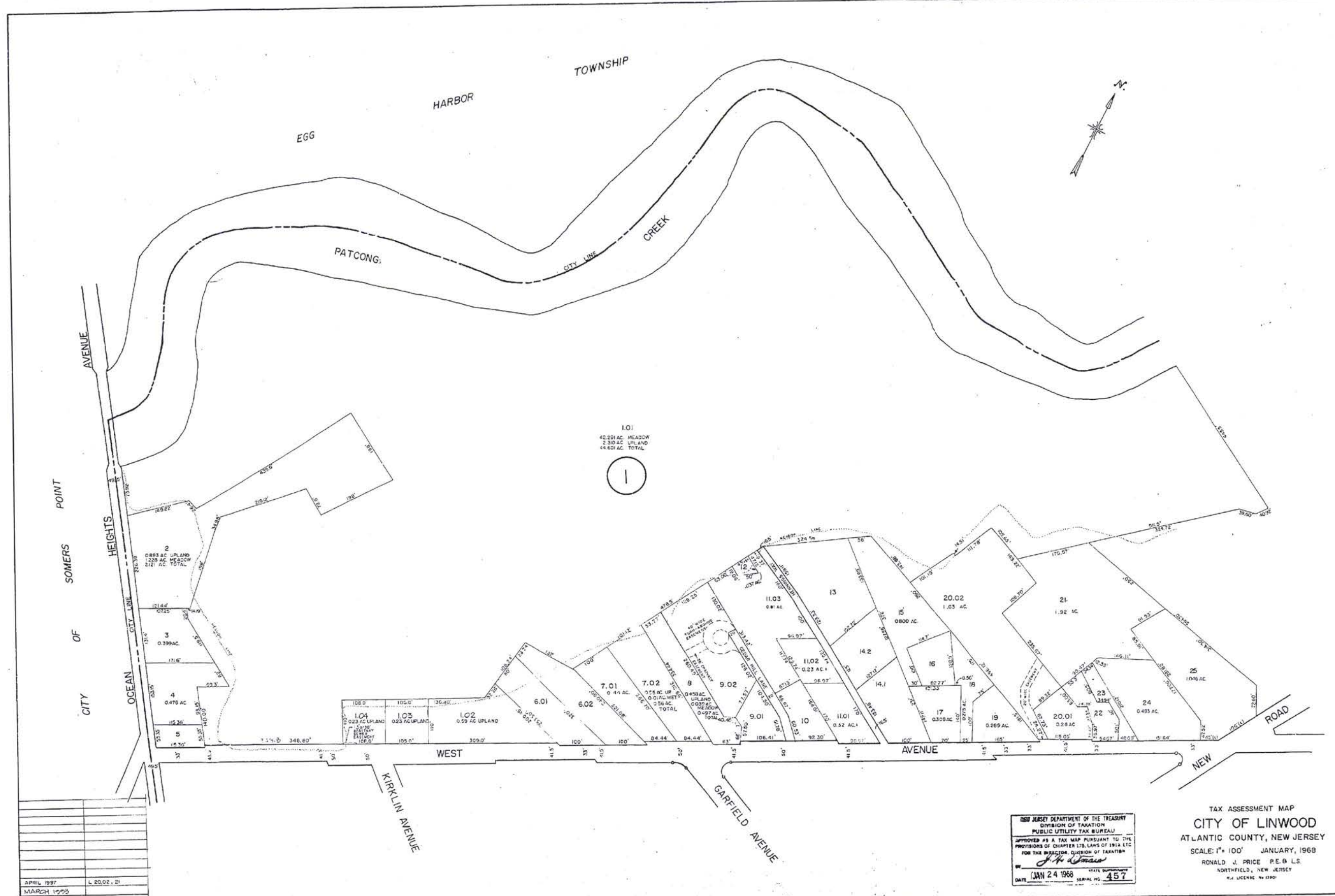


**LEGEND**  
 (10) ... INDICATES MAP PAGE NUMBER

INDEX MAP OF  
**LINWOOD CITY**  
 ATLANTIC COUNTY, NEW JERSEY

252

**NOTES**



SEE ADJOINING SHEET 4

SEE ADJOINING SHEET 5

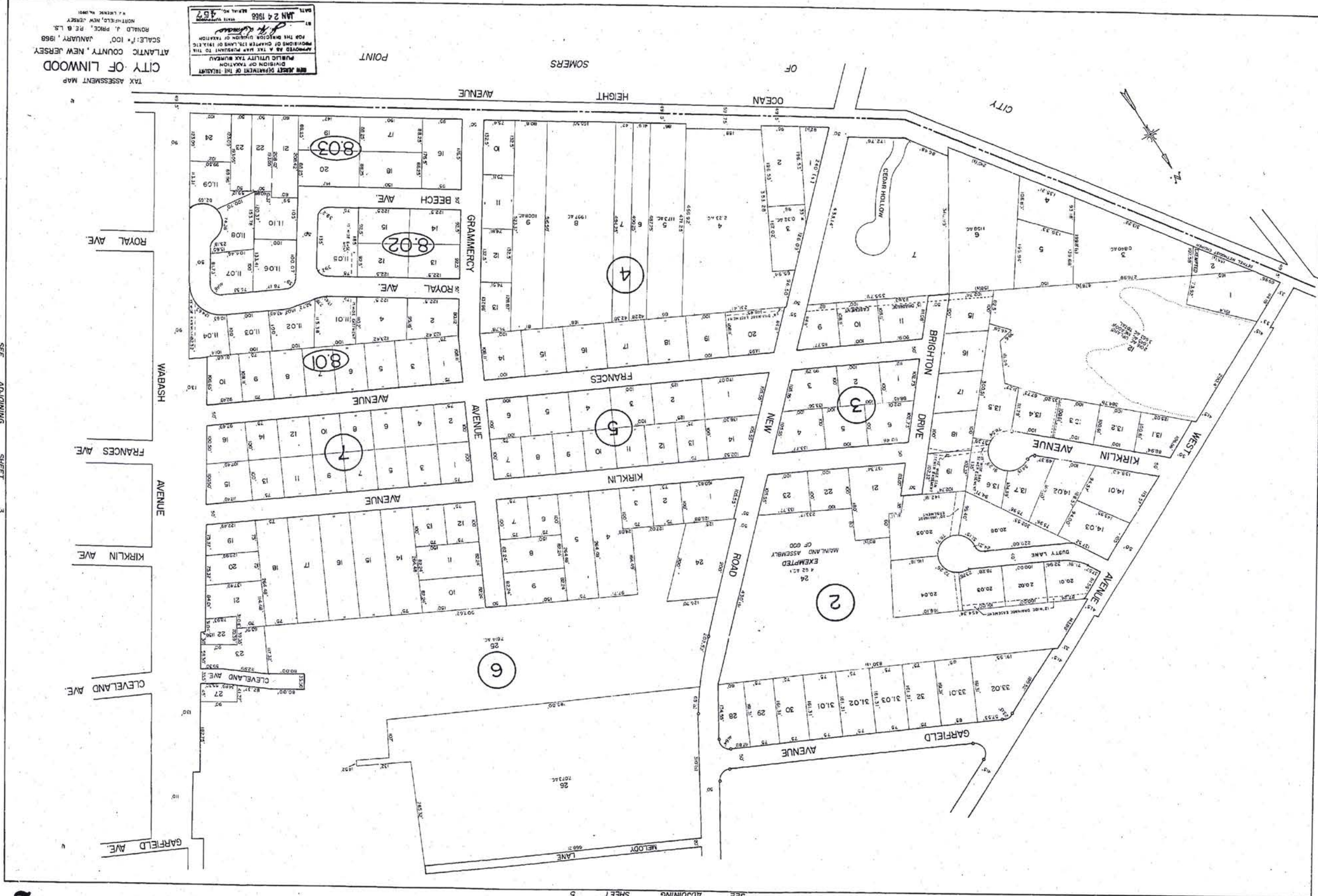
REVISIONS	
APRIL 1997	L 20.02, 21
MARCH 1995	

NEW JERSEY DEPARTMENT OF THE TREASURY  
 DIVISION OF TAXATION  
 PUBLIC UTILITY TAX BUREAU  
 APPROVED AS A TAX MAP PURSUANT TO THE  
 PROVISIONS OF CHAPTER 125, LAWS OF 1984, ETC.  
 FOR THE DIRECTOR, DIVISION OF TAXATION  
*J. H. [Signature]*  
 DATE: JAN 24 1968 SERIAL NO. 457

TAX ASSESSMENT MAP  
 CITY OF LINWOOD  
 ATLANTIC COUNTY, NEW JERSEY  
 SCALE: 1" = 100' JANUARY, 1968  
 RONALD J. PRICE P.E. & L.S.  
 NORTHFIELD, NEW JERSEY  
 N.J. LICENSE NO. 1390

SEE ADJOINING SHEET 2

SEE ADJOINING SHEET 5



TAX ASSESSMENT MAP  
 CITY OF LINWOOD  
 ATLANTIC COUNTY, NEW JERSEY  
 SCALE: 1" = 100' JANUARY, 1988  
 RONALD J. PRICE, P.E. & L.S.  
 NORTHFIELD, NEW JERSEY  
 14 LINCOLN BLVD.

NEW JERSEY DEPARTMENT OF THE TREASURY  
 DIVISION OF TAXATION  
 APPROVED AS A TAX MAP PURSUANT TO THE  
 PROVISIONS OF CHAPTER 125, LAWS OF 1987.  
 FOR THE DEPARTMENT OF TREASURY  
 DATE: JAN 24 1988  
 MAP NO. 437

SEE ADJOINING SHEET 3

SEE ADJOINING SHEET 5

254

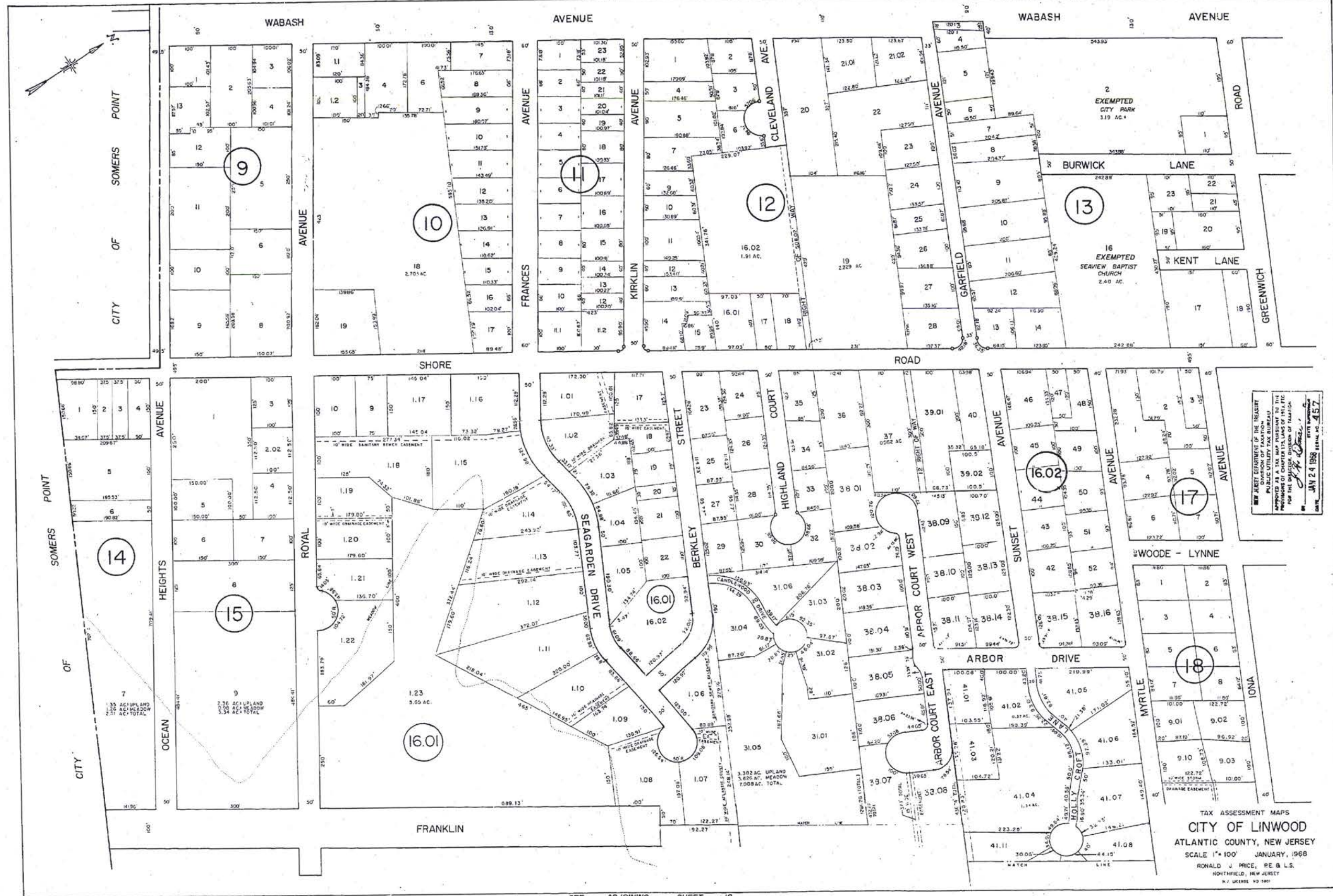
SEE ADJOINING SHEET 5

25

25

SEE ADJOINING SHEET 2

SEE ADJOINING SHEET 5



NEW JERSEY DEPARTMENT OF THE TREASURY  
 DIVISION OF TAXATION  
 PUBLIC UTILITY TAX BUREAU  
 100 NORTH WASHINGTON STREET  
 PHILADELPHIA, PENNSYLVANIA 19107  
 FOR THE DEPARTMENT OF TAXATION OF NEW JERSEY  
 DATE: JAN 24 1968 SERIAL NO. 457

TAX ASSESSMENT MAPS  
 CITY OF LINWOOD  
 ATLANTIC COUNTY, NEW JERSEY  
 SCALE 1" = 100' JANUARY, 1968  
 RONALD J. PRICE, RE & L.S.  
 NORTHFIELD, NEW JERSEY  
 N.J. LICENSE #2 1961

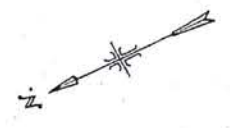
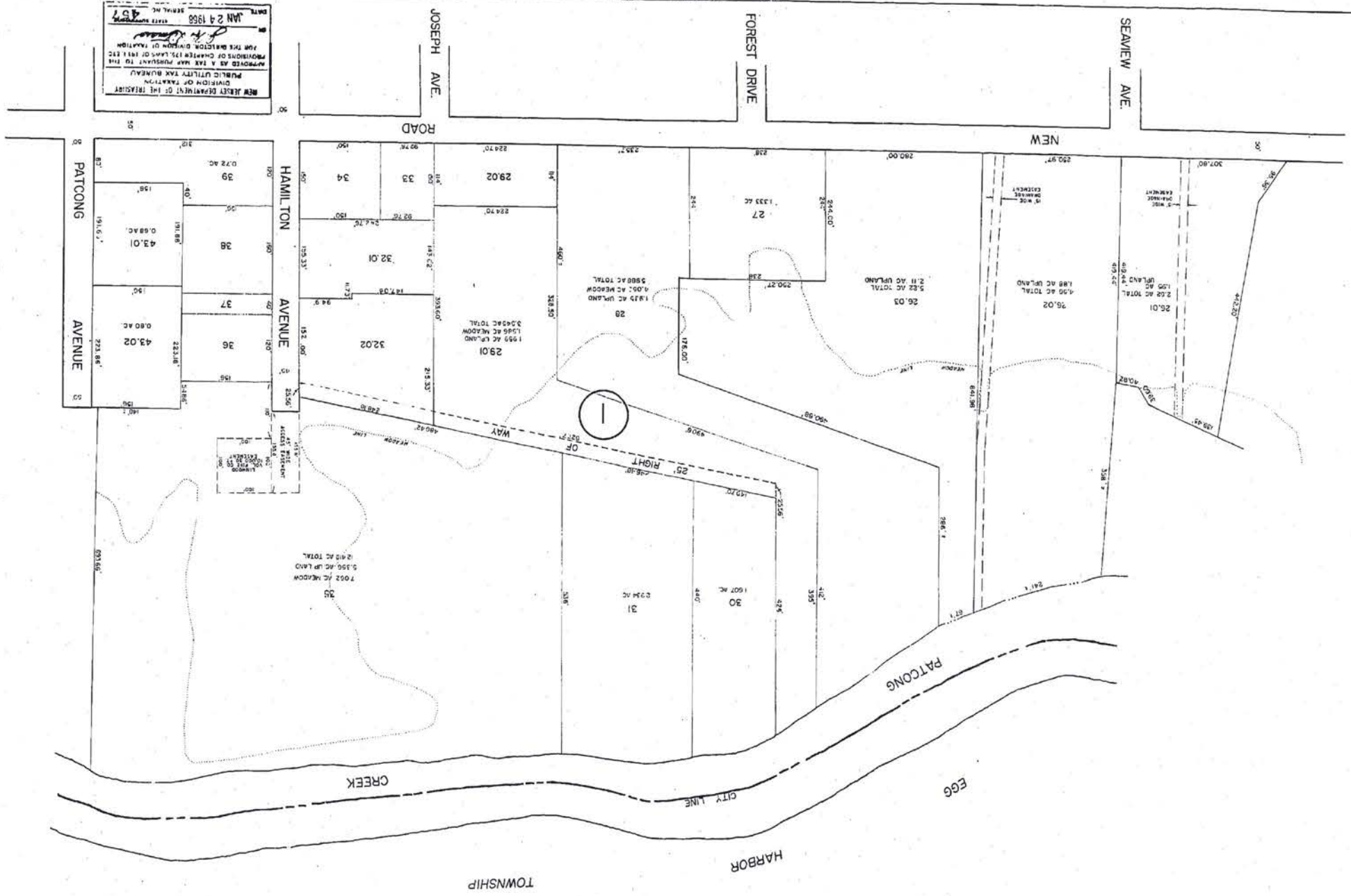
SEE ADJOINING SHEET 6

SEE ADJOINING SHEET 18

TAX ASSESSMENT MAPS  
 CITY OF LINWOOD  
 ATLANTIC COUNTY, NEW JERSEY  
 SCALE 1"=100' JANUARY 1968  
 RONALD J. PRICE, P.E. & L.S.  
 MONTMERE, NEW JERSEY  
 LICENSE NO. 1288

NEW JERSEY DEPARTMENT OF THE TREASURER  
 DIVISION OF TAXATION  
 APPROVED AS A TAX MAP PURSUANT TO THE  
 PROVISIONS OF CHAPTER 125, LAWS OF 1957  
 FOR THE DISTRICT DIVISION OF LINWOOD  
 DATE: JAN 24 1968  
 457

SEE ADJOINING SHEET 5



SEE ADJOINING SHEET 7

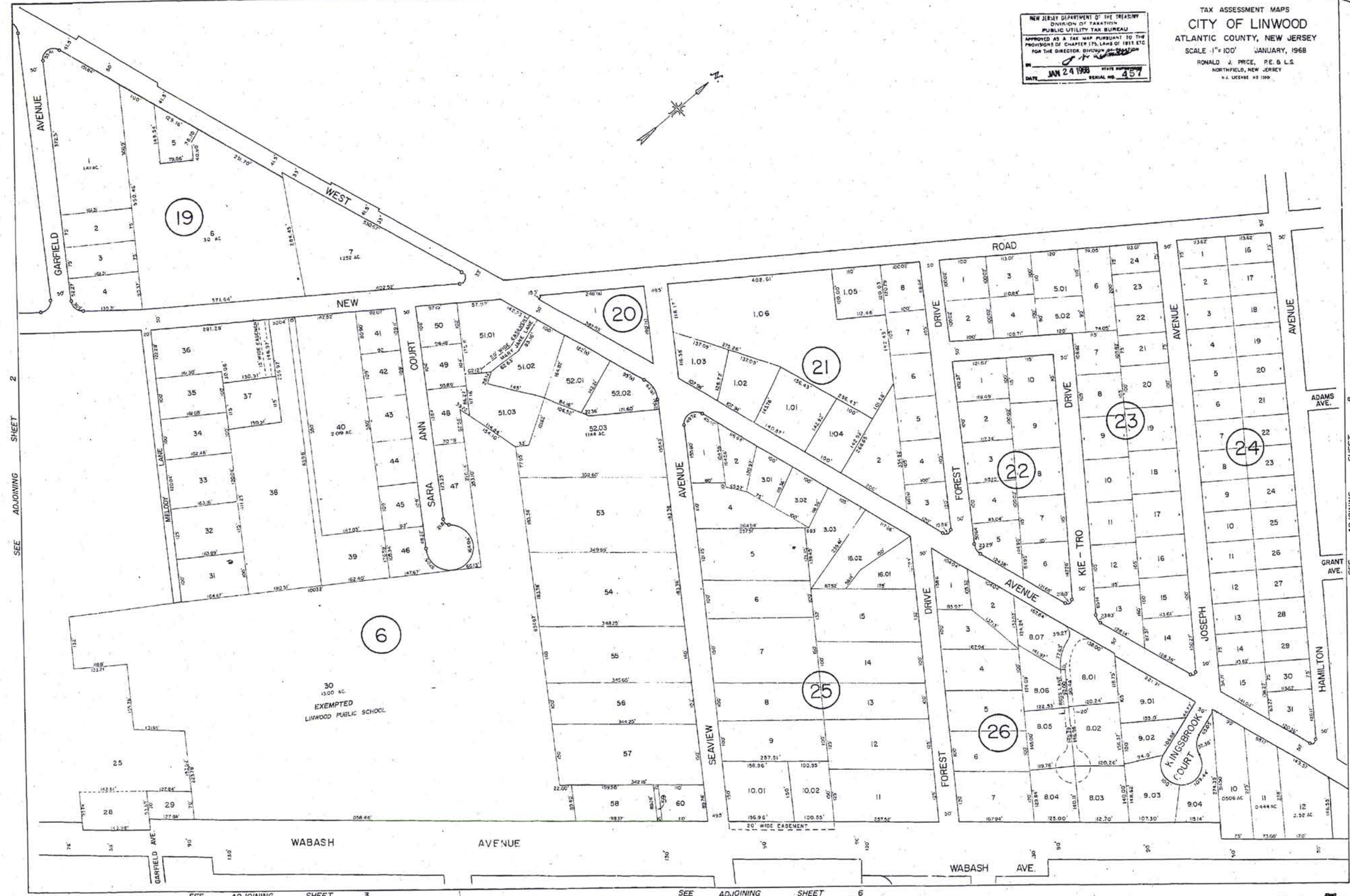
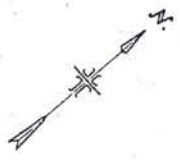
SEE ADJOINING SHEET 1

SEE ADJOINING SHEET 1

SEE ADJOINING SHEET 4

NEW JERSEY DEPARTMENT OF THE TREASURY  
 DIVISION OF TAXATION  
 PUBLIC UTILITY TAX BUREAU  
 APPROVED AS A TAX MAP PURSUANT TO THE  
 PROVISIONS OF CHAPTER 175, LAWS OF 1951 ETC.  
 FOR THE DIRECTOR, DIVISION OF TAXATION  
 DATE: JAN 29 1968 STATE ENGINEERING  
 SERIAL NO. 457

TAX ASSESSMENT MAPS  
 CITY OF LINWOOD  
 ATLANTIC COUNTY, NEW JERSEY  
 SCALE 1" = 100' JANUARY, 1968  
 RONALD J. PRICE, P.E. & L.S.  
 NORTHFIELD, NEW JERSEY  
 N.J. LICENSE NO. 199

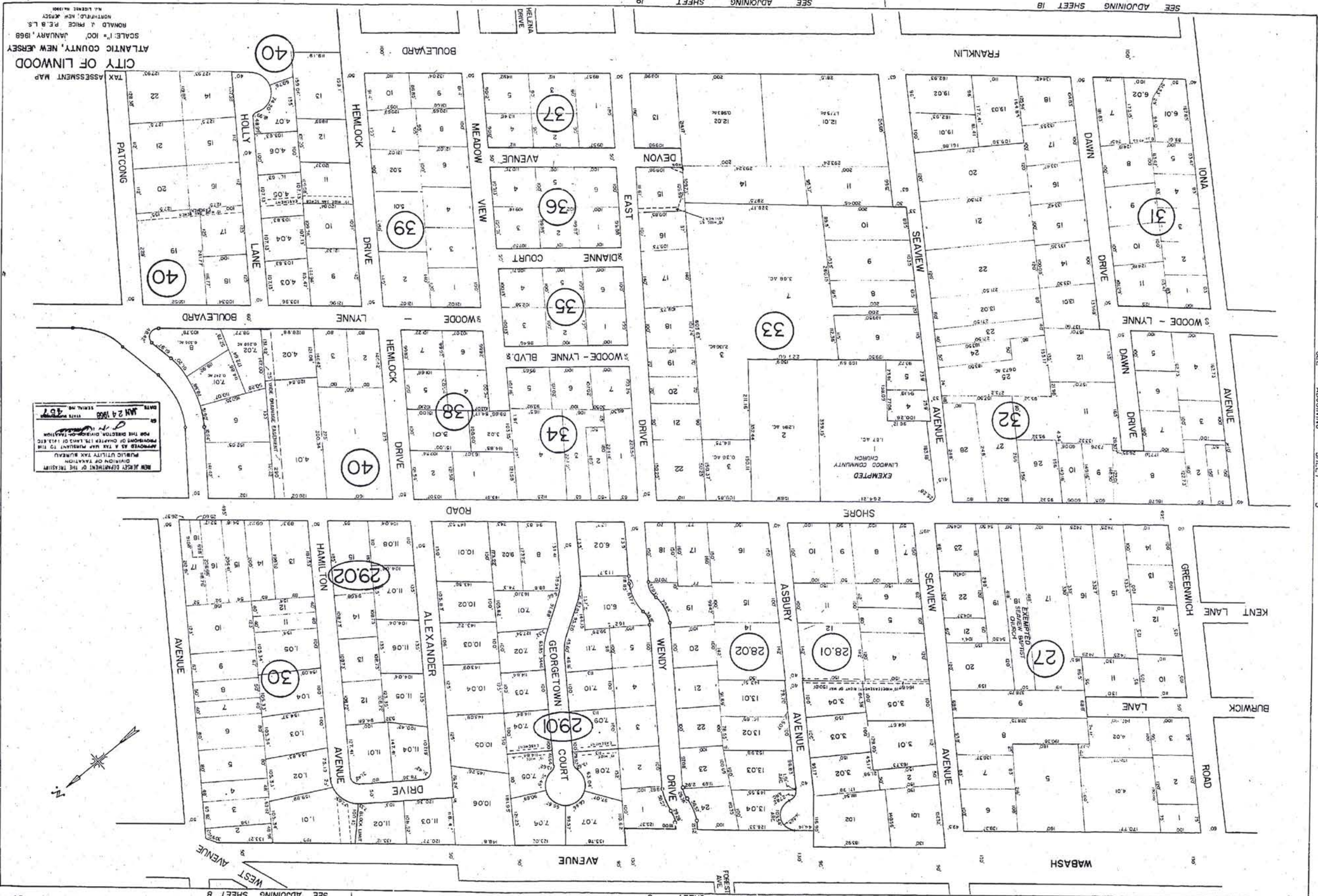


SEE ADJOINING SHEET 2

SEE ADJOINING SHEET 8

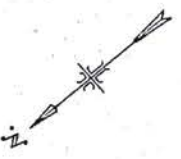
SEE ADJOINING SHEET 3

SEE ADJOINING SHEET 6



CITY OF LINWOOD  
TAX ASSESSMENT MAP  
SCALE: 1" = 100'  
JANUARY, 1968  
RONALD A. PRICE, P.E. & L.S.  
NORTHFIELD, NEW JERSEY  
M.A. LICENSE NO. 1008

NEW JERSEY DEPARTMENT OF THE TREASURY  
DIVISION OF TAXATION  
APPROVED AS A TAX MAP PURSUANT TO THE  
PROVISIONS OF CHAPTER 125, LAND OF 1952, E.T.C.  
FOR THE DIRECTOR, DIVISION OF TAXATION  
DATE: JAN 24 1968  
RECORD NO. 487



SEE ADJOINING SHEET 3

SEE ADJOINING SHEET 18

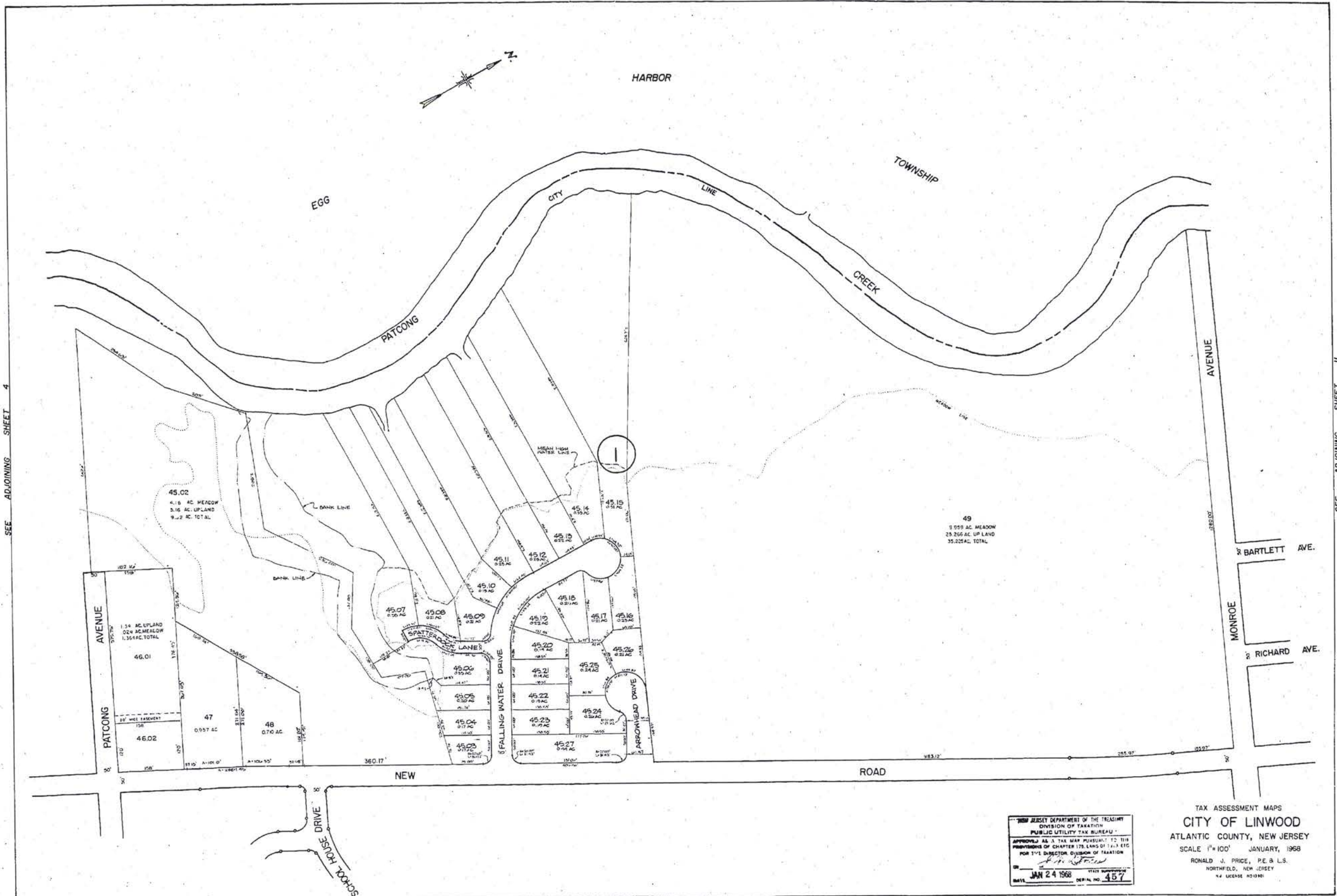
SEE ADJOINING SHEET 19

SEE ADJOINING SHEET 9

SEE ADJOINING SHEET 8

SEE ADJOINING SHEET 5

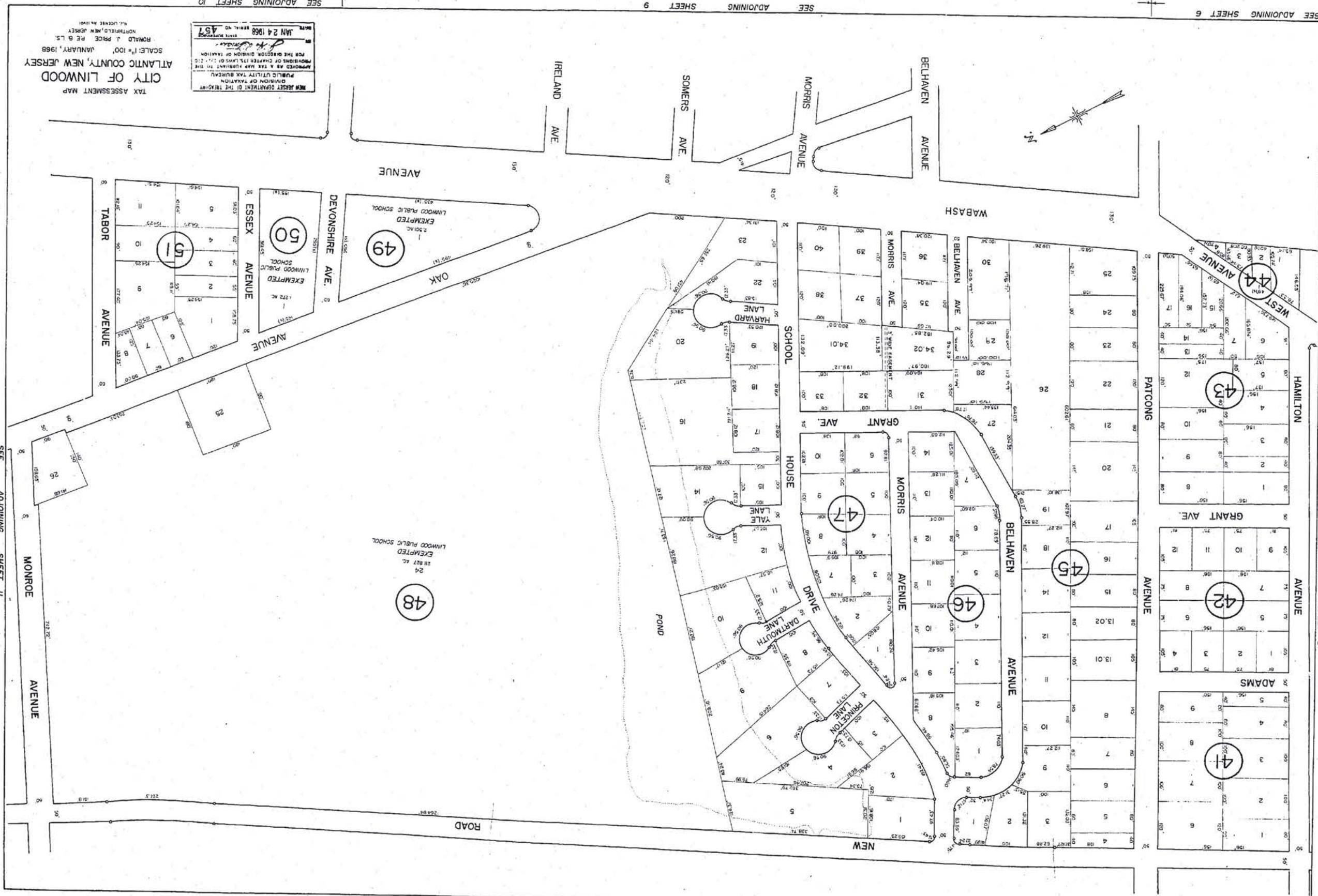




SEE ADJOINING SHEET 4

SEE ADJOINING SHEET 11

SEE ADJOINING SHEET 8

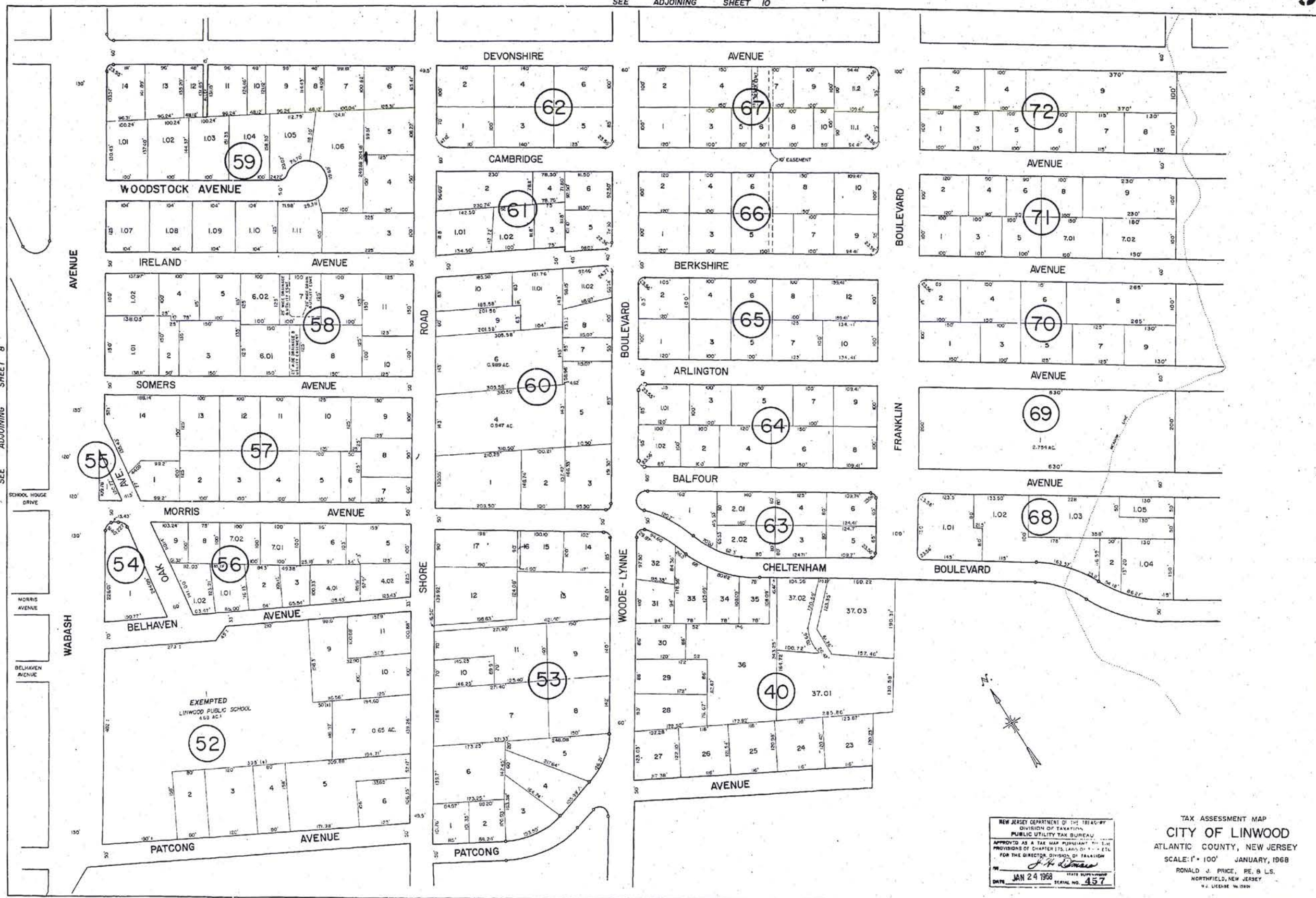


TAX ASSESSMENT MAP  
 CITY OF LINWOOD  
 ATLANTIC COUNTY, NEW JERSEY  
 SCALE: 1" = 100'  
 JANUARY, 1989  
 RONALD J. PRICE, P.E. & L.S.  
 NORTHFIELD, NEW JERSEY  
 M.F. LICENSE #41188

NEW JERSEY DEPARTMENT OF THE TREASURY  
 DIVISION OF TAXATION  
 APPROVED AS A TAX MAP SUBMITTAL TO THE  
 PROVISIONS OF CHAPTER 124, LANS OF 1977, C.D.  
 FOR THE DIVISION OF TAXATION  
 JAN 24 1989  
 491

SEE ADJOINING SHEET 6  
 SEE ADJOINING SHEET 7  
 SEE ADJOINING SHEET 11  
 SEE ADJOINING SHEET 5

SEE ADJOINING SHEET 10



SEE ADJOINING SHEET 8

SEE ADJOINING SHEET 19

SEE ADJOINING SHEET 6

SEE ADJOINING SHEET 19

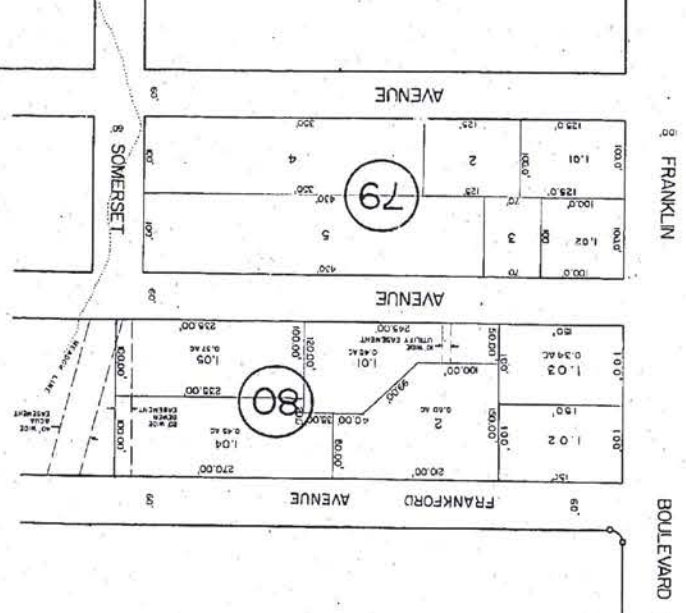
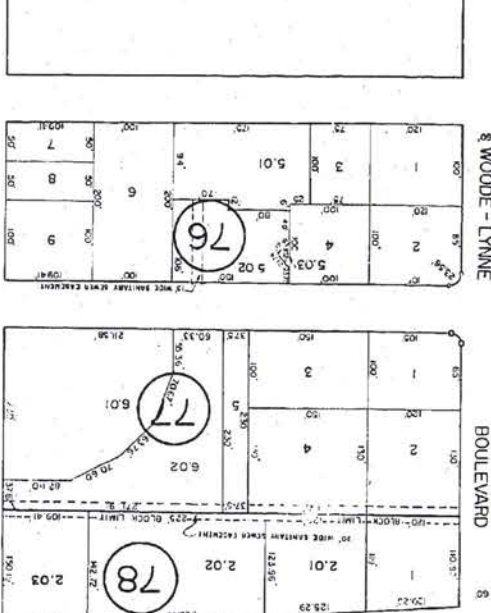
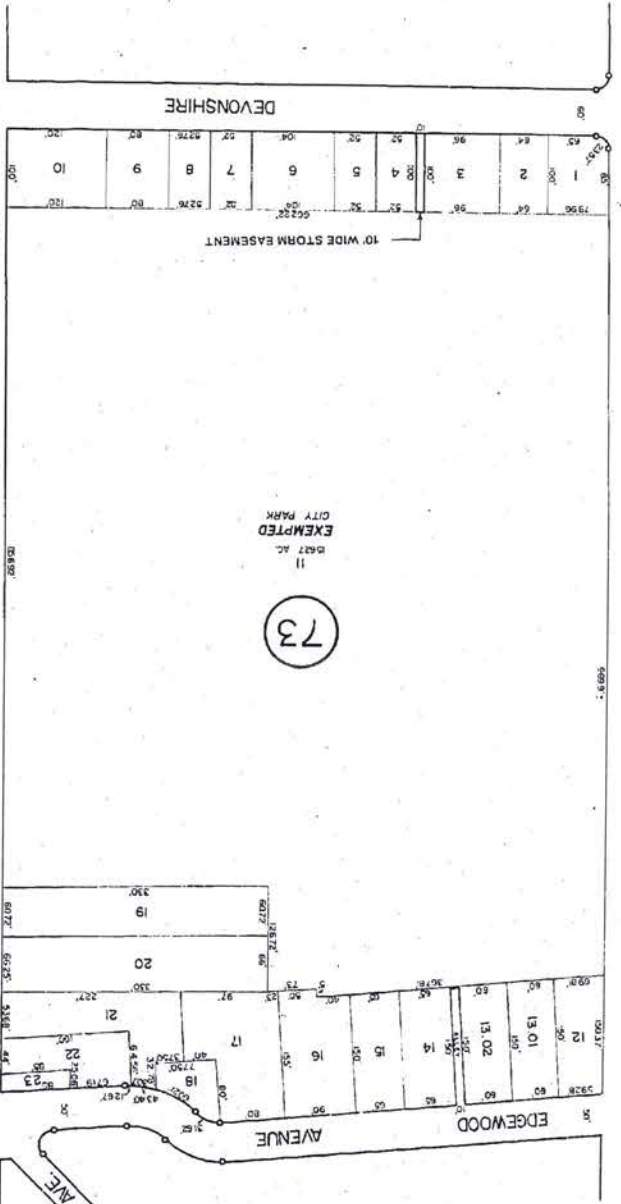
NEW JERSEY DEPARTMENT OF THE TREASURY  
 DIVISION OF TAXATION  
 PUBLIC UTILITY TAX BUREAU  
 APPROVED AS A TAX MAP PURSUANT TO THE  
 PROVISIONS OF CHAPTER 175, LAWS OF 1974  
 FOR THE DIRECTOR, DIVISION OF TAXATION  
*J. H. [Signature]*  
 DATE JAN 24 1968 SERIAL NO. 457

TAX ASSESSMENT MAP  
 CITY OF LINWOOD  
 ATLANTIC COUNTY, NEW JERSEY  
 SCALE: 1" = 100' JANUARY, 1968  
 RONALD J. PRICE, RE. & L.S.  
 NORTHFIELD, NEW JERSEY  
 N.J. LICENSE NO. 10390

SEE ADJOINING SHEET 8

SEE ADJOINING SHEET 11

ESSEX AVE  
TABOR AVE  
MONROE AVE  
EDGEWOOD AVE  
WABASH AVENUE



TAX ASSESSMENT MAPS  
CITY OF LINWOOD  
DIVISION OF TAXATION  
PUBLIC UTILITY TAX BUREAU  
FOR THE DEPARTMENT OF TREASURY  
AND FINANCE  
JAN 24 1958  
SCALE 1" = 100'  
ATLANTIC COUNTY, NEW JERSEY  
RONALD A. PRICE, P.E. & L.S.  
MORRISVILLE, NEW JERSEY

SEE ADJOINING SHEET 9

SEE ADJOINING SHEET 19

SEE ADJOINING SHEET 12

SEE ADJOINING SHEET 19

SEE ADJOINING SHEET 13

SEE ADJOINING SHEET 14

11

NEW JERSEY DEPARTMENT OF THE TREASURY  
 DIVISION OF TAXATION  
 PUBLIC UTILITY TAX BUREAU  
 APPROVED AS A TAX MAP PURSUANT TO THE  
 PROVISIONS OF CHAPTER 175, LAWS OF 1912 ETC.  
 FOR THE DIVISION OF TAXATION  
 DATE: JAN 24 1968 SERIAL NO. 457



TAX ASSESSMENT MAP  
 CITY OF LINWOOD  
 ATLANTIC COUNTY, NEW JERSEY  
 SCALE: 1" = 100' JANUARY, 1968  
 RONALD J. PRICE, P.E. & L.S.  
 NORTHFIELD, NEW JERSEY  
 N.J. LICENSE NO. 0901

SEE ADJOINING SHEET 7

SEE ADJOINING SHEET 8

SEE ADJOINING SHEET 12

SEE ADJOINING SHEET 10

263

11



TAX ASSESSMENT MAPS  
 CITY OF LINWOOD  
 ATLANTIC COUNTY, NEW JERSEY  
 SCALE 1"=100' JANUARY, 1968  
 RONALD J. PRICE, P.E. & L.S.  
 NORTHFIELD, NEW JERSEY  
 N.J. LICENSE NO. 28961

NEW JERSEY DEPARTMENT OF THE TREASURY  
 DIVISION OF TAXATION  
 APPROVED AS A TAX MAP PURSUANT TO P.L.R.S. 1957, 1958 AND 1959 FOR THE DIRECTOR'S DIVISION OF TAXATION  
 JAN 2 1968  
 157

SEE ADJOINING SHEET 19

SEE ADJOINING SHEET 20

SEE ADJOINING SHEET 10

SEE ADJOINING SHEET 11

SEE ADJOINING SHEET 14

SEE ADJOINING SHEET 20

SEE ADJOINING SHEET 11



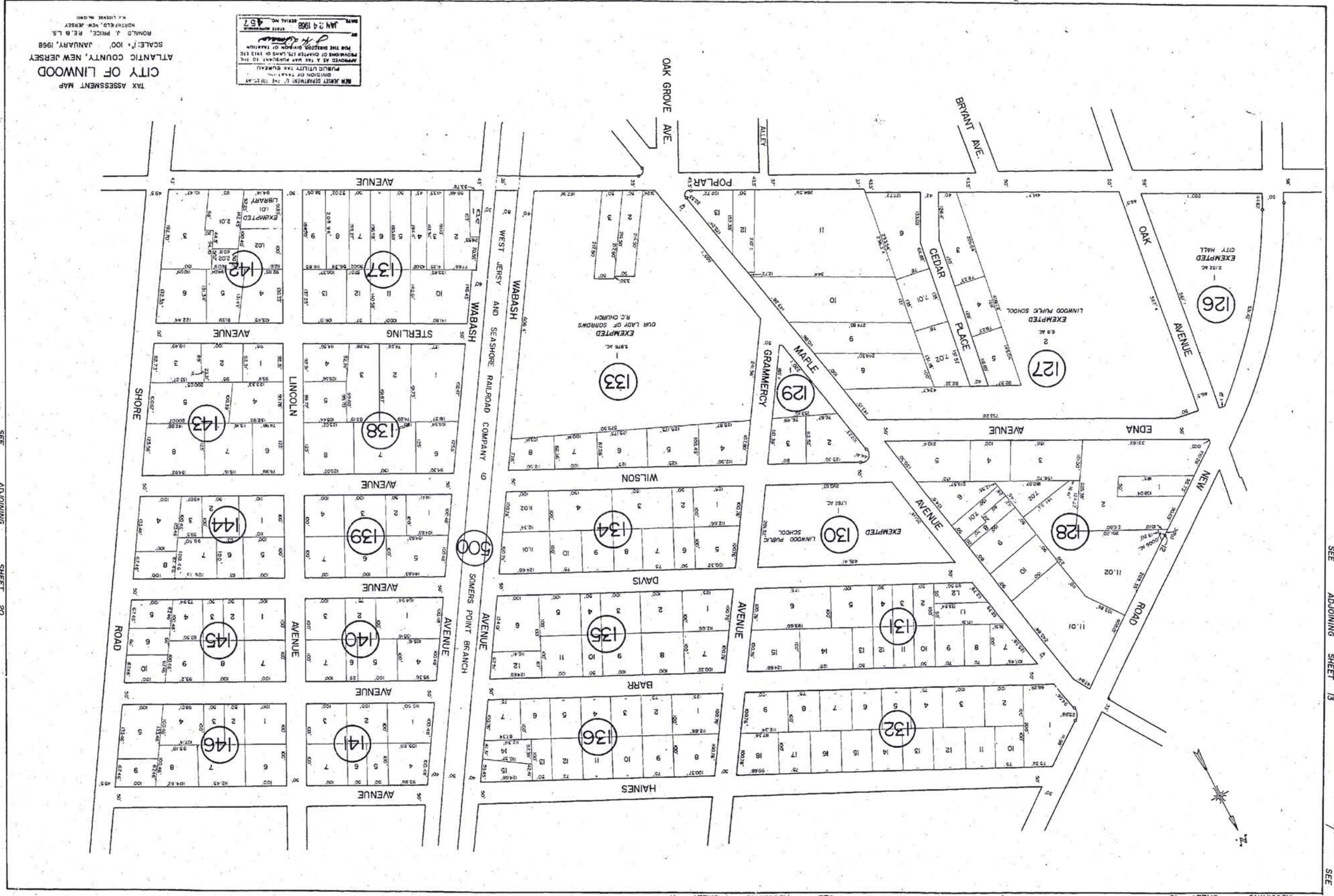
SEE ADJOINING SHEET 15

NEW JERSEY DEPARTMENT OF THE TREASURY  
 DIVISION OF TAXATION  
 PUBLIC UTILITY TAX BUREAU  
 APPROVED AS A TAX MAP PURSUANT TO THE  
 PROVISIONS OF CHAPTER 175, LAWS OF 1913, ETC.  
 FOR THE DIRECTOR, DIVISION OF TAXATION  
*J. H. [Signature]*  
 DATE JAN 24 1968 STATE SUPPLEMENTAL  
 SERIAL NO. 457

TAX ASSESSMENT MAP  
 CITY OF LINWOOD  
 ATLANTIC COUNTY, NEW JERSEY  
 SCALE: 1" = 100' JANUARY, 1968  
 RONALD J. PRICE, RE & L.S.  
 NORTHFIELD, NEW JERSEY  
 N.J. LICENSE No. 12901

SEE ADJOINING SHEET 14

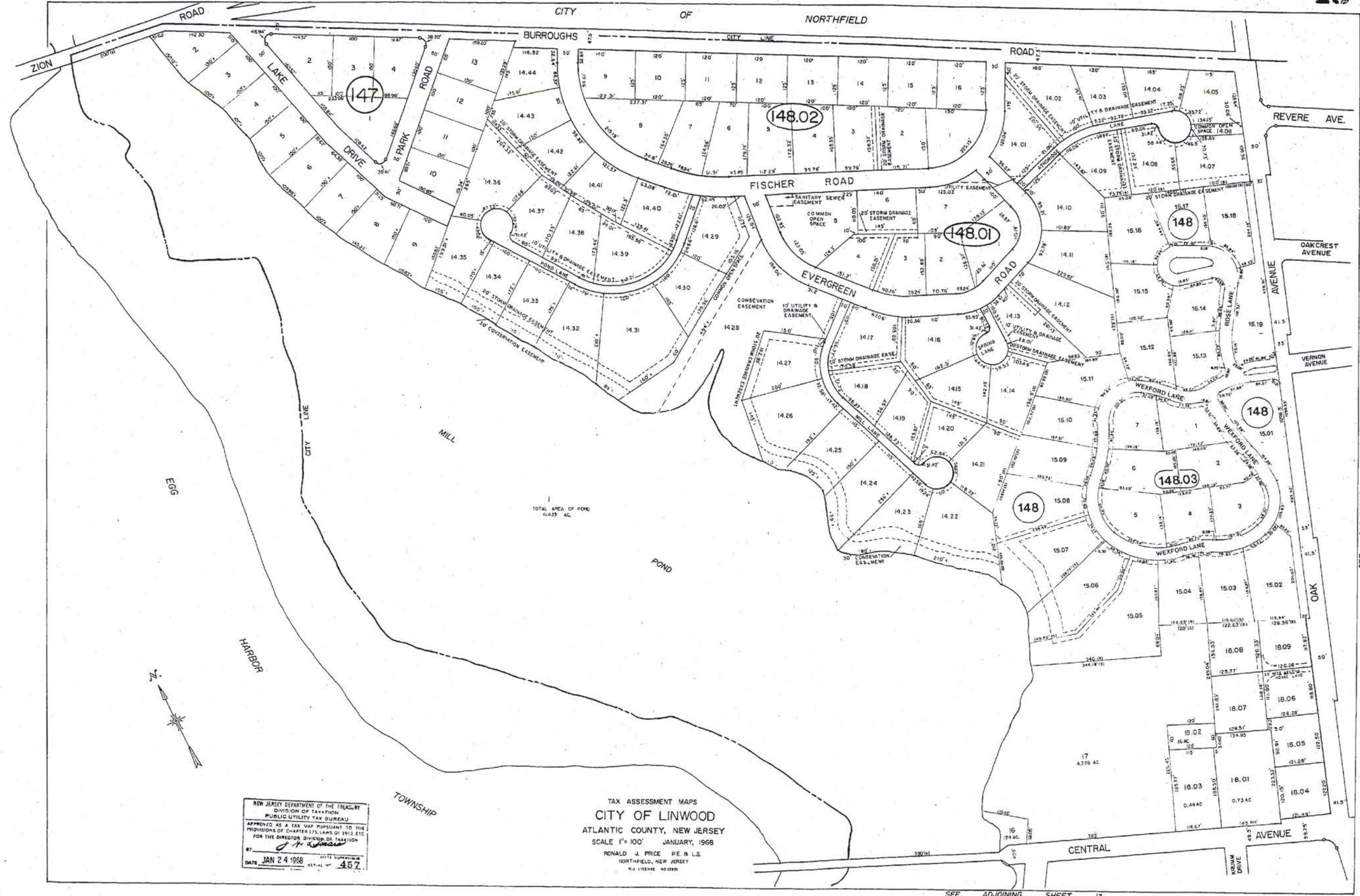
SEE ADJOINING SHEET 16



TAX ASSESSMENT MAP  
 CITY OF LINWOOD  
 ATLANTIC COUNTY, NEW JERSEY  
 JANUARY, 1968  
 SCALE: 1" = 100'  
 RONALD J. PRICE, R.E. & L.S.  
 NORTHFIELD, NEW JERSEY  
 N.J. LICENSE NO. 10301

NEW JERSEY DEPARTMENT OF TREASURY  
 DIVISION OF TAXATION  
 PUBLIC UTILITY TAX BUREAU  
 APPROVED AS A TAX MAP SUBJECT TO THE  
 PROVISIONS OF CHAPTER 125, LAWS OF 1913 ETC.  
 FOR THE DISTRICT DIVISION OF TAXATION  
 DATE: JAN 24 1968  
 SERIAL NO. 487





NEW JERSEY DEPARTMENT OF THE TREASURY  
 DIVISION OF TAXATION  
 PUBLIC UTILITY TAX BUREAU  
 APPROVED AS A TAX MAP PURSUANT TO THE  
 PROVISIONS OF CHAPTER 175, LAWS OF 1952, ETC.  
 FOR THE DIRECTOR, DIVISION OF TAXATION  
 BY: *[Signature]*  
 DATE: JAN 24 1968  
 457

TAX ASSESSMENT MAPS  
 CITY OF LINWOOD  
 ATLANTIC COUNTY, NEW JERSEY  
 SCALE 1" = 100' JANUARY, 1968  
 RONALD J. PRICE P.E. & L.S.  
 NORTHFIELD, NEW JERSEY  
 N.J. LICENSE NO. 10198

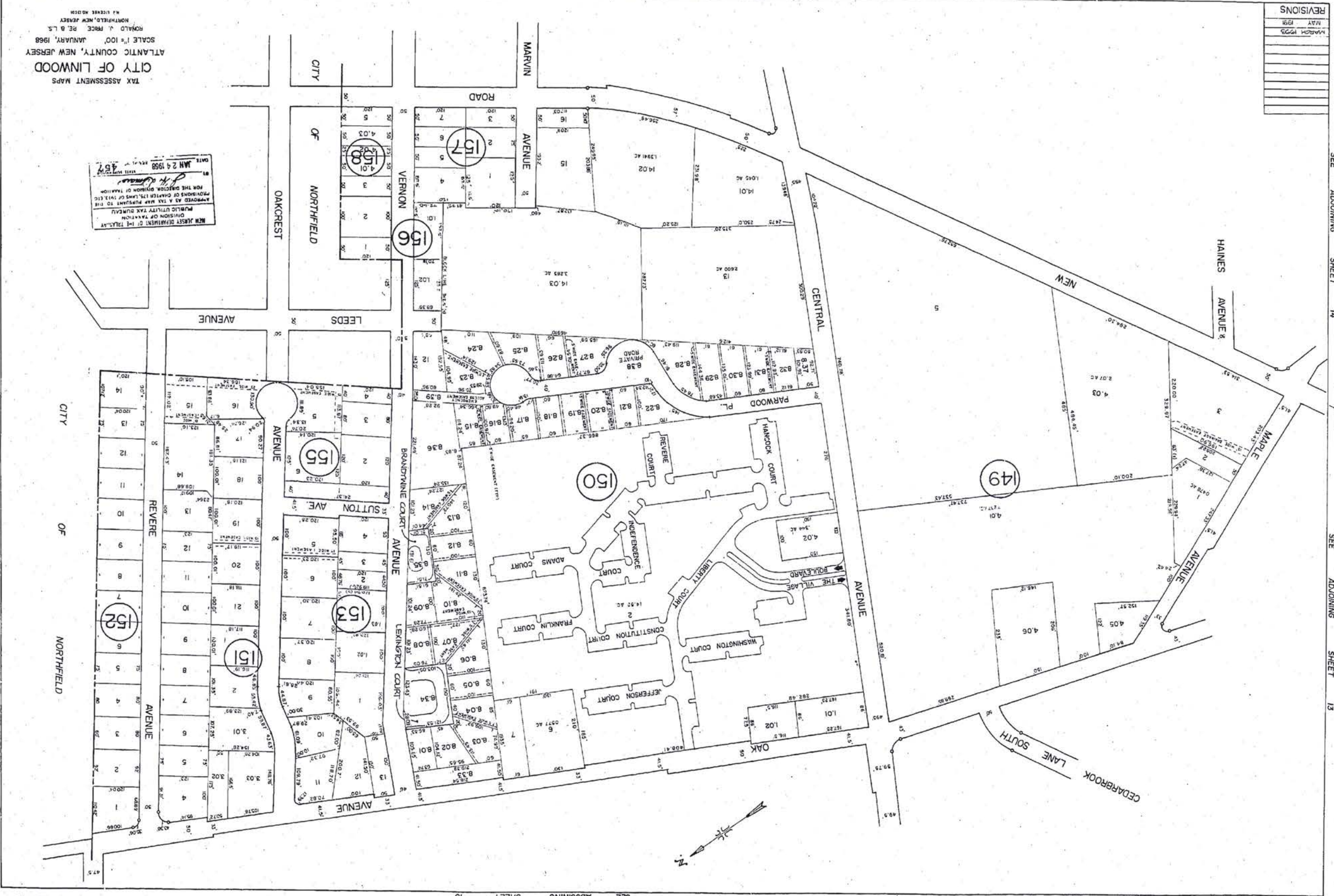
SEE ADJOINING SHEET 15

SEE ADJOINING SHEET 13

REVISIONS
MARCH 1973
MAY 1971

TAX ASSESSMENT MAPS  
 CITY OF LINWOOD  
 ATLANTIC COUNTY, NEW JERSEY  
 SCALE 1" = 100'  
 JANUARY, 1968  
 RONALD J. PRICE, P.E. & L.S.  
 NORTHFIELD, NEW JERSEY  
 M.L. LICKER, M.D.S.M.

MAN STREET DEPARTMENT OF THE TOLSON  
 DIVISION OF TAXATION  
 APPROVED AS TAX MAP PURSUANT TO THE  
 PROVISIONS OF CHAPTER 123, TITLE 18, I.C.  
 FOR THE DISTRICT DEPARTMENT OF TAXATION  
 JAN 24 1968  
 457

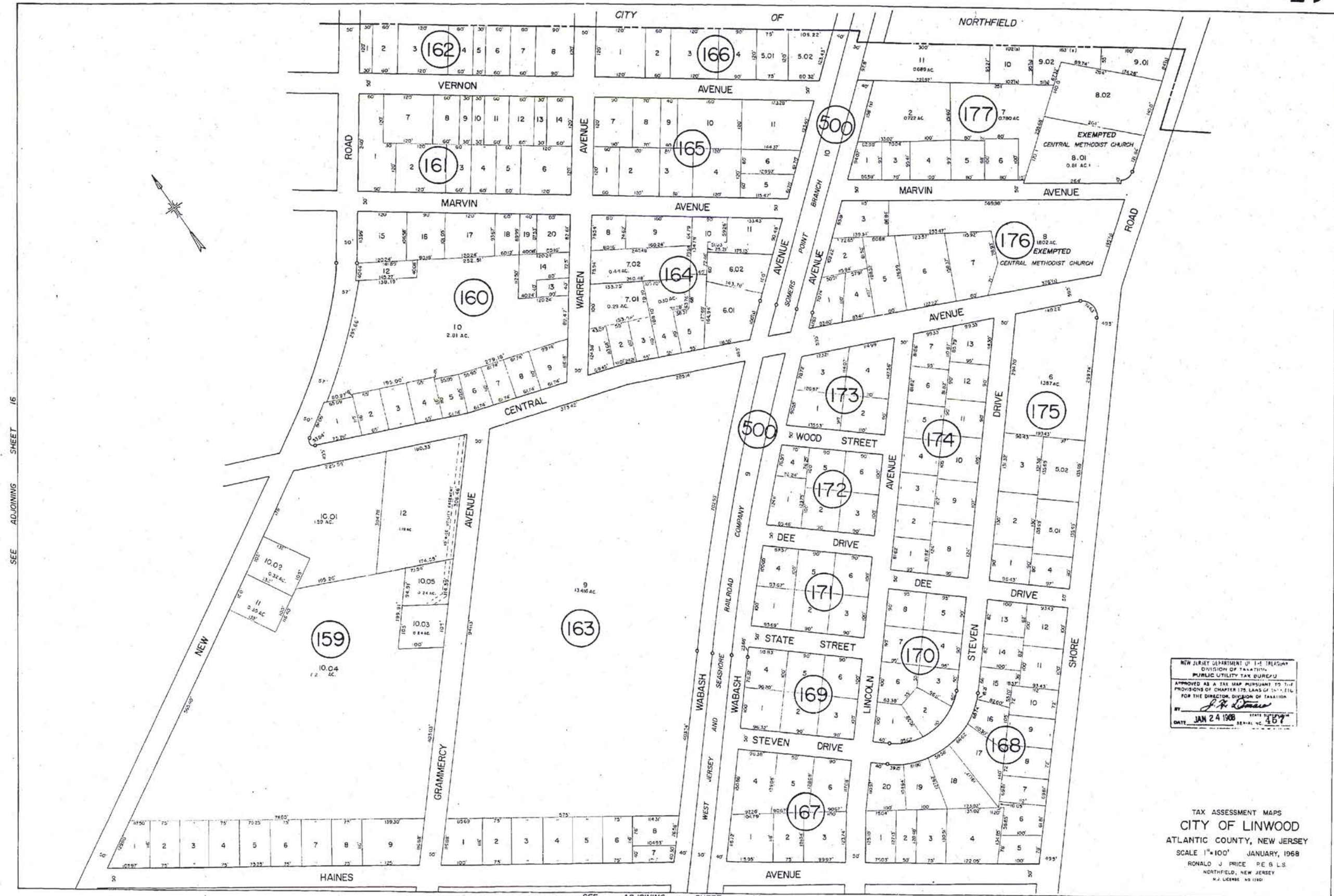


SEE ADJOINING SHEET 14  
 SEE ADJOINING SHEET 13

SEE ADJOINING SHEET 17

SEE ADJOINING SHEET 13

SEE ADJOINING SHEET 15



SEE ADJOINING SHEET 16

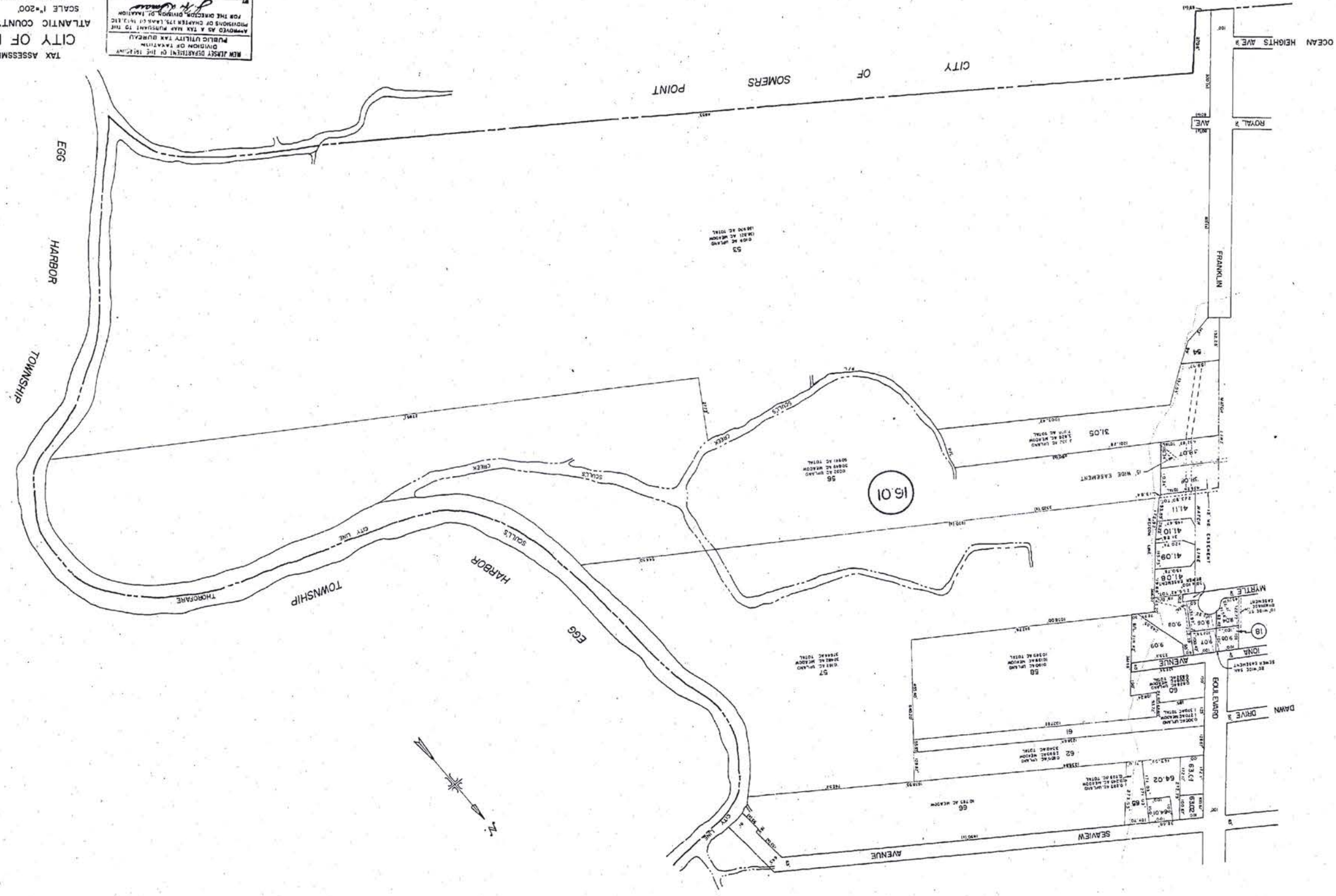
SEE ADJOINING SHEET 20

NEW JERSEY DEPARTMENT OF TREASURY  
 DIVISION OF TAXATION  
 PUBLIC UTILITY TAX BUREAU  
 APPROVED AS A TAX MAP PURSUANT TO THE  
 PROVISIONS OF CHAPTER 175, LAWS OF 1968, P.L. 116  
 FOR THE DIRECTOR, DIVISION OF TAXATION  
*J. H. [Signature]*  
 DATE: JAN 24 1968 11:41 AM '68

TAX ASSESSMENT MAPS  
 CITY OF LINWOOD  
 ATLANTIC COUNTY, NEW JERSEY  
 SCALE 1"=100' JANUARY, 1968  
 RONALD J. PRICE, P.E. & L.S.  
 NORTHFIELD, NEW JERSEY  
 N.J. LICENSE NO. 1190

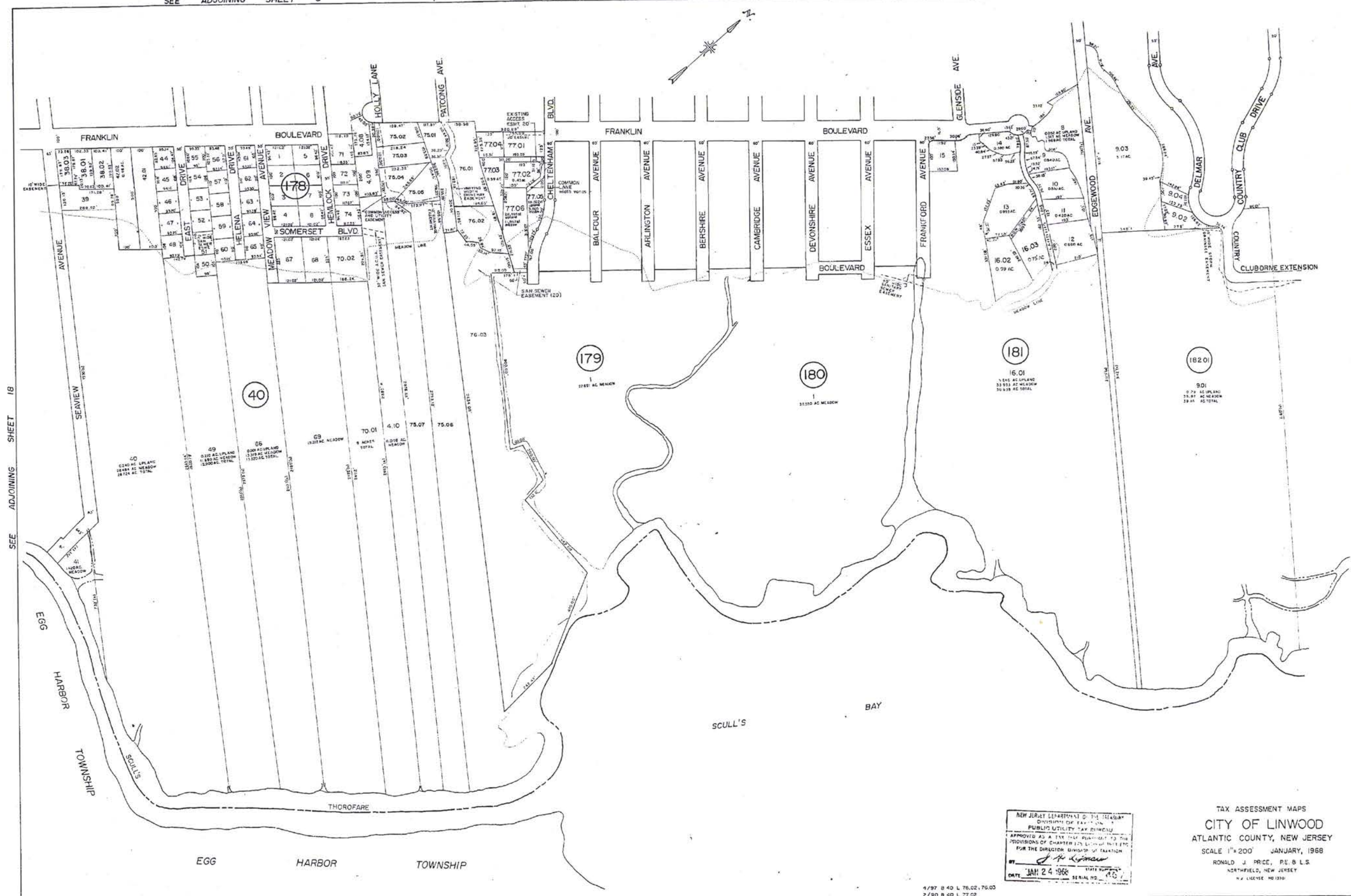
TAX ASSESSMENT MAPS  
 CITY OF LINWOOD  
 ATLANTIC COUNTY, NEW JERSEY  
 SCALE 1"=200' JANUARY 1968  
 RONALD A. PRICE P.E. & L.S.  
 NORTHFIELD, NEW JERSEY  
 N.J. LICENSE NO. 12821

NEW JERSEY DEPARTMENT OF THE TREASURY  
 DIVISION OF TAXATION  
 APPROVED AS A TAX MAP PURSUANT TO THE  
 PROVISIONS OF CHAPTER 125, LAWS OF 1952, ETC.  
 FOR THE DIRECTOR, DIVISION OF TAXATION  
*Ronald A. Price*  
 DATE: JAN 24 1968  
 STATE LICENSE NO. 487



SEE ADJOINING SHEET 3

SEE ADJOINING SHEET 6



SEE ADJOINING SHEET 18

SEE ADJOINING SHEET 20

NEW JERSEY DEPARTMENT OF THE TREASURY  
 DIVISION OF TAXATION  
 PUBLIC UTILITY TAX DIVISION  
 APPROVED AS A TAX MAP SUBJECT TO THE  
 PROVISIONS OF CHAPTER 125, L.I.C. 1975, ETC.  
 FOR THE DIRECTOR, DIVISION OF TAXATION  
 BY: *[Signature]*  
 DATE: JAN 24 1968 STATE NO. 103  
 SERIAL NO. 43

TAX ASSESSMENT MAPS  
 CITY OF LINWOOD  
 ATLANTIC COUNTY, NEW JERSEY  
 SCALE 1"=200' JANUARY, 1968  
 RONALD J. PRICE, RE. B. L.S.  
 NORTHFIELD, NEW JERSEY  
 N.J. LICENSE NO. 1330

REVISIONS  
 4/97 B 40 L 76.02, 76.03  
 2/90 B 40 L 77.02

NEW JERSEY DEPARTMENT OF TREASURY  
 DIVISION OF TAXATION  
 PUBLIC UTILITY TAX MAPS  
 CITY OF LINWOOD  
 ATLANTIC COUNTY, NEW JERSEY  
 SCALE 1"=200' JANUARY, 1968  
 RONALD J. PRICE, R.E. & L.S.  
 NORTHFIELD, NEW JERSEY  
 N.J. LICENSE NO. 0380

JAN 24 1968  
 457  
 P. M. O'NEILL  
 ENGINEER  
 APPROVED AS THE MAP ENGINEER TO THE  
 COMMISSIONER OF CHARTERS AND TO THE  
 PUBLIC UTILITY TAX MAPS

