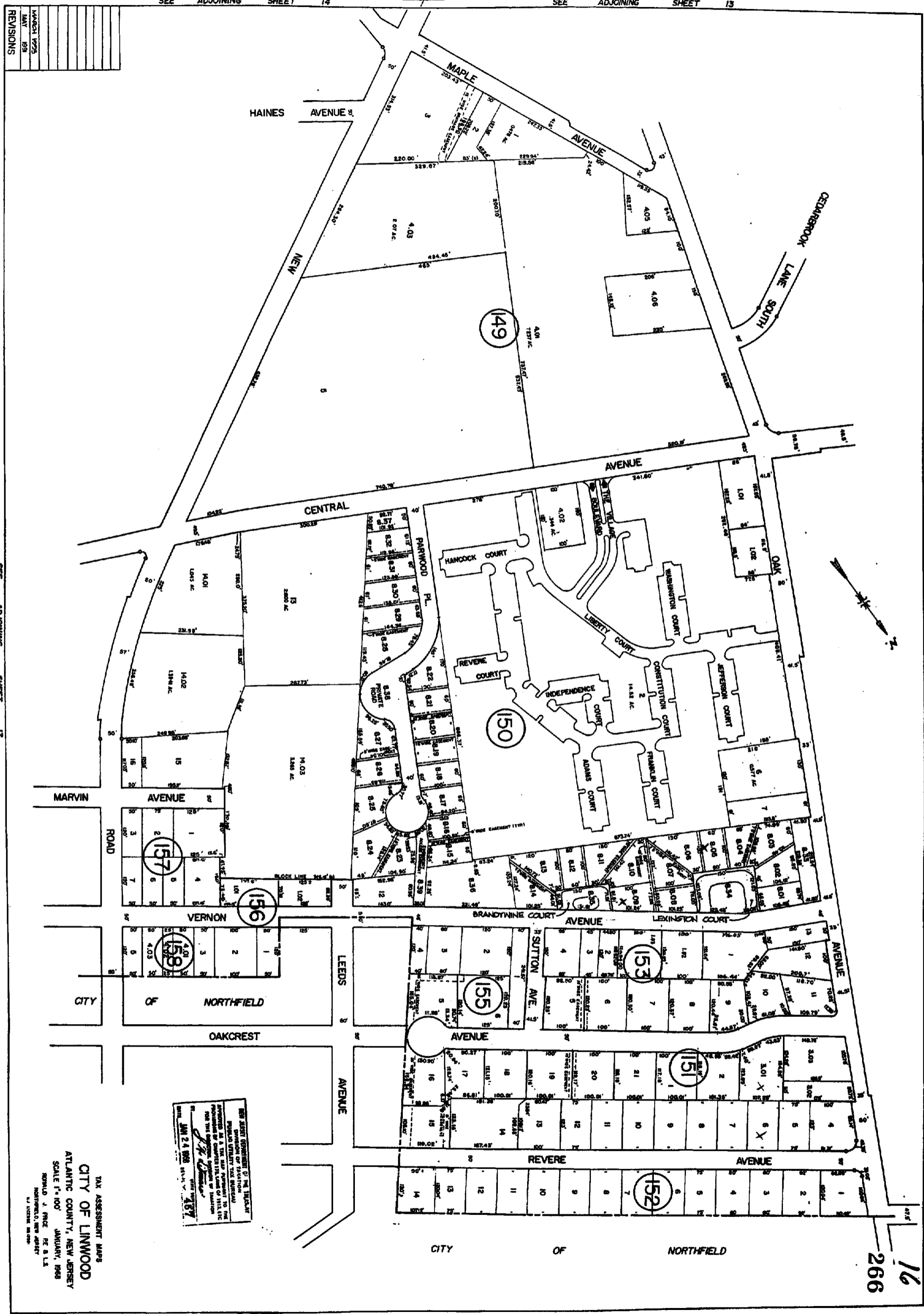


REVISIONS
MAY 59
MARCH 1958



NEW JERSEY DEPARTMENT OF TREASURY  
 DIVISION OF TAXATION  
 NOTICE: THIS MAP IS FOR INFORMATION ONLY AND DOES NOT CONSTITUTE AN OFFICIAL RECORD. THE OFFICIAL RECORD IS THE TAX MAP AS FILED IN THE OFFICE OF THE COUNTY CLERK. THIS MAP IS SUBJECT TO CHANGE WITHOUT NOTICE.

*J.P. Deane*  
 JUN 24 1958

TAX ASSESSMENT MAPS  
 CITY OF LINWOOD  
 ATLANTIC COUNTY, NEW JERSEY  
 SCALE 1" = 100' JANUARY, 1958  
 DONALD J. PRICE PE & LS  
 NORTHWOOD, NEW JERSEY  
 47 LITZEN, NEW JERSEY