

EGG HARBOR TOWNSHIP

RISLEY'S

CHANNEL

MARGATE CITY

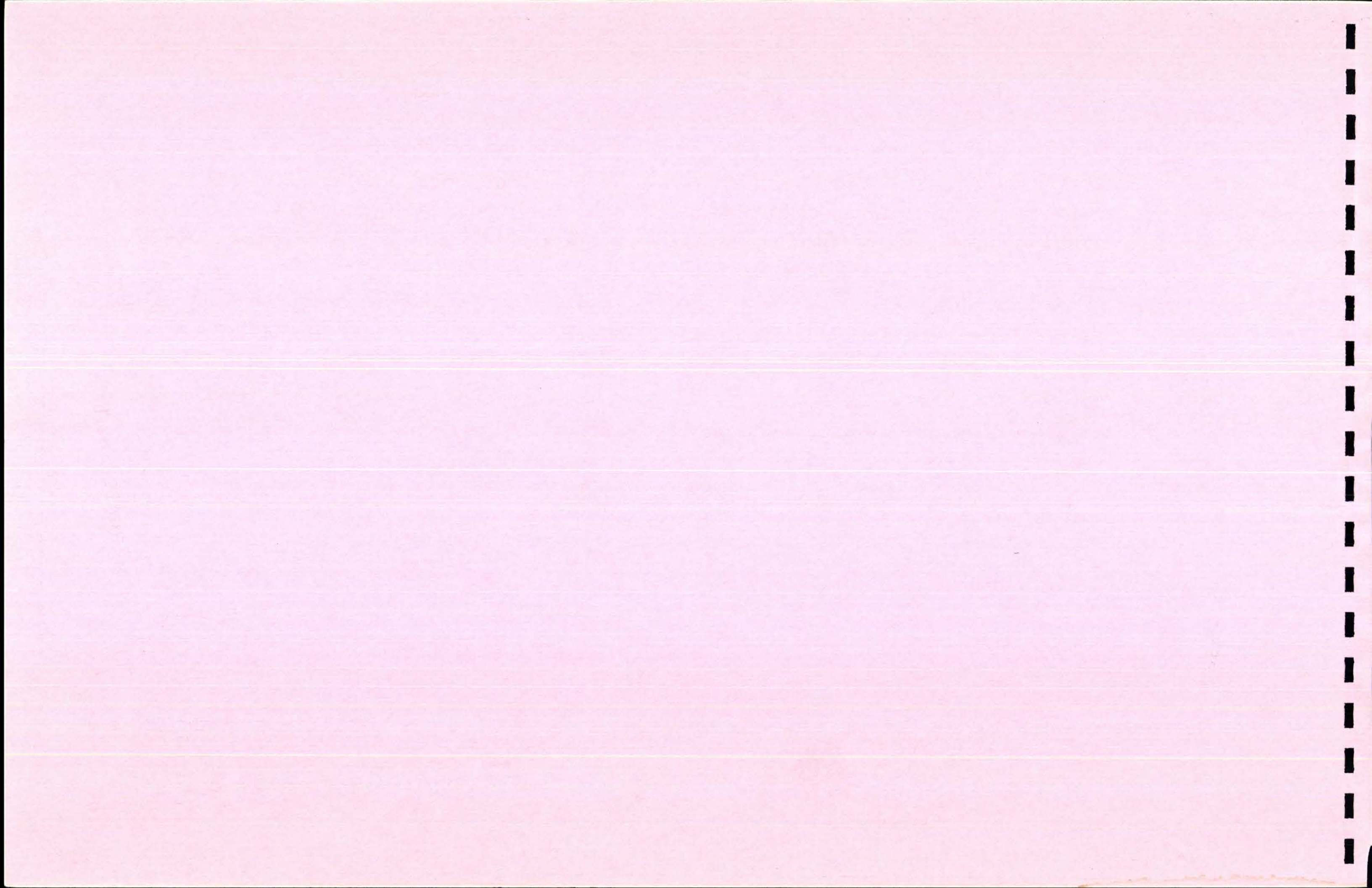
GREAT EGG HARBOR INLET

ATLANTIC

OCEAN

INDEX MAP
OF
LONGPORT BOROUGH
ATLANTIC COUNTY, NEW JERSEY

LEGEND
② ... INDICATES DETAIL SHEET NUMBER



ORIGINAL LINE OF GRANT TO JAMES LONG, FEB. 5, 1881

RISLEY'S

CHANNEL

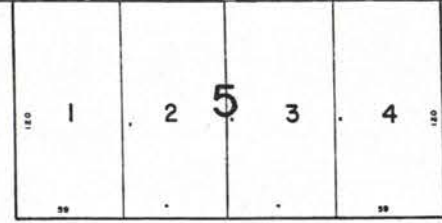
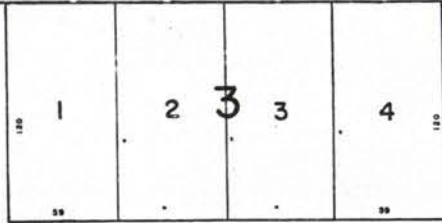
INLET

EXEMPTED BOROUGH OF LONGPORT

120

HIGH WATER LINE

BULKHEAD



ATLANTIC

AVE.

HARBOR

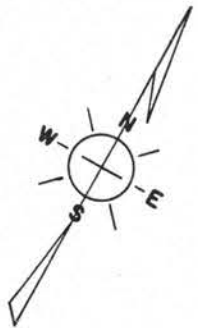
EGG

GREAT

EXISTING STONE JETTY

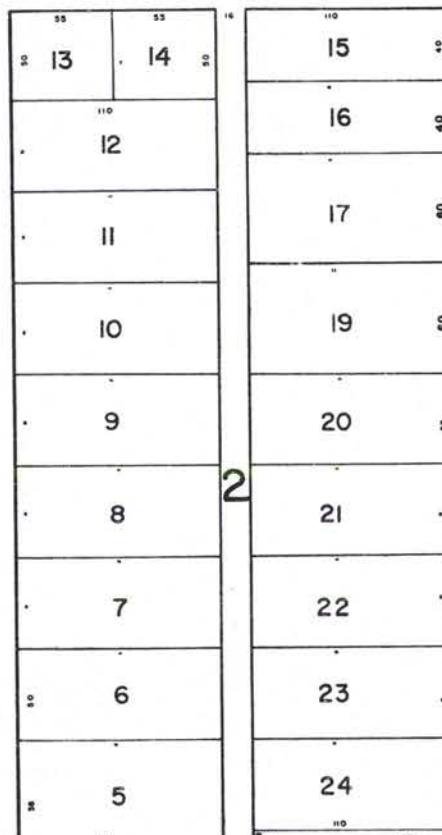
APPROX. HIGH

POINT DRIVE

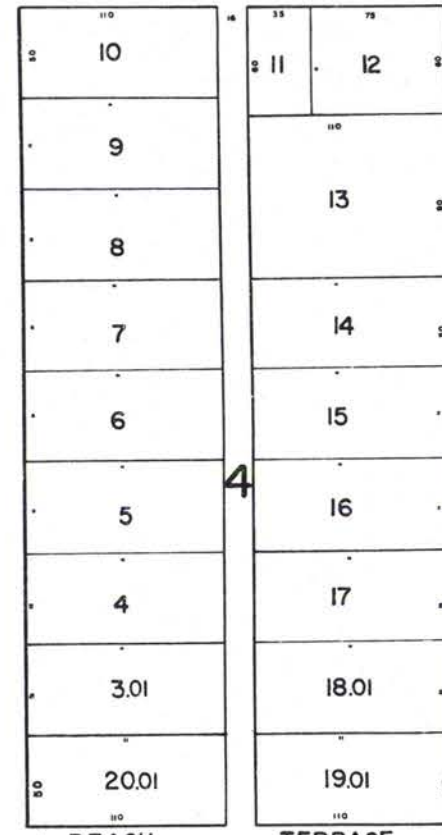


AVE.

ELEVENTH



TWELFTH



THIRTEENTH

BEACH

AVE.

HIGH WATER LINE

OCEAN

ATLANTIC

NEW JERSEY DEPARTMENT OF THE TREASURY
 DIVISION OF TAXATION
 PUBLIC UTILITY TAX BUREAU
 APPROVED AS A TAX MAP PURSUANT TO THE
 PROVISIONS OF CHAPTER 125, LAWS OF 1970,
 FOR THE DIRECTOR, DIVISION OF TAXATION.
 BY *J. Thomas Wood, Jr.*, P.E. & L.S., No. 8139
 DATE DEC. 8 1970 SERIAL No. 498

TAX MAP
 OF THE
BOROUGH OF LONGPORT
ATLANTIC COUNTY, N. J.

SCALE: 1" = 50' 1970
 REV. JAN. 1984

J. THOMAS WOOD, JR., P.E. & L.S. NO. 8139
 GEORGE E. SCHILLING L.S. NO. 16194
 421 GUARANTEE TRUST BLDG.
 ATLANTIC CITY, N.J.

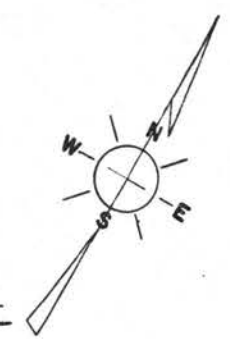
1328

ADJOINS SHEET 3

ORIGINAL LINE OF GRANT TO JAMES LONG, FEB. 5, 1881

ADJOINS SHEET 2

ADJOINS SHEET 4

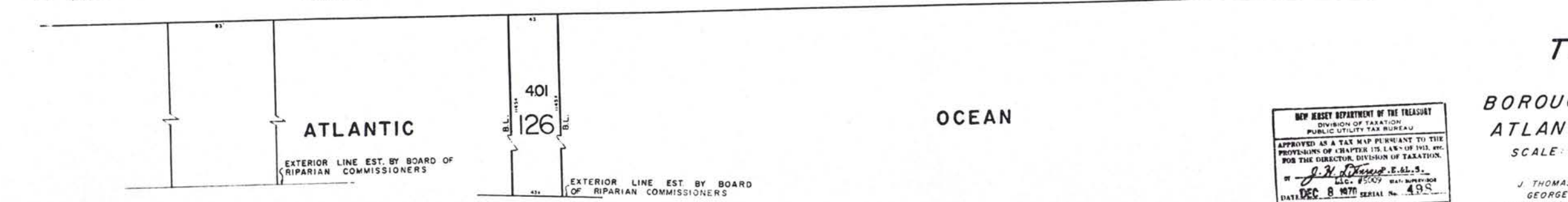
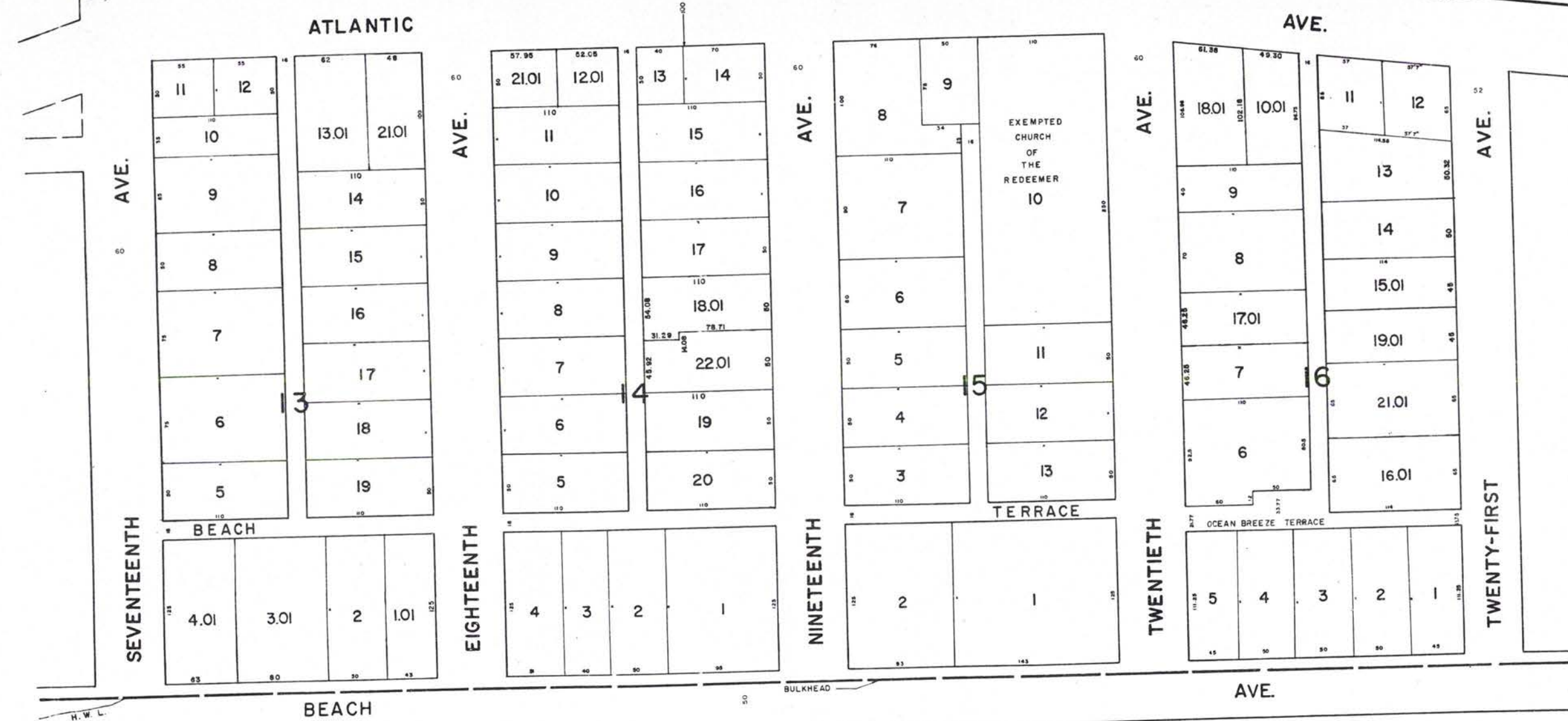
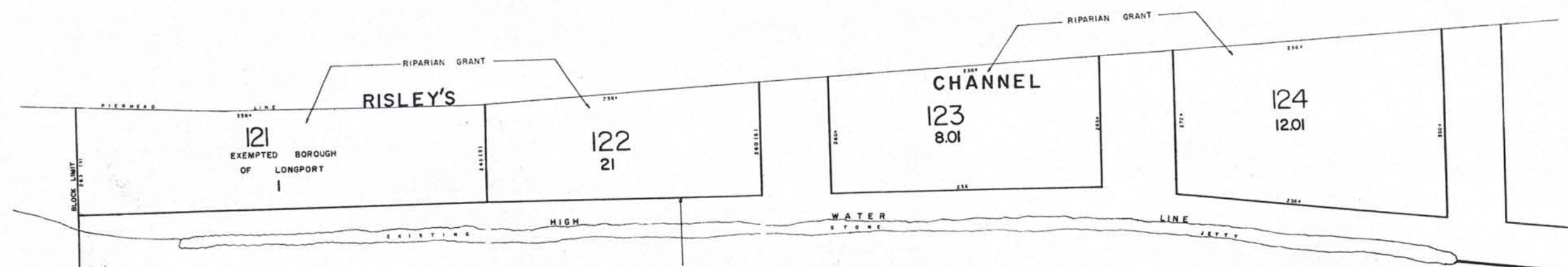


NEW JERSEY DEPARTMENT OF THE TREASURY
 DIVISION OF TAXATION
 PUBLIC UTILITY TAX BUREAU
 APPROVED AS A TAX MAP PURSUANT TO THE
 PROVISIONS OF CHAPTER 15, LAW OF 1970, AND
 FOR THE DIRECTOR, DIVISION OF TAXATION
 BY *J. H. [Signature]* E.A. 3
 LIC. 85700 TAX SUPERVISOR
 DATE DEC 8 1970 SERIAL No. 499

TAX MAP
 OF THE
BOROUGH OF LONGPORT
 ATLANTIC COUNTY, N.J.

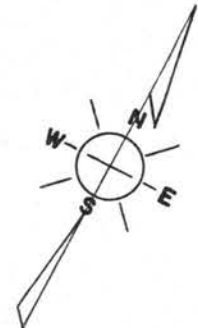
SCALE: 1" = 50'
 REV. JAN. 1984

J. THOMAS WOOD, JR., P.E. & L.S. NO. 8139
 GEORGE E. SCHILLING L.S. NO. 16198
 421 GUARANTEE TRUST BLDG.
 ATLANTIC CITY, N.J.



ADJOINS SHEET 3

ADJOINS SHEET 5



TAX MAP
OF THE
BOROUGH OF LONGPORT
ATLANTIC COUNTY, N. J.

SCALE: 1" = 50' 1970
REV. JAN. 1984

NEW JERSEY DEPARTMENT OF THE TREASURY
DIVISION OF TAXATION
PUBLIC UTILITY TAX BUREAU
APPROVED AS A TAX MAP PURSUANT TO THE
PROVISIONS OF CHAPTER 175, LAW OF 1971, AND
FOR THE DIRECTOR, DIVISION OF TAXATION.
BY *J. H. [Signature]* P.E. & L.S.
DATE: DEC. 8 1979 SERIAL NO. 499

J. THOMAS WOOD, JR., P.E. & L.S. NO. 8139
GEORGE E. SCHILLING L.S. NO. 16198
421 GUARANTEE TRUST BLDG.
ATLANTIC CITY, N. J. **1330**

86



ADJOINS SHEET 4

ADJOINS SHEET 6

NEW JERSEY DEPARTMENT OF THE TREASURY
 DIVISION OF TAXATION
 PUBLIC UTILITY TAX BUREAU
 APPROVED AS A TAX MAP PURSUANT TO THE
 PROVISIONS OF CHAPTER 173, LAWS OF 1911, BY
 FOR THE DIRECTOR, DIVISION OF TAXATION
 BY *[Signature]* E.S.L.S.
 LIC. #5009 DATE APPROVED
 DATE DEC 8 1970 SERIAL No. 499

TAX MAP
 OF THE
BOROUGH OF LONGPORT
ATLANTIC COUNTY, N. J.

SCALE: 1" = 50'
 REV JAN. 1984

J. THOMAS WOOD, JR., P.E. & L.S. NO. 8139
 GEORGE E. SCHILLING L.S. NO. 16198
 421 GUARANTEE TRUST BLDG.
 ATLANTIC CITY, N.J.

ADJOINS SHEET 7



ADJOINS SHEET 5

ADJOINS SHEET 8

101
31.01

NEW JERSEY DEPARTMENT OF THE TREASURY
DIVISION OF TAXATION
PUBLIC UTILITY TAX BUREAU
APPROVED AS A TAX MAP PURSUANT TO THE
PROVISIONS OF CHAPTER 175, LAWS OF 1983, BY
FOR THE DIRECTOR, DIVISION OF TAXATION.
BY *J. H. Schilling* E.A.L.S.
DATE DEC 8 1970 SERIAL No. 498

TAX MAP
OF THE
BOROUGH OF LONGPORT
ATLANTIC COUNTY, N.J.
SCALE: 1" = 50'
1970
REV. JAN. 1984
J. THOMAS WOOD, JR., P.E. B.L.S. NO. 8139
GEORGE E. SCHILLING, L.S. NO. 16190
421 GUARANTEE TRUST BLDG.
ATLANTIC CITY, N.J. **1332**



1333

NEW JERSEY DEPARTMENT OF THE TREASURY
 DIVISION OF TAXATION
 PUBLIC UTILITY TAX BUREAU
 APPROVED AS A TAX MAP PURSUANT TO THE
 PROVISIONS OF CHAPTER 175, LAWS OF 1913, ETC.
 FOR THE DIRECTOR, DIVISION OF TAXATION.
 BY: *J. H. [Signature]* P.E.M.S.
 LIC. #5009 DATE SURVEY 808
 DATE DEC 8 1970 SERIAL No. 499

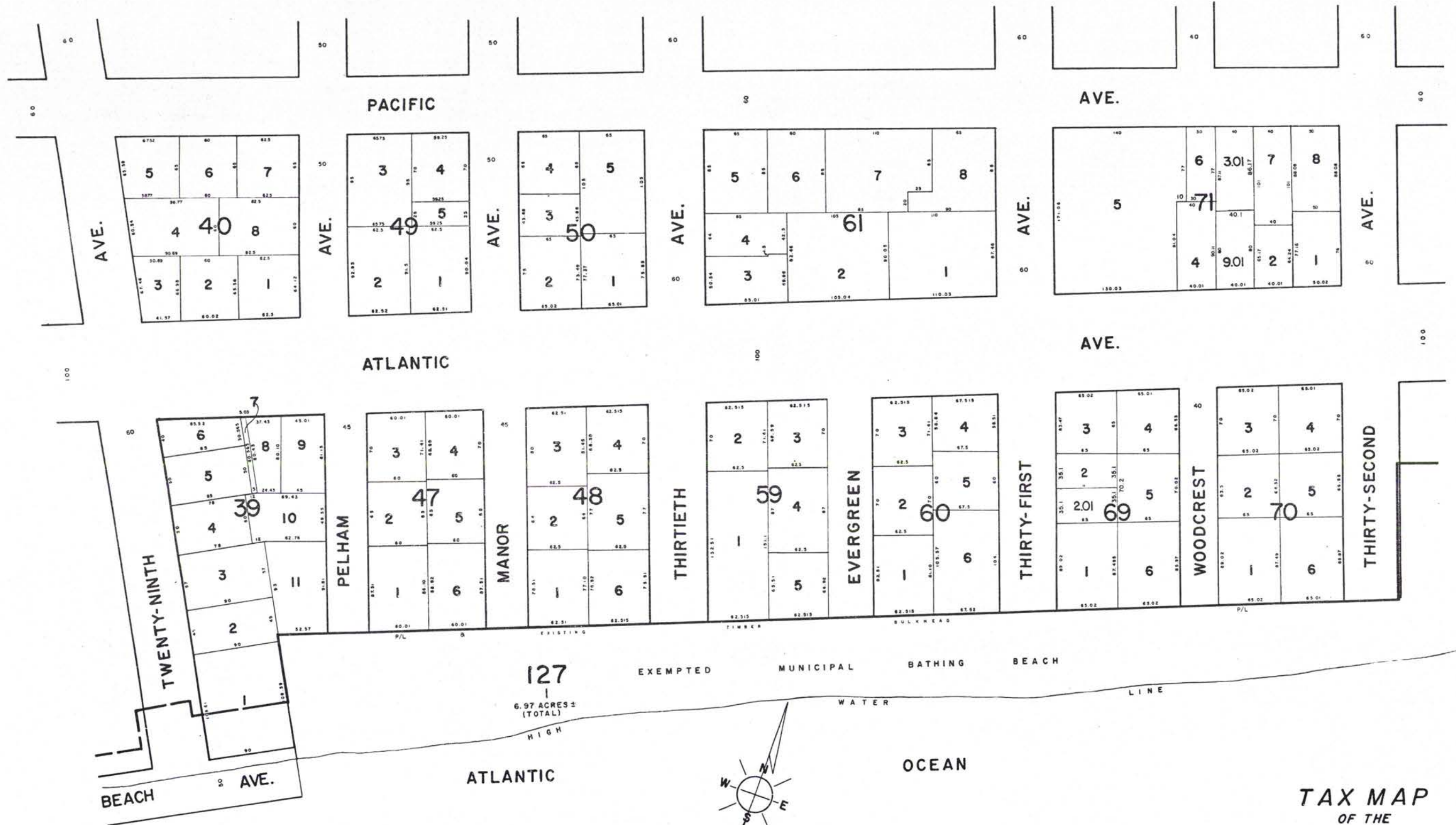
TAX MAP
 OF THE
BOROUGH OF LONGPORT
ATLANTIC COUNTY, N.J.

SCALE: 1" = 50' 1970
 REV. JAN. 1984

J. THOMAS WOOD, JR., P.E. & L.S. NO. 8139
 GEORGE E. SCHILLING, L.S. NO. 16198
 421 GUARANTEE TRUST BLDG.
 ATLANTIC CITY, N.J.

ADJOINS SHEET 6

ADJOINS SHEET 12



TAX MAP
OF THE
BOROUGH OF LONGPORT
ATLANTIC COUNTY, N.J.

SCALE: 1" = 50' 1970
REV. JAN. 1984

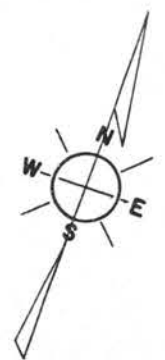
NEW JERSEY DEPARTMENT OF THE TREASURY
DIVISION OF TAXATION
PUBLIC UTILITY TAX BUREAU
APPROVED AS A TAX MAP PURSUANT TO THE
PROVISIONS OF CHAPTER 175, LAWS OF 1961, ETC.
FOR THE DIRECTOR, DIVISION OF TAXATION.
BY *J. H. [Signature]*
DATE DEC 8 1970 SERIAL No. 473

J. THOMAS WOOD, JR., PE B L.S. NO. 8139
GEORGE E. SCHILLING, L.S. NO. 16198
421 GUARANTEE TRUST BLDG.
ATLANTIC CITY, N.J.

1334

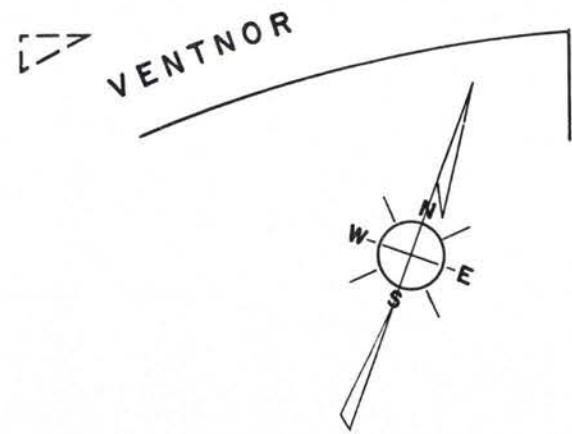
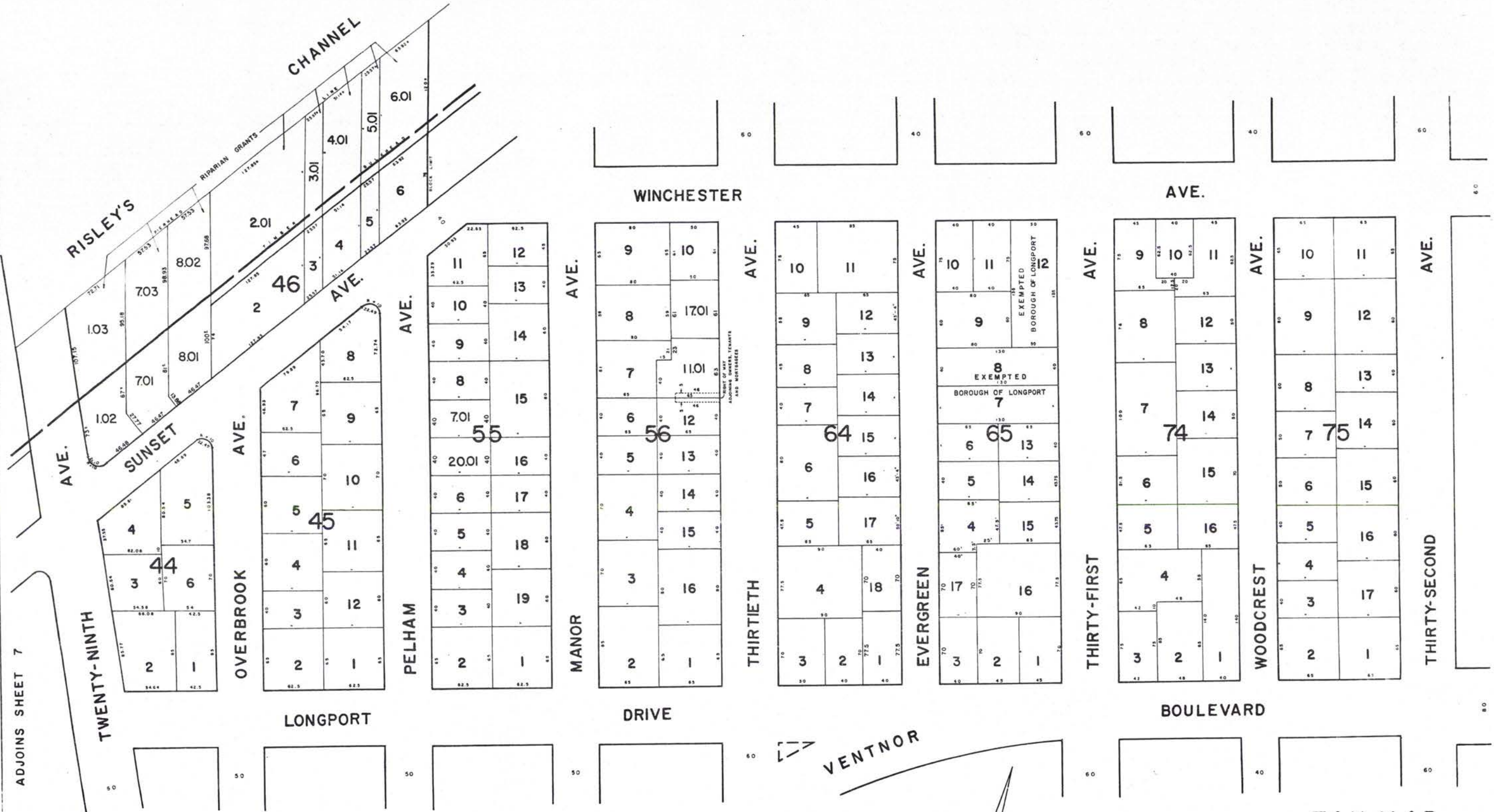


1335



NEW JERSEY DEPARTMENT OF THE TREASURY
 DIVISION OF TAXATION
 PUBLIC UTILITY TAX BUREAU
 APPROVED AS A TAX MAP PURSUANT TO THE
 PROVISIONS OF CHAPTER 175, LAWS OF 1913, ETC.
 FOR THE DIRECTOR, DIVISION OF TAXATION.
 BY *J. H. [Signature]* P.E., L.S.
 DATE DEC. 8 1970 SERIAL No. 19

TAX MAP
 OF THE
BOROUGH OF LONGPORT
ATLANTIC COUNTY, N.J.
 SCALE: 1" = 50'
 REV. JAN. 1984
 J. THOMAS WOOD, JR., P.E., L.S. NO. 8139
 GEORGE E. SCHILLING, L.S. NO. 16198
 421 GUARANTEE TRUST BLDG.
 ATLANTIC CITY, N.J.

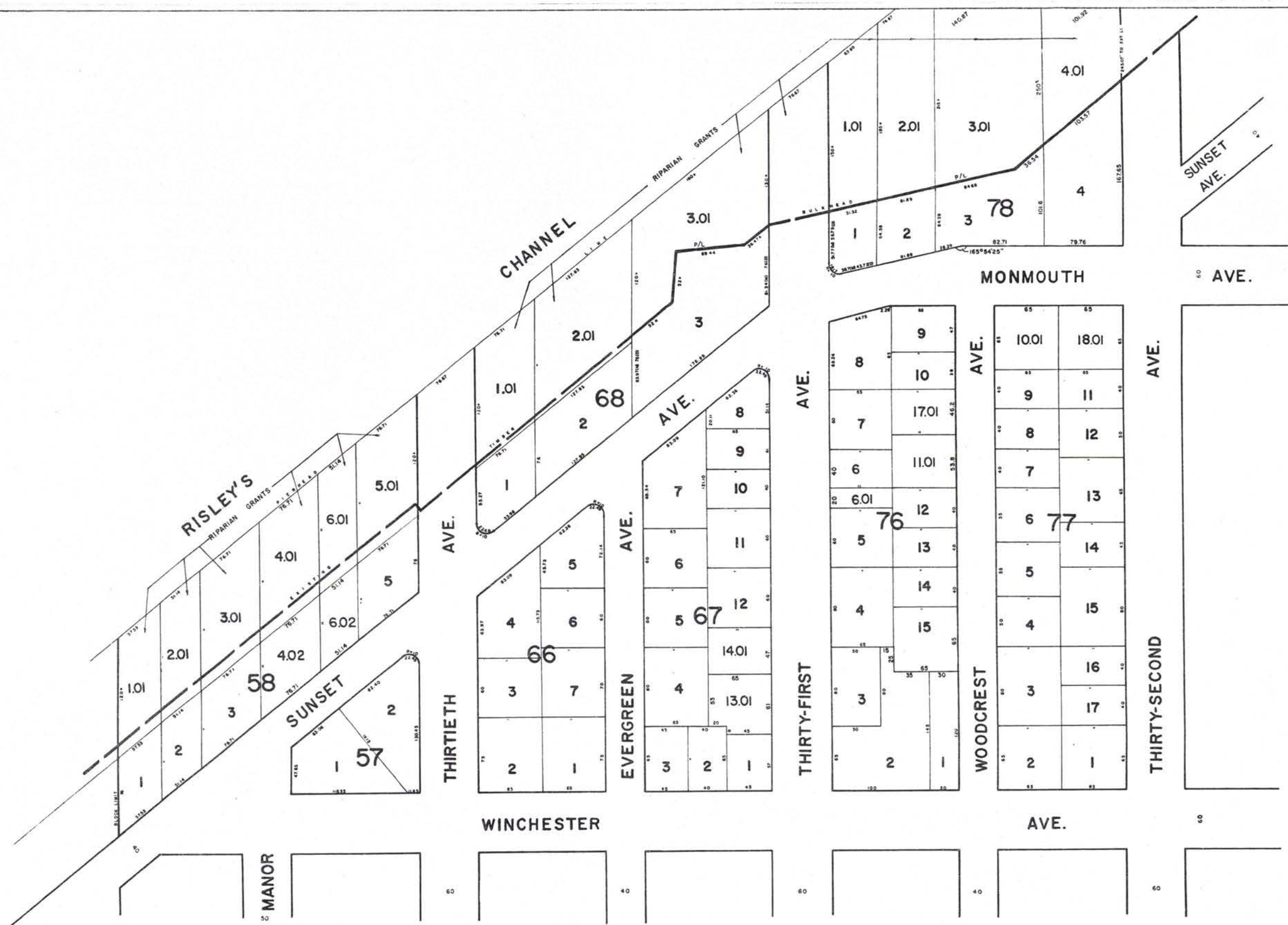


NEW JERSEY DEPARTMENT OF THE TREASURY
 DIVISION OF TAXATION
 PUBLIC UTILITY TAX BUREAU
 APPROVED AS A TAX MAP PURSUANT TO THE
 PROVISIONS OF CHAPTER 125, LAW OF 1912, ETC.
 FOR THE DIRECTOR, DIVISION OF TAXATION.
 BY *J. H. Thomas, E.S.L.S.*
 LIC. #5009 SEAL SUPERVISOR
 DATE: DEC 8 1977 SERIAL No. 499

TAX MAP
 OF THE
BOROUGH OF LONGPORT
ATLANTIC COUNTY, N. J.
 SCALE: 1" = 50'
 1970
 REV. JAN. 1984
 J. THOMAS WOOD, JR., P.E. & L.S. NO. 8139
 GEORGE E. SCHILLING, L.S. NO. 16198
 421 GUARANTEE TRUST BLDG.
 ATLANTIC CITY, N.J.

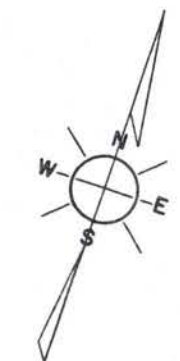
86

1336



ADJOINS SHEET 16

ADJOINS SHEET 15



TAX MAP
 OF THE
BOROUGH OF LONGPORT
ATLANTIC COUNTY, N.J.

NEW JERSEY DEPARTMENT OF THE TREASURY
 DIVISION OF TAXATION
 PUBLIC UTILITY TAX BUREAU
 APPROVED AS A TAX MAP PURSUANT TO THE
 PROVISIONS OF CHAPTER 123, LAWS OF 1983, AND
 FOR THE DIRECTOR, DIVISION OF TAXATION.
 BY *[Signature]* P.E. & L.S.
 L.L.C. 85-1551 REAL BUREAU BOB
 DATE DEC 8 1979 SERIAL No. 433

SCALE: 1" = 50'
 REV. JAN. 1984
 J. THOMAS WOOD, JR., P.E. & L.S. NO. 8139
 GEORGE E. SCHILLING, L.S. NO. 16198
 421 GUARANTEE TRUST BLDG.
 ATLANTIC CITY, N.J.

ADJOINS SHEET 8



TAX MAP
 OF THE
BOROUGH OF LONGPORT
 ATLANTIC COUNTY, N.J.

SCALE: 1" = 50'
 REV. JAN. 1984

NEW JERSEY DEPARTMENT OF THE TREASURY
 DIVISION OF TAXATION
 PUBLIC UTILITY TAX BUREAU
 APPROVED AS A TAX MAP PURSUANT TO THE
 PROVISIONS OF CHAPTER 125, LAWS OF 1981, ETC.
 FOR THE DIRECTOR, DIVISION OF TAXATION.
 BY *J. H. d. [Signature]* S. N. S.
 DATE DEC 8 1979 SERIAL No. 498

J. THOMAS WOOD, JR., P.E. B.L.S. NO. 8130
 GEORGE E. SCHILLING L.S. NO. 16190
 421 GUARANTEE TRUST BLDG.
 ATLANTIC CITY, N.J. **1338**

ADJOINS SHEET 9



TAX MAP
 OF THE
BOROUGH OF LONGPORT
ATLANTIC COUNTY, N. J.

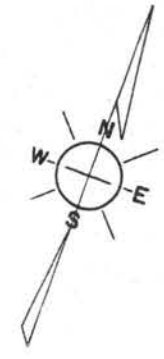
SCALE: 1" = 50' 1970
 REV. JAN. 1984

J. THOMAS WOOD, JR., P.E. & L.S. NO. 8139
 GEORGE E. SCHILLING, L.S. NO. 16198
 421 GUARANTEE TRUST BLDG.
 ATLANTIC CITY, N. J.

NEW JERSEY DEPARTMENT OF THE TREASURY
 DIVISION OF TAXATION
 PUBLIC UTILITY TAX BUREAU
 APPROVED AS A TAX MAP PURSUANT TO THE
 PROVISIONS OF CHAPTER 15, LAWS OF 1911, ET
 FOR THE DIRECTOR, DIVISION OF TAXATION.
 BY *J. H. [Signature]*, S.E.L.S.
 DEC. 8 1970 SERIAL No. 493

86

ADJOINS SHEET 10



NEW JERSEY DEPARTMENT OF THE TREASURY
 DIVISION OF TAXATION
 PUBLIC UTILITY TAX BUREAU
 APPROVED AS A TAX MAP PURSUANT TO THE
 PROVISIONS OF CHAPTER 123, L.A.S. 1970, P.L.
 FOR THE DIRECTOR, DIVISION OF TAXATION.
 BY *J. H. [Signature]* S.A.S.
 DATE DEC 8 1970 SERIAL No. 439

TAX MAP
 OF THE
BOROUGH OF LONGPORT
ATLANTIC COUNTY, N.J.

SCALE: 1" = 50'
 1970
 REV. JAN. 1984

J. THOMAS WOOD, JR., P.E. & L.S. NO. 8139
 GEORGE E. SCHILLING, L.S. NO. 16198
 421 GUARANTEE TRUST BLDG.
 ATLANTIC CITY, N.J.

1340

MONMOUTH

AVE.

WINCHESTER

AVE.

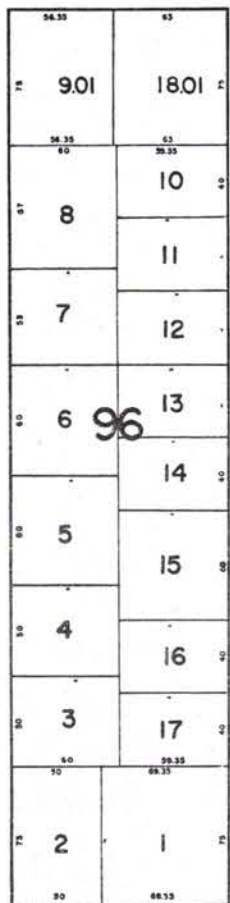
THIRTY-SECOND AVE.



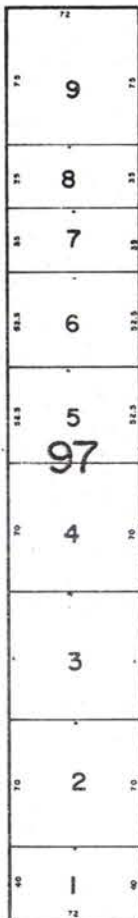
YARMOUTH AVE.



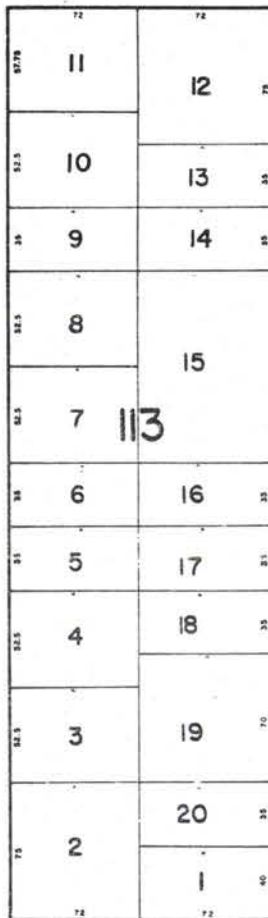
THIRTY-THIRD AVE.



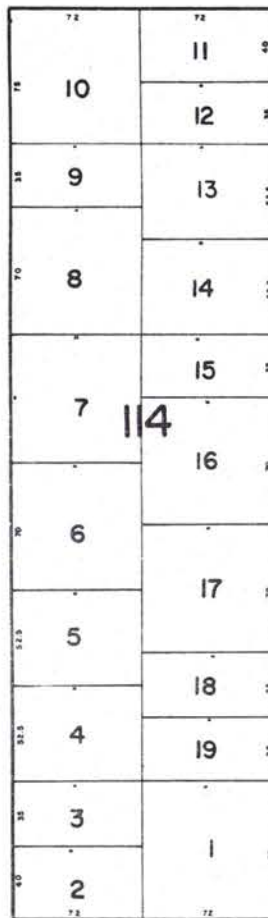
COLGATE AVE.



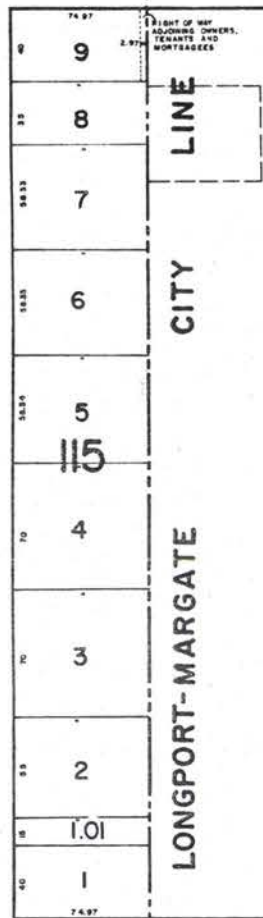
THIRTY-FOURTH AVE.



THIRTY-FIFTH AVE.



THIRTY-SIXTH AVE.



LINE

CITY

LONGPORT-MARGATE



ADJOINS SHEET 11

1341

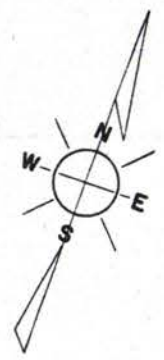
ADJOINS SHEET 14

NEW JERSEY DEPARTMENT OF THE TREASURY
 DIVISION OF TAXATION
 PUBLIC UTILITY TAX BUREAU
 APPROVED AS A TAX MAP PURSUANT TO THE
 PROVISIONS OF CHAPTER 15, LAWS OF 1963, AND
 FOR THE DIRECTOR, DIVISION OF TAXATION.
 BY *J. H. Dwyer*, S.E.L.S.
 LIC. #5049 REAL ESTATE BROKER
 DATE _____ SERIAL No. _____

TAX MAP
 OF THE
BOROUGH OF LONGPORT
ATLANTIC COUNTY, N.J.

SCALE: 1" = 50' 1970
 REV. JAN. 1984

J. THOMAS WOOD, JR., P.E. & L.S. NO. 8139
 GEORGE E. SCHILLING, L.S. NO. 16198
 421 GUARANTEE TRUST BLDG.
 ATLANTIC CITY, N.J.



CHANNEL

RISLEY'S

ADJOINS SHEET II



ADJOINS SHEET 15

TAX MAP
 OF THE
BOROUGH OF LONGPORT
ATLANTIC COUNTY, N.J.

SCALE: 1" = 50'
 REV. JAN. 1984

NEW JERSEY DEPARTMENT OF THE TREASURY
 DIVISION OF TAXATION
 PUBLIC UTILITY TAX BUREAU
 APPROVED AS A TAX MAP PURSUANT TO THE
 PROVISIONS OF CHAPTER 172, L. 1984, N.J.S.C.
 FOR THE DIVISION OF TAXATION
 DATE DEC 8 1979 SERIAL No. 493

J. THOMAS WOOD, JR., P.E. & L.S. NO. 839
 GEORGE E. SCHILLING, L.S. NO. 161
 421 GUARANTEE TRUST BLDG.
 ATLANTIC CITY, N.J. **1342**

