

EGG HARBOR TOWNSHIP

RISLEY'S

CHANNEL

MARGATE CITY

GREAT EGG HARBOR INLET

ATLANTIC

OCEAN

LEGEND

② ... INDICATES MAP PAGE NUMBER

INDEX MAP OF
LONGPORT BOROUGH
 ATLANTIC COUNTY, NEW JERSEY

NOTES

274



ADJOINS SHEET 3

ADJOINS SHEET 5

277

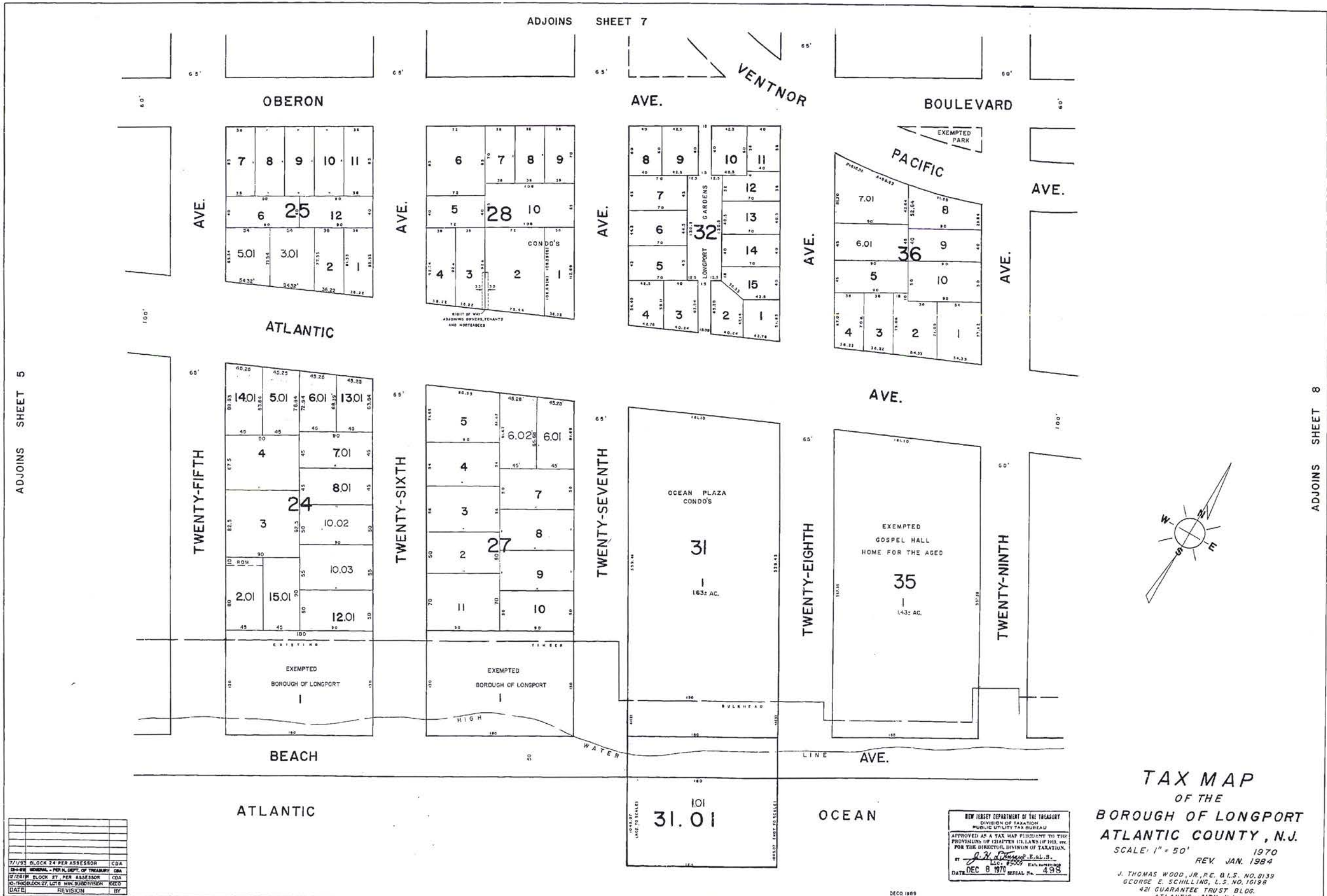
| | | |
|----------|--|------|
| 7/1/93 | BLOCK 16 PER ASSESSOR | CDA |
| 12/1/92 | GENERAL PER A. DEPT. OF TREASURY | COM |
| 12/24/91 | BLOCK 15, PER ASSESSOR | FCB |
| 12/24/91 | BLOCK 15, PER ASSESSOR | CDA |
| 10-9-90 | BLOCK 15, LOT 10 MINOR SUBDIVISION | DECO |
| 10-8-90 | BLOCK 15, LOT 1 MINOR SUBDIVISION | DECO |
| 10-5-90 | BLOCK 14, LOT 18 CORRECT DIMENSION | DECO |
| 10-5-90 | BLOCK 14, LOT 1, MINOR SUBDIVISION | DECO |
| 10-5-90 | BLOCK 13, LOT 13, 21, 21 OF MIN. SUBD. | DECO |
| DATE | REVISION | BY |

EXTERIOR LINE EST. BY BOARD OF RIPARIAN COMMISSIONERS

EXTERIOR LINE EST. BY BOARD OF RIPARIAN COMMISSIONERS

NEW JERSEY DEPARTMENT OF THE TREASURY
 DIVISION OF TAXATION
 PUBLIC UTILITY TAX BUREAU
 APPROVED AS A TAX MAP PURSUANT TO THE
 PROVISIONS OF CHAPTER 116, LAND OF 1913, P.M.C.
 FOR THE DIRECTOR, DIVISION OF TAXATION.
J. H. Schilling, R.L.S.
 DEC 8 1970 SERIAL No. 498

TAX MAP
 OF THE
BOROUGH OF LONGPORT
ATLANTIC COUNTY, N.J.
 SCALE: 1" = 50' 1970
 REV JAN. 1984
 J. THOMAS WOOD, JR., R.E. & L.S. NO. 8139
 GEORGE E. SCHILLING, L.S. NO. 16158
 421 GUARANTEE TRUST BLDG.
 ATLANTIC CITY, N.J.



ADJOINS SHEET 5

ADJOINS SHEET 8

279

| DATE | REVISION | BY |
|---------|-----------------------------------|-----|
| 7/1/93 | BLOCK 24 PER ASSESSOR | CDA |
| 12-4-93 | GENERAL - PERM. DEPT. OF TREASURY | CDA |
| 7/26/94 | BLOCK 27 PER ASSESSOR | CDA |
| 10-7-94 | BLOCK 27 LOTS WITH SUBDIVISION | KEO |

NEW JERSEY DEPARTMENT OF THE TREASURY
 DIVISION OF TAXATION
 PUBLIC UTILITY TAX BUREAU
 APPROVED AS A TAX MAP PURSUANT TO THE
 PROVISIONS OF CHAPTER 116, LAWS OF 1915, ETC.
 FOR THE DIRECTOR, DIVISION OF TAXATION.
 BY *J. J. [Signature]* E.A.L.S.
 DATE DEC 8 1970 SERIAL No. 498

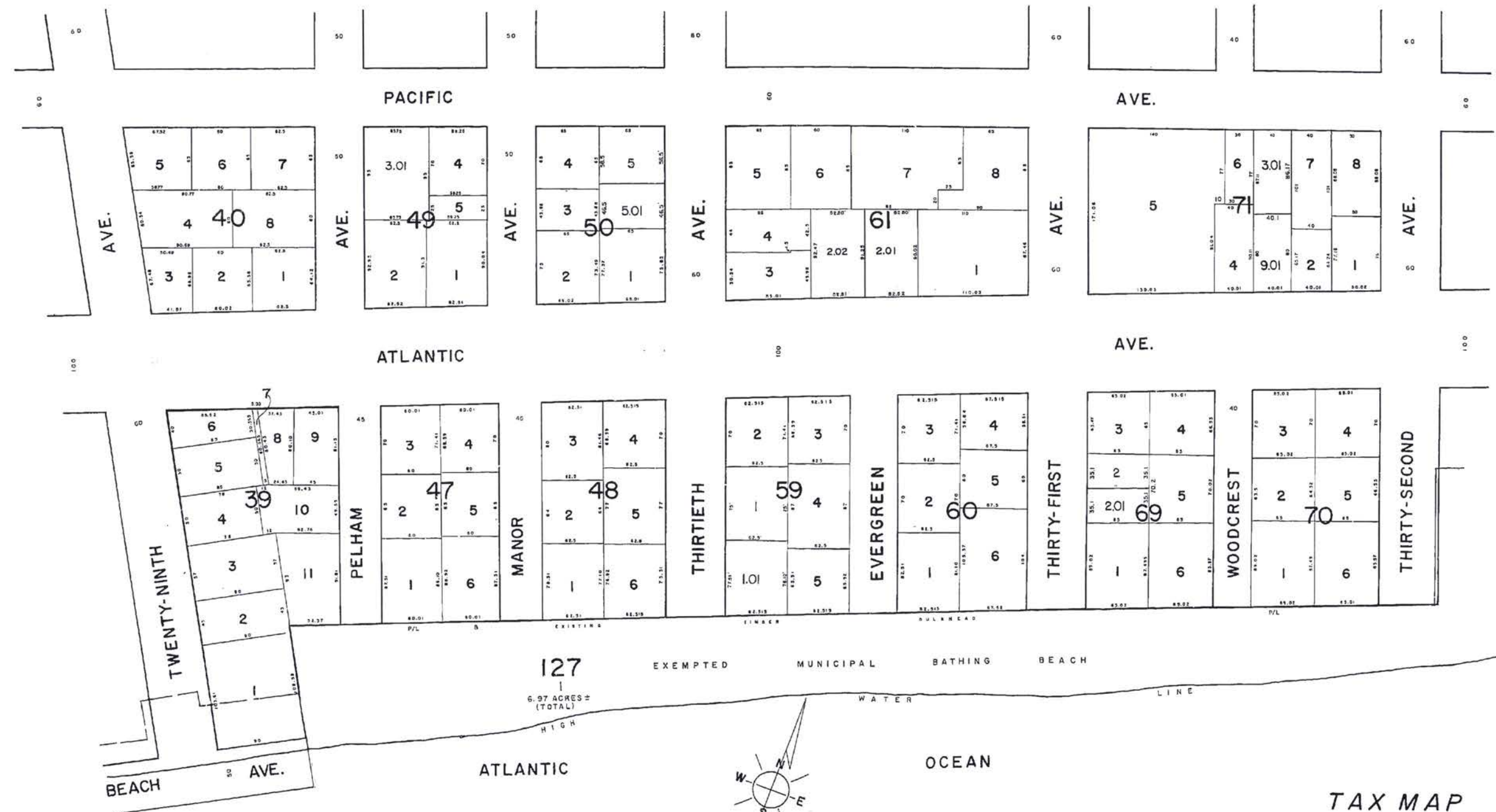
TAX MAP
 OF THE
BOROUGH OF LONGPORT
ATLANTIC COUNTY, N.J.
 SCALE: 1" = 50'
 1970
 REV. JAN. 1984
 J. THOMAS WOOD, JR., P.E., B.L.S. NO. 8139
 GEORGE E. SCHILLING, L.S. NO. 16198
 421 GUARANTEE TRUST BLDG.
 ATLANTIC CITY, N.J.

ADJOINS SHEET 9

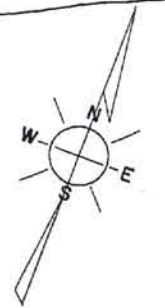
8

ADJOINS SHEET 6

ADJOINS SHEET 12



127
6.97 ACRES ±
(TOTAL)
HIGH



281

| | | |
|---------|---|-----|
| 7-1-93 | BLOCK 49 PER ASSESSOR | CBA |
| 12-1-93 | GENERAL - AS PER N.J. DEPT. OF TREASURY | CC |
| 10-1-93 | BLOCK 50, LOTS 1-11, M.M. SUBDIVISION | CC |
| DATE | REVISION | BY |

NEW JERSEY DEPARTMENT OF THE TREASURY
DIVISION OF TAXATION
PUBLIC UTILITY TAX BUREAU
APPROVED AS A TAX MAP PURSUANT TO THE
PROVISIONS OF CHAPTER 123, LAWS OF 1983, AND
FOR THE DIRECTOR, DIVISION OF TAXATION.
J. H. Thomas, Esq.
DEC 8 1970 SERIAL No. 4911

TAX MAP
OF THE
BOROUGH OF LONGPORT
ATLANTIC COUNTY, N.J.
SCALE: 1" = 50'
1970
REV. JAN. 1984
J. THOMAS WOOD, JR., P.E. & L.S. NO. 8129
GEORGE E. SCHILING, L.S. NO. 10198
421 GUARANTEE TRUST BLDG.
ATLANTIC CITY, N.J.

8

ADJOINS SHEET 11



| | | |
|---------|--------------------------------------|-----|
| 7-2-93 | DLOCH 65, SUBDIVISION | CBA |
| 12-1-82 | GENERAL - PER N.J. DEPT. OF TREASURY | CBA |
| DATE | REVISION | BY |

ADJOINS SHEET 9

DECO 1989 REVISIONS

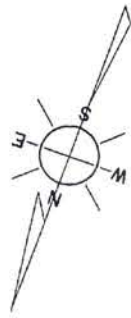
ADJOINS SHEET 14

| DATE | REVISION |
|------|----------|
| | |
| | |
| | |
| | |

ADJOINS SHEET 10

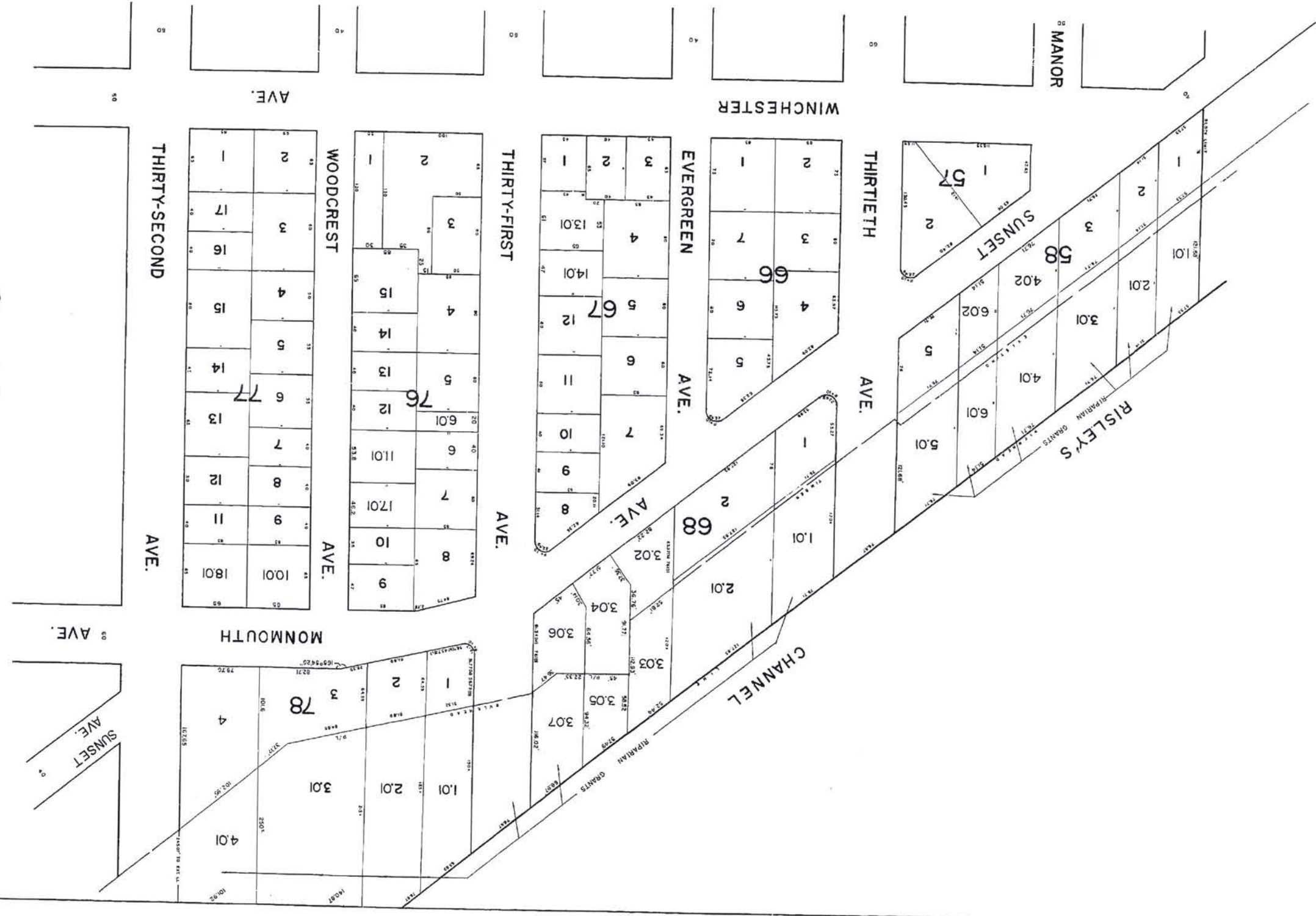
NEW JERSEY DEPARTMENT OF TREASURY
 DIVISION OF TAXATION
 PUBLIC UTILITY TAX MAPS
 APPROVED AS A TAX MAP PURSUANT TO THE
 PROVISIONS OF CHAPTER 128, LAWS OF 1975,
 AS AMENDED, BY THE DIRECTOR, DIVISION OF TAXATION,
 DATE: DEC 8 1978
 AT: [Signature]
 TITLE: [Signature]
 4138

TAX MAP
 OF THE
 BOROUGH OF LONGPORT
 ATLANTIC COUNTY, N.J.
 1970
 REV. JAN. 1984
 J. THOMAS WOOD, JR., P.E. & L.S. NO. 8133
 GEORGE E. SCHILLING, L.S. NO. 16198
 421 GUANANTEE TRUST BLDG.
 ATLANTIC CITY, N.J.



ADJOINS SHEET 15

ADJOINS SHEET 16



11

11



ADJOINS SHEET 8

285

| DATE | REVISIONS | BY |
|------|-----------|----|
| | | |
| | | |
| | | |

NEW JERSEY DEPARTMENT OF THE TREASURY
 DIVISION OF TAXATION
 PUBLIC UTILITY TAX BUREAU
 APPROVED AS A TAX MAP PURSUANT TO THE
 PROVISIONS OF CHAPTER 174, LAWS OF 1970, AND
 FOR THE DIRECTOR, DIVISION OF TAXATION.
 BY *J. H. [Signature]* S.M.S.
 L.L.O. #5009 STATE SUPERVISOR
 DATED DEC 8 1970 SERIAL No. 498

TAX MAP
 OF THE
BOROUGH OF LONGPORT
ATLANTIC COUNTY, N.J.
 SCALE: 1" = 50'
 1970
 REV. JAN. 1984
 J. THOMAS WOOD, JR., R.E. & L.S. NO. 8139
 GEORGE E. SCHILLING L.S. NO. 16190
 421 GUARANTEE TRUST BLDG.
 ATLANTIC CITY, N.J.

| | |
|--------|----------------------|
| DATE | REVISIONS |
| 7/7/95 | BLOCKED PER ASSESSOR |
| | APPROVED BY |
| | BY |

TAX MAP
 OF THE
 BOROUGH OF LONGPORT
 ATLANTIC COUNTY, N.J.
 SCALE: 1" = 50'
 REV. JAN. 1984
 1970
 J. THOMAS WOOD, JR., P.E. & L.S. NO. 8139
 GEORGE E. SCHILLING, L.S. NO. 16136
 421 GUARANTEE TRUST BLDG.
 ATLANTIC CITY, N.J.

NEW JERSEY DEPARTMENT OF THE TREASURY
 DIVISION OF TAXATION
 PUBLIC UTILITY TAX DIVISION
 APPROVED AS A TAX MAP PURSUANT TO THE
 PROVISIONS OF CHAPTER 122, L.A.C. 1970, AND
 FOR THE DIRECTOR, DIVISION OF TAXATION.
 ATTEST: *[Signature]*
 DEPT. OF TREASURY
 DEC 8 1970 SERIAL NO. 498



ADJOINS SHEET 9

ADJOINS SHEET 12

ADJOINS SHEET 14

| | |
|---------|------------------------|
| DATE | REVISION |
| 2-16-78 | BLOCK 23 PER AMENDMENT |
| NOV | |
| NOV | |
| NOV | |
| NOV | |
| NOV | |
| NOV | |
| NOV | |
| NOV | |

ADJOINS SHEET 14

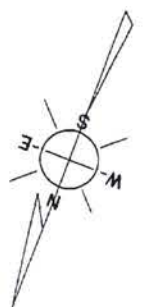
ADJOINS SHEET 16

TAX MAP
OF THE
BOROUGH OF LONGPORT
ATLANTIC COUNTY, N.J.

SCALE: 1" = 50'
REV. JAN. 1984
1970

J. THOMAS WOOD, JR., RE. & L.S. NO. 8139
GEORGE E. SCHILLING, L.S. NO. 16138
421 GUARANTEE TRUST BLDG.
ATLANTIC CITY, N.J.

NEW JERSEY DEPARTMENT OF THE TREASURER
DIVISION OF TAXATION
PUBLIC UTILITY TAX BUREAU
APPROVED AS A TAX MAP PURSUANT TO THE
REVISIONS OF CHAPTER 122, LAW 1970, AND
FOR THE DIRECTOR, DIVISION OF TAXATION,
BY *[Signature]* L.S. NO. 8500
DATE: _____



ADJOINS SHEET 11

