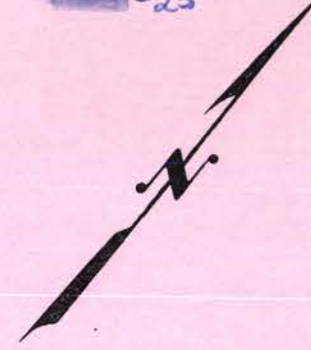


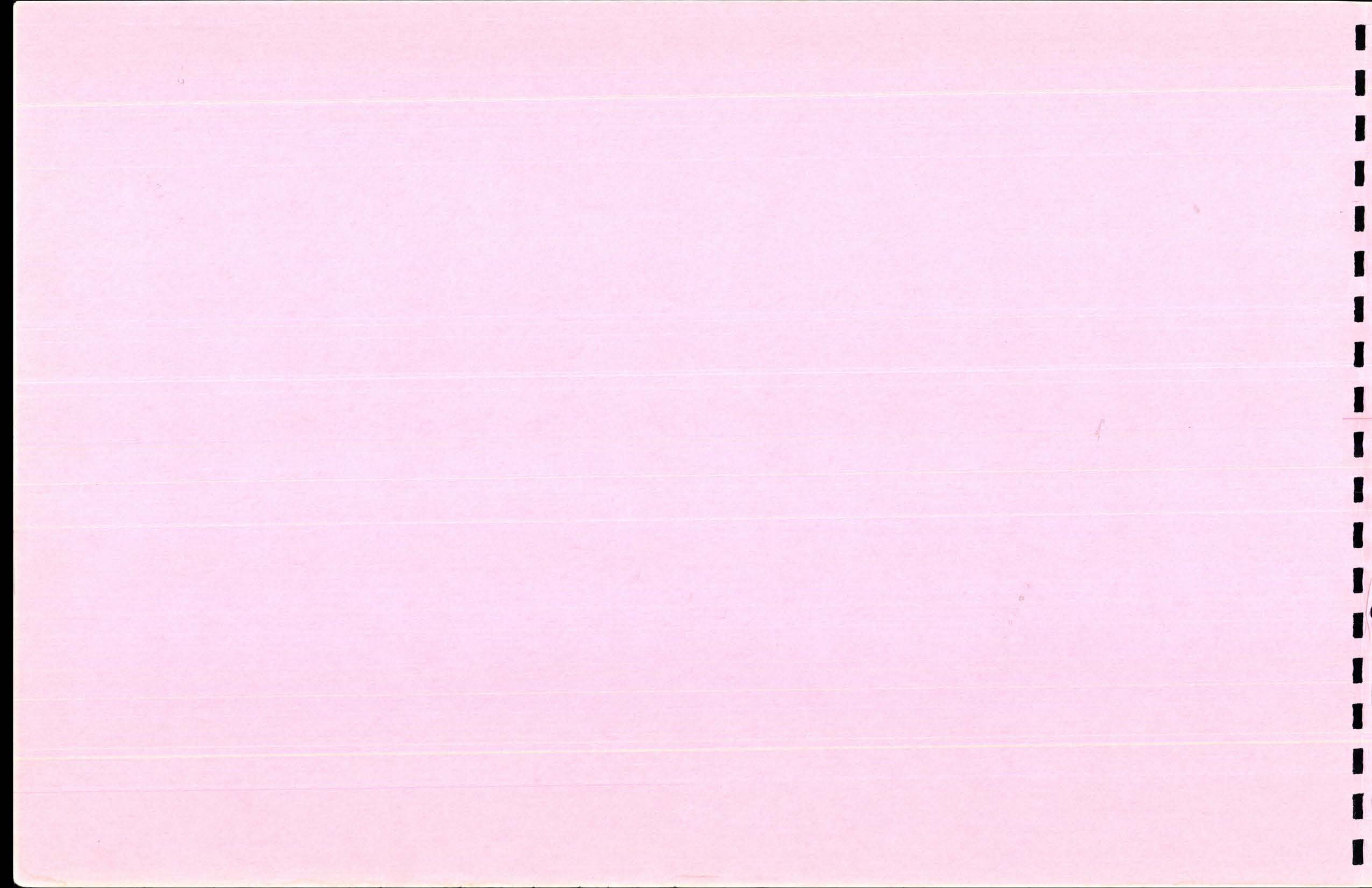
Proposed
 Key: R.O.W. fr. £

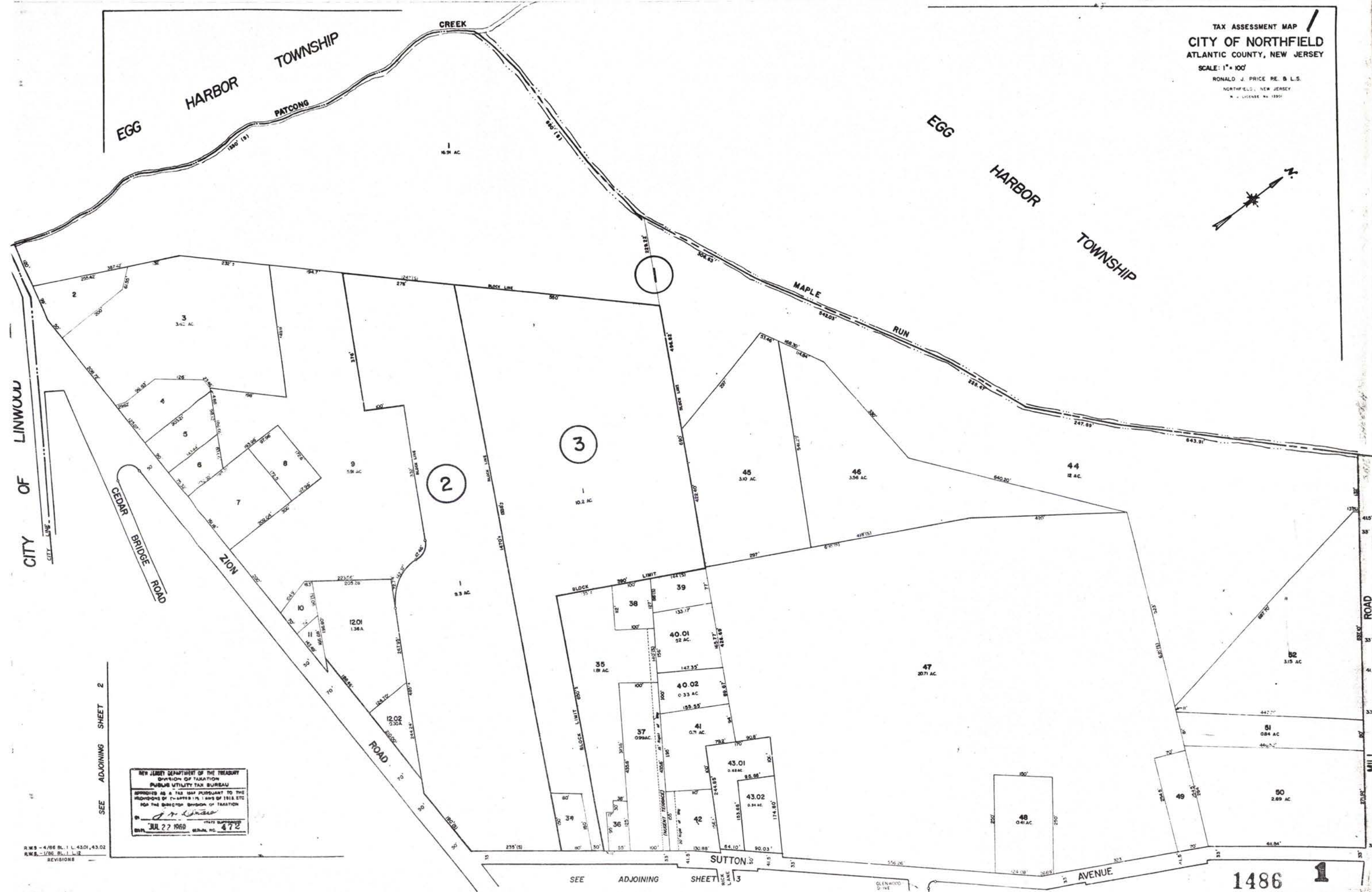
 -35'	 -60'
 -45'	 -50'
 -30'	 -25'
 -40'	



LEGEND
 (11) ...INDICATES MAP PAGE NUMBER

INDEX MAP OF
 CITY OF NORTHFIELD
 ATLANTIC COUNTY, NEW JERSEY





SEE ADJOINING SHEET 2

NEW JERSEY DEPARTMENT OF THE TREASURY
 DIVISION OF TAXATION
 PUBLIC UTILITY TAX BUREAU
 APPROVED AS A TAX MAP PURSUANT TO THE
 PROVISIONS OF CHAPTER 175, LAWS OF 1918, ETC.
 FOR THE DIVISION OF TAXATION
 JUL 27 1969
 STATE SUPERVISOR
 SERIAL NO. 472

R.W.S. - 4/86 BL. 1 L. 43.01, 43.02
 R.W.S. - 1/86 BL. 1 L. 12
 REVISIONS

SEE ADJOINING SHEET 13

EGG HARBOR TOWNSHIP

16.01

8
24,708 AC.
EXEMPTED CITY PARK

NEW JERSEY DEPARTMENT OF THE TREASURY
DIVISION OF TAXATION
PUBLIC UTILITY TAX BUREAU
APPROVED AS A TAX MAP PURSUANT TO THE
PROVISIONS OF CHAPTER 178, LAWS OF 1918, ETC.,
FOR THE DISTRICT OF NORTHFIELD, N.J.
BY *J. H. [Signature]*
DATE: JUL 27 1969 SERIAL NO. 472

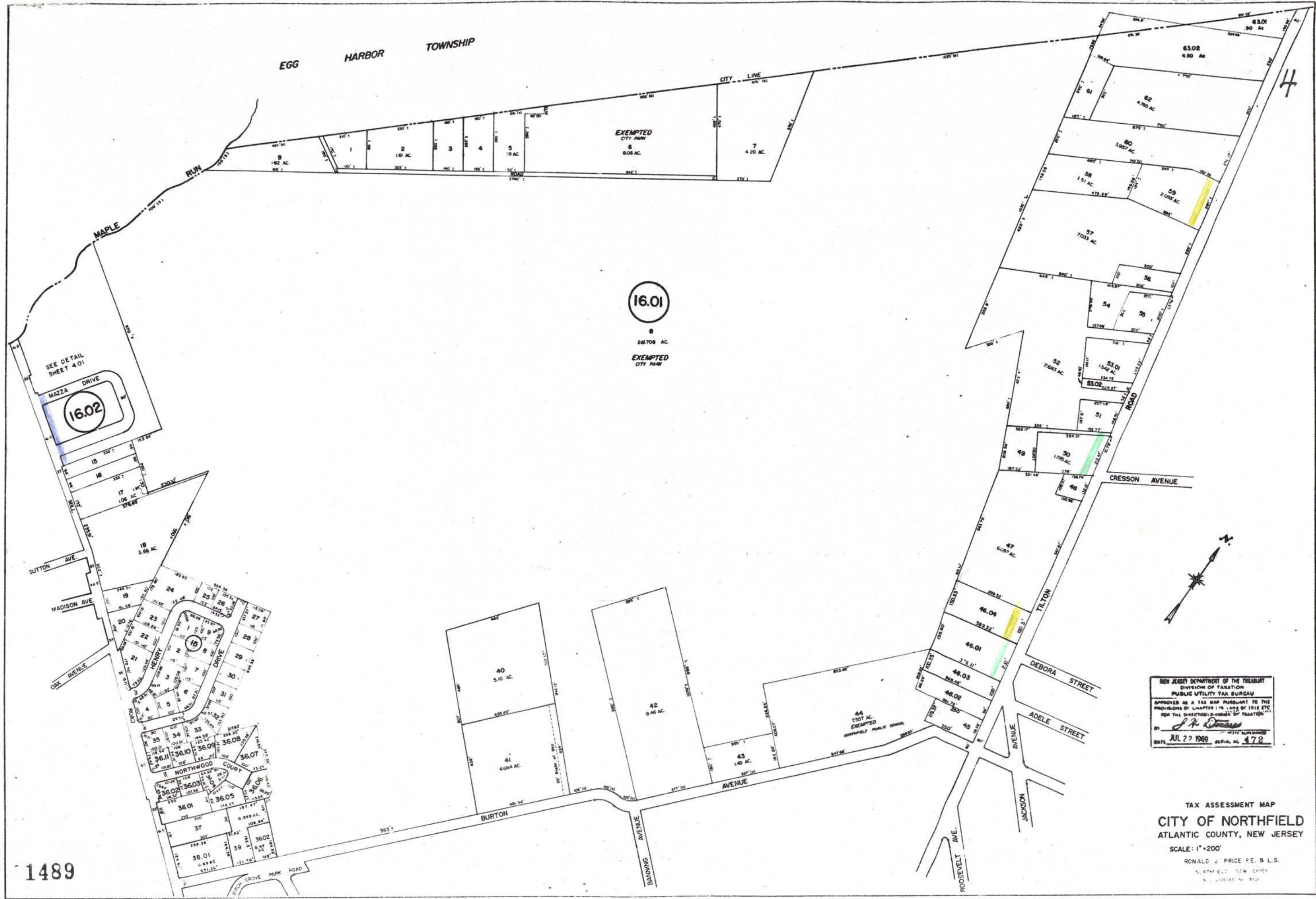
TAX ASSESSMENT MAP
CITY OF NORTHFIELD
ATLANTIC COUNTY, NEW JERSEY
SCALE: 1"=200'
RONALD J. PRICE P.E. & L.S.
NORTHFIELD, NEW JERSEY
N.J. LICENSE NO. 3524

1489

SEE ADJOINING SHEET 7 SEE ADJOINING SHEET 3 SEE ADJOINING SHEET 1

SEE ADJOINING SHEET 10 SEE ADJOINING SHEET 8

SEE ADJOINING SHEET 8 SEE ADJOINING SHEET 9

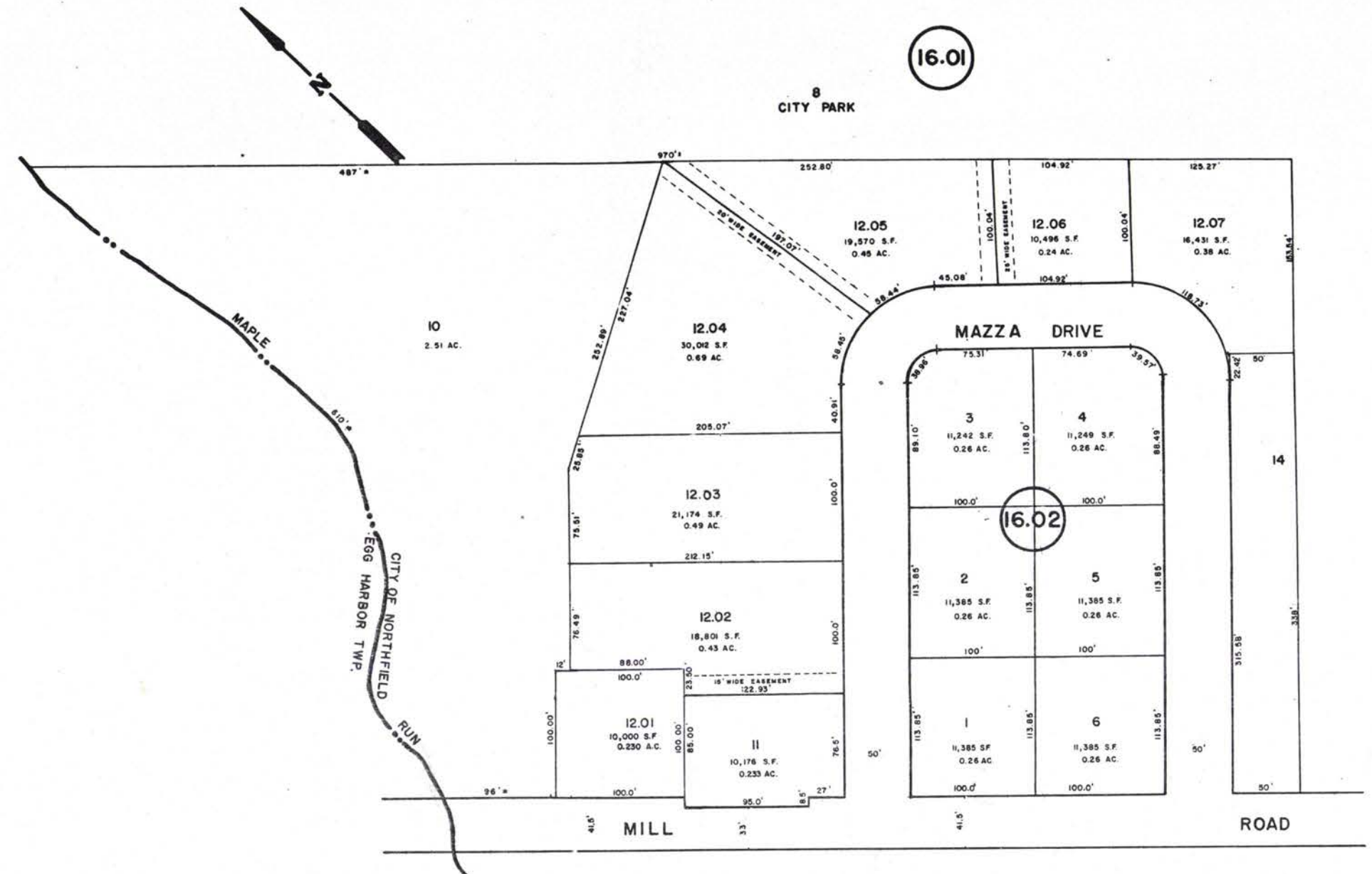


4.01

SEE ADJOINING SHEET 4

16.01

8 CITY PARK



SEE ADJOINING SHEET 4

1490

TAX ASSESSMENT MAP
CITY OF NORTHFIELD
 ATLANTIC COUNTY, NEW JERSEY
 SCALE: 1" = 50' APRIL, 1987
ROBERT W. SMITH, JR.
 N.J.P.L.S. LICENSE NO. 23934
 CENTRAL PARK EAST · 222 NEW ROAD
 LINWOOD, NEW JERSEY 08221

SEE ADJOINING SHEET 1



1491

NEW JERSEY DEPARTMENT OF THE TREASURY
 DIVISION OF TAXATION
 PUBLIC UTILITY TAX BUREAU
 APPROVED AS A TAX MAP PURSUANT TO THE
 PROVISIONS OF CHAPTER 176, LAWS OF 1912, ETC.
 FOR THE DIRECTOR, DIVISION OF TAXATION
J. H. [Signature]
 JUL 22 1969
 STATE NO. 472

TAX ASSESSMENT MAP
 CITY OF NORTHFIELD
 ATLANTIC COUNTY, NEW JERSEY
 SCALE: 1" = 100'
 RONALD J. PRICE, P.E. & L.S.
 NORTHFIELD, NEW JERSEY
 N. J. LICENSE NO. 3801

SEE ADJOINING SHEET 10
 SEE ADJOINING SHEET 11

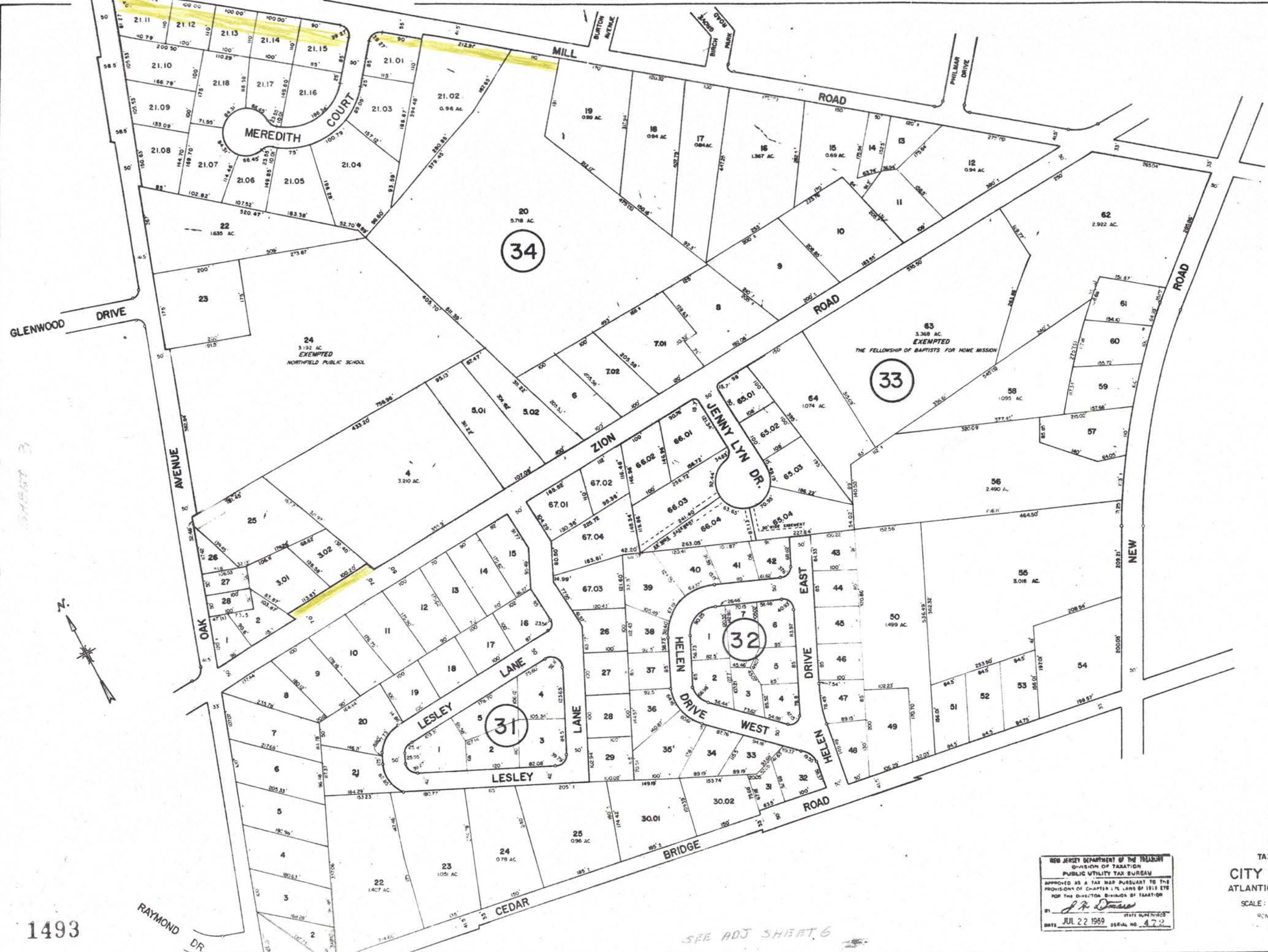
CITY OF LINWOOD



NEW JERSEY DEPARTMENT OF TREASURY
 DIVISION OF TAXATION
 PUBLIC UTILITY TAX BUREAU
 APPROVED AS A TAX MAP PURSUANT TO THE
 PROVISIONS OF CHAPTER 178, LAWS OF 1912, ETC.
 FOR THE DIRECTOR'S OFFICE OF TAXATION
J. H. O'Connell
 JUL 22 1969
 STATE REGISTRY NO. 472

TAX ASSESSMENT MAP
 CITY OF NORTHFIELD
 ATLANTIC COUNTY, NEW JERSEY

SCALE: 1" = 100'
 RONALD J. PRICE, P.E., R.L.S.
 1492



SEE ADJOINING SHEET 14
SEE ADJOINING SHEET 13

1493

SEE ADJ SHEET 6

NEW JERSEY DEPARTMENT OF THE TREASURY
 DIVISION OF TAXATION
 PUBLIC UTILITY TAX BUREAU
 APPROVED AS A TAX MAP PURSUANT TO THE
 PROVISIONS OF CHAPTER 126, LAWS OF 1913 ETC.
 FOR THE DIRECTOR, DIVISION OF TAXATION
J. P. [Signature]
 JUL 22 1969
 SERIAL NO. 472

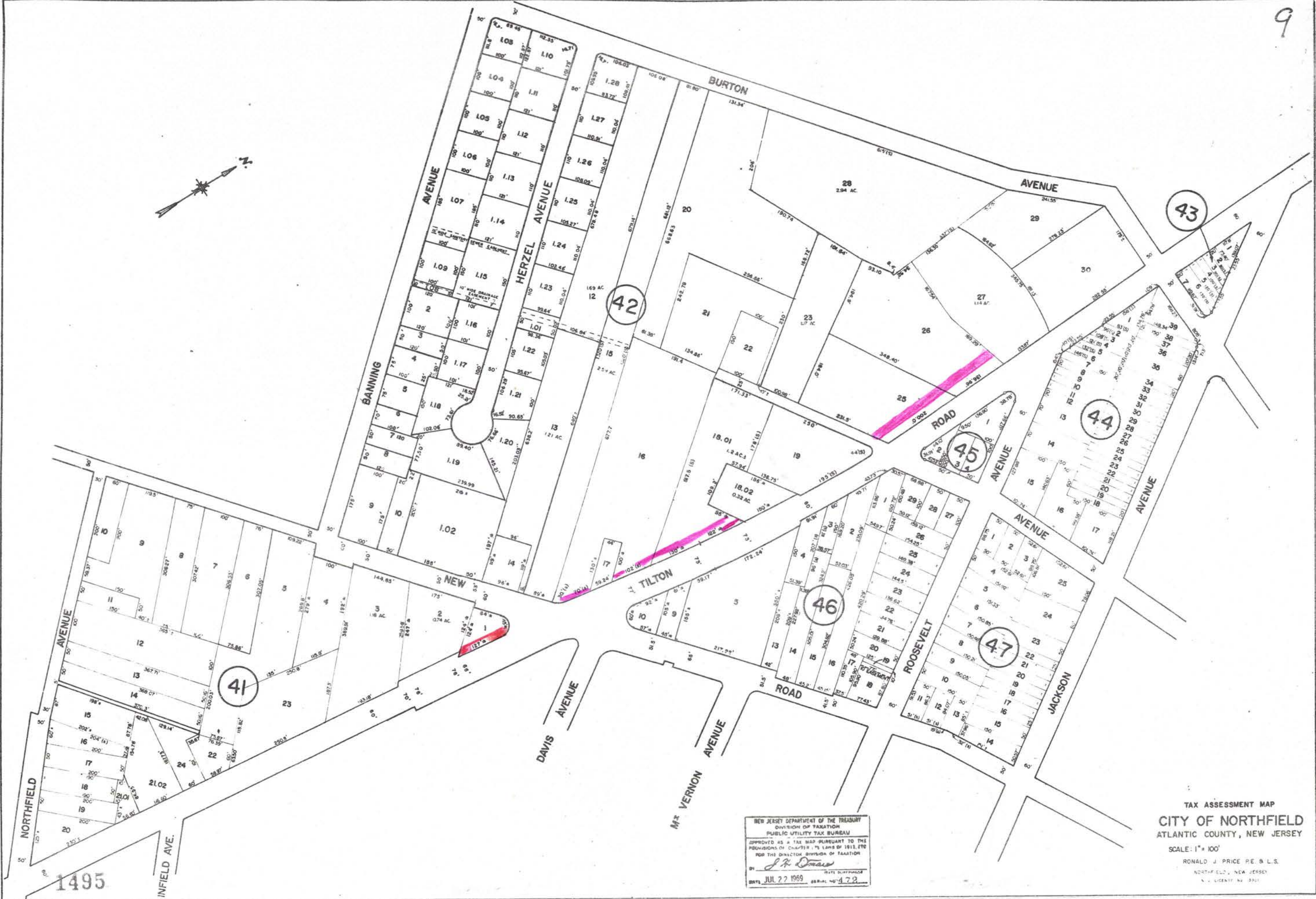
TAX ASSESSMENT MAP
 CITY OF NORTHFIELD
 ATLANTIC COUNTY, NEW JERSEY
 SCALE: 1" = 100'
 RONALD J. PRICE, PE & LS
 NORTHFIELD, NEW JERSEY

SEE ADJOINING SHEET 13 SEE ADJOINING SHEET 7 SEE ADJOINING SHEET 9



NEW JERSEY DEPARTMENT OF THE TREASURY
 DIVISION OF TAXATION
 PUBLIC UTILITY TAX BUREAU
 APPROVED AS A TAX MAP PURSUANT TO THE
 PROVISIONS OF CHAPTER 175, APPS OF 1913 ETC
 FOR THE DIRECTOR, DIVISION OF TAXATION
J. H. [Signature]
 DATE JUL 22 1969 STATE SUPERVISOR SERIAL NO. 472

TAX ASSESSMENT MAP
 CITY OF NORTHFIELD
 ATLANTIC COUNTY, NEW JERSEY
 SCALE: 1" = 100'
 RONALD J. PRICE PE B L S
 NORTHFIELD, N.J.
 1494

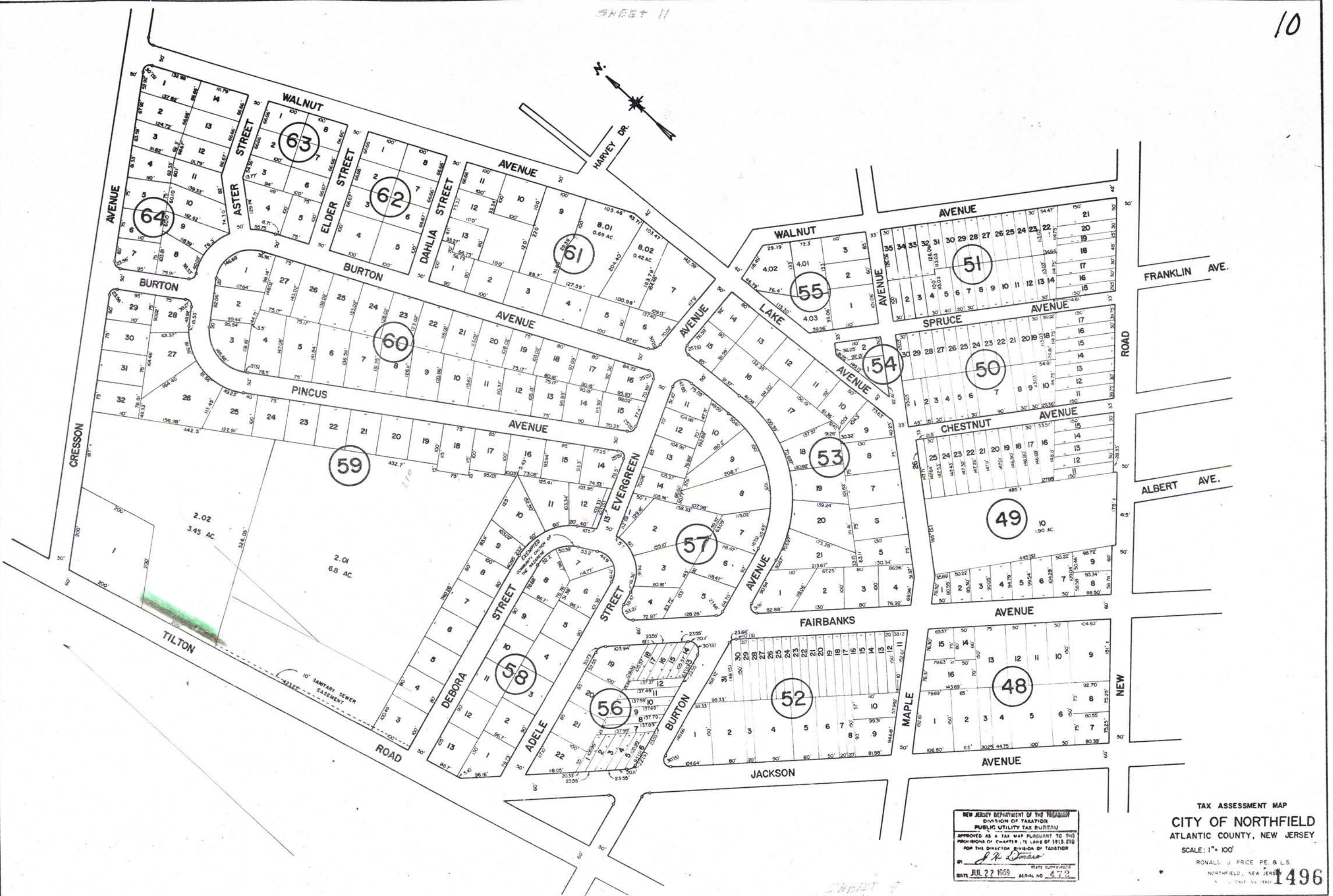


1495

NEW JERSEY DEPARTMENT OF THE TREASURY
 DIVISION OF TAXATION
 PUBLIC UTILITY TAX BUREAU
 APPROVED AS A TAX MAP PURSUANT TO THE
 PROVISIONS OF CHAPTER 176, LAWS OF 1911, AS
 AMENDED, FOR THE DIVISION OF TAXATION
 BY *J. H. Dumas*
 DATE JUL 27 1969 SERIAL NO. 472

TAX ASSESSMENT MAP
 CITY OF NORTHFIELD
 ATLANTIC COUNTY, NEW JERSEY
 SCALE: 1" = 100'
 RONALD J. PRICE P.E. & L.S.
 NORTHFIELD, NEW JERSEY
 S. J. LICENTY NO. 3701

SEE ADJOINING SHEET 10



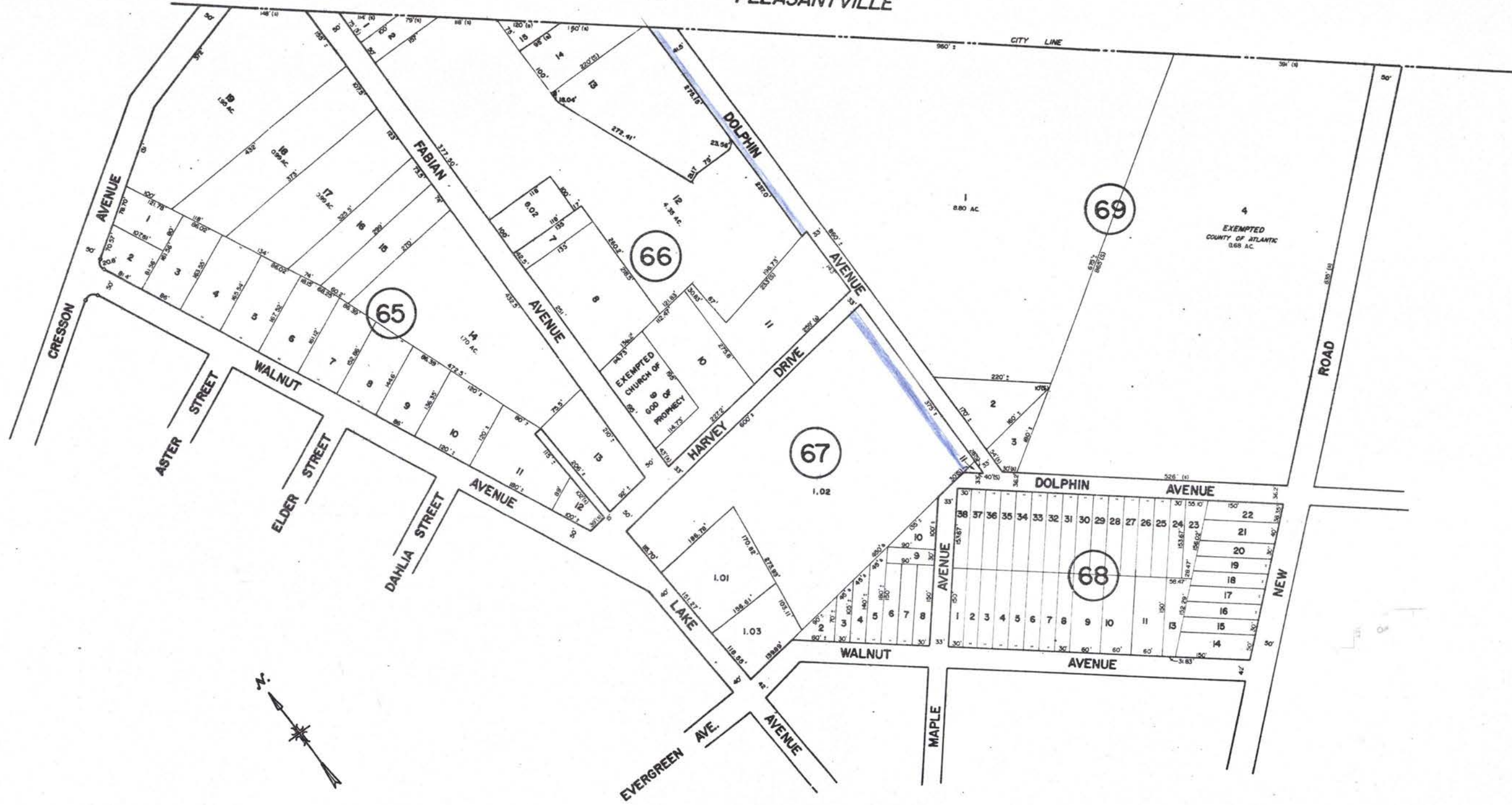
NEW JERSEY DEPARTMENT OF THE TREASURY
 DIVISION OF TAXATION
 PUBLIC UTILITY TAX BUREAU
 APPROVED AS A TAX MAP PURSUANT TO THE
 PROVISIONS OF CHAPTER 12, LAWS OF 1915, ETC.
 FOR THE DIRECTOR, DIVISION OF TAXATION
J. R. Thomas
 BY JUL 22 1959 PLATS SUPPORTABLE SERIAL NO. 472

TAX ASSESSMENT MAP
 CITY OF NORTHFIELD
 ATLANTIC COUNTY, NEW JERSEY
 SCALE: 1" = 100'
 RONALD J. PRICE, P.E. & L.S.
 NORTHFIELD, NEW JERSEY
 1496

SEE ADJOINING SHEET 16 SHEET 15

CITY OF PLEASANTVILLE

CITY LINE

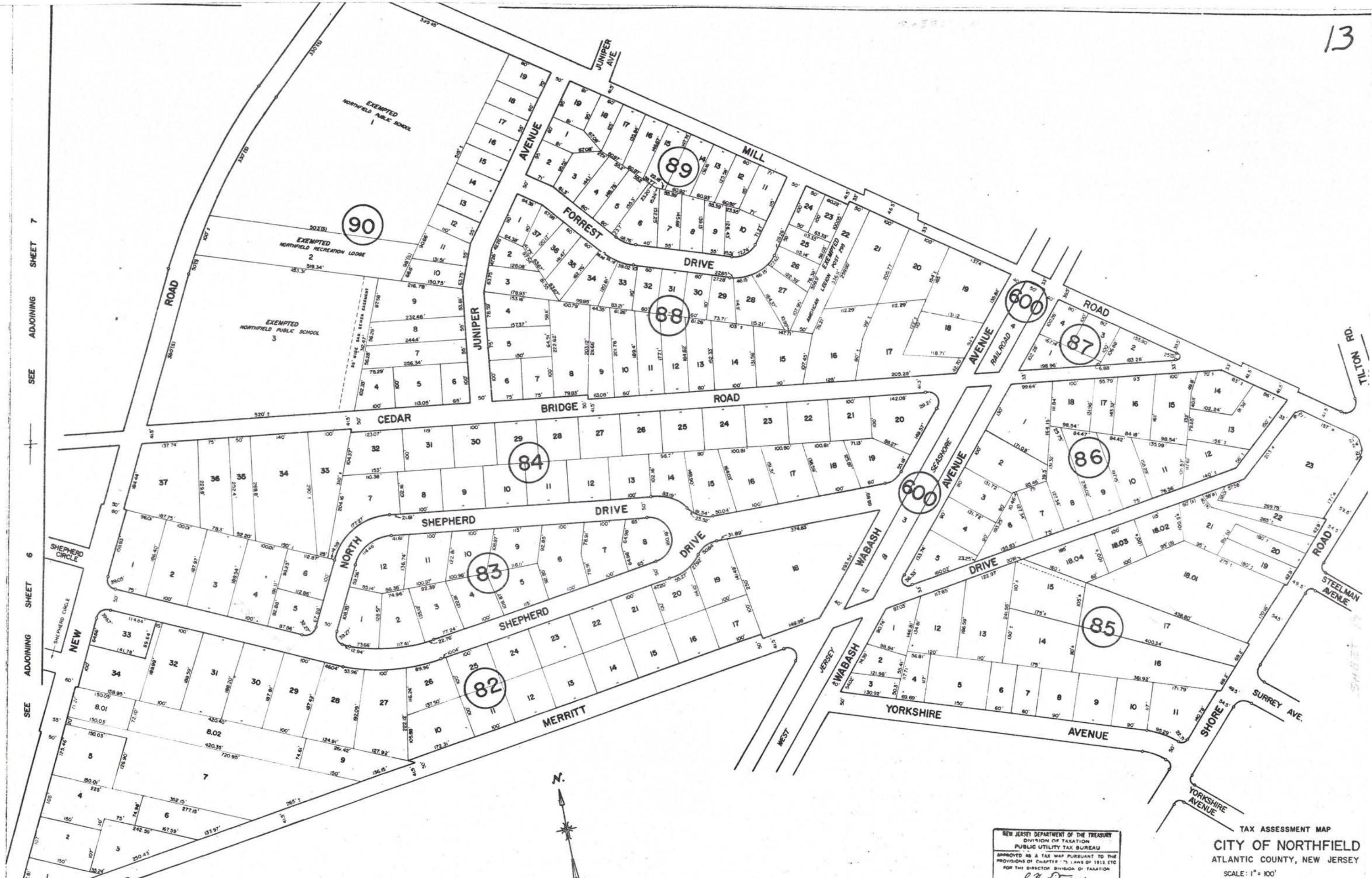


SEE ADJOINING SHEET 17
 SEE ADJOINING SHEET 16
 SEE ADJOINING SHEET 15

NEW JERSEY DEPARTMENT OF THE TREASURY
 DIVISION OF TAXATION
 PUBLIC UTILITY TAX BUREAU
 APPROVED AS A TAX MAP PURSUANT TO THE
 PROVISIONS OF CHAPTER 175 LAWS OF 1918 276
 FOR THE DIRECTOR DIVISION OF TAXATION
 BY *J. H. Jones*
 DATE JUL 22 1969 REVISION NO. 472

TAX ASSESSMENT MAP
 CITY OF NORTHFIELD
 ATLANTIC COUNTY, NEW JERSEY
 SCALE: 1" = 100'
 RONALD W. PRICE PE & LS.
 NORTHFIELD, NEW JERSEY

SEE ADJOINING SHEET 6 SEE ADJOINING SHEET 7



1499

NEW JERSEY DEPARTMENT OF THE TREASURY
 DIVISION OF TAXATION
 PUBLIC UTILITY TAX BUREAU
 APPROVED AS A TAX MAP PURSUANT TO THE
 PROVISIONS OF CHAPTER 17, LAWS OF 1911, ETC.
 FOR THE DIRECTOR, DIVISION OF TAXATION
J. R. Dineen
 DATE JUL 22 1969 SERIAL NO. 472

TAX ASSESSMENT MAP
 CITY OF NORTHFIELD
 ATLANTIC COUNTY, NEW JERSEY
 SCALE: 1" = 100'
 RONALD H. PRICE, P.E., S.L.S.
 NORTHFIELD, NEW JERSEY

SHEET 9

SHEET 13

14



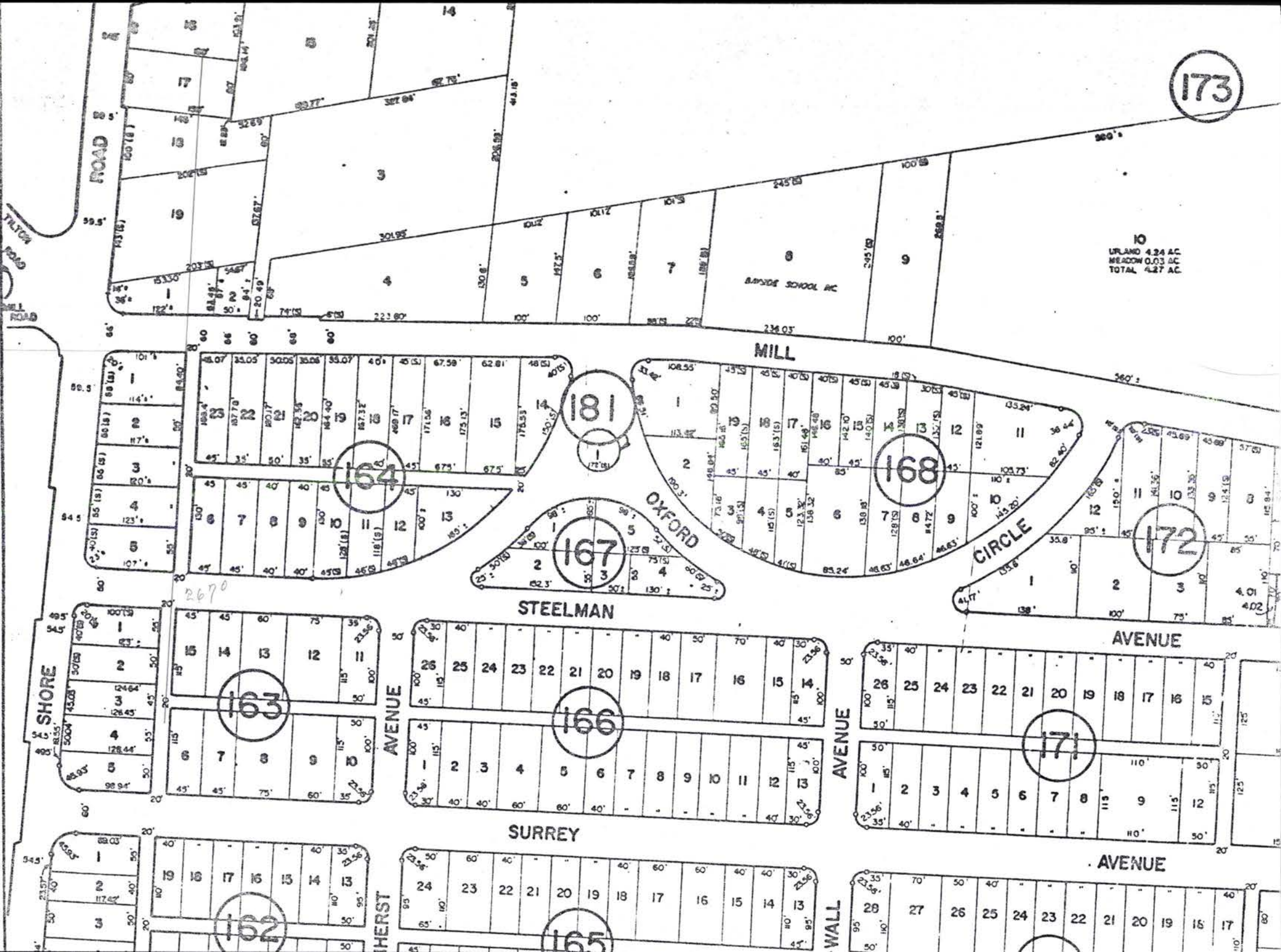
SEE MAP SHEET 8

SEE ADJOINING SHEET 20
SEE ADJOINING SHEET 19
SEE ADJOINING SHEET 15

NEW JERSEY DEPARTMENT OF THE TREASURY
DIVISION OF TAXATION
PUBLIC UTILITY TAX BUREAU
APPROVED AS A TAX MAP PURSUANT TO THE
PROVISIONS OF CHAPTER 116 LAWS OF 1912, ETC.
FOR THE DIRECTOR DIVISION OF TAXATION
J. R. O'Neil
DATE JUL 22 1969
SERIAL NO. 472

TAX ASSESSMENT MAP
CITY OF NORTHFIELD
ATLANTIC COUNTY, NEW JERSEY
SCALE: 1" = 100'
RONALD J. PRICE PE B.L.S.
NORTHFIELD, NEW JERSEY
1500

SEE ADJOINING SHEET 13 SEE ADJOINING SHEET 14



173

10 UPLAND 4.24 AC MEADOW 0.03 AC TOTAL 4.27 AC

MILL

OXFORD

STEELMAN

AVENUE

SURREY

AVENUE

SHORE

AVENUE

AVENUE

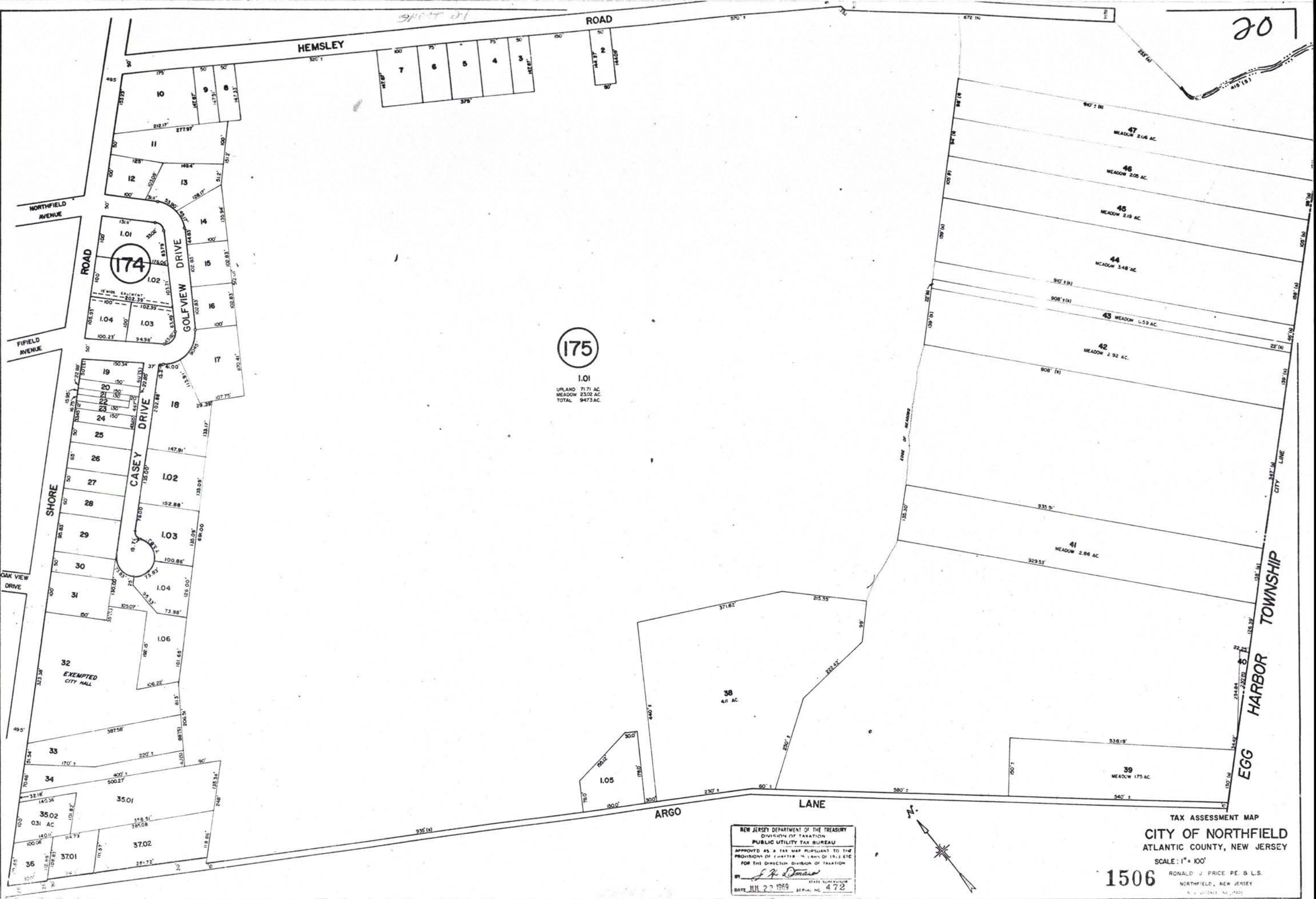
HERST

WALL



20

SEE ADJOINING SHEET 14 SEE ADJOINING SHEET 15



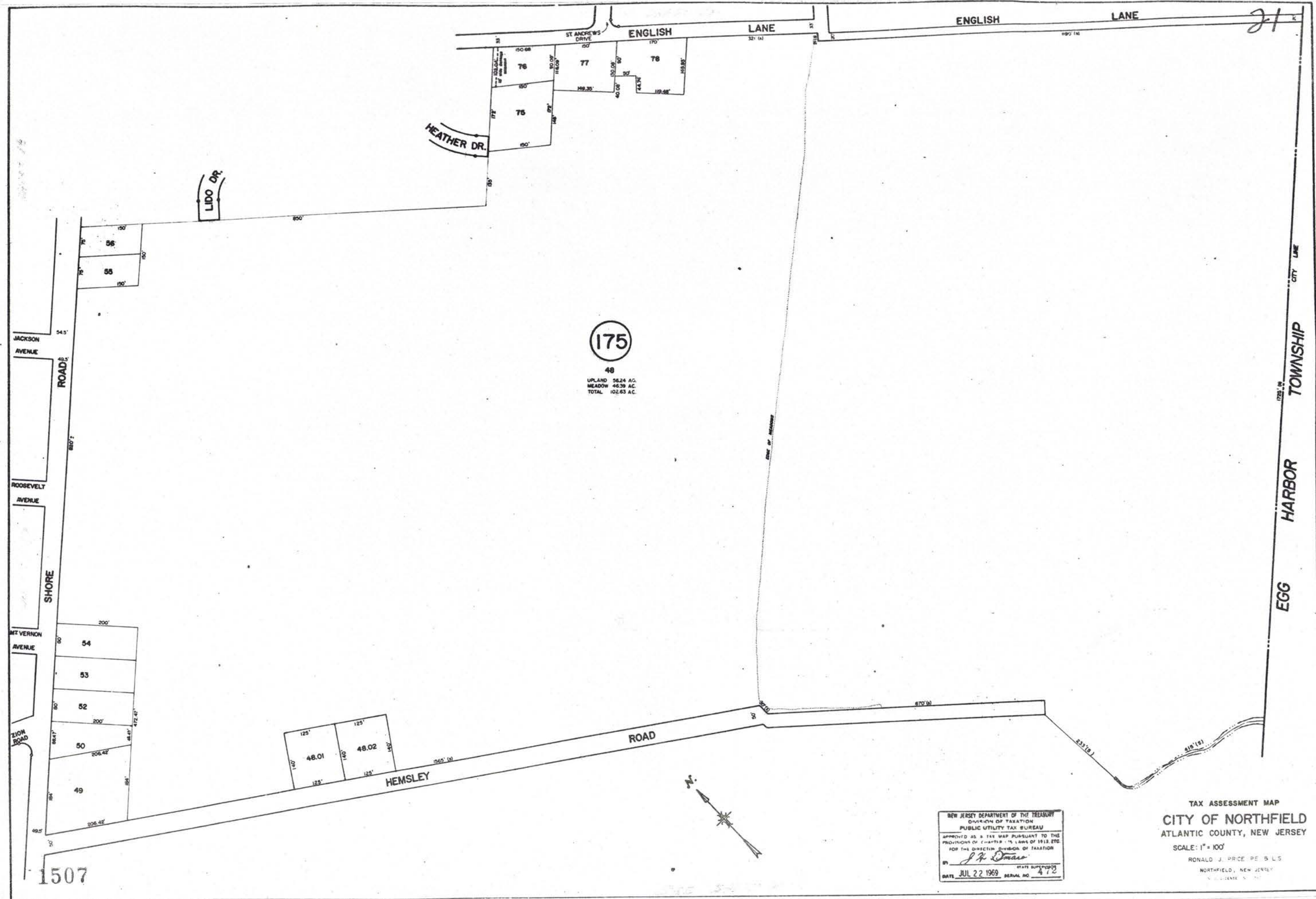
175

UPLAND	71.71 AC
MEADOW	23.02 AC
TOTAL	94.73 AC

NEW JERSEY DEPARTMENT OF THE TREASURY
 DIVISION OF TAXATION
 PUBLIC UTILITY TAX BUREAU
 APPROVED AS A TAX MAP PURSUANT TO THE
 PROVISIONS OF CHAPTER 12, LAWS OF 1953, ETC.
 FOR THE DIVISION OF TAXATION
 BY *J. H. Doman*
 DATE JUL 22 1969 SERIAL NO. 472



TAX ASSESSMENT MAP
 CITY OF NORTHFIELD
 ATLANTIC COUNTY, NEW JERSEY
 SCALE: 1" = 100'
 1506 RONALD J. PRICE PE & L.S.
 NORTHFIELD, NEW JERSEY



175

48
 UPLAND 56.24 AC.
 MEADOW 46.39 AC.
 TOTAL 102.63 AC.



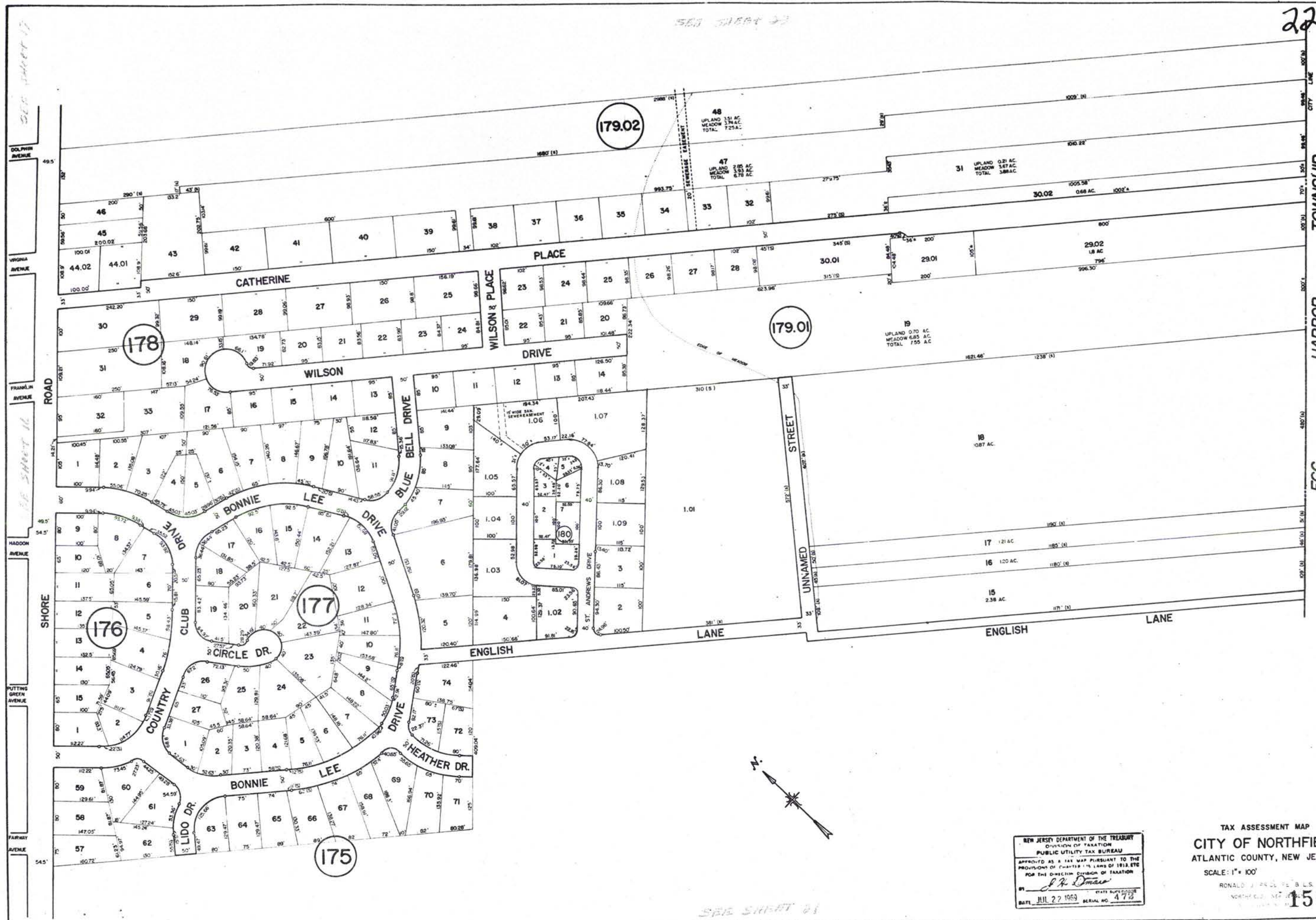
NEW JERSEY DEPARTMENT OF THE TREASURY
 DIVISION OF TAXATION
 PUBLIC UTILITY TAX BUREAU
 APPROVED AS A TAX MAP PURSUANT TO THE
 PROVISIONS OF CHAPTER 175 LAWS OF 1912, ETC.
 FOR THE DIRECTOR, DIVISION OF TAXATION
J. H. O'Connell
 DATE JUL 22 1969 SERIAL NO. 472

TAX ASSESSMENT MAP
 CITY OF NORTHFIELD
 ATLANTIC COUNTY, NEW JERSEY
 SCALE: 1" = 100'
 RONALD J. PRICE PE S L S
 NORTHFIELD, NEW JERSEY

1507

SEE SHEET 22

22



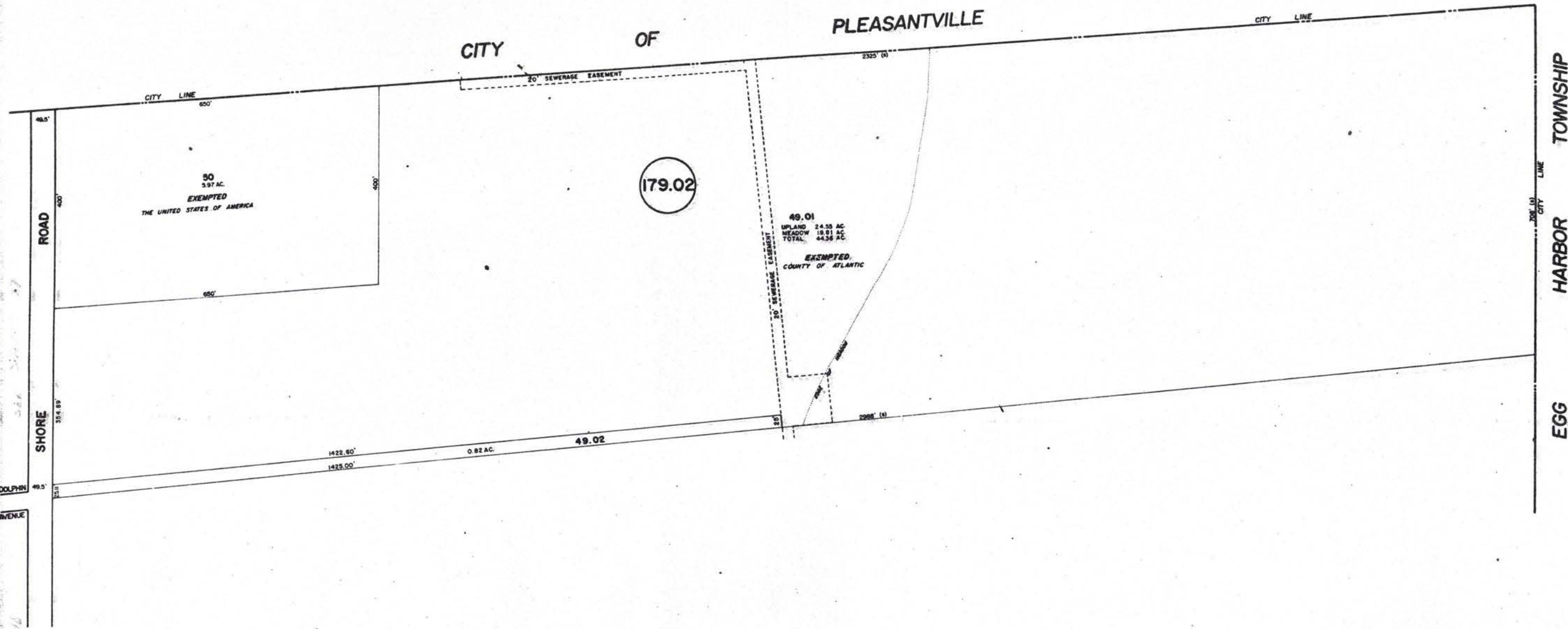
TOWNSHIP HARBOR EGG

NEW JERSEY DEPARTMENT OF THE TREASURY
 DIVISION OF TAXATION
 PUBLIC UTILITY TAX BUREAU
 APPROVED AS A TAX MAP PURSUANT TO THE
 PROVISIONS OF CHAPTER 124, LAWS OF 1913, ETC.
 FOR THE DIRECTOR, DIVISION OF TAXATION
J. H. Dumas
 DATE: JUL 27 1969 SERIAL NO. 473

TAX ASSESSMENT MAP
 CITY OF NORTHFIELD
 ATLANTIC COUNTY, NEW JERSEY
 SCALE: 1" = 100'

RONALD J. P. ... B.L.S.
 NORTHFIELD, N.J.
 1508

SEE SHEET 21



NEW JERSEY DEPARTMENT OF THE TREASURY
 DIVISION OF TAXATION
 PUBLIC UTILITY TAX BUREAU
 APPROVED AS A TAX MAP PURSUANT TO THE
 PROVISIONS OF CHAPTER 125, LAWS OF 1918, ETC.
 FOR THE DIVISION OF TAXATION

BY *J. P. Dineen*
 STATE SUPERVISOR

DATE JUL 22 1969 SERIAL NO. 472

TAX ASSESSMENT MAP
CITY OF NORTHFIELD
 ATLANTIC COUNTY, NEW JERSEY
 SCALE: 1" = 100'
 RONALD J. PRICE PE & LS.
 NORTHFIELD, NEW JERSEY
 N. J. LICENSE NO. 19021