

# **CITY OF PLEASANTVILLE**

511

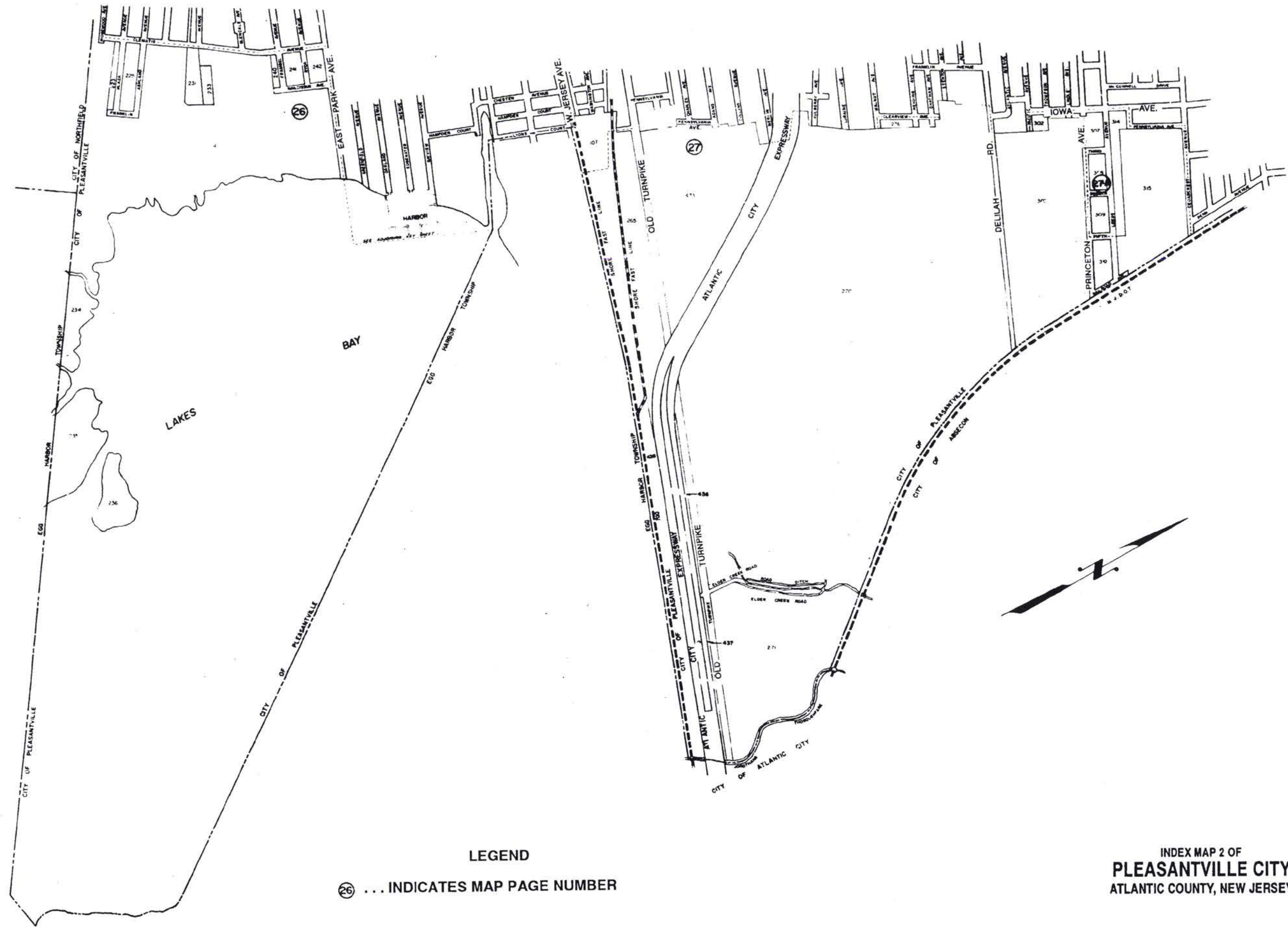
INDEX MAP 1 OF  
PLEASANTVILLE CITY  
ATLANTIC COUNTY, NEW JERSEY



512

LEGEND  
② ... INDICATES MAP PAGE NUMBER

BLOCK	SHEET	BLOCK	SHEET	BLOCK	SHEET	BLOCK	SHEET
1	1	10	10	19	19	28	28
2	2	11	11	20	20	29	29
3	3	12	12	21	21	30	30
4	4	13	13	22	22	31	31
5	5	14	14	23	23	32	32
6	6	15	15	24	24	33	33
7	7	16	16	25	25	34	34
8	8	17	17	26	26	35	35
9	9	18	18	27	27	36	36
10	10	19	19	28	28	37	37
11	11	20	20	29	29	38	38
12	12	21	21	30	30	39	39
13	13	22	22	31	31	40	40
14	14	23	23	32	32	41	41
15	15	24	24	33	33	42	42
16	16	25	25	34	34	43	43
17	17	26	26	35	35	44	44
18	18	27	27	36	36	45	45
19	19	28	28	37	37	46	46
20	20	29	29	38	38	47	47
21	21	30	30	39	39	48	48
22	22	31	31	40	40	49	49
23	23	32	32	41	41	50	50
24	24	33	33	42	42	51	51
25	25	34	34	43	43	52	52
26	26	35	35	44	44	53	53
27	27	36	36	45	45	54	54
28	28	37	37	46	46	55	55
29	29	38	38	47	47	56	56
30	30	39	39	48	48	57	57
31	31	40	40	49	49	58	58
32	32	41	41	50	50	59	59
33	33	42	42	51	51	60	60
34	34	43	43	52	52	61	61
35	35	44	44	53	53	62	62
36	36	45	45	54	54	63	63
37	37	46	46	55	55	64	64
38	38	47	47	56	56	65	65
39	39	48	48	57	57	66	66
40	40	49	49	58	58	67	67
41	41	50	50	59	59	68	68
42	42	51	51	60	60	69	69
43	43	52	52	61	61	70	70
44	44	53	53	62	62	71	71
45	45	54	54	63	63	72	72
46	46	55	55	64	64	73	73
47	47	56	56	65	65	74	74
48	48	57	57	66	66	75	75
49	49	58	58	67	67	76	76
50	50	59	59	68	68	77	77
51	51	60	60	69	69	78	78
52	52	61	61	70	70	79	79
53	53	62	62	71	71	80	80
54	54	63	63	72	72	81	81
55	55	64	64	73	73	82	82
56	56	65	65	74	74	83	83
57	57	66	66	75	75	84	84
58	58	67	67	76	76	85	85
59	59	68	68	77	77	86	86
60	60	69	69	78	78	87	87
61	61	70	70	79	79	88	88
62	62	71	71	80	80	89	89
63	63	72	72	81	81	90	90
64	64	73	73	82	82	91	91
65	65	74	74	83	83	92	92
66	66	75	75	84	84	93	93
67	67	76	76	85	85	94	94
68	68	77	77	86	86	95	95
69	69	78	78	87	87	96	96
70	70	79	79	88	88	97	97
71	71	80	80	89	89	98	98
72	72	81	81	90	90	99	99
73	73	82	82	91	91	100	100
74	74	83	83	92	92		
75	75	84	84	93	93		
76	76	85	85	94	94		
77	77	86	86	95	95		
78	78	87	87	96	96		
79	79	88	88	97	97		
80	80	89	89	98	98		
81	81	90	90	99	99		
82	82						
83	83						
84	84						
85	85						
86	86						
87	87						
88	88						
89	89						
90	90						
91	91						
92	92						
93	93						
94	94						
95	95						
96	96						
97	97						
98	98						
99	99						
100	100						



INDEX MAP 2 OF  
**PLEASANTVILLE CITY**  
 ATLANTIC COUNTY, NEW JERSEY

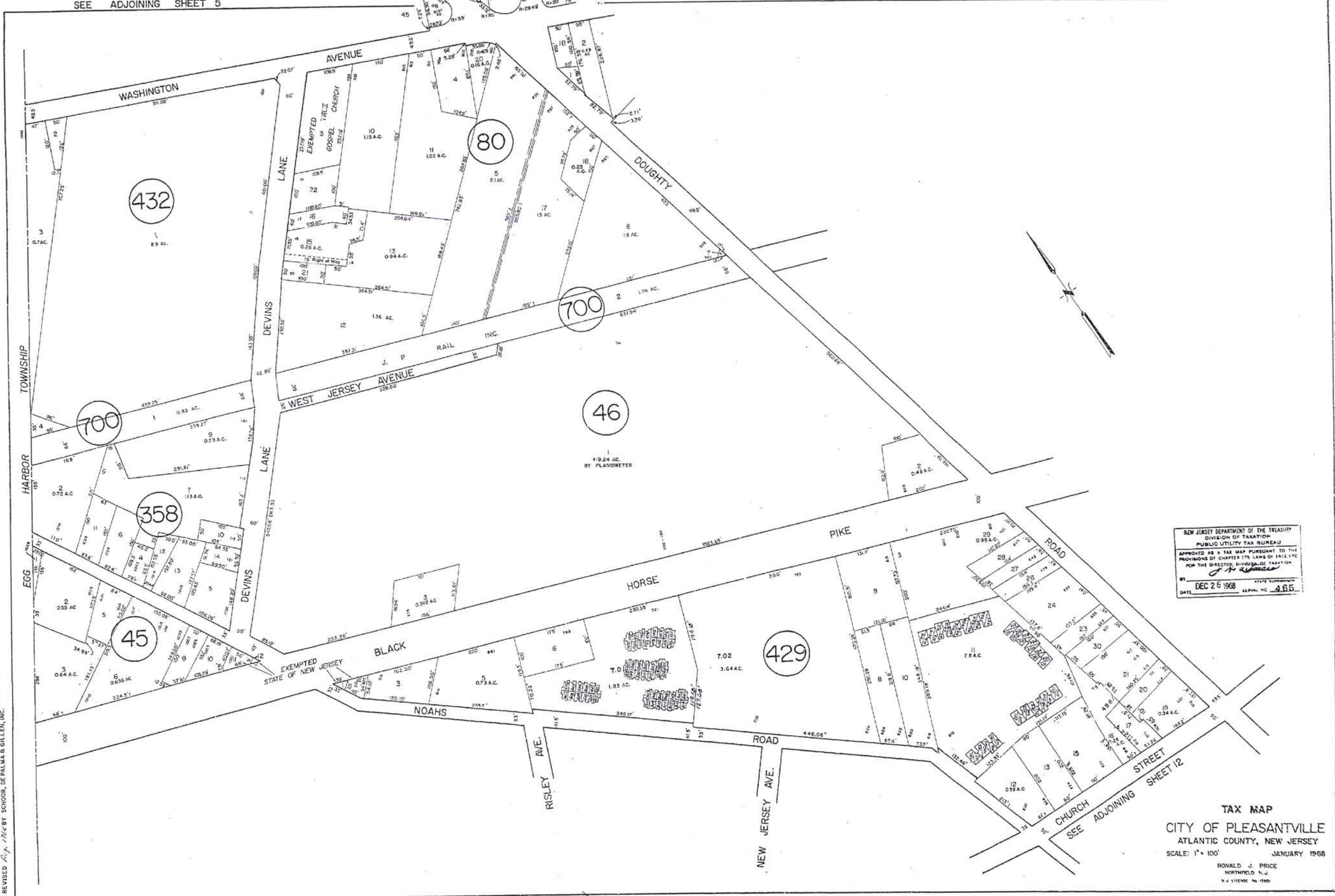
**NOTES**

514





SEE ADJOINING SHEET 5



NEW JERSEY DEPARTMENT OF THE TREASURY  
 DIVISION OF TAXATION  
 PUBLIC UTILITY TAX BUREAU  
 APPROVED AS A TAX MAP PURSUANT TO THE  
 PROVISIONS OF CHAPTER 175 LAWS OF 1913, ETC.  
 FOR THE DIRECTOR, DIVISION OF TAXATION  
*J. H. [Signature]*  
 BY DATE DEC 26 1968 SERIAL NO. 465

TAX MAP  
 CITY OF PLEASANTVILLE  
 ATLANTIC COUNTY, NEW JERSEY  
 SCALE: 1" = 100' JANUARY 1968  
 RONALD J. PRICE  
 NORTHFIELD, N.J.  
 S. J. [Signature]

REVISED TO MAR. 1, 1997 BY R. & V.  
 REVISED TO FEB. 1, 1995 BY R. & V.  
 REVISED TO MAR. 1, 1994 BY R. & V.  
 REVISED TO DEC. 31, 1991 BY R. & V.  
 REVISED TO DEC. 31, 1990 BY R. & V.  
 REVISED TO DEC. 31, 1989 BY F. A.  
 REVISED TO DEC. 31, 1988 BY F. A.  
 REVISED TO DEC. 31, 1987 BY F. A.  
 REVISED TO DEC. 31, 1986 BY F. A.  
 REVISED TO DEC. 31, 1985 BY SCHORR, DE PALMA & GILLEN, INC.  
 REVISED TO DEC. 31, 1984 BY SCHORR, DE PALMA & GILLEN, INC.

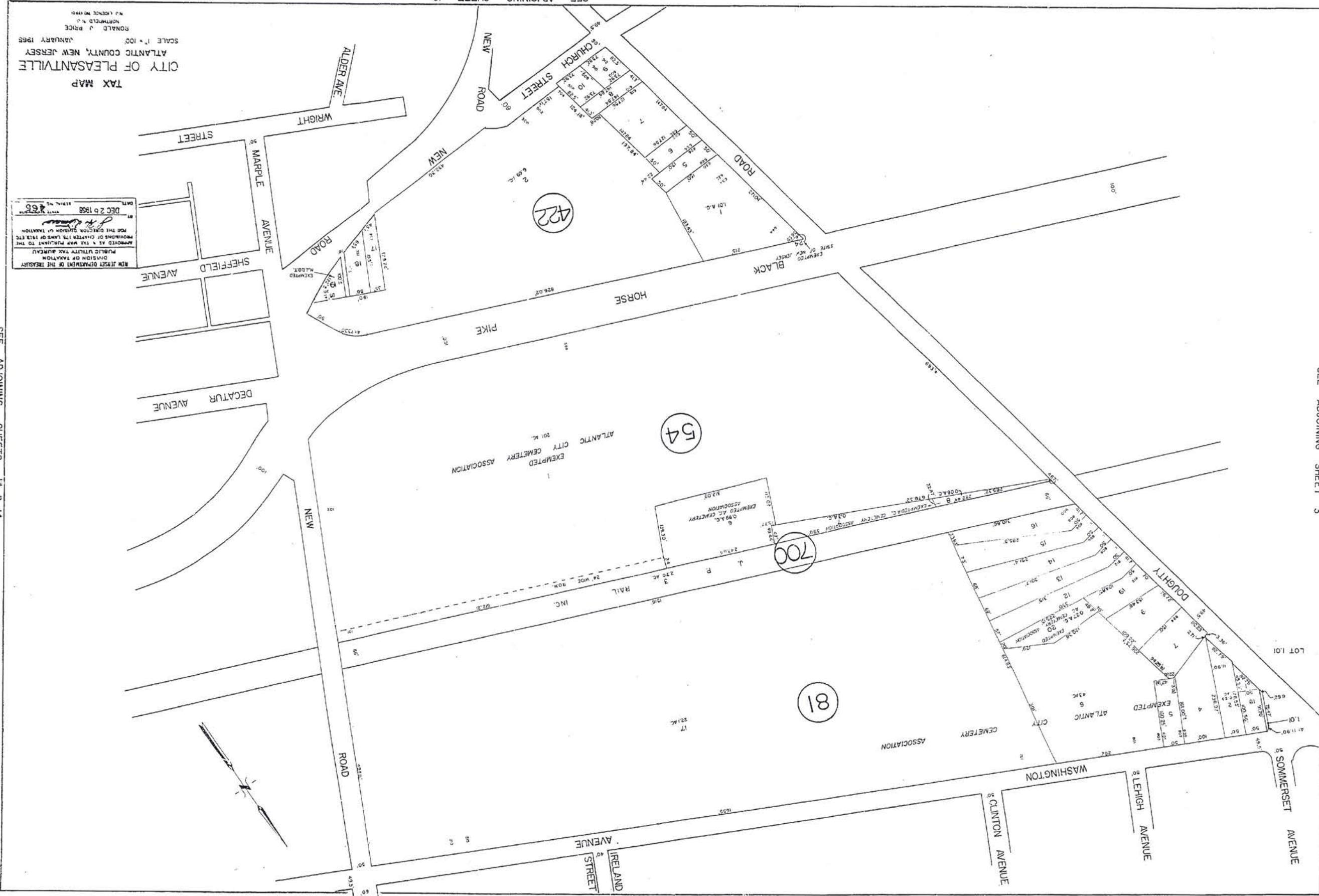
SEE ADJOINING SHEET 4

517

SEE ADJOINING SHEET 2

REVISED TO FEB. 1, 1995, BY R.B.V.  
 REVISED TO MAR. 1, 1994, BY R.V.  
 REVISED TO DEC. 31, 1989, BY R.V.  
 REVISED TO DEC. 31, 1987, BY F.R.A.  
 REVISED TO DEC. 31, 1986, BY F.R.A.  
 REVISED TO DEC. 31, 1985, BY SCHORR, DE PALMA & GILLEN, INC.

SEE ADJOINING SHEET 3



TAX MAP  
 CITY OF PLEASANTVILLE  
 ATLANTIC COUNTY, NEW JERSEY  
 SCALE 1" = 100'  
 JANUARY 1985  
 RONALD J. PRICE  
 MAPMAKER

NEW JERSEY DEPARTMENT OF THE TREASURY  
 DIVISION OF TAXATION  
 PUBLIC UTILITY TAX BUREAU  
 APPROVED AS A TAX MAP PURSUANT TO THE  
 PROVISIONS OF CHAPTER 178, LAWS OF 1973 ETC.  
 FOR THE DIVISION OF TAXATION  
 DATE: DEC 20 1988  
 BY: [Signature]

SEE ADJOINING SHEETS 13 & 14

SEE ADJOINING SHEETS 5 & 6

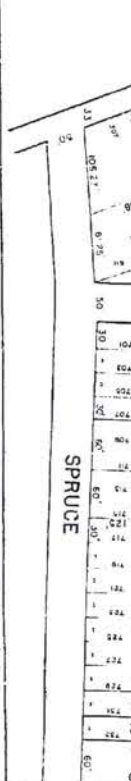
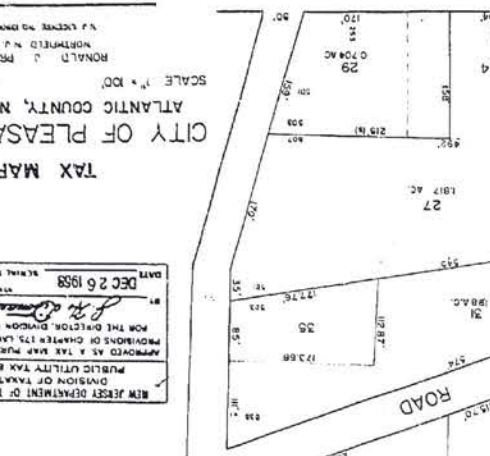
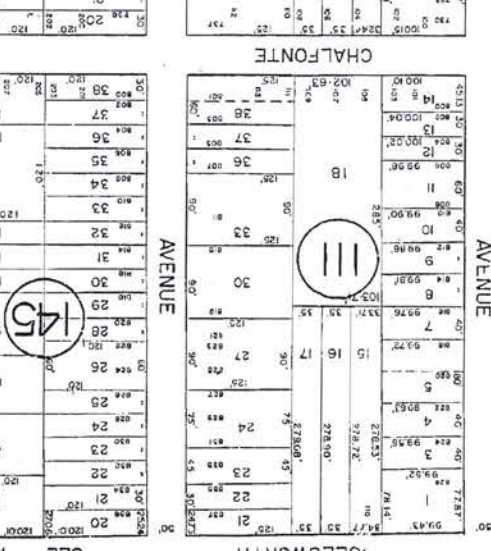
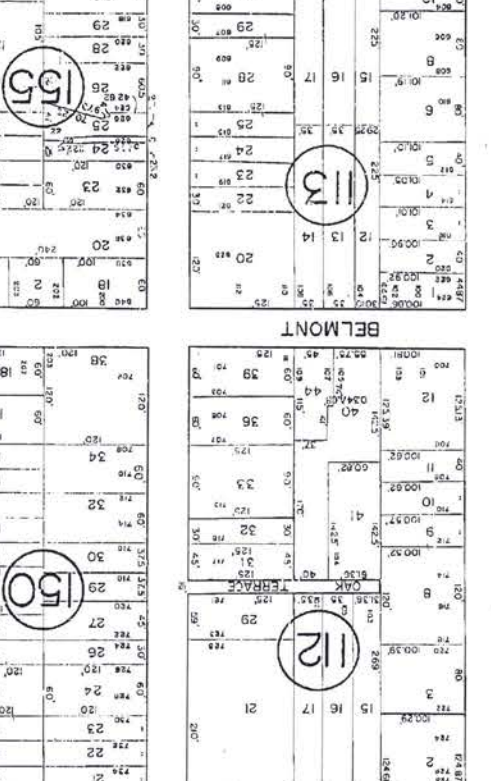
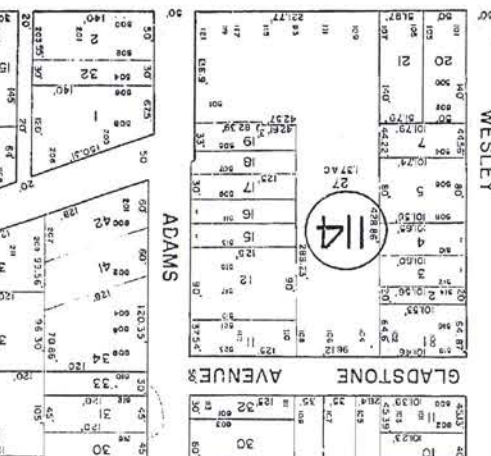
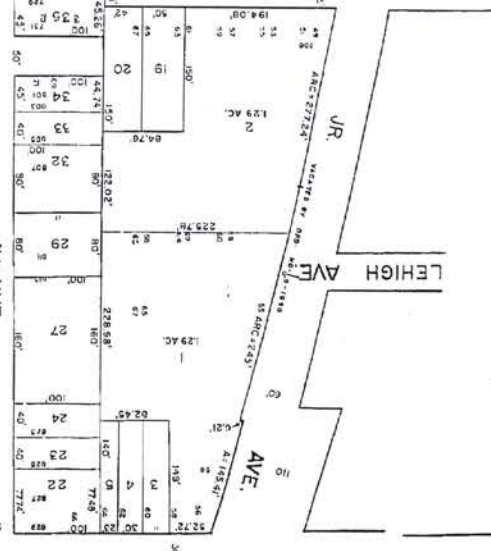
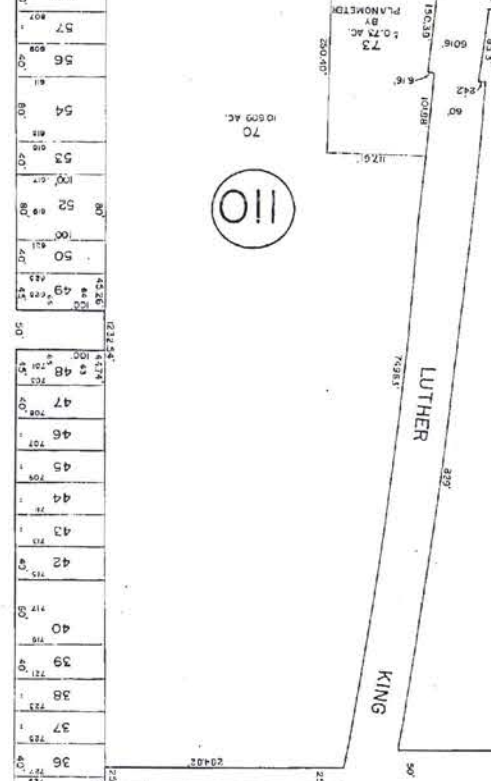
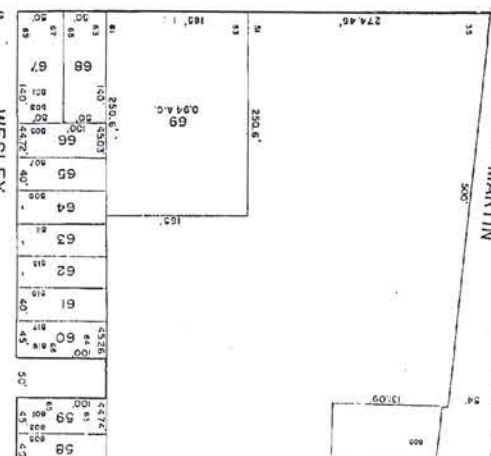
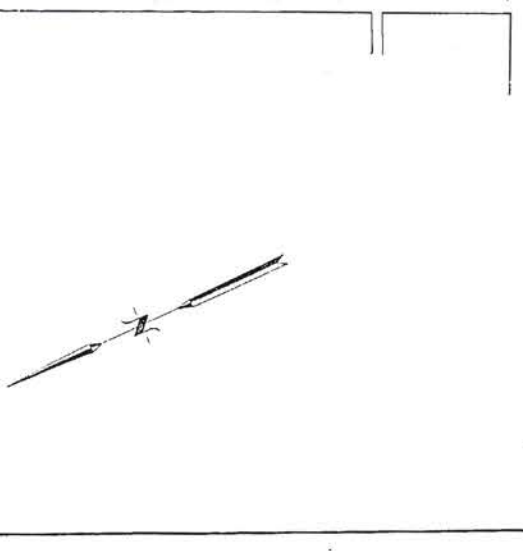
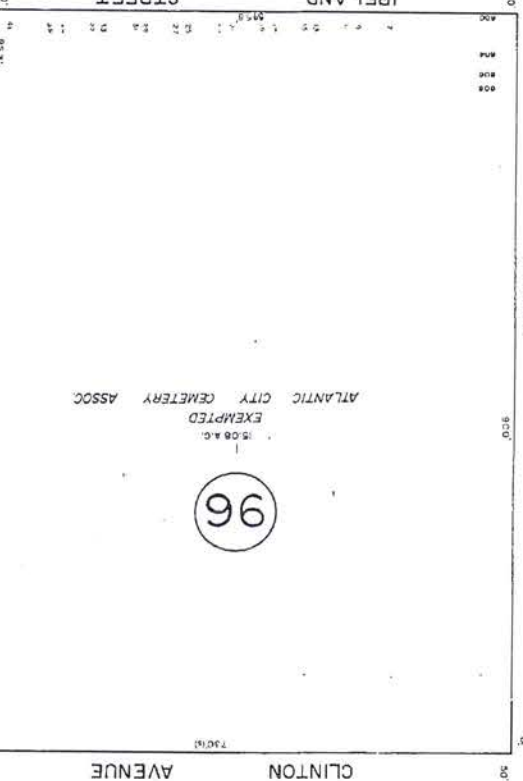
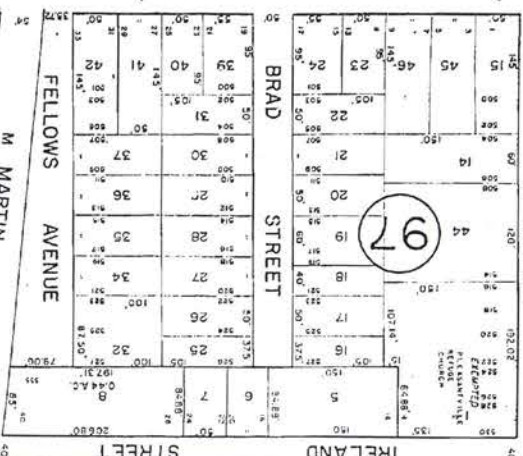




REVISED TO MAR. 1, 1927 BY R. & V.  
 REVISED TO MAR. 1, 1926 BY R. & V.  
 REVISED TO DEC. 31, 1924 BY R. & V.  
 REVISED TO DEC. 31, 1923 BY R. & V.  
 REVISED TO DEC. 31, 1922 BY R. & V.  
 REVISED TO DEC. 31, 1921 BY R. & V.  
 REVISED TO DEC. 31, 1920 BY R. & V.  
 REVISED TO DEC. 31, 1919 BY R. & V.  
 REVISED TO DEC. 31, 1918 BY R. & V.  
 REVISED TO DEC. 31, 1917 BY R. & V.  
 REVISED TO DEC. 31, 1916 BY R. & V.

WASHINGTON

SEE ADJOINING SHEET 4 B 5  
 AVENUE



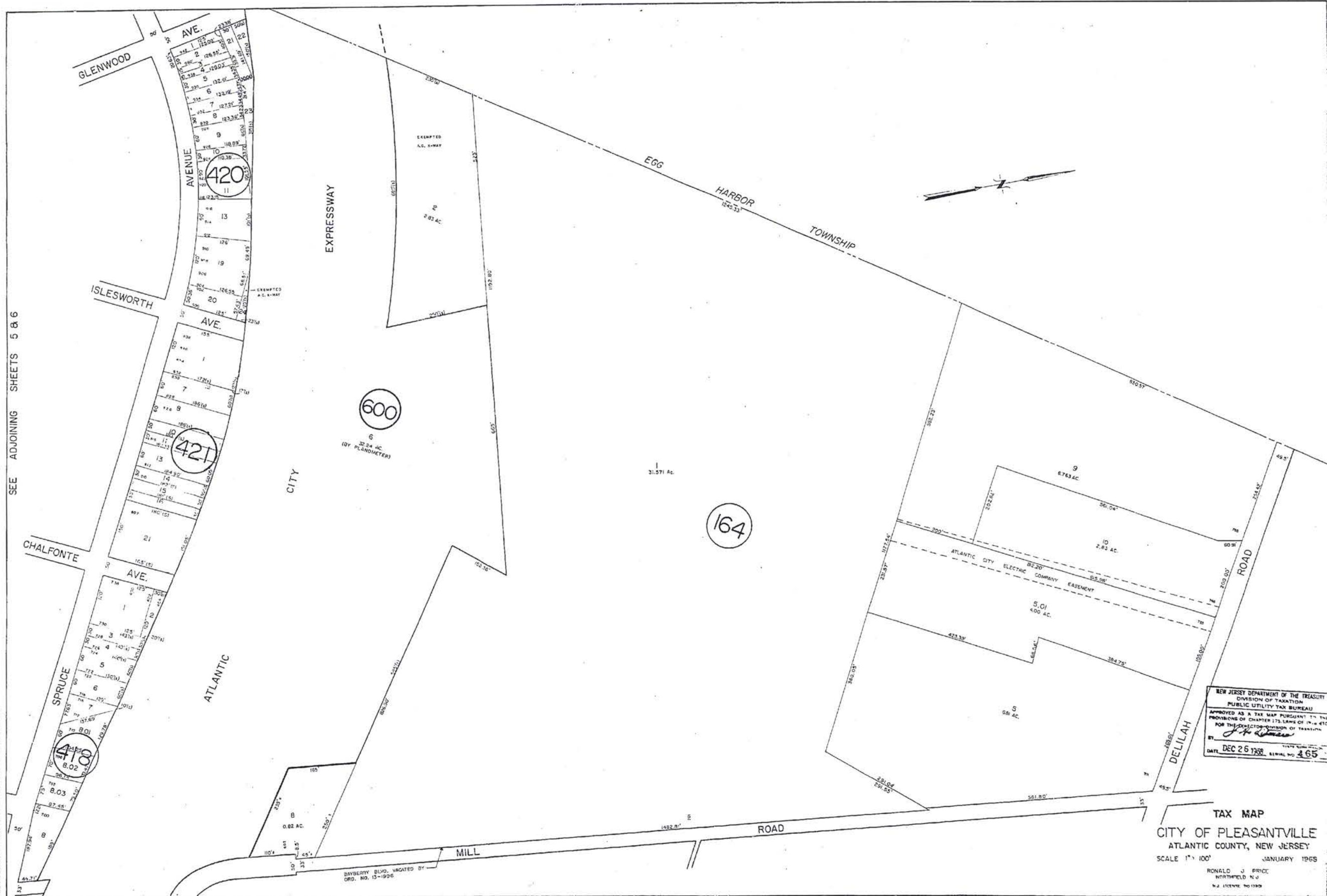
CITY OF PEASANTVILLE  
 TAX MAP  
 SCALE 1" = 100'  
 JANUARY 1925  
 RONALD J. PRICE  
 NORTHFIELD N.Y.  
 SURVEYOR

NEW JERSEY DEPARTMENT OF THE TREASURY  
 DIVISION OF TAXATION  
 PUBLIC UTILITY TAX BUREAU  
 APPROVED AS A TAX MAP PURSUANT TO THE  
 PROVISIONS OF CHAPTER 173, L.A.S. 1913 ETC.  
 FOR THE DIVISION OF TAXATION  
 DATE DEC 26 1928  
 465

SEE ADJOINING SHEETS 7 & 8

REVISED TO MAR. 1, 1997 BY R. & V.  
 REVISED TO FEB. 1, 1995 BY R. & V.  
 REVISED TO DEC. 31, 1991 BY R. & V.  
 REVISED TO DEC. 31, 1987 BY R. & V.  
 REVISED TO DEC. 31, 1986 BY F.R.A.  
 REVISED TO DEC. 31, 1985 BY F.R.A.  
 REVISED 3/22/84 BY SCHOOR, DE PALMA & GILLEN, INC.

SEE ADJOINING SHEETS 5 & 6



NEW JERSEY DEPARTMENT OF THE TREASURY  
 DIVISION OF TAXATION  
 PUBLIC UTILITY TAX BUREAU  
 APPROVED AS A TAX MAP PURSUANT TO THE  
 PROVISIONS OF CHAPTER 172, LAWS OF 1944, ETC.  
 FOR THE DIRECTOR, DIVISION OF TAXATION  
*J. H. [Signature]*  
 DATE DEC 25 1988 SERIAL NO 465

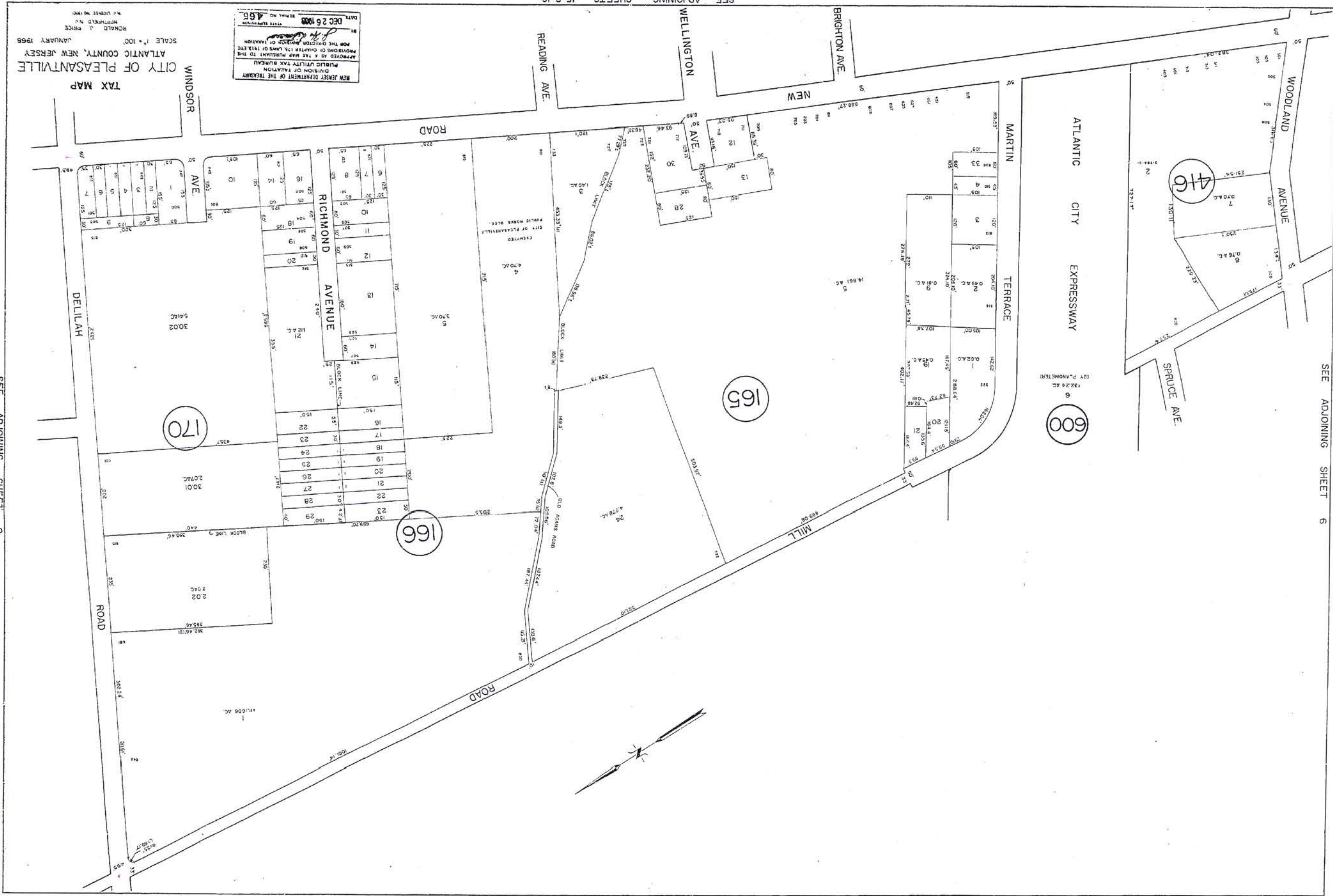
TAX MAP  
 CITY OF PLEASANTVILLE  
 ATLANTIC COUNTY, NEW JERSEY  
 SCALE 1" = 100' JANUARY 1988  
 RONALD J. PRICE  
 NORTHFIELD, N.J.  
 N.J. LICENSE NO 1389

SEE ADJOINING SHEET 8

SEE ADJOINING SHEET 9

REVISED TO MAR. 1, 1997 BY R. R. V.  
 REVISED TO MAR. 1, 1996 BY R. V.  
 REVISED TO DEC. 31, 1991 BY R. V.  
 REVISED TO DEC. 31, 1990 BY R. V.  
 REVISED TO DEC. 31, 1988 BY F.R.A.  
 REVISED TO DEC. 31, 1987 BY F.R.A.  
 REVISED TO DEC. 31, 1986 BY F.R.A.  
 REVISED TO DEC. 31, 1985 BY F.R.A.  
 BY SCHOOL, DE PALMA & GILLEN, INC.

SEE ADJOINING SHEET 6

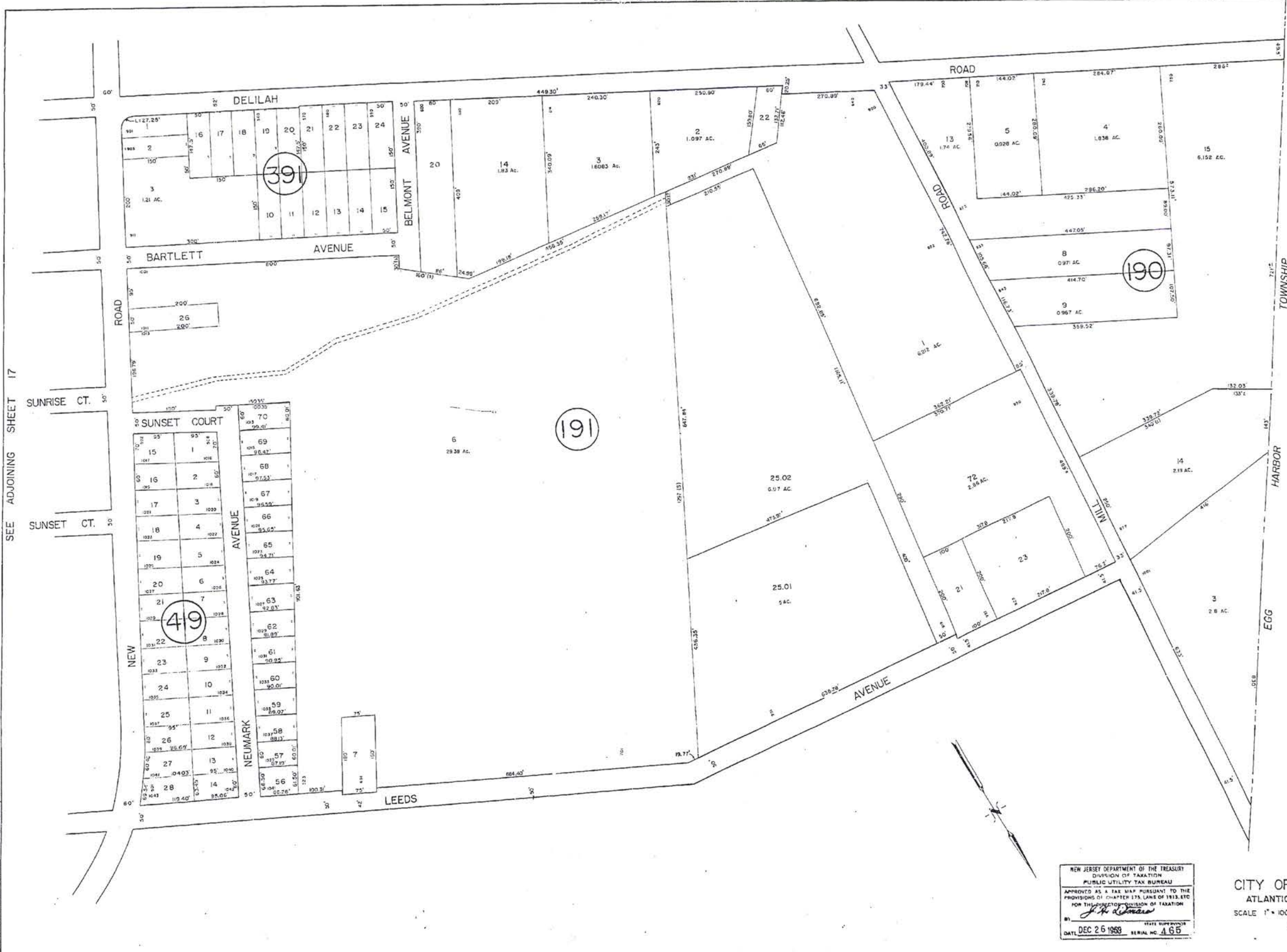


SEE ADJOINING SHEET 7

CITY OF PLEASANTVILLE  
 ATLANTIC COUNTY, NEW JERSEY  
 TAX MAP  
 SCALE 1" = 100'  
 JANUARY 1985  
 RONALD J. PRICE  
 MUNICIPAL ENGINEER

SEE ADJOINING SHEET 9

522



SEE ADJOINING SHEET 17

REVISED TO MAR. 1, 1997 BY R. & V.  
 REVISED TO MAR. 1, 1995 BY R.V.  
 REVISED TO MAR. 1, 1994 BY R.V.  
 REVISED TO DEC. 31, 1991 BY R.V.  
 REVISED TO DEC. 31, 1989 BY F.R.A.  
 REVISED TO DEC. 31, 1987 BY F.R.A.  
 REVISED TO DEC. 31, 1986 BY F.R.A.  
 REVISED TO DEC. 31, 1985 BY F.R.A.

BY SCHROEDER, DE PALMA & GILLEN, INC.

NEW JERSEY DEPARTMENT OF THE TREASURY  
 DIVISION OF TAXATION  
 PUBLIC UTILITY TAX BUREAU  
 APPROVED AS A TAX MAP PURSUANT TO THE  
 PROVISIONS OF CHAPTER 175, LAWS OF 1915, ETC.  
 FOR THE PURPOSES OF DIVISION OF TAXATION  
*J. H. [Signature]*  
 DATE: DEC 26 1993 SERIAL NO. 465

TAX MAP  
 CITY OF PLEASANTVILLE  
 ATLANTIC COUNTY, NEW JERSEY  
 SCALE 1" = 100' JANUARY 1998  
 RONALD J. PRICE  
 NORTHFIELD, N.J.  
 N.J. LICENSE NO. 12903



SEE ADJOINING SHEETS 1 & 2



NEW JERSEY DEPARTMENT OF THE TREASURY  
 DIVISION OF TAXATION  
 PUBLIC UTILITY TAX BUREAU  
 APPROVED AS A TAX MAP PURSUANT TO THE  
 PROVISIONS OF CHAPTER 315, LAWS OF 1913, ETC.  
 FOR THE DIRECTOR, DIVISION OF TAXATION  
 BY: *J. H. Gillen*  
 DATE DEC 25 1965 SERIAL NO. 465

REVISED TO MAR. 1, 1937 BY R. A. V.  
 TO MAR. 1, 1938 BY R. V.  
 TO MAR. 1, 1939 BY R. V.  
 TO MAR. 1, 1944 BY R. V.  
 TO DEC. 31, 1951 BY R. V.  
 TO DEC. 31, 1953 BY R. V.  
 TO DEC. 31, 1955 BY R. V.  
 TO DEC. 31, 1958 BY R. V.  
 TO DEC. 31, 1961 BY R. V.  
 TO DEC. 31, 1965 BY R. V.  
 REVISED BY SENIOR DE SALAS & GILLEN, INC.  
 REVISED BY SENIOR DE SALAS & GILLEN, INC.

TAX MAP  
 CITY OF PLEASANTVILLE  
 ATLANTIC COUNTY, NEW JERSEY  
 SCALE 1" = 100'  
 JANUARY 1966  
 RONALD J. PRICE  
 NORTHFIELD, N.J.  
 N. J. LICENSE NO. 1284

SEE ADJOINING SHEET 12

SEE ADJOINING SHEET 19

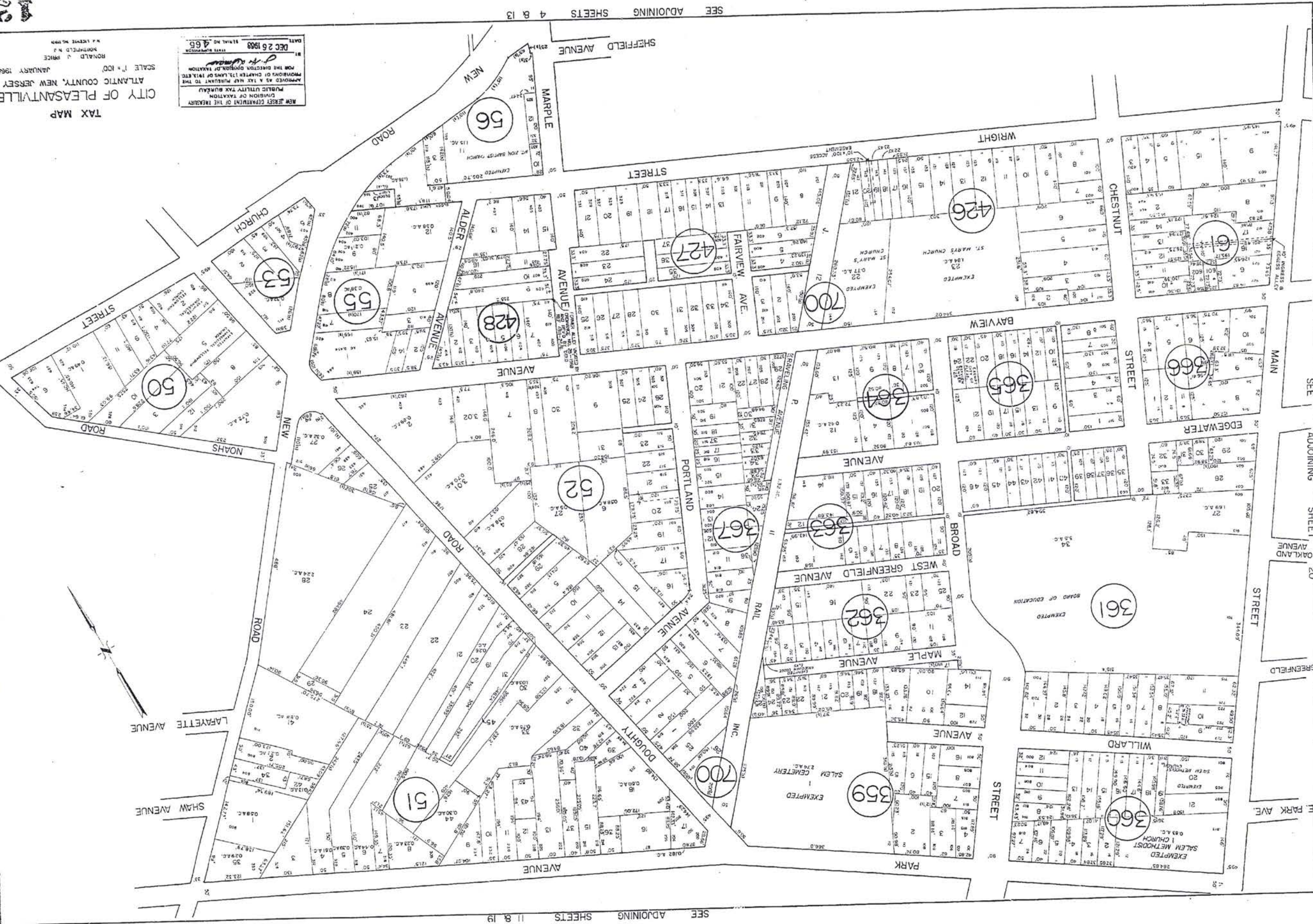
REVISED TO MAR. 1, 1937 BY R. & V.  
REVISED TO MAR. 1, 1935 BY R. & V.  
REVISED TO FEB. 1, 1933 BY R. & V.  
REVISED TO MAR. 1, 1931 BY R. & V.  
REVISED TO DEC. 31, 1929 BY F.R.A.  
REVISED TO DEC. 31, 1928 BY F.R.A.  
REVISED TO DEC. 31, 1927 BY F.R.A.  
REVISED TO DEC. 31, 1926 BY F.R.A.  
REVISED TO DEC. 31, 1925 BY F.R.A.

CITY OF PLEASANTVILLE  
TAX MAP  
SCALE 1" = 100'  
JANUARY 1966  
RONALD J. PRICE  
PLANNING ENGINEER  
1010 NORTHFIELD N.J.  
N.J. LICENSE NO. 10198

NEW JERSEY DEPARTMENT OF THE TREASURY  
DIVISION OF TAXATION  
PUBLIC UTILITY TAX BUREAU  
APPROVED AS A TAX MAP SUBMITTAL TO THE  
COMMISSIONER OF TAXATION  
DATE: DEC 26 1958  
STAMP NO. 466

SEE ADJOINING SHEETS 4 8 13

SEE ADJOINING SHEETS 11 8 19



SEE ADJOINING SHEET 2

SEE ADJOINING SHEET 20

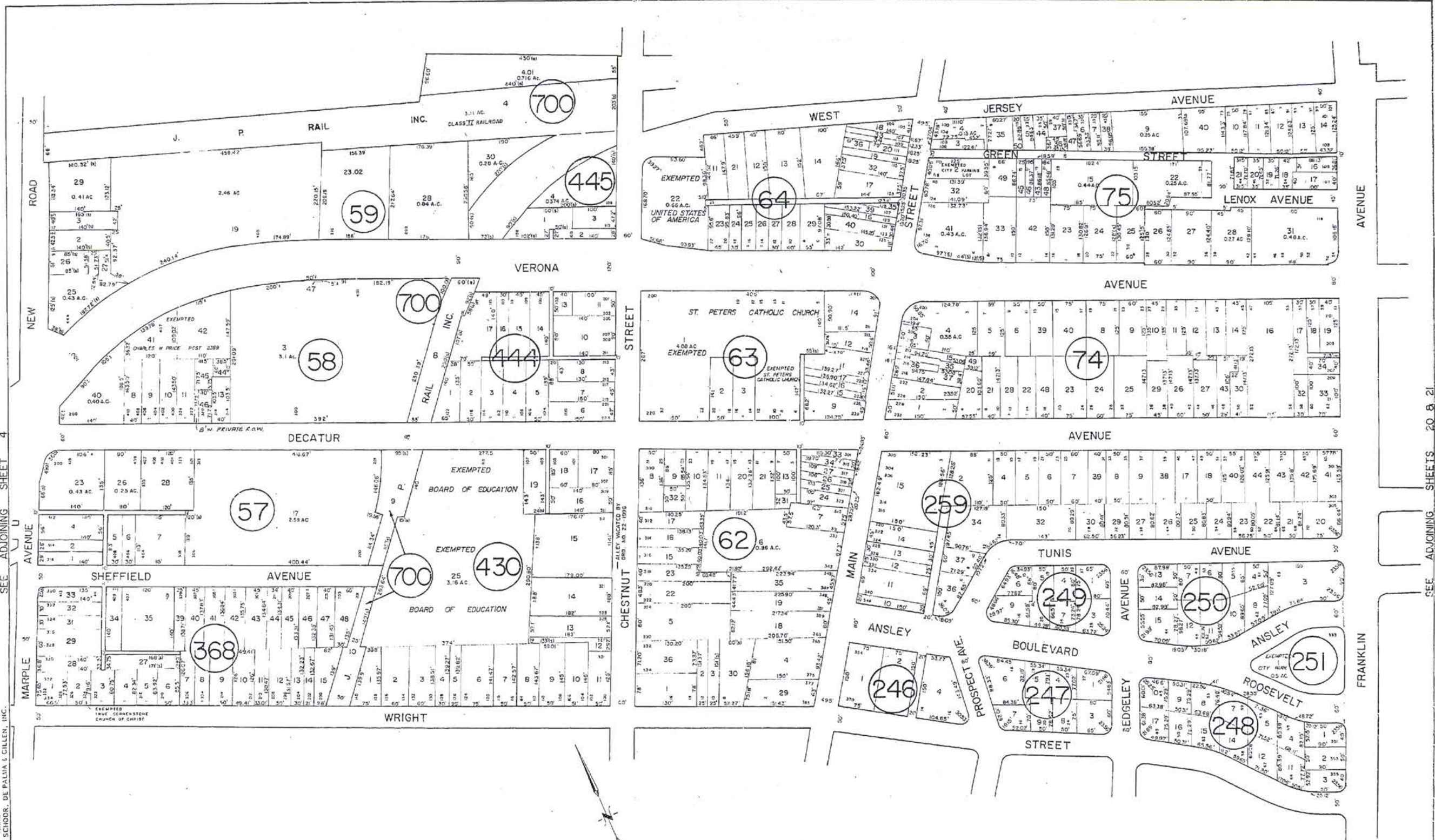
526

12

12



SEE ADJOINING SHEET 14



SEE ADJOINING SHEET 4

SEE ADJOINING SHEETS 20 & 21

527

REVISED TO MAR. 1, 1997 BY R. & V.  
 REVISED TO MAR. 1, 1996 BY R. & V.  
 REVISED TO MAR. 1, 1995 BY R. & V.  
 REVISED TO MAR. 1, 1994 BY R. & V.  
 REVISED TO DEC. 31, 1993 BY R. & V.  
 REVISED TO DEC. 31, 1992 BY R. & V.  
 REVISED TO DEC. 31, 1991 BY R. & V.  
 REVISED TO DEC. 31, 1990 BY R. & V.  
 REVISED TO DEC. 31, 1989 BY R. & V.  
 REVISED TO DEC. 31, 1988 BY R. & V.  
 REVISED TO DEC. 31, 1987 BY R. & V.  
 REVISED TO DEC. 31, 1986 BY R. & V.  
 REVISED TO DEC. 31, 1985 BY R. & V.

SEE ADJOINING SHEETS 12 & 20

NEW JERSEY DEPARTMENT OF THE TREASURY  
 DIVISION OF TAXATION  
 PUBLIC UTILITY TAX BUREAU  
 APPROVED AS A TAX MAP PURSUANT TO THE  
 PROVISIONS OF CHAPTER 176, LAWS OF 1913, ETC.  
 FOR THE DIRECTOR, DIVISION OF TAXATION  
 BY: *[Signature]*  
 DATE: DEC 26 1968 STATE SUPPLY NO. 465

TAX MAP  
 CITY OF PLEASANTVILLE  
 ATLANTIC COUNTY, NEW JERSEY  
 SCALE 1" = 100' JANUARY 1968  
 RONALD J. PRICE  
 NORTHFIELD, N.J.  
 N.J. LICENSE NO. 11901



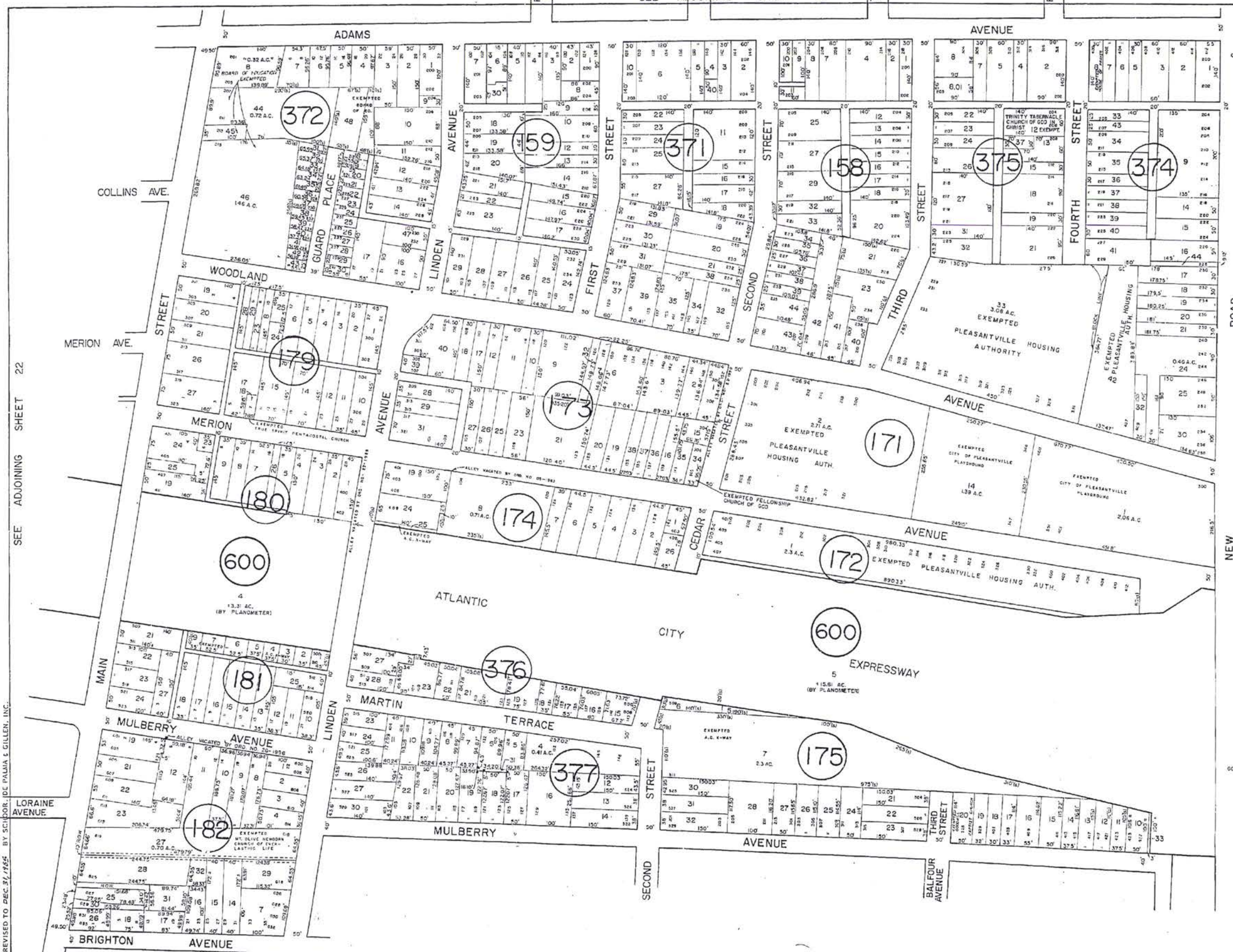
SEE ADJOINING SHEET 14

SEE ADJOINING SHEET 22

SEE ADJOINING SHEETS 6 & 8

REVISED TO MAR. 1, 1987 BY R. & V.  
 REVISED TO MAR. 1, 1986 BY R.V.  
 REVISED TO MAR. 1, 1985 BY R.V.  
 REVISED TO MAR. 1, 1984 BY R.V.  
 REVISED TO DEC. 31, 1981 BY R.V.  
 REVISED TO DEC. 31, 1980 BY R.V.  
 REVISED TO DEC. 31, 1979 BY F.R.A.  
 REVISED TO DEC. 31, 1978 BY F.R.A.  
 REVISED TO DEC. 31, 1986 BY F.R.A.  
 REVISED TO DEC. 31, 1985 BY F.R.A.  
 REVISED TO DEC. 31, 1984 BY F.R.A.

BY SCHUBB, DE PALMA & GILLEN, INC.

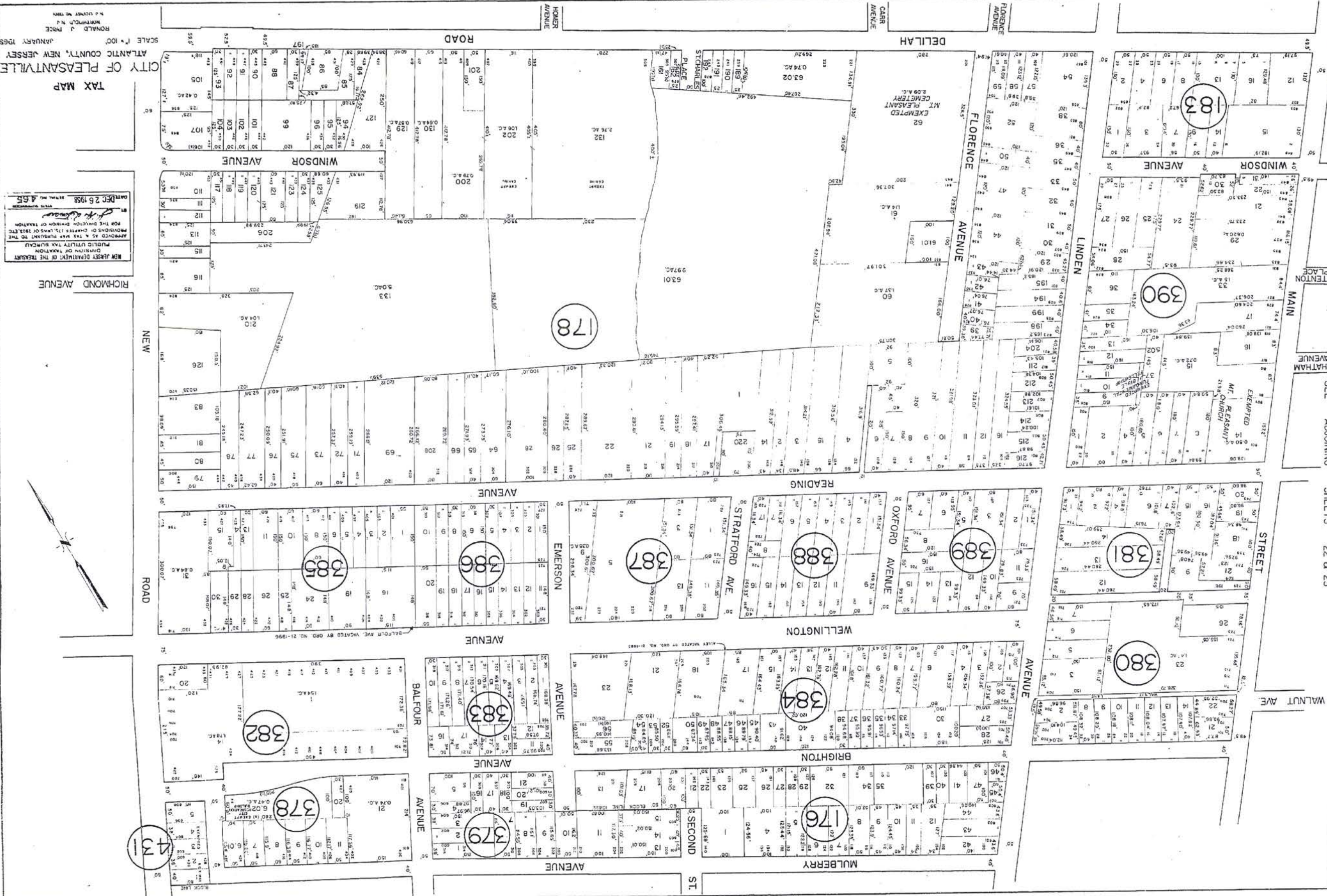


NEW JERSEY DEPARTMENT OF THE TREASURY  
 DIVISION OF TAXATION  
 PUBLIC UTILITY TAX BUREAU  
 APPROVED AS A TAX MAP PURSUANT TO THE  
 PROVISIONS OF CHAPTER 175, LAWS OF 1982 (L. 175)  
 FOR THE DIRECTOR, DIVISION OF TAXATION  
 BY *J. H. Dineen*  
 DATE DEC 26 1988 STATE SUPPLEMENTAL  
 SERIAL N. 465

TAX MAP  
 CITY OF PLEASANTVILLE  
 ATLANTIC COUNTY, NEW JERSEY  
 SCALE 1" = 100'  
 JANUARY 1985  
 RONALD J. PRICE  
 NORTHFIELD, N.J.  
 N.J. LICENSE NO. 1260

SEE ADJOINING SHEET 16

REVISED TO MAR. 1, 1937 BY R. & V.  
 REVISED TO MAR. 1, 1938 BY R. & V.  
 REVISED TO MAR. 1, 1939 BY R. & V.  
 REVISED TO DEC. 31, 1941 BY R. & V.  
 REVISED TO DEC. 31, 1946 BY R. & V.  
 REVISED TO DEC. 31, 1948 BY F. R. A.  
 REVISED TO DEC. 31, 1957 BY F. R. A.  
 REVISED TO DEC. 31, 1968 BY F. R. A.  
 REVISED TO DEC. 31, 1969 BY F. R. A.  
 BY STUBBS, DE PALMA & COLLEN, INC.



SEE ADJOINING SHEET 15

SEE ADJOINING SHEET 17

SEE ADJOINING SHEETS 22 & 23

CITY OF PLEASANTVILLE  
 TAX MAP  
 SCALE 1" = 100'  
 JANUARY 1969  
 RONALD J. PRICE  
 MUNICIPAL ENGINEER

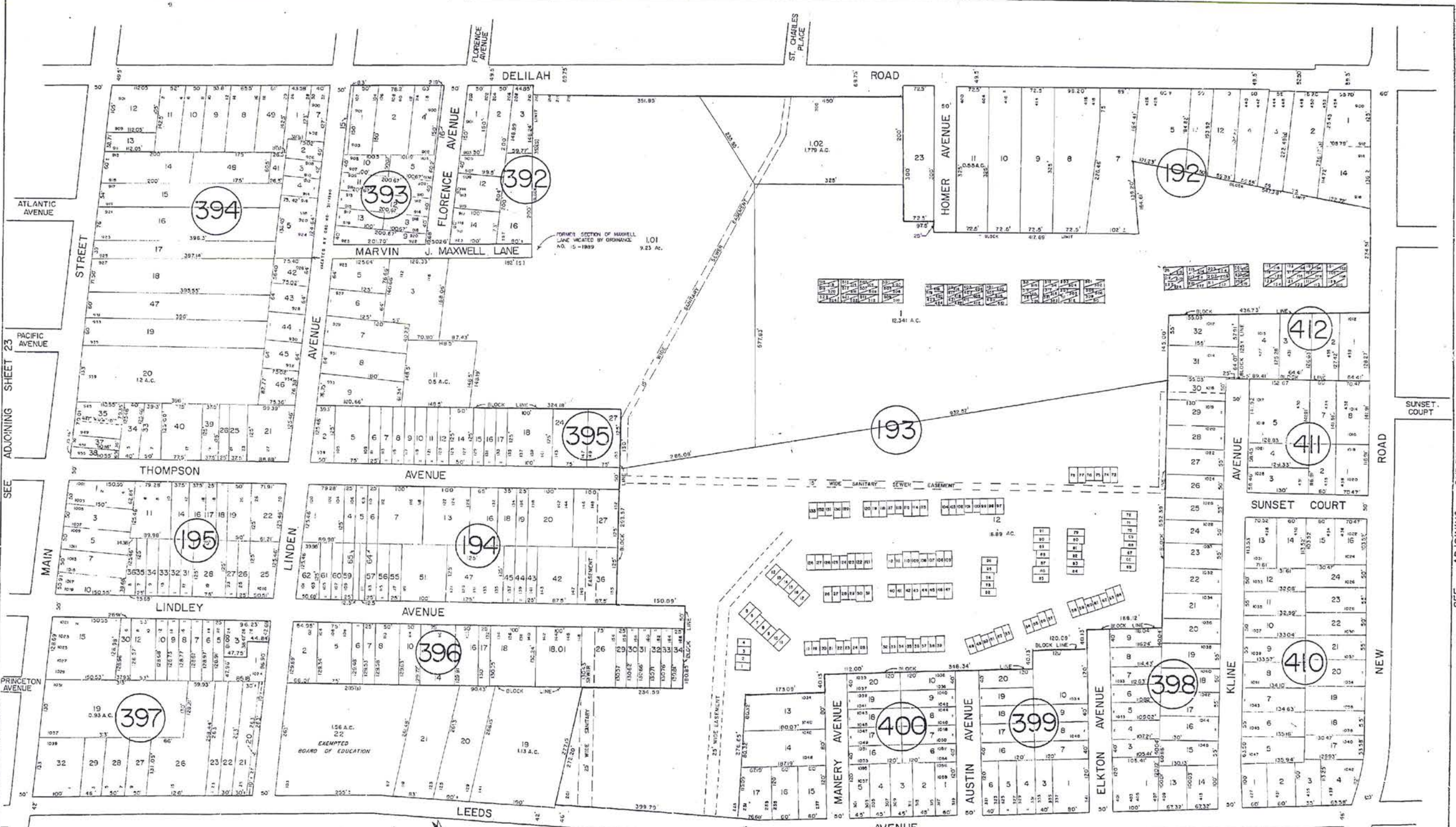
NEW ASSESSMENT DIVISION OF THE TREASURY  
 DIVISION OF TAXATION  
 APPROVED AS A TAX MAP PURSUANT TO THE  
 PROVISIONS OF CHAPTER 125, ARS OF 1952, ETC.  
 FOR THE DIRECTOR, DIVISION OF TAXATION  
 DATE DEC 26 1968  
 ATTORNEY GENERAL  
 455

SEE ADJOINING SHEET 8

530

165

165



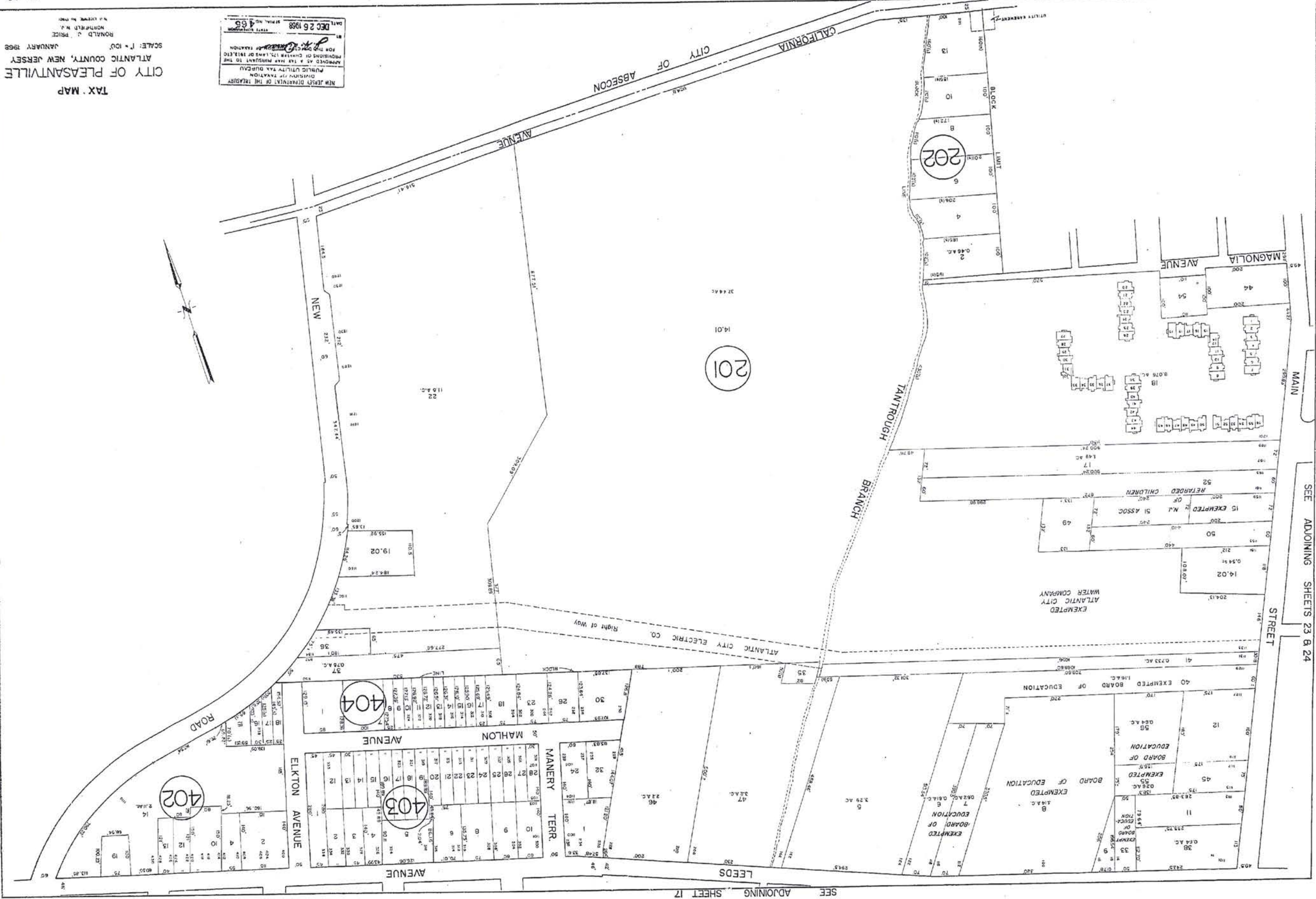
REVISED TO MAR. 1, 1997 BY R. & V.  
 REVISED TO MAR. 1, 1998 BY R. & V.  
 REVISED TO FEB. 1, 1995 BY R. & V.  
 REVISED TO MAR. 1, 1994 BY R. & V.  
 REVISED TO DEC. 31, 1990 BY R. & V.  
 REVISED TO DEC. 31, 1989 BY R. & V.  
 REVISED TO DEC. 31, 1988 BY R. & V.  
 REVISED TO DEC. 31, 1987 BY R. & V.  
 REVISED TO DEC. 31, 1986 BY R. & V.  
 REVISED TO DEC. 31, 1985 BY R. & V.

NEW JERSEY DEPARTMENT OF THE TREASURY  
 DIVISION OF TAXATION  
 PUBLIC UTILITY TAX BUREAU  
 APPROVED AS A TAX MAP PURSUANT TO THE  
 PROVISIONS OF CHAPTER 115, LAWS OF 1913, ETC.  
 FOR THE DIRECTOR, DIVISION OF TAXATION  
*R. J. Price*  
 DATE DEC 26 1988 SERIAL NO. 465

TAX MAP  
 CITY OF PLEASANTVILLE  
 ATLANTIC COUNTY, NEW JERSEY  
 SCALE: 1" = 100'  
 JANUARY 1988  
 RONALD J. PRICE  
 NORTHFIELD, N.J.  
 N. J. LICENSE NO. 1280

REVISED TO MAR. 1, 1997 BY R. & V.  
 REVISED TO MAR. 1, 1996 BY R. & V.  
 REVISED TO FEB. 1, 1995 BY R. & V.  
 REVISED TO MAR. 1, 1994 BY R. & V.  
 REVISED TO MAR. 1, 1993 BY R. & V.  
 REVISED TO DEC. 31, 1990 BY R. & V.  
 REVISED TO DEC. 31, 1989 BY F.R.A.  
 REVISED TO DEC. 31, 1988 BY F.R.A.  
 REVISED TO DEC. 31, 1987 BY F.R.A.  
 REVISED TO DEC. 31, 1986 BY F.R.A.

SEE ADJOINING SHEETS 23 & 24



NEW JERSEY DEPARTMENT OF THE TREASURY  
 DIVISION OF TAXATION  
 PUBLIC UTILITY TAX BUREAU  
 APPROVED AS A TAX MAP PURSUANT TO THE  
 PROVISIONS OF CHAPTER 127, LANS OF 1982  
 FOR THE DISTRICT OF TAXATION  
 DATE: DEC 26 1988  
 SERIAL NO. 468

TAX MAP  
 CITY OF PLEASANTVILLE  
 ATLANTIC COUNTY, NEW JERSEY  
 SCALE: 1" = 100'  
 JANUARY 1988  
 RONALD J. PRICE  
 NORTHFIELD N.J.  
 N.J. LICENSE NO. 1002

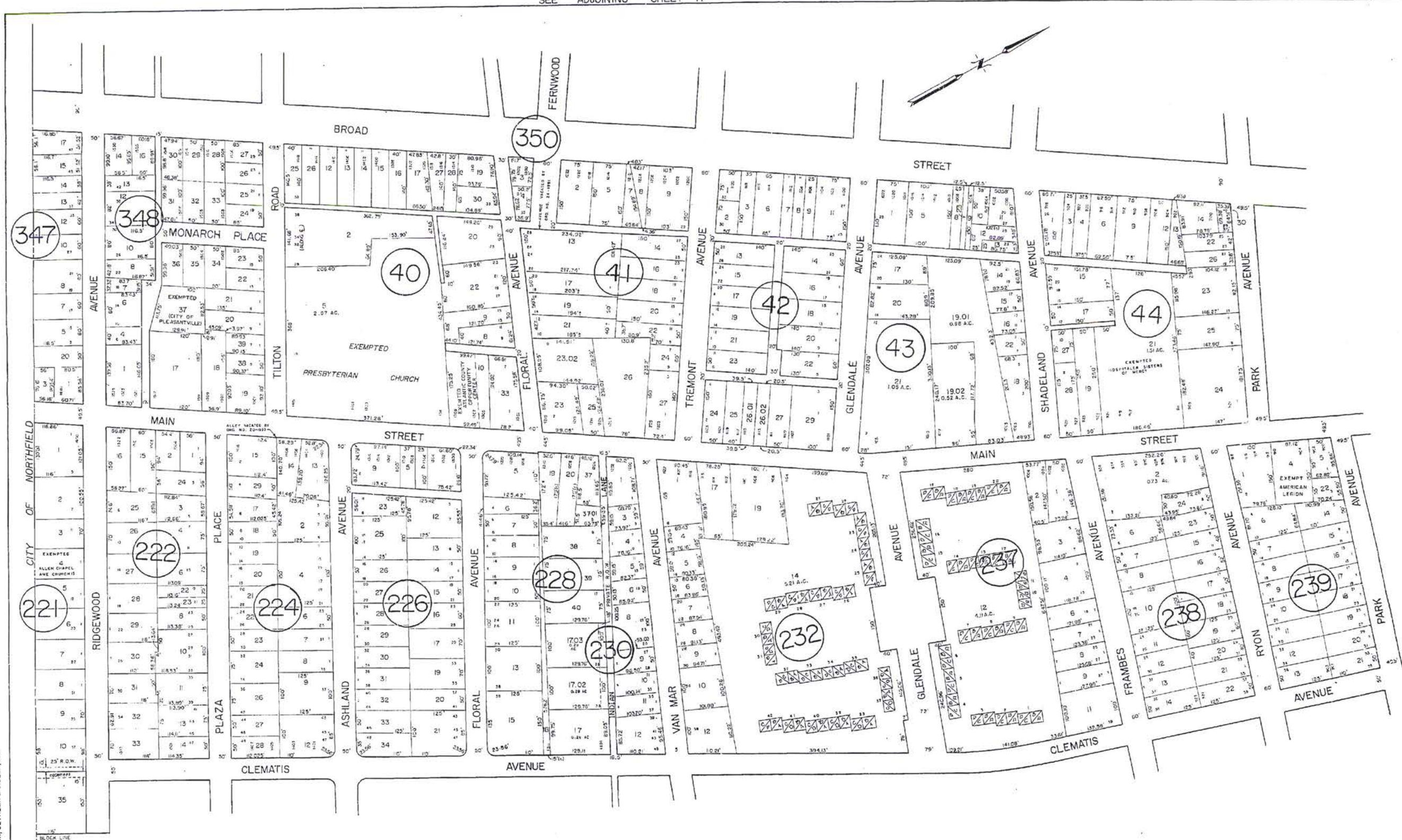
SEE ADJOINING SHEET 10

532

133

SEE ADJOINING SHEET 17

SEE ADJOINING SHEET 11



REVISED TO MAR. 1, 1937 BY R. & V.  
 REVISED TO FEB. 1, 1951 BY R. & V.  
 REVISED TO MAR. 1, 1954 BY R. & V.  
 REVISED TO DEC. 31, 1951 BY R. & V.  
 REVISED TO DEC. 31, 1950 BY R. & V.  
 REVISED TO DEC. 31, 1953 BY R. & V.  
 REVISED TO DEC. 31, 1967 BY R. & V.  
 REVISED TO DEC. 31, 1966 BY F. & G.  
 REVISED TO DEC. 31, 1965 BY F. & G.  
 REVISED BY SCHORR, DE PALMA & GILLEN, INC.

NEW JERSEY DEPARTMENT OF THE TREASURY  
 DIVISION OF TAXATION  
 PUBLIC UTILITY TAX BUREAU  
 APPROVED AS A TAX MAP PURSUANT TO THE  
 PROVISIONS OF CHAPTER 175, LAWS OF 1913, ETC.  
 FOR THE DIRECTOR, DIVISION OF TAXATION  
*J. H. Doman*  
 DEC 26 1968 STATE TAXATION  
 SERIAL NO. 485

TAX MAP  
 CITY OF PLEASANTVILLE  
 ATLANTIC COUNTY, NEW JERSEY  
 SCALE: 1" = 100'  
 JANUARY 1968  
 RONALD J. PRICE  
 NORTHFIELD, N. J.  
 N. J. LICENSE NO. 950

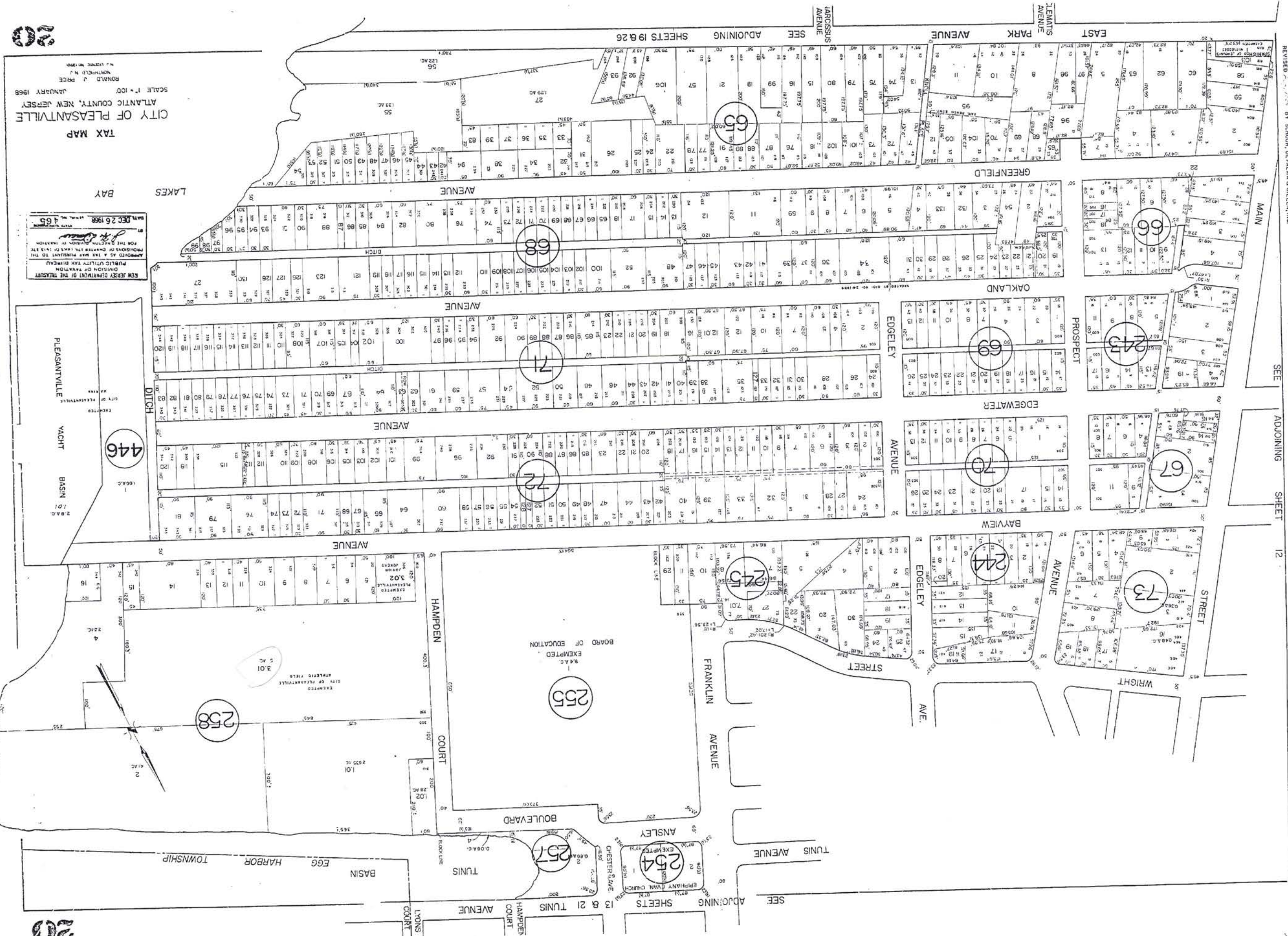
SEE ADJOINING SHEETS 12 & 20

533

SEE ADJOINING SHEET 26

REVISED TO MAR. 1, 1997 BY R. & V.  
 REVISED TO MAR. 1, 1996 BY R. & V.  
 REVISED TO MAR. 1, 1994 BY R. & V.  
 REVISED TO DEC. 31, 1991 BY R. & V.  
 REVISED TO DEC. 31, 1989 BY F.R.A.  
 REVISED TO DEC. 31, 1987 BY F.R.A.  
 REVISED TO DEC. 31, 1986 BY F.R.A.  
 REVISED TO DEC. 31, 1985 BY F.R.A.  
 REVISED TO DEC. 31, 1985 BY SCHOOL, DE PALMA & GILLEN, INC.

SEE ADJOINING SHEET 12



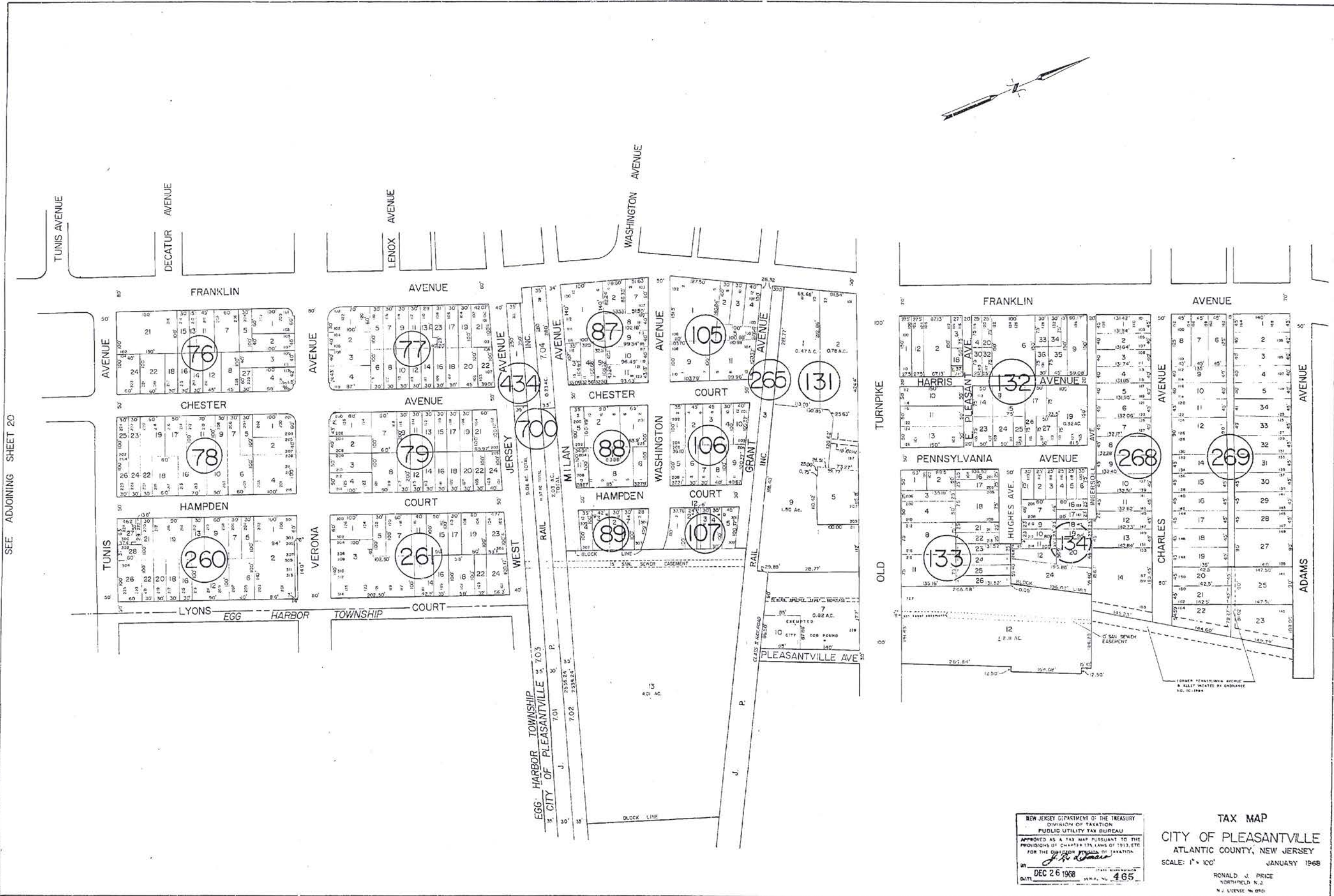
CITY OF PLEASANTVILLE  
 ATLANTIC COUNTY, NEW JERSEY  
 TAX MAP  
 SCALE 1" = 100'  
 JANUARY 1968  
 RONALD J. PRICE  
 N.J. LICENSE NO. 1890

NEW JERSEY DEPARTMENT OF THE TREASURY  
 PUBLIC UTILITY TAX DIVISION  
 DIVISION OF TAXATION  
 AMOUNTS AS A RATE APPLICABLE TO THE  
 PROVISIONS OF CHAPTER 126, N.J.A.C. 17-27  
 FOR THE DISTRICT OF PLEASANTVILLE  
 DATE: DEC 26 1988  
 465

20

534





SEE ADJOINING SHEET 20

SEE ADJOINING SHEET 22

535

REVISED TO MAR. 1, 1997 BY R. & V.  
 REVISED TO FEB. 1, 1995 BY R. & V.  
 REVISED TO MAR. 1, 1994 BY R. V.  
 REVISED TO DEC. 31, 1991 BY R. V.  
 REVISED TO DEC. 31, 1989 BY F. R. A.  
 REVISED TO DEC. 31, 1988 BY F. R. A.  
 REVISED TO DEC. 31, 1987 BY F. R. A.  
 REVISED TO DEC. 31, 1986 BY F. R. A.  
 REVISED TO DEC. 31, 1985 BY SCHODOR, DE PALMA & GILLEN, INC.  
 REVISED TO DEC. 31, 1984 BY SCHODOR, DE PALMA & GILLEN, INC.

NEW JERSEY DEPARTMENT OF THE TREASURY  
 DIVISION OF TAXATION  
 PUBLIC UTILITY TAX BUREAU  
 APPROVED AS A TAX MAP PURSUANT TO THE  
 PROVISIONS OF CHAPTER 125, LAWS OF 1913, ETC.  
 FOR THE OFFICER OF TAXATION  
*J. R. Price*  
 DATE: DEC 26 1988  
 NO. 465

TAX MAP  
 CITY OF PLEASANTVILLE  
 ATLANTIC COUNTY, NEW JERSEY  
 SCALE: 1" = 100'  
 JANUARY 1988  
 RONALD J. PRICE  
 NORTHFIELD N.J.  
 N. J. LICENSE NO. 892



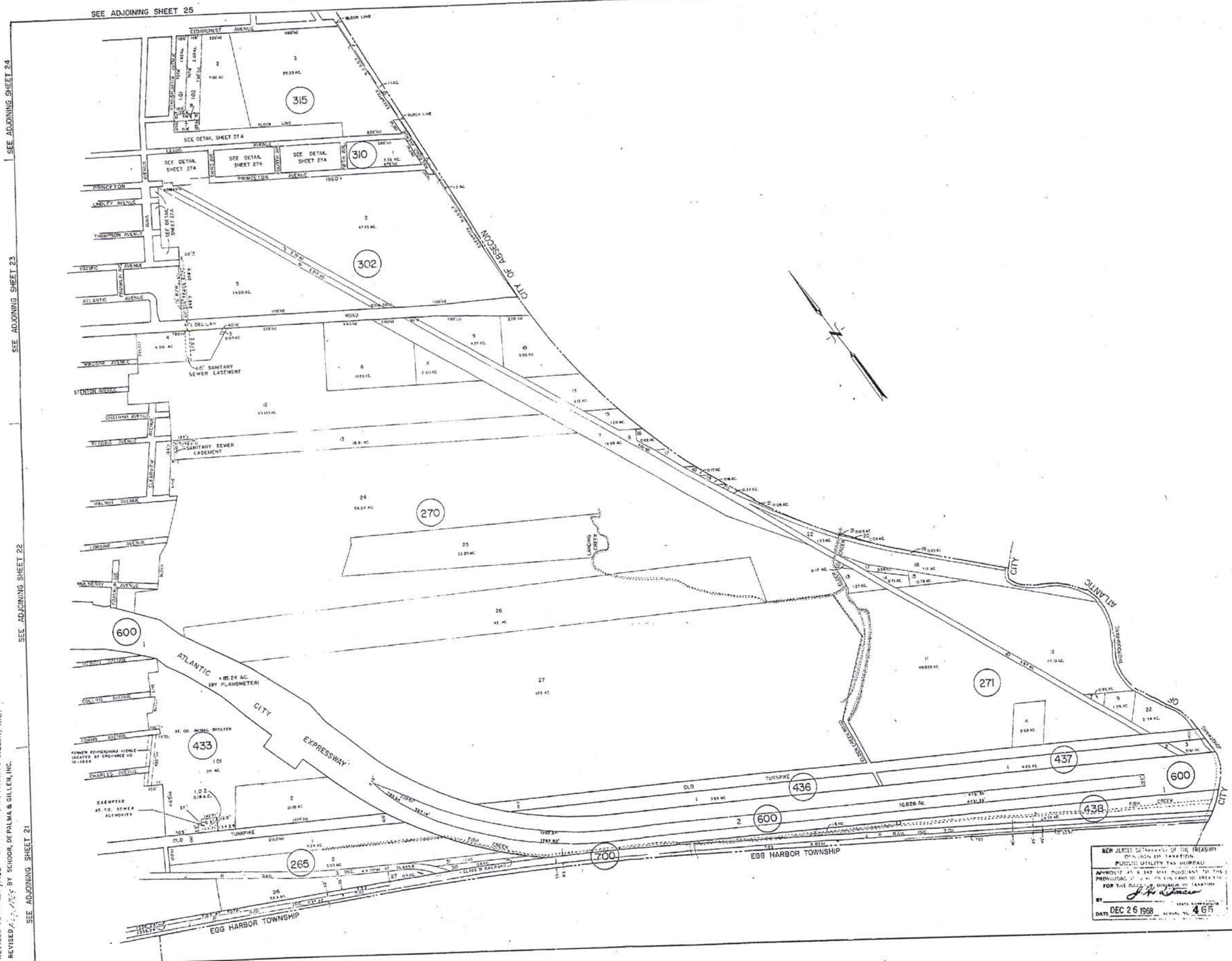








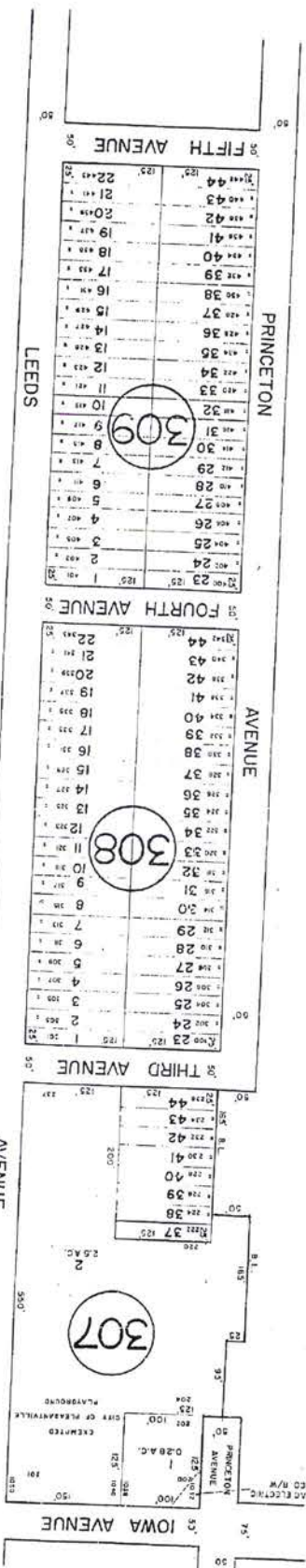
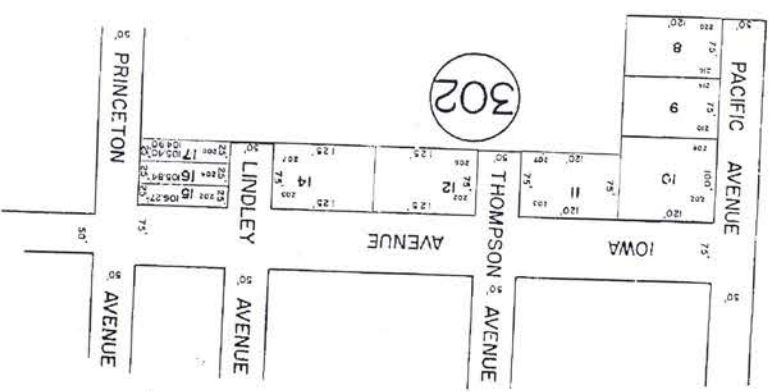
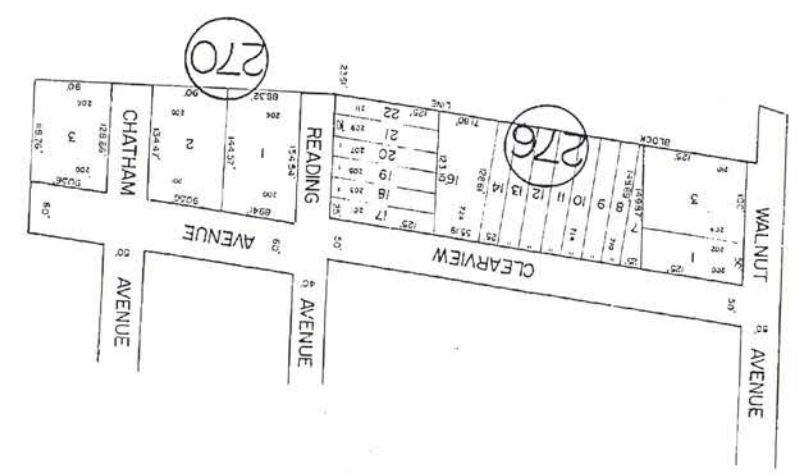
REVISED TO MAR. 1, 1997 BY R. & V.  
 REVISED TO FEB. 1, 1995 BY R.V.  
 REVISED TO DEC. 31, 1997 BY F.R.A.  
 REVISED TO DEC. 31, 1996 BY F.R.A.  
 REVISED TO DEC. 31, 1995 BY F.R.A.  
 REVISED TO DEC. 31, 1994 BY F.R.A.  
 REVISED TO DEC. 31, 1993 BY F.R.A.  
 REVISED TO DEC. 31, 1992 BY F.R.A.  
 REVISED TO DEC. 31, 1991 BY F.R.A.  
 REVISED TO DEC. 31, 1990 BY F.R.A.  
 REVISED TO DEC. 31, 1989 BY F.R.A.  
 REVISED TO DEC. 31, 1988 BY F.R.A.  
 REVISED TO DEC. 31, 1987 BY F.R.A.  
 REVISED TO DEC. 31, 1986 BY F.R.A.  
 REVISED TO DEC. 31, 1985 BY F.R.A.  
 REVISED TO DEC. 31, 1984 BY F.R.A.  
 REVISED TO DEC. 31, 1983 BY F.R.A.  
 REVISED TO DEC. 31, 1982 BY F.R.A.  
 REVISED TO DEC. 31, 1981 BY F.R.A.  
 REVISED TO DEC. 31, 1980 BY F.R.A.  
 REVISED TO DEC. 31, 1979 BY F.R.A.  
 REVISED TO DEC. 31, 1978 BY F.R.A.  
 REVISED TO DEC. 31, 1977 BY F.R.A.  
 REVISED TO DEC. 31, 1976 BY F.R.A.  
 REVISED TO DEC. 31, 1975 BY F.R.A.  
 REVISED TO DEC. 31, 1974 BY F.R.A.  
 REVISED TO DEC. 31, 1973 BY F.R.A.  
 REVISED TO DEC. 31, 1972 BY F.R.A.  
 REVISED TO DEC. 31, 1971 BY F.R.A.  
 REVISED TO DEC. 31, 1970 BY F.R.A.  
 REVISED TO DEC. 31, 1969 BY F.R.A.  
 REVISED TO DEC. 31, 1968 BY F.R.A.  
 REVISED TO DEC. 31, 1967 BY F.R.A.  
 REVISED TO DEC. 31, 1966 BY F.R.A.  
 REVISED TO DEC. 31, 1965 BY F.R.A.  
 REVISED TO DEC. 31, 1964 BY F.R.A.  
 REVISED TO DEC. 31, 1963 BY F.R.A.  
 REVISED TO DEC. 31, 1962 BY F.R.A.  
 REVISED TO DEC. 31, 1961 BY F.R.A.  
 REVISED TO DEC. 31, 1960 BY F.R.A.  
 REVISED TO DEC. 31, 1959 BY F.R.A.  
 REVISED TO DEC. 31, 1958 BY F.R.A.  
 REVISED TO DEC. 31, 1957 BY F.R.A.  
 REVISED TO DEC. 31, 1956 BY F.R.A.  
 REVISED TO DEC. 31, 1955 BY F.R.A.  
 REVISED TO DEC. 31, 1954 BY F.R.A.  
 REVISED TO DEC. 31, 1953 BY F.R.A.  
 REVISED TO DEC. 31, 1952 BY F.R.A.  
 REVISED TO DEC. 31, 1951 BY F.R.A.  
 REVISED TO DEC. 31, 1950 BY F.R.A.  
 REVISED TO DEC. 31, 1949 BY F.R.A.  
 REVISED TO DEC. 31, 1948 BY F.R.A.  
 REVISED TO DEC. 31, 1947 BY F.R.A.  
 REVISED TO DEC. 31, 1946 BY F.R.A.  
 REVISED TO DEC. 31, 1945 BY F.R.A.  
 REVISED TO DEC. 31, 1944 BY F.R.A.  
 REVISED TO DEC. 31, 1943 BY F.R.A.  
 REVISED TO DEC. 31, 1942 BY F.R.A.  
 REVISED TO DEC. 31, 1941 BY F.R.A.  
 REVISED TO DEC. 31, 1940 BY F.R.A.  
 REVISED TO DEC. 31, 1939 BY F.R.A.  
 REVISED TO DEC. 31, 1938 BY F.R.A.  
 REVISED TO DEC. 31, 1937 BY F.R.A.  
 REVISED TO DEC. 31, 1936 BY F.R.A.  
 REVISED TO DEC. 31, 1935 BY F.R.A.  
 REVISED TO DEC. 31, 1934 BY F.R.A.  
 REVISED TO DEC. 31, 1933 BY F.R.A.  
 REVISED TO DEC. 31, 1932 BY F.R.A.  
 REVISED TO DEC. 31, 1931 BY F.R.A.  
 REVISED TO DEC. 31, 1930 BY F.R.A.  
 REVISED TO DEC. 31, 1929 BY F.R.A.  
 REVISED TO DEC. 31, 1928 BY F.R.A.  
 REVISED TO DEC. 31, 1927 BY F.R.A.  
 REVISED TO DEC. 31, 1926 BY F.R.A.  
 REVISED TO DEC. 31, 1925 BY F.R.A.  
 REVISED TO DEC. 31, 1924 BY F.R.A.  
 REVISED TO DEC. 31, 1923 BY F.R.A.  
 REVISED TO DEC. 31, 1922 BY F.R.A.  
 REVISED TO DEC. 31, 1921 BY F.R.A.  
 REVISED TO DEC. 31, 1920 BY F.R.A.  
 REVISED TO DEC. 31, 1919 BY F.R.A.  
 REVISED TO DEC. 31, 1918 BY F.R.A.  
 REVISED TO DEC. 31, 1917 BY F.R.A.  
 REVISED TO DEC. 31, 1916 BY F.R.A.  
 REVISED TO DEC. 31, 1915 BY F.R.A.  
 REVISED TO DEC. 31, 1914 BY F.R.A.  
 REVISED TO DEC. 31, 1913 BY F.R.A.  
 REVISED TO DEC. 31, 1912 BY F.R.A.  
 REVISED TO DEC. 31, 1911 BY F.R.A.  
 REVISED TO DEC. 31, 1910 BY F.R.A.  
 REVISED TO DEC. 31, 1909 BY F.R.A.  
 REVISED TO DEC. 31, 1908 BY F.R.A.  
 REVISED TO DEC. 31, 1907 BY F.R.A.  
 REVISED TO DEC. 31, 1906 BY F.R.A.  
 REVISED TO DEC. 31, 1905 BY F.R.A.  
 REVISED TO DEC. 31, 1904 BY F.R.A.  
 REVISED TO DEC. 31, 1903 BY F.R.A.  
 REVISED TO DEC. 31, 1902 BY F.R.A.  
 REVISED TO DEC. 31, 1901 BY F.R.A.  
 REVISED TO DEC. 31, 1900 BY F.R.A.



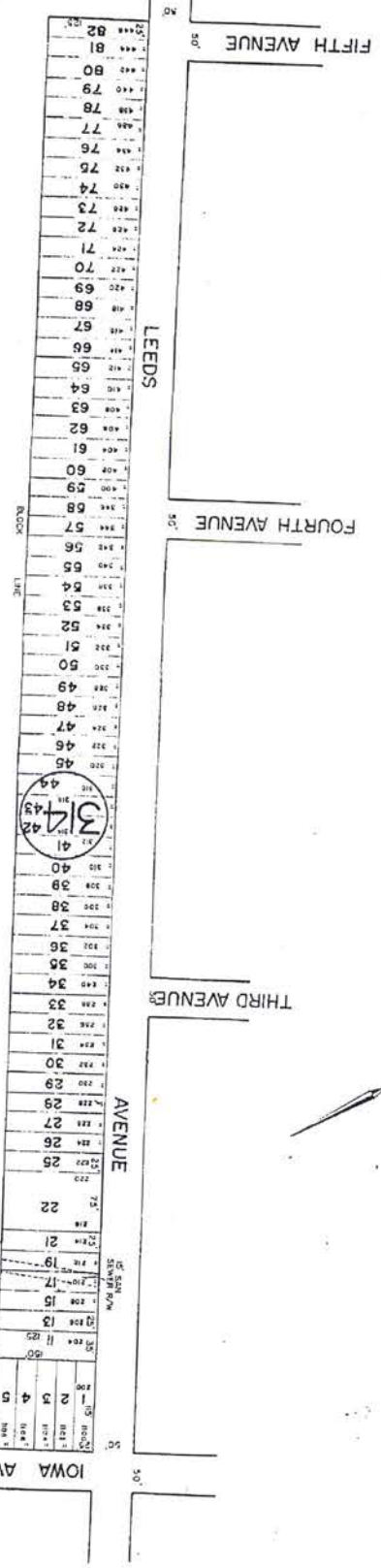
NEW JERSEY DEPARTMENT OF THE TREASURY  
 DIVISION OF TAXATION  
 PUBLIC UTILITY TAX BUREAU  
 APPROVED AS A TAX MAP PURSUANT TO THE  
 PROVISIONS OF P.L. 1967, CH. 123, § 10  
 FOR THE PURPOSES OF DETERMINING TAXATION  
 BY  
 DATE DEC 26 1968 SERIAL NO. 465

TAX MAP  
 CITY OF PLEASANTVILLE  
 ATLANTIC COUNTY, NEW JERSEY  
 SCALE: 1" = 400'  
 JANUARY 1965  
 RONALD J. PRICE  
 NORTHFIELD, N.J.

REVISED TO MAR. 1, 1934 BY R.V.  
 REVISED TO DEC. 31, 1936 BY F.R.A.  
 REVISED TO DEC. 31, 1938 BY F.R.A.  
 REVISED TO DEC. 31, 1925 BY SCHOOR, DE PALMA & GILLEN, INC.



NEW JERSEY DEPARTMENT OF THE TREASURY  
 DIVISION OF TAXATION  
 PUBLIC UTILITY TAX BUREAU  
 APPROVED AS TO THE ACCURACY OF THE MAP  
 FOR THE DIVISION OF TAXATION  
 DATE: DEC 26 1938  
 465



CITY OF PLEASANTVILLE  
 ATLANTIC COUNTY, NEW JERSEY  
 TAX MAP  
 SCALE 1" = 100'  
 JANUARY 1936  
 RONALD A. PRICE  
 NORTHFIELD, N.J.  
 LICENSE NO. 933

27A

542

27A