

LEGEND KEY MAP

- 10 PLATE NUMBER
- 107 BLOCK NUMBER
- ARTIFICIAL-BLOCK-LIMIT-LINE
- MATCH LINE
- PLATE DELINEATION LINE
- KEY MAP DELINEATION LINE
- MUNICIPAL BOUNDARY LINE
- COUNTY BOUNDARY LINE
- WATERWAY LINES
- ASSESSMENT LINE
- TIDELANDS LINE
- F.H.A. FLOOD HAZARD AREA - F.H.A.
- PIERHEAD LINE PIERHEAD OR BULKHEAD LINE
- BULKHEAD LINE PIERHEAD OR BULKHEAD LINE (BLOCK LIMIT LINE)

DETAIL SHEET

- 1.01 NEW BLOCK NUMBERS
- 5 NEW LOT NUMBERS
- OLD BLOCK NUMBERS
- OLD LOT NUMBERS
- ARTIFICIAL-BLOCK-LIMIT-LINE
- LOT-LINE
- OLD LOT LINE (PROPERTY LINE)
- WATERWAY LINES
- ASSESSMENT LINE
- TIDELANDS LINE
- F.H.A. FLOOD HAZARD AREA - F.H.A.
- PIERHEAD LINE PIERHEAD OR BULKHEAD LINE
- BULKHEAD LINE PIERHEAD OR BULKHEAD LINE (BLOCK LIMIT LINE)

NEW JERSEY DEPARTMENT OF THE TREASURY
DIVISION OF TAXATION
PROPERTY ADMINISTRATION
APPROVED AS A TAX MAP PURSUANT TO THE AUTHORITY OF
N.J.S.A. 54:1-18 & 54:27-1
FOR THE SUPERVISOR, DIVISION OF TAXATION
Thomas J. Kelly C.T.A.
THOMAS J. KELLY, CHIEF, LOCAL PROPERTY, FIELD ASSISTANCE
Samuel D. DiMatteo C.T.A.
SAMUEL D. DICOMATTEO, SUPERVISING FIELD REPRESENTATIVE
DATE: OCT 16 2007 SERIAL NO. 914

INDEX CITY OF PLEASANTVILLE

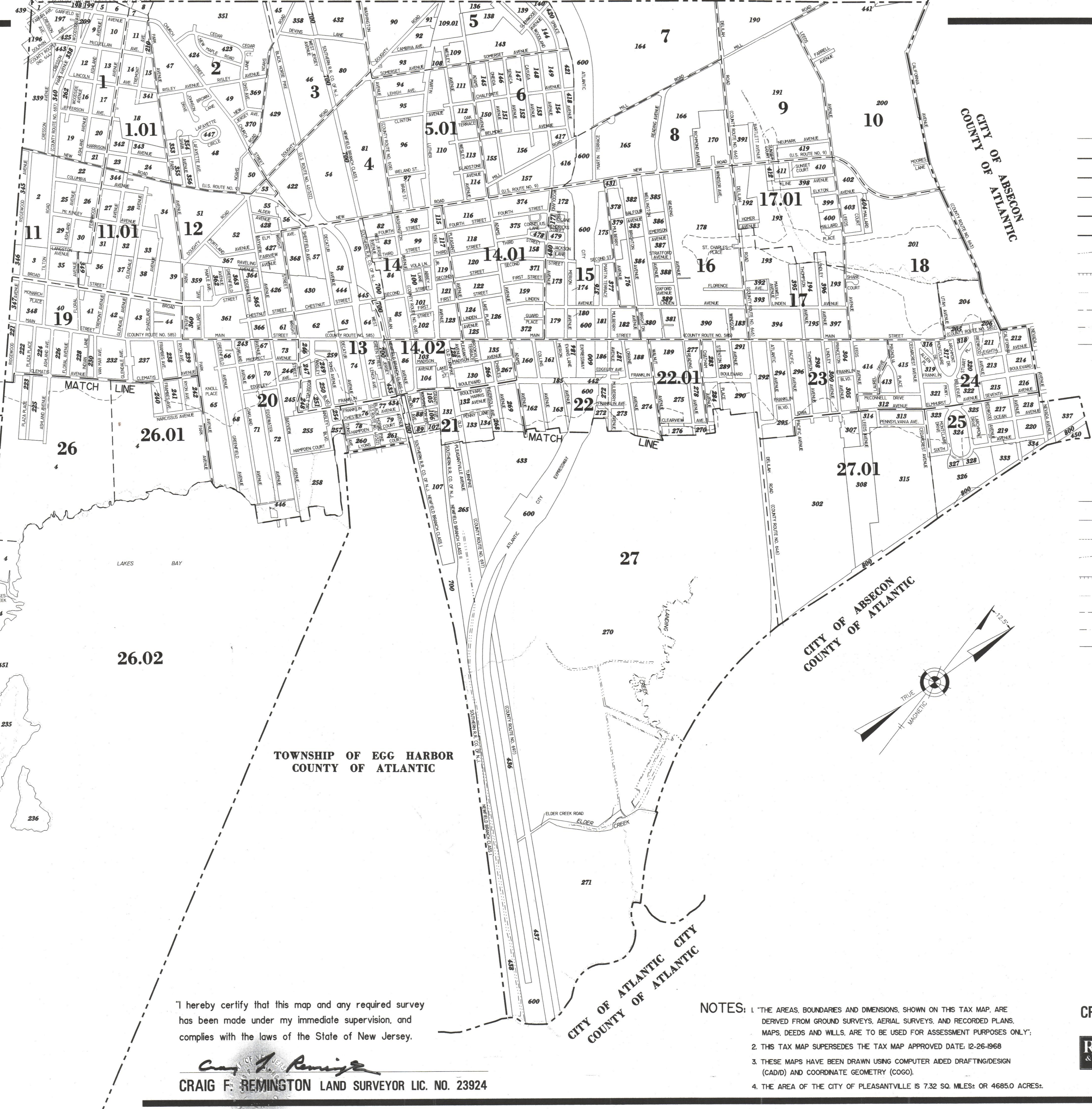
ATLANTIC COUNTY NEW JERSEY
SCALE: 1" = 800' DATE: 6-16-2003

CRAIG F. REMINGTON LAND SURVEYOR LIC. NO. 23924

RVW REMINGTON, VERNICK & WALBERG ENGINEERS
24 GA 28048700
845 N. MAIN STREET, PLEASANTVILLE, N.J. 08232
(609) 645-700, FAX (609) 645-7076
WEB SITE ADDRESS: WWW.RVWE.COM

TO SHOW CONDITIONS AS OF 7-1-2007

TOWNSHIP OF EGG HARBOR COUNTY OF ATLANTIC



KEY MAP 1
KEY MAP 2

REVISIONS		
8-19-2003	CRAIG F. REMINGTON	23924
8-30-2004	CRAIG F. REMINGTON	23924
12-27-2004	CRAIG F. REMINGTON	23924
4-24-2006	CRAIG F. REMINGTON	23924
2-21-2007	CRAIG F. REMINGTON	23924
4-4-2007	CRAIG F. REMINGTON	23924
7-11-2007	CRAIG F. REMINGTON	23924

I hereby certify that this map and any required survey has been made under my immediate supervision, and complies with the laws of the State of New Jersey.

Craig F. Remington
CRAIG F. REMINGTON LAND SURVEYOR LIC. NO. 23924

- NOTES:
- THE AREAS, BOUNDARIES AND DIMENSIONS, SHOWN ON THIS TAX MAP, ARE DERIVED FROM GROUND SURVEYS, AERIAL SURVEYS, AND RECORDED PLANS. MAPS, DEEDS AND WILLS, ARE TO BE USED FOR ASSESSMENT PURPOSES ONLY.
 - THIS TAX MAP SUPERSEDES THE TAX MAP APPROVED DATE: 12-26-1968
 - THESE MAPS HAVE BEEN DRAWN USING COMPUTER AIDED DRAFTING/DESIGN (CAD/D) AND COORDINATE GEOMETRY (COGO).
 - THE AREA OF THE CITY OF PLEASANTVILLE IS 7.32 SQ. MILES; OR 4685.0 ACRES.

CITY OF VENTNOR COUNTY OF ATLANTIC
CITY OF ATLANTIC CITY COUNTY OF ATLANTIC