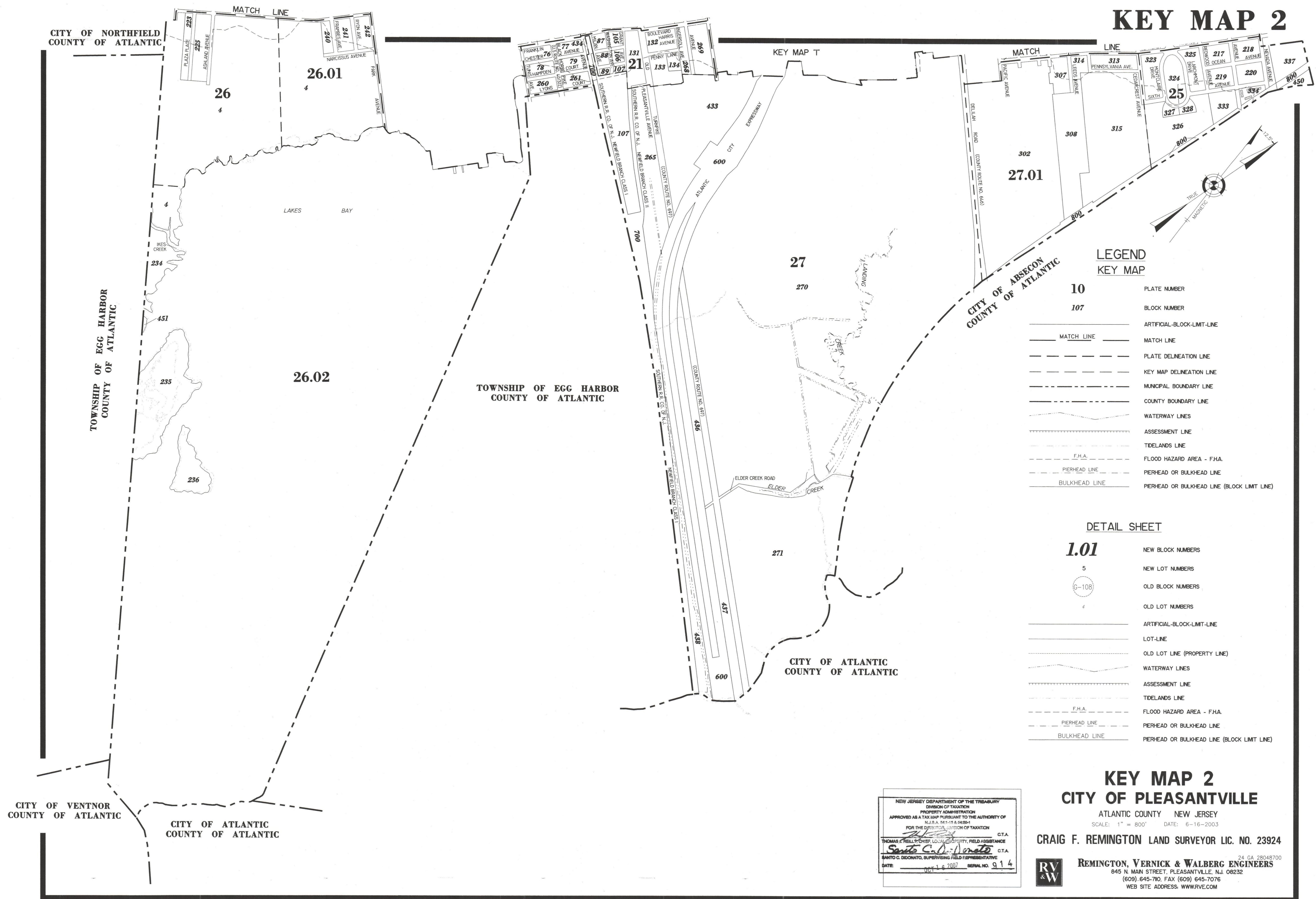


# KEY MAP 2



### LEGEND KEY MAP

- |            |  |
|------------|--|
| <b>10</b>  | PLATE NUMBER                                 |
| <b>107</b> | BLOCK NUMBER                                 |
|            | ARTIFICIAL-BLOCK-LIMIT-LINE                  |
|            | MATCH LINE                                   |
|            | PLATE DELINEATION LINE                       |
|            | KEY MAP DELINEATION LINE                     |
|            | MUNICIPAL BOUNDARY LINE                      |
|            | COUNTY BOUNDARY LINE                         |
|            | WATERWAY LINES                               |
|            | ASSESSMENT LINE                              |
|            | TIDELANDS LINE                               |
|            | FLOOD HAZARD AREA - F.H.A.                   |
|            | PIERHEAD OR BULKHEAD LINE                    |
|            | BULKHEAD LINE                                |
|            | PIERHEAD OR BULKHEAD LINE (BLOCK LIMIT LINE) |

### DETAIL SHEET

- |             |  |
|-------------|--|
| <b>1.01</b> | NEW BLOCK NUMBERS                            |
| <b>5</b>    | NEW LOT NUMBERS                              |
|             | OLD BLOCK NUMBERS                            |
| <b>4</b>    | OLD LOT NUMBERS                              |
|             | ARTIFICIAL-BLOCK-LIMIT-LINE                  |
|             | LOT-LINE                                     |
|             | OLD LOT LINE (PROPERTY LINE)                 |
|             | WATERWAY LINES                               |
|             | ASSESSMENT LINE                              |
|             | TIDELANDS LINE                               |
|             | FLOOD HAZARD AREA - F.H.A.                   |
|             | PIERHEAD OR BULKHEAD LINE                    |
|             | BULKHEAD LINE                                |
|             | PIERHEAD OR BULKHEAD LINE (BLOCK LIMIT LINE) |

NEW JERSEY DEPARTMENT OF THE TREASURY  
 DIVISION OF TAXATION  
 PROPERTY ADMINISTRATION  
 APPROVED AS A TAX MAP PURSUANT TO THE AUTHORITY OF  
 N.J.S.A. 54:15-1 & 54:15-2  
 FOR THE DIRECTOR, DIVISION OF TAXATION  
 THOMAS J. KELLY, CHIEF, LOCAL PROPERTY, FIELD ASSISTANCE C.T.A.  
 Santo C. DiDonato, SUPERVISING FIELD REPRESENTATIVE C.T.A.  
 DATE: 06-18-2007 SERIAL NO. 914

**KEY MAP 2**  
**CITY OF PLEASANTVILLE**  
 ATLANTIC COUNTY NEW JERSEY  
 SCALE: 1" = 800' DATE: 6-16-2003  
**CRAIG F. REMINGTON LAND SURVEYOR LIC. NO. 23924**  
**REMINGTON, VERNICK & WALBERG ENGINEERS**  
 845 N. MAIN STREET, PLEASANTVILLE, N.J. 08232  
 (609) 645-7100, FAX (609) 645-7076  
 WEB SITE ADDRESS: WWW.RVW.COM

# KEY MAP 2