

WASHINGTON AVENUE (COUNTY ROUTE NO. 608)

# TAX MAP CITY OF PLEASANTVILLE

ATLANTIC COUNTY NEW JERSEY  
SCALE: 1" = 100' DATE: 6-17-2003

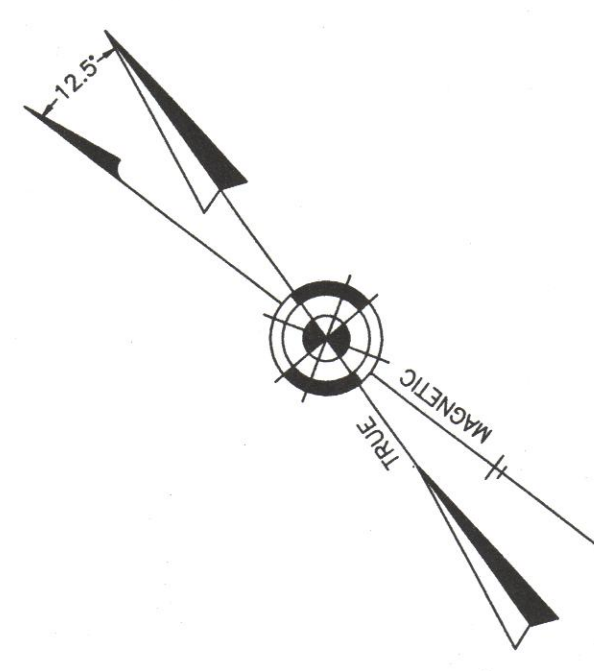
CRAIG F. REMINGTON LAND SURVEYOR LIC. NO. 23924



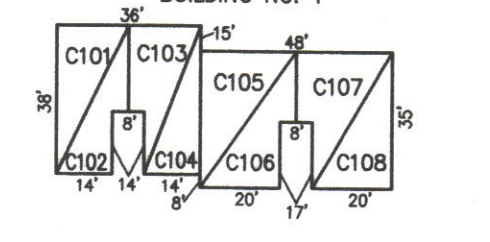
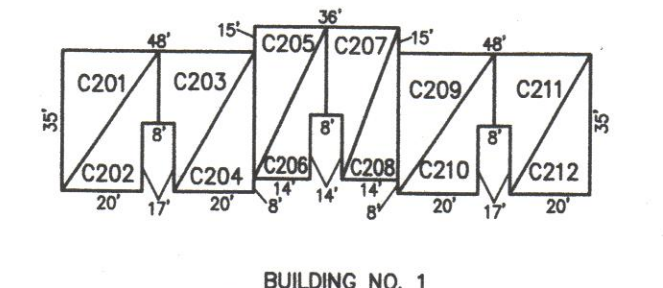
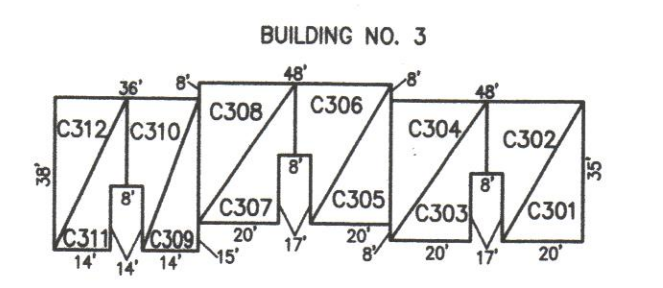
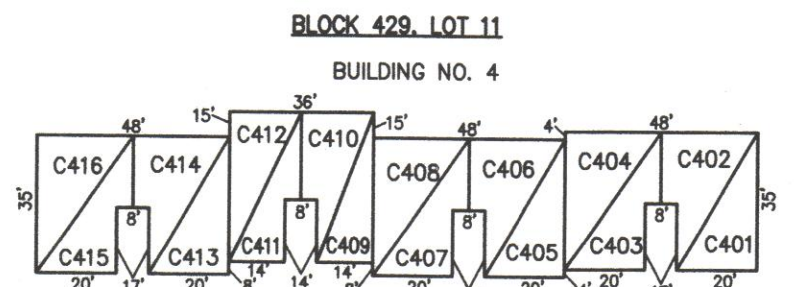
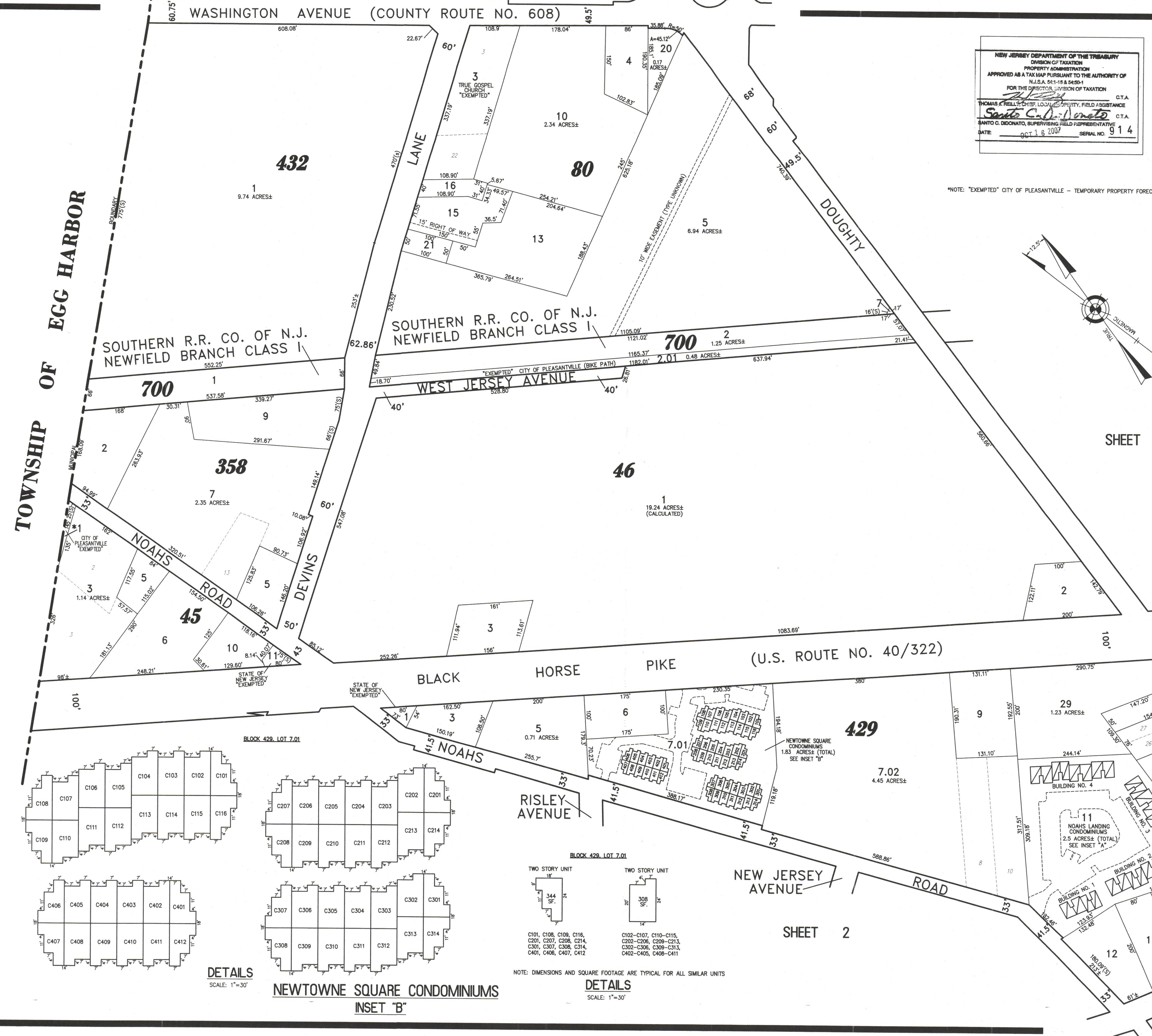
REMINGTON, VERNICK & WALBERG ENGINEERS  
24 GA 28048700  
845 N. MAIN STREET, PLEASANTVILLE, N.J. 08232  
(609) 645-700, FAX (609) 645-7076  
WEB SITE ADDRESS: WWW.RVWE.COM

NEW JERSEY DEPARTMENT OF THE TREASURY  
PROPERTY ADMINISTRATION  
APPROVED AS A TAX MAP PURSUANT TO THE AUTHORITY OF  
N.J.S.A. 54:1-18 & 54:1-19  
FOR THE DIRECTOR, DIVISION OF TAXATION  
C.T.A.  
THOMAS J. KELLY, CHIEF, LOCAL PROPERTY, FIELD ASSISTANCE  
Santo C. DiDonato, C.T.A.  
DATE: OCT 16 2007 SERIAL NO. 914

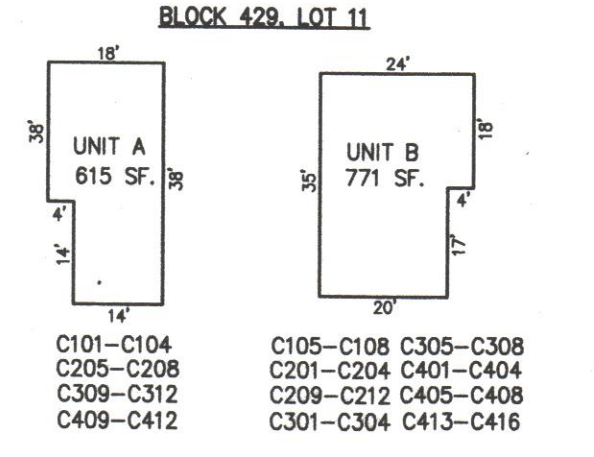
NOTE: "EXEMPTED" CITY OF PLEASANTVILLE - TEMPORARY PROPERTY FORECLOSURE



TOWNSHIP OF EGG HARBOR



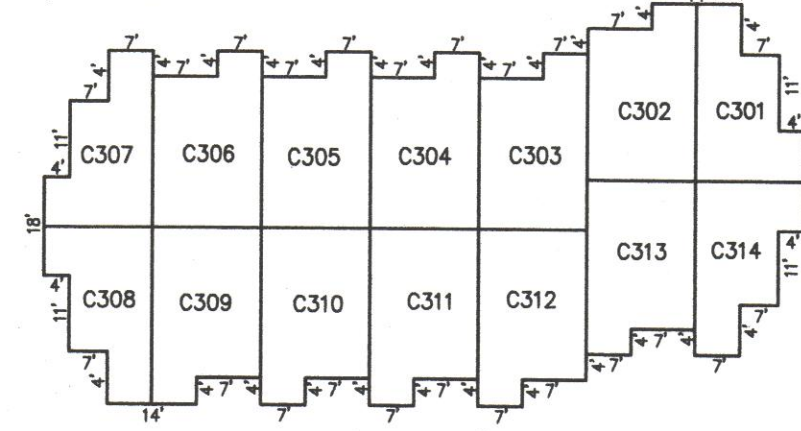
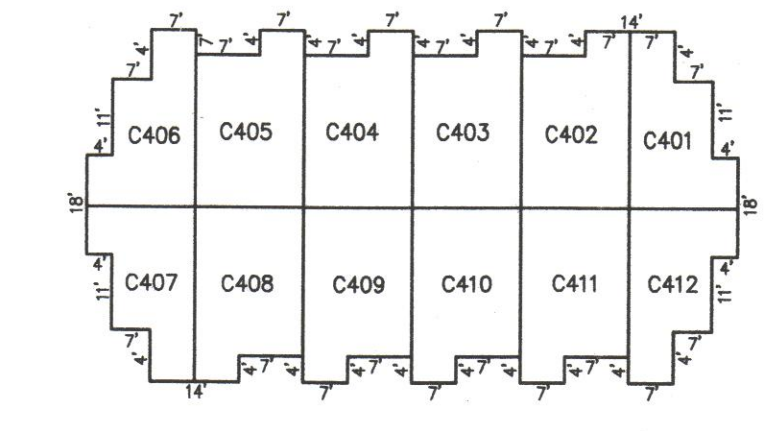
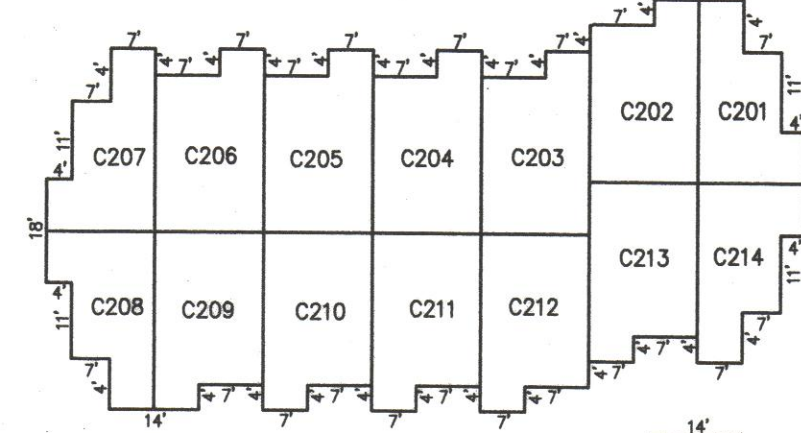
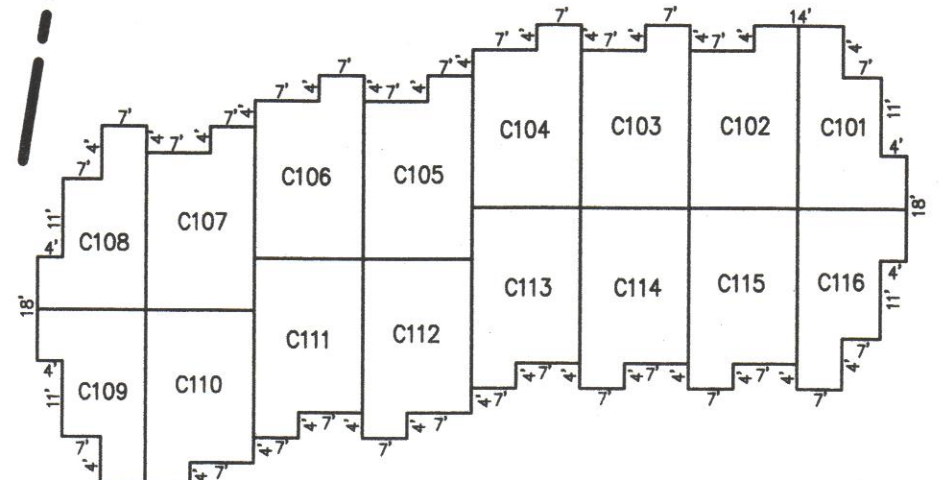
### DETAILS SCALE: 1"=40'



NOTE: 1. DIMENSIONS AND SQUARE FOOTAGE ARE TYPICAL FOR ALL SIMILAR UNITS  
2. EVEN NUMBERS INDICATE SECOND FLOOR UNITS  
ODD NUMBERS INDICATE FLOOR FLOOR UNITS

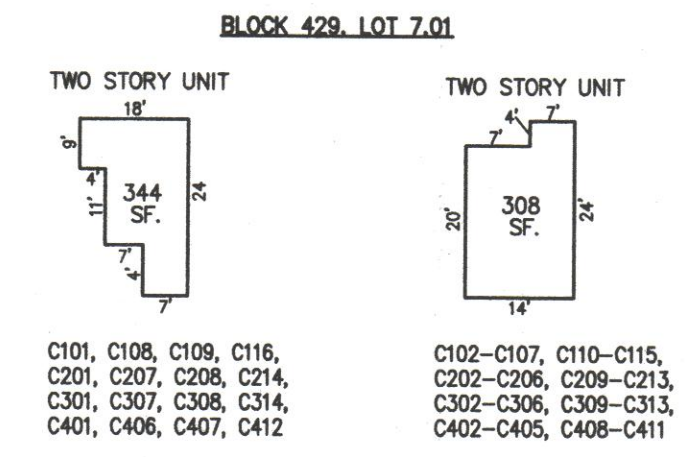
### DETAILS SCALE: 1"=30'

### NOAHS LANDING CONDOMINIUMS INSET "A"



### DETAILS SCALE: 1"=30'

### NEWTOWNE SQUARE CONDOMINIUMS INSET "B"



NOTE: DIMENSIONS AND SQUARE FOOTAGE ARE TYPICAL FOR ALL SIMILAR UNITS

### DETAILS SCALE: 1"=30'