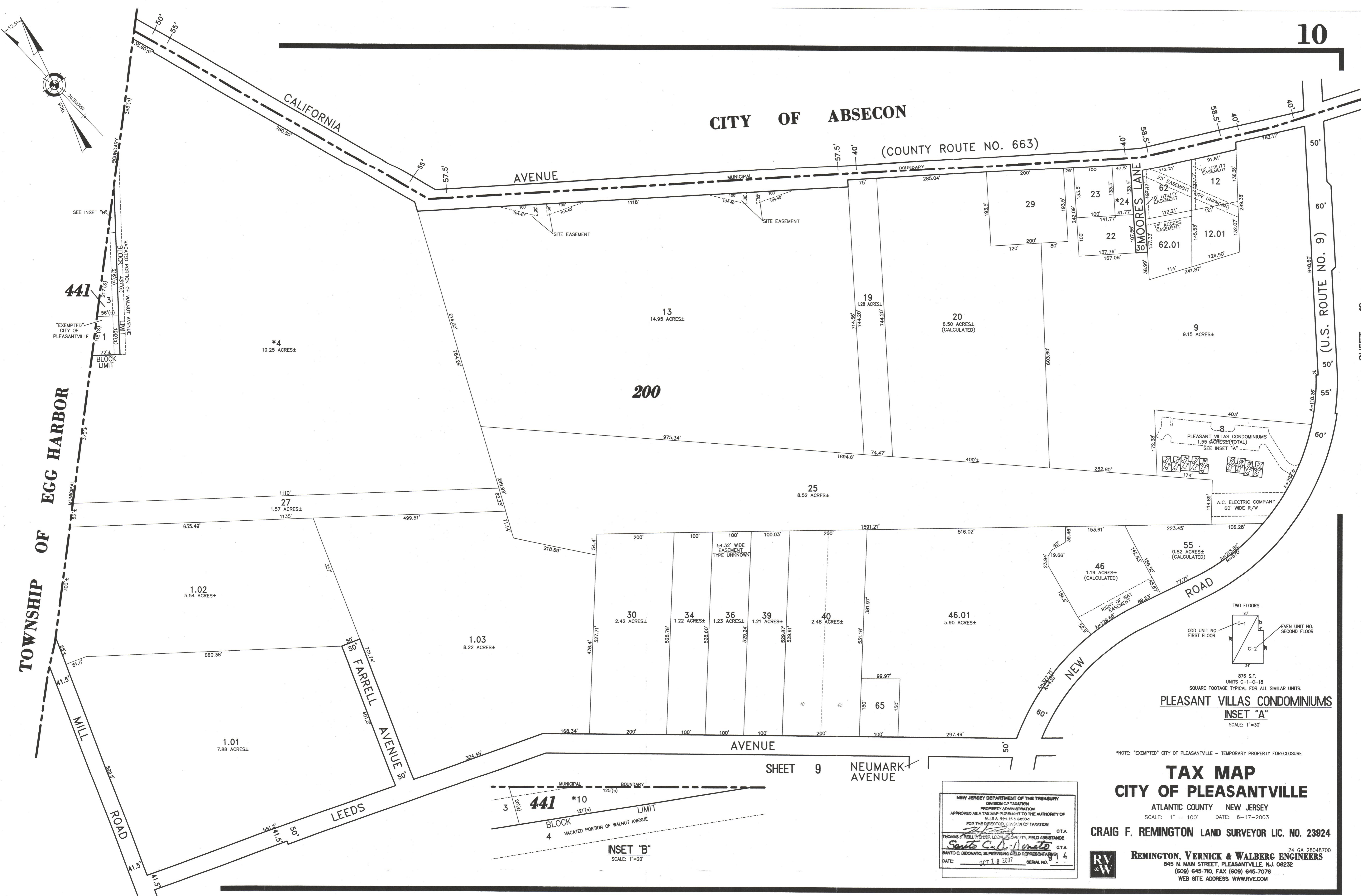


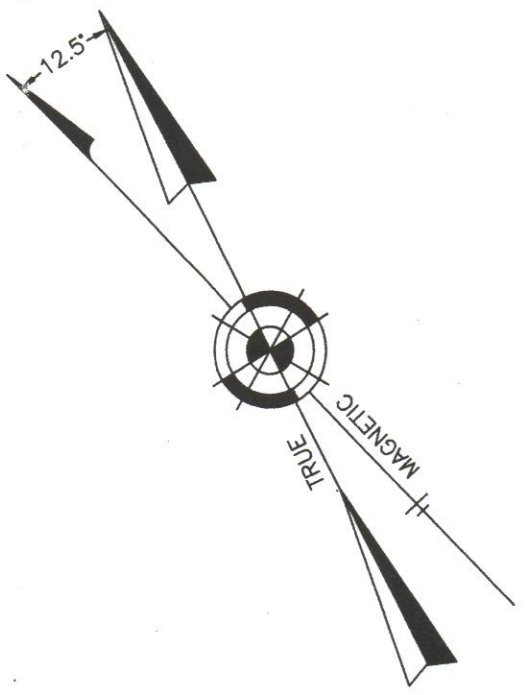
CITY OF ABSECON

(COUNTY ROUTE NO. 663)

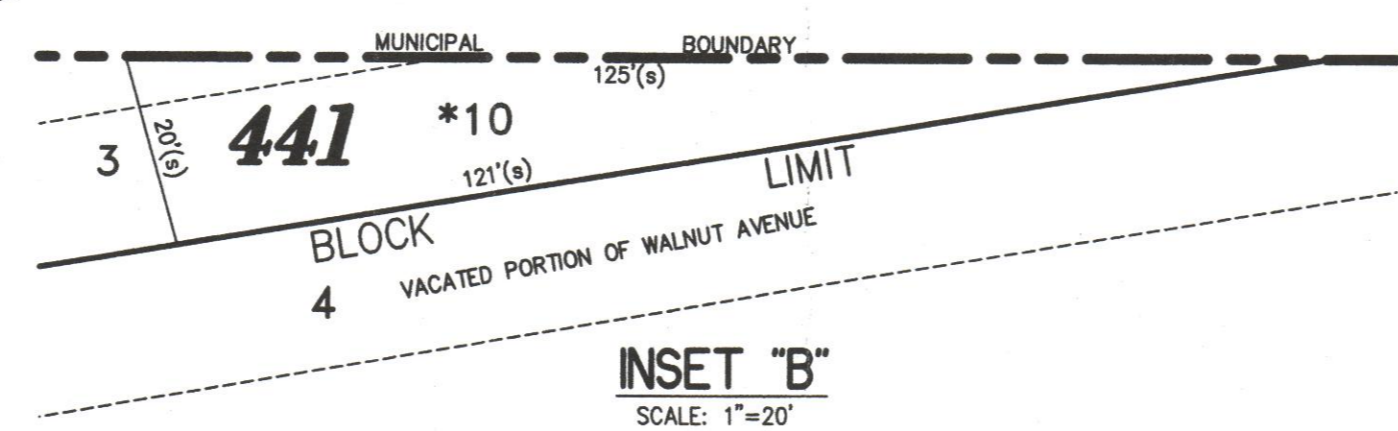
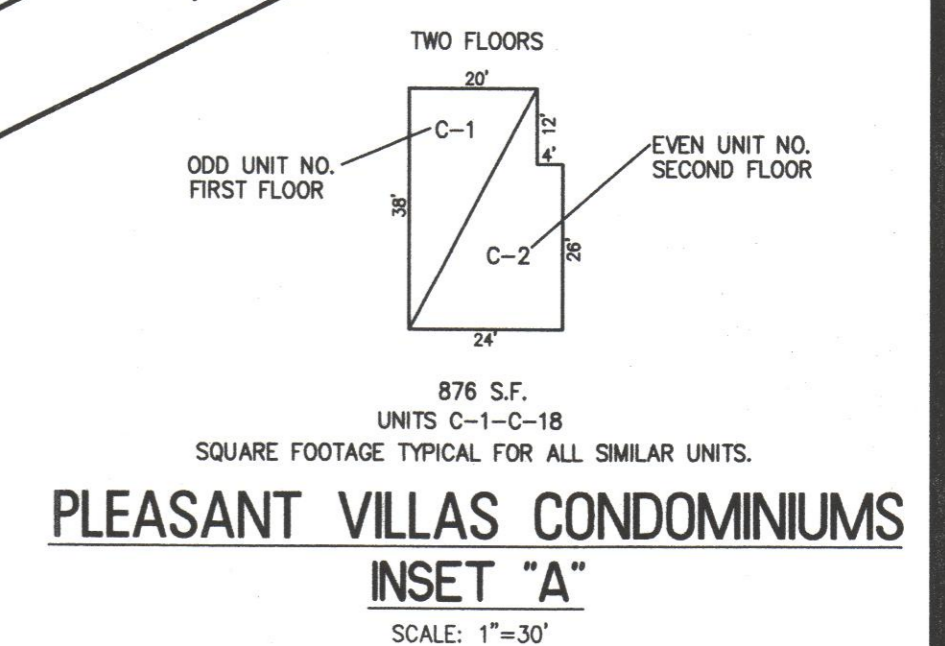
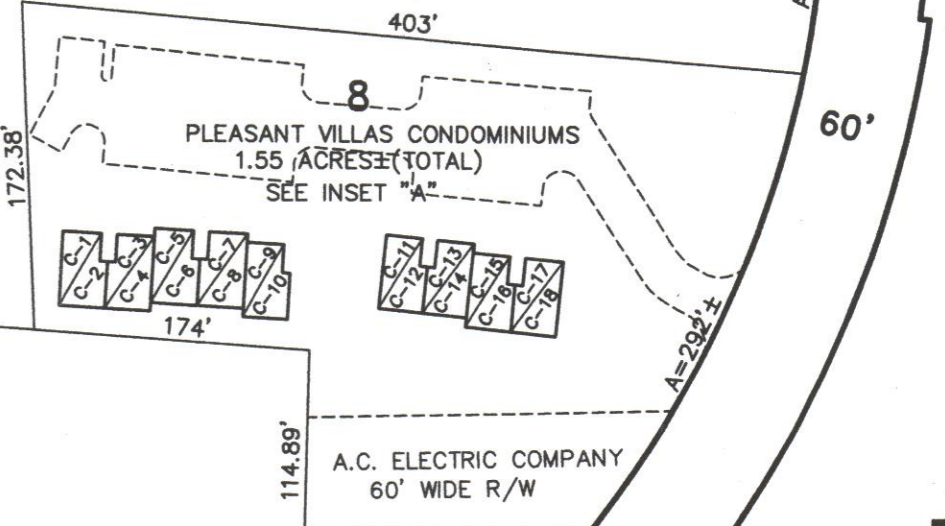


TOWNSHIP OF EGG HARBOR

SHEET 18



441
 EXEMPTED CITY OF PLEASANTVILLE
 77'±
 BLOCK LIMIT
 VACATED PORTION OF WALNUT AVENUE
 BLOCK 4 (SEE INSET "B")



NEW JERSEY DEPARTMENT OF THE TREASURY
 DIVISION OF TAXATION
 PROPERTY ADMINISTRATION
 APPROVED AS A TAX MAP PURSUANT TO THE AUTHORITY OF
 N.J.S.A. 17:27-18.3(b)(2)
 FOR THE DIRECTOR, DIVISION OF TAXATION
 THOMAS J. BELL, CHIEF LOCAL GOVERNMENT FIELD ASSISTANCE C.T.A.
 SANTI C. DICONATO, SUPERVISING FIELD REPRESENTATIVE C.T.A.
 DATE: OCT 16 2007 SERIAL NO. 974

NOTE: "EXEMPTED" CITY OF PLEASANTVILLE - TEMPORARY PROPERTY FORECLOSURE

TAX MAP
CITY OF PLEASANTVILLE
 ATLANTIC COUNTY NEW JERSEY
 SCALE: 1" = 100' DATE: 6-17-2003

CRAIG F. REMINGTON LAND SURVEYOR LIC. NO. 23924

REMINGTON, VERNICK & WALBERG ENGINEERS
 24 GA 28048700
 845 N. MAIN STREET, PLEASANTVILLE, N.J. 08232
 (609) 645-700, FAX (609) 645-7076
 WEB SITE ADDRESS: WWW.RVE.COM